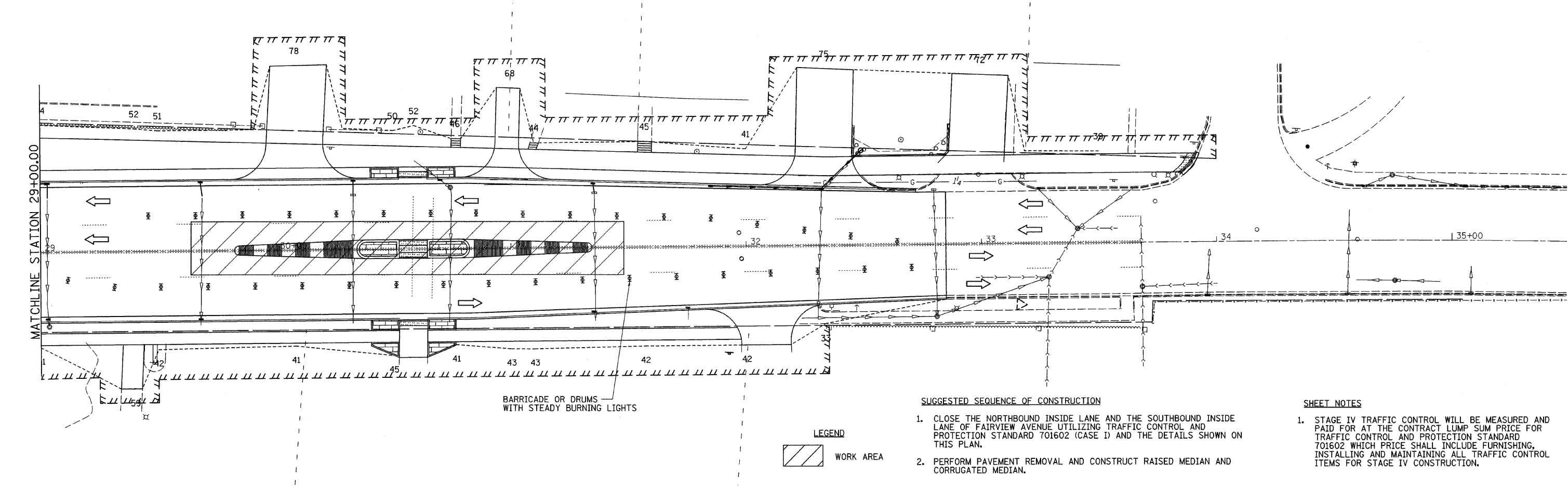
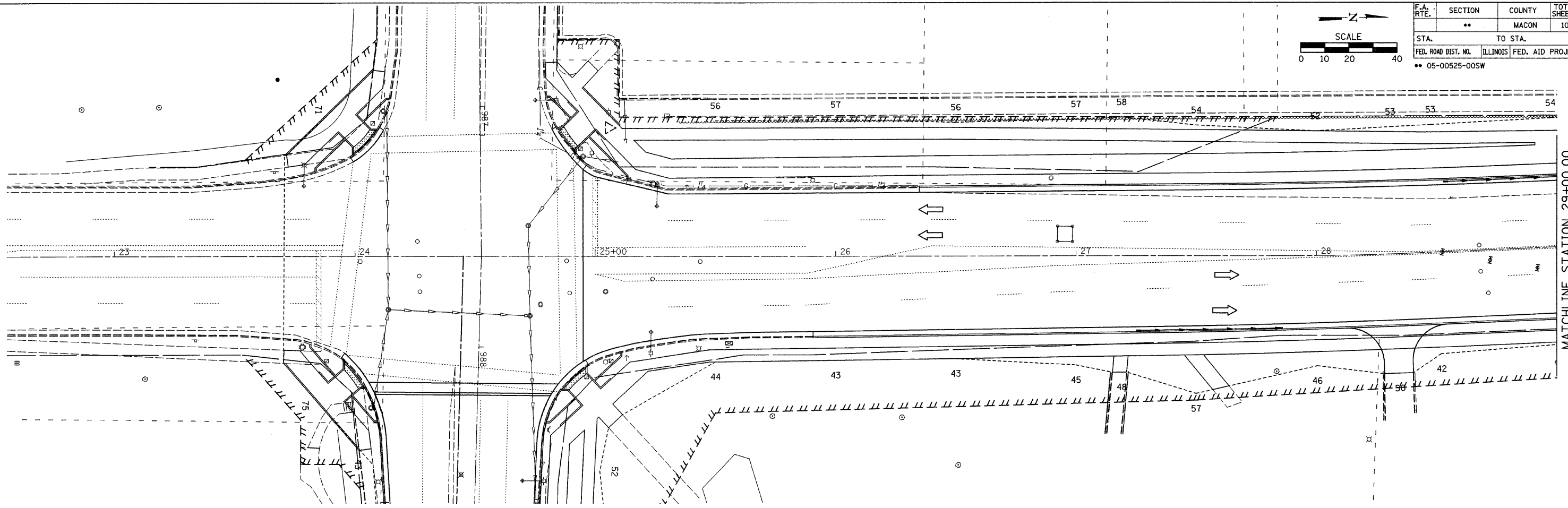
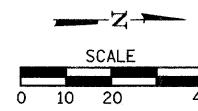
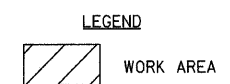


F.A. RTE.	SECTION	COUNTY	TOTAL SHEETS	SHEET NO.
**	**	MACON	106	33
STA. TO STA.		ILLINOIS FED. AID PROJECT		
FED. ROAD DIST. NO.		** 05-00525-00SW		



PLOT DATE = 2/26/2008
 FILE NAME = P:\05096865\Drawings\Misc\Plans\Stage 4 Construction.dgn
 PLOTTER = PLOT06 / IN.
 USER NAME = Fredrik

BARRICADE OR DRUMS WITH STEADY BURNING LIGHTS



SUGGESTED SEQUENCE OF CONSTRUCTION

1. CLOSE THE NORTHBOUND INSIDE LANE AND THE SOUTHBOUND INSIDE LANE OF FAIRVIEW AVENUE UTILIZING TRAFFIC CONTROL AND PROTECTION STANDARD 701602 (CASE I) AND THE DETAILS SHOWN ON THIS PLAN.
2. PERFORM PAVEMENT REMOVAL AND CONSTRUCT RAISED MEDIAN AND CORRUGATED MEDIAN.

SHEET NOTES

1. STAGE IV TRAFFIC CONTROL WILL BE MEASURED AND PAID FOR AT THE CONTRACT LUMP SUM PRICE FOR TRAFFIC CONTROL AND PROTECTION STANDARD 701602 WHICH PRICE SHALL INCLUDE FURNISHING, INSTALLING AND MAINTAINING ALL TRAFFIC CONTROL ITEMS FOR STAGE IV CONSTRUCTION.