

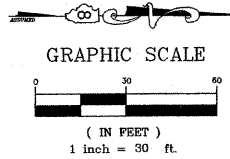
ROUTE NO.	SECTION	COUNTY	TOTAL SHEETS	SHEET NO.
C.H. 9 (WRINGE RD)	98-00070 -00-BR	CLINTON	6	3

CONTRACT NO. 97330

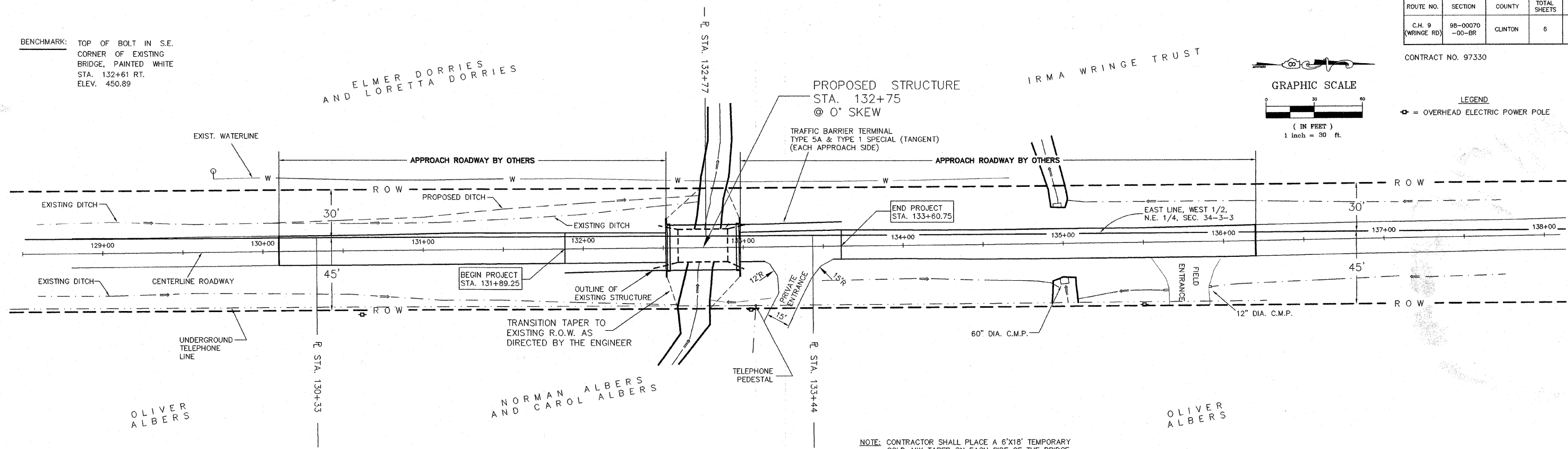
BENCHMARK: TOP OF BOLT IN S.E. CORNER OF EXISTING BRIDGE, PAINTED WHITE STA. 132+61 RT. ELEV. 450.89

ELMER DORRIES AND LORETTA DORRIES

IRMA WRINGE TRUST



LEGEND
⊕ = OVERHEAD ELECTRIC POWER POLE



NOTE: CONTRACTOR SHALL PLACE A 6'X18' TEMPORARY COLD-MIX TAPER ON EACH SIDE OF THE BRIDGE. COST SHALL NOT BE PAID FOR SEPERATLY BUT SHALL BE INCLUDED IN THE COST OF HOT-MIX ASPHALT SURFACE, MIX C. N50

OLIVER ALBERS

NORMAN ALBERS AND CAROL ALBERS

OLIVER ALBERS

PLAN	DATE	BY
REVISION		
NO.		

PROFILE	DATE	BY
REVISION		
NO.		

