

F.A.U. RTE.	SECTION	COUNTY	TOTAL SHEETS	SHEET NO.
9103	05-00046-01-PV	MADISON	25	17
FED. ROAD DIST. NO. ILLINOIS			FED. AID PROJECT	

CONTRACT NO. 97339

LEGEND

- CLASS B PATCHES, TYPE II
- CLASS B PATCHES, TYPE III
- CLASS B PATCHES, TYPE IV
- CLASS C PATCHES, TYPE I
- CLASS C PATCHES, TYPE II

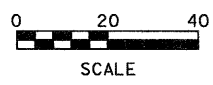
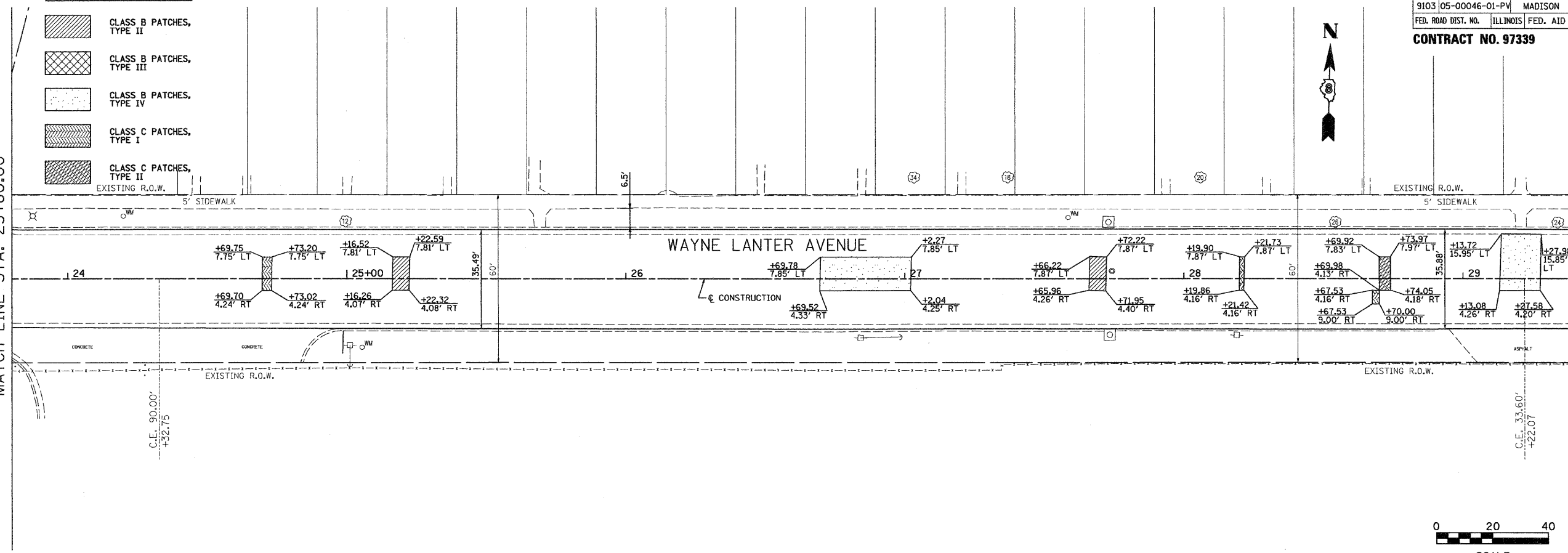


BY	DATE
SURVEYED	
PLOTTED	
TEMPLATE	
NOTE BOOK	
AREAS CHECKED	
NO.	

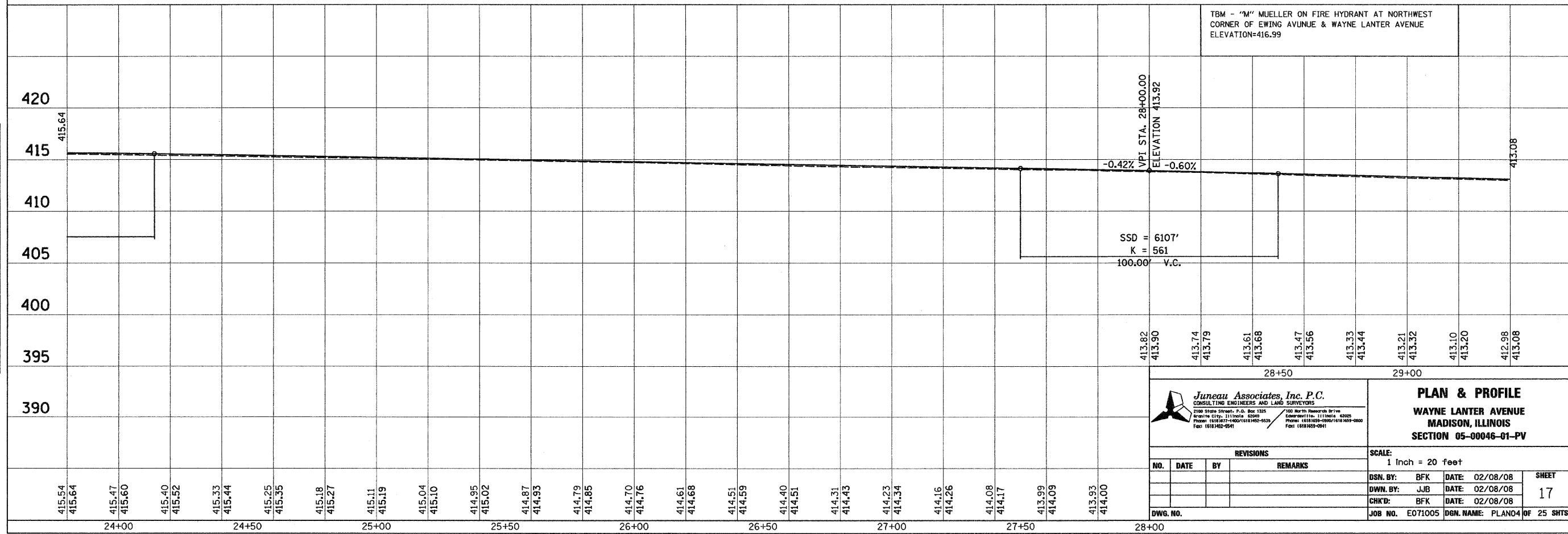
BY	DATE
SURVEYED	
PLOTTED	
TEMPLATE	
NOTE BOOK	
AREAS CHECKED	
NO.	

MATCH LINE STA. 23+80.00

MATCH LINE STA. 29+40.00



TBM - "M" MUELLER ON FIRE HYDRANT AT NORTHWEST CORNER OF EWING AVUNUE & WAYNE LANTER AVENUE ELEVATION=416.99



Juneau Associates, Inc. P.C.
CONSULTING ENGINEERS AND LAND SURVEYORS
2100 State Street, P.O. Box 1325
Madison, IL 61702-1325
Phone: (618) 932-1400 / (618) 932-9533
Fax: (618) 932-2941

PLAN & PROFILE
WAYNE LANTER AVENUE
MADISON, ILLINOIS
SECTION 05-00046-01-PV

NO.	DATE	BY	REMARKS

SCALE: 1 inch = 20 feet		
DSN. BY: BFK	DATE: 02/08/08	SHEET
DWN. BY: JJB	DATE: 02/08/08	17
CHK'D: BFK	DATE: 02/08/08	
DWG. NO.	JOB NO. E071005	DGN. NAME: PLAN04 OF 25 SHTS

415.54	415.64	415.47	415.60	415.40	415.52	415.33	415.44	415.25	415.35	415.18	415.27	415.11	415.19	415.04	415.10	414.95	415.02	414.87	414.93	414.79	414.85	414.70	414.76	414.61	414.68	414.51	414.59	414.40	414.51	414.31	414.43	414.23	414.34	414.16	414.26	414.08	414.17	413.99	414.09	413.93	414.00
24+00		24+50		25+00		25+50		26+00		26+50		27+00		27+50		28+00																									