

F.A.U. RTE.	SECTION	COUNTY	TOTAL SHEETS	SHEET NO.
9103	05-00046-01-PV	MADISON	25	20
FED. ROAD DIST. NO.	ILLINOIS	FED. AID PROJECT		

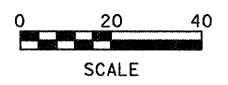
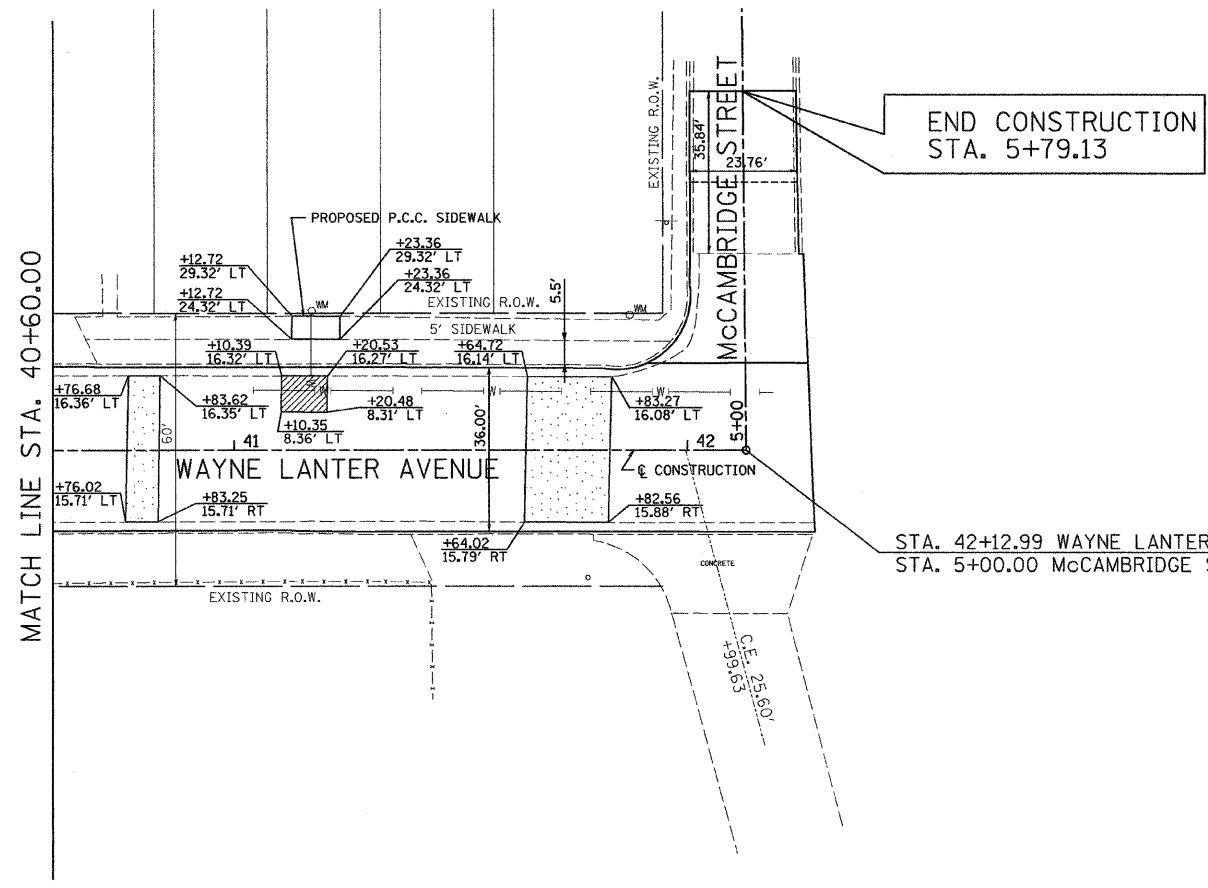
**CONTRACT NO. 97339**



**LEGEND**

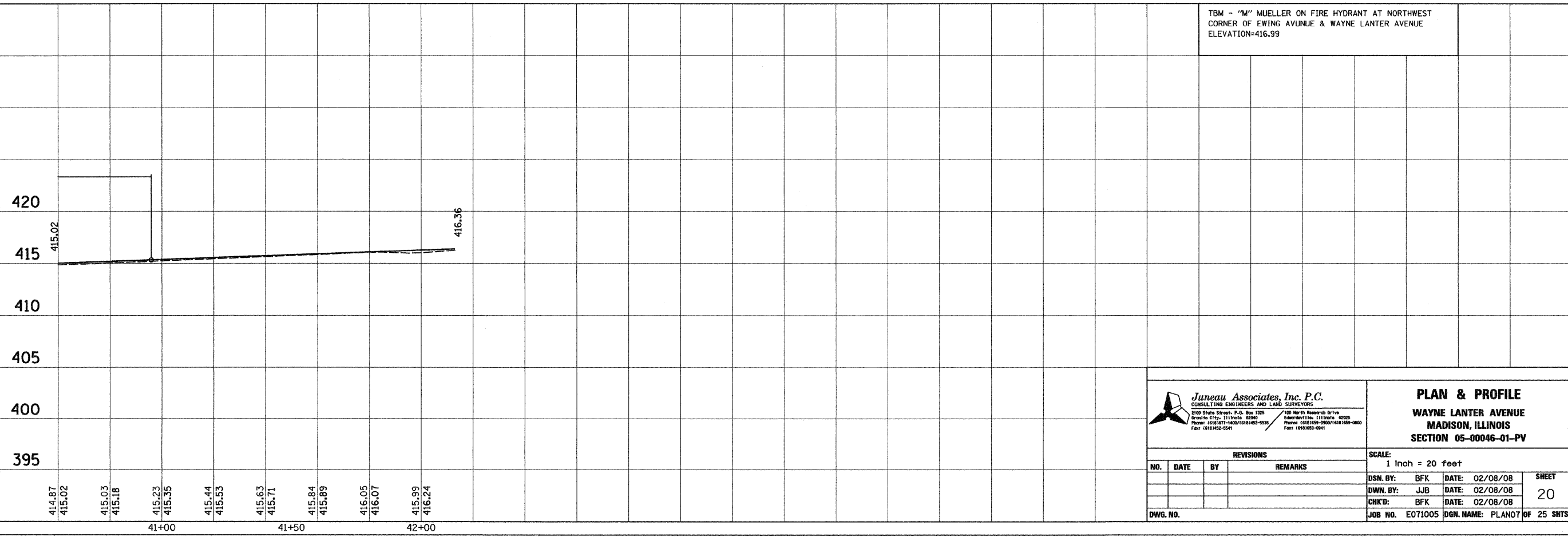
- CLASS B PATCHES, TYPE II
- CLASS B PATCHES, TYPE III
- CLASS B PATCHES, TYPE IV
- CLASS C PATCHES, TYPE I
- CLASS C PATCHES, TYPE II

FINAL SURVEY	BY	DATE
SURVEYED		
PLOTTED		
NOTE BOOK TEMPLATE		
AREAS CHECKED		
NO.		



TBM - "M" MUELLER ON FIRE HYDRANT AT NORTHWEST CORNER OF EWING AVENUE & WAYNE LANTER AVENUE ELEVATION=416.99

ORIGINAL SURVEY	BY	DATE
SURVEYED		
PLOTTED		
NOTE BOOK TEMPLATE		



**Juneau Associates, Inc. P.C.**  
CONSULTING ENGINEERS AND LAND SURVEYORS  
2100 Stone Street, P.O. Box 1205  
Granite City, Illinois 62041  
Phone: (618) 977-1400 / (618) 952-9535  
Fax: (618) 952-0541

**PLAN & PROFILE**  
**WAYNE LANTER AVENUE**  
**MADISON, ILLINOIS**  
**SECTION 05-00046-01-PV**

REVISIONS			
NO.	DATE	BY	REMARKS

SCALE: 1 Inch = 20 feet		
DSN. BY: BFK	DATE: 02/08/08	SHEET
DWN. BY: JJB	DATE: 02/08/08	20
CHK'D: BFK	DATE: 02/08/08	
DWG. NO.	JOB NO. E071005	DGN. NAME: PLAN07 OF 25 SHTS