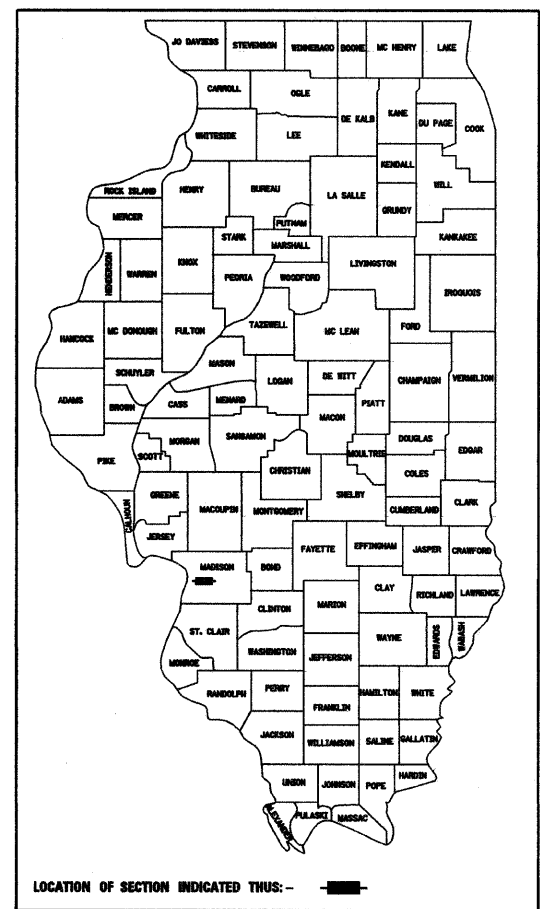


F.A. RTE.	SECTION	COUNTY	TOTAL SHEETS	SHEET NO.
9103	05-00046-01-PV	MADISON	25	1
FED. ROAD DIST. NO.		ILLINOIS	FED. AID PROJECT	

CONTRACT NO. 97339

SHEET NUMBER	DESCRIPTION
1	COVER SHEET
2	GENERAL NOTES, AND LEGEND
3	SUMMARY OF QUANTITIES
4	TYPICAL SECTIONS - EXISTING
5	TYPICAL SECTIONS - PROPOSED
6-7	QUANTITY SCHEDULES
8	ADVANCED WARNING SIGNS
9-13	STAGE CONSTRUCTION
14-20	PLAN AND PROFILE SHEETS
21-24	PAVEMENT MARKING SHEETS
25	MISCELLANEOUS DETAILS

STATE OF ILLINOIS
DEPARTMENT OF TRANSPORTATION
DIVISION OF HIGHWAYS
PLANS FOR PROPOSED
ROADWAY IMPROVEMENT
CITY OF MADISON
F.A.U. ROUTE 9103 (WAYNE LANTER AVENUE)
SECTION NO. 05-00046-01-PV
PROJECT NO. M5011 (245)



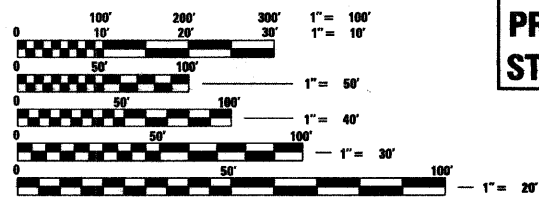
STANDARDS

STD. NO.
000001-05
424001-05
442101-07
442201-03
606001-03
701301-02
701311-02
701501-04
701801-03
701901
780001-01
BLR 21-7

STU FUNDS
MADISON COUNTY
END RESURFACING PROJECT
STATION 5+79.13

SCALES
 PLAN 1"=20'
 PROFILE HORIZ. 1"=20'
 PROFILE VERT. 1"=5'
 CROSS SECTIONS 1"=10' HORIZ.
 1"=5' VERT.

BEGIN RESURFACING PROJECT
STATION 6+01.10



FULL SIZE PLANS HAVE BEEN PREPARED USING STANDARD ENGINEERING SCALES, REDUCED SIZED PLANS WILL NOT CONFORM TO STANDARD SCALES, IN MAKING MEASUREMENTS ON REDUCED PLANS, THE ABOVE SCALES MAY BE USED.

J.U.L.I.E.
 JOINT UTILITY LOCATION INFORMATION FOR EXCAVATION
 1-800-892-0123


DESIGN DESIGNATION
 FUNCTIONAL CLASSIFICATION: COLLECTOR
 ADT: 800 (2006) 976 (2026)
 DHV (2026): 98
 DESIGN SPEED: 30 MPH

CONTRACT NO. 97339

LOCATION MAP
 SCALE: 1" = 750'
 GROSS LENGTH OF PROJECT: 3393.22 LIN. FT. = 0.643 MILES
 SECTIONS 24 & 25, T. 3 N., R. 10 W., 3RD P.M.



Brian E. Kulick 2/27/08
 BRIAN E. KULICK, P.E. No. 020936 DATE
 (Printed by Authority of the State of Illinois)
 Job No. 071005


Juneau Associates, Inc. P.C.
 CONSULTING ENGINEERS AND LAND SURVEYORS
 2100 State Street, P.O. Box 1325
 Granite City, Illinois 62040
 Phone: (618) 877-1400 / (618) 452-5535
 Fax: (618) 452-5541
 100 North Research Drive
 Edwardsville, Illinois 62025
 Phone: (618) 359-0900 / (618) 659-0000
 Fax: (618) 659-0941

F.A.U. RTE.	SECTION	COUNTY	TOTAL SHEETS	SHEET NO.
9103	05-00046-01-PV	MADISON	25	2
FED. ROAD DIST. NO.		ILLINOIS	FED. AID PROJECT	

CONTRACT NO. 97339

LEGEND

	EVERGREEN (5" DIA)		FOUND CONCRETE MONUMENT		WATER LINE
	DECIDUOUS (8" DIA)		WATER METER		GAS LINE
	EVERGREEN SHRUB		GAS METER		OVERHEAD ELECTRIC LINE
	SHRUB		WATER VALVE		TELEPHONE LINE
	FIRE HYDRANT		GAS VALVE		CABLE TV LINE
	SIGN	(TBA) TO BE ADJUSTED			STORM SEWER
	BOLLARD	(TBR) TO BE REMOVED			SANITARY SEWER
	POWER POLE	(TBR&R) TO BE REMOVED & RELOCATED			LIGHT POLE
	POWER POLE WITH DOWN GUY	(TBR&RBO) TO BE REMOVED & RELOCATED BY OTHERS			STORM SEWER MANHOLE
	FENCE	DND DO NOT DISTURB			SANITARY SEWER MANHOLE
	BENCH MARK		PROPERTY LINE		CATCH BASIN
	DITCH/SWALE		EXIST. R.O.W. LINE		INLET
	EXISTING MAILBOX		WOOD POST		

GENERAL NOTES:

ILLINOIS STATE LAW REQUIRES A 48-HR NOTICE BE GIVEN TO ALL UTILITIES BEFORE DIGGING. FIELD MARKING OF FACILITIES MAY BE OBTAINED BY CONTACTING J.U.L.L.E. OR FOR NON-J.U.L.L.E. MEMBERS, THE UTILITY COMPANY DIRECTLY. AGENCIES KNOWN TO HAVE FACILITIES WITHIN THE PROJECT AREA ARE AS FOLLOWS:

- CITY OF MADISON WATER, SANITARY & STORM SEWERS
615 MADISON AVE.
MADISON, IL 62060
(618) 876-6268
- ILLINOIS AMERICAN WATER COMPANY WATER
2000 WEST 24TH STREET
GRANITE CITY, IL 62040
(618) 876-0011
- AMERENIP GAS/ELECTRIC
2600 NORTH CENTER STREET
P.O. BOX 378, MC 0-10
MARYVILLE, IL 62062-0378
GAS: (618) 346-1287
ELECTRIC: (618) 346-1215
- AT & T TELEPHONE
721 MISSOURI AVE.
EAST SAINT LOUIS, IL 62201
(618) 482-6157
- CHARTER COMMUNICATIONS, INC. CABLE
941 CHARTER COMMONS
TOWN & COUNTRY, MO 63017
(636) 220-2174
ATTN: LARRY SAAFIR

MEMBERS OF J.U.L.L.E. (800) 892-0123 ARE INDICATED BY*. NON-J.U.L.L.E. MEMBERS MUST BE NOTIFIED INDIVIDUALLY.

FOR UTILITY LOCATION PURPOSES, THIS PROJECT IS LOCATED IN SECTION 25 OF TOWNSHIP 3 NORTH, RANGE 10 WEST OF THE THIRD PRINCIPAL MERIDIAN.

TREES SHALL BE PRESERVED THROUGH OUT THIS SECTION AS SHOWN ON THE PLANS AND AS DIRECTED BY THE ENGINEER.

REMOVAL OF AGGREGATE MATERIAL AND OIL AND CHIP BITUMINOUS MATERIAL SHALL NOT BE PAID FOR SEPARATELY, BUT WILL BE INCLUDED IN THE CONTRACT.

WHERE RESURFACING DIRECTLY OVER THE EXISTING PAVEMENT, THE CONTRACTOR SHALL CLEAN THE EXISTING SURFACE PRIOR TO THE APPLICATION OF PRIMER COAT AND BITUMINOUS OVERLAY. REFER TO SECTION 406.06 OF THE STANDARD SPECIFICATIONS.

THE CONTRACTOR SHALL CONSTRUCT PAVEMENT SO THAT FLOW ALONG CURBS AND/OR GUTTERS IS MAINTAINED, INCLUDING FLOW THROUGH INTERSECTIONS, AROUND CURB RETURNS AND TO EXISTING INLETS.

EARTHWORK AND MATERIAL REQUIRED IN CONNECTION WITH EXCAVATION, EMBANKMENTS, BACKFILLING BEHIND CURBS, SIDEWALKS, AND DRAINAGE STRUCTURES, AND GRADING AND SHAPING OF AREAS DISTURBED BY THE CONTRACTOR SHALL NOT BE PAID FOR SEPARATELY, BUT SHALL BE CONSIDERED INCLUDED IN VARIOUS ITEMS OF WORK INVOLVED AND NO ADDITIONAL COMPENSATION OR RENUMERATION WILL BE ALLOWED.

THE TOP OF PROPOSED P.C.C. CURB/CURB AND GUTTER SHALL BE CONSTRUCTED AT THE SAME ELEVATION AS THE TOP OF THE EXISTING CURB/CURB AND GUTTER. THIS SHALL BE DONE IN ORDER TO MAINTAIN THE EXISTING DRAINAGE PATTERN TO THE EXISTING INLETS AND TO MAINTAIN THE EXISTING PROFILE.

THE THICKNESS OF HOT-MIX ASPHALT MIXTURES SHOWN ON THE PLANS IS THE AVERAGE THICKNESS. DEVIATIONS FROM THE AVERAGE THICKNESS WILL BE PERMITTED WHEN SUCH DEVIATIONS OCCUR DUE TO IRREGULARITIES IN THE EXISTING SURFACE OR BASE ON WHICH THE BITUMINOUS MIXTURE IS PLACED.

SHORT TERM PAVEMENT MARKINGS SHALL BE APPLIED TO THE MILLED, PRIMED, BINDER COURSE, AND FINAL SURFACE COURSE. ONLY THE REMOVAL OF THE FINAL SURFACE APPLICATION WILL BE PAID FOR (WORK ZONE PAVEMENT MARKING REMOVAL-SO FT). AN AMOUNT OF TEMPORARY PAVEMENT MARKING WHICH EQUALS THE AMOUNT OF PERMANENT PAVEMENT MARKING HAS ALSO BEEN ADDED TO THE PLANS.

THE CONTRACTOR SHALL VERIFY ALL DIMENSIONS AND CONDITIONS IN THE FIELD PRIOR TO CONSTRUCTION AND ORDERING OF MATERIALS.

AT ALL AREAS SHOWN IN THE PLANS WHERE THERE IS MILLING AND RESURFACING, IT IS THE CONTRACTOR'S RESPONSIBILITY TO CONDUCT THE MILLING AND RESURFACING OPERATIONS SO THAT ALL PAVED AREAS SHALL DRAIN TO EXISTING DRAINAGE STRUCTURES ESPECIALLY IN INTERSECTION AREAS.

AT ALL AREAS SHOWN IN THE PLANS WHERE THERE IS MILLING AND RESURFACING, THE MILLING AND RESURFACING OPERATIONS SHALL BE CONDUCTED IN SUCH A MANNER THAT IF THERE IS ANY OBSTRUCTIONS TO EXISTING DRAINAGE STRUCTURES, THESE OBSTRUCTIONS SHALL BE MILLED AWAY AND THE RESURFACING SHALL NOT OBSTRUCT THE STRUCTURE.

The following constants were used in the calculation of quantities for this project:

Hot-mix Asphalt	112 lbs/S.Y./Inch
Bituminous materials (prime coat)	0.07 gal/S.Y. (paved surface)
	0.25 gal/S.Y. (aggregate surface)
Aggregate (prime coat)	4 lbs/S.Y.

THE STANDARDS AND REVISION NUMBERS LISTED SHALL APPLY TO THIS PROJECT.

"ROAD CONSTRUCTION AHEAD" SIGNS SHALL BE PLACED AT THE BEGINNING AND END OF THE PROJECT PLUS THE INTERSECTING SIDE ROADS, AND WILL BE CONSIDERED INCLUDED IN THE TRAFFIC CONTROL PAY ITEMS. ALL CONSTRUCTION SIGNS SHALL BE FLUORESCENT ORANGE.

NO OVERNIGHT LANE CLOSURES SHALL BE PERMITTED ON THIS PROJECT.

ALL EXCAVATED AREAS DUE TO WIDENING AND/OR PATCHING OPERATIONS SHALL BE PROTECTED WITH EXTENDED LEG BARRICADES WITH APPROPRIATE LIGHTS. THIS WILL NOT BE PAID FOR SEPARATELY BUT WILL BE INCLUDED IN THE CONTRACT.

HOT-MIX ASPHALT SURFACE COURSE SHALL BE CONSTRUCTED TO MATCH EXISTING CONDITIONS. GUTTER PANS THAT HAVE BEEN FILLED SHALL BE REFILLED TO THE SAME APPROXIMATE DEPTH AS BEFORE, OR AS INDICATED OTHERWISE IN THE PLANS.

THE CONTRACTOR SHALL BE RESPONSIBLE FOR AN ON-SITE INSPECTION PRIOR TO SUBMITTING A BID ON THIS PROJECT. UPON RECEIPT OF A BID, IT SHALL BE ASSUMED THAT THE CONTRACTOR IS FULLY FAMILIAR WITH THE CONSTRUCTION SITE.

OPEN STOCKPILING OF BITUMINOUS MIXTURES AT TRANSFER POINTS, WHETHER JOB SITE OR PLANT SITE, WILL NOT BE PERMITTED.

THE CONTRACTOR SHALL BE RESPONSIBLE FOR CONTACTING THE FIRE DEPARTMENT AND POLICE DEPARTMENT OF THE RESPECTIVE MUNICIPALITY ANY TIME NORMAL TRAFFIC FLOW ON ANY STREET OR ROAD IS TO BE INTERRUPTED, HOWEVER BRIEFLY.

CITY OF MADISON POLICE DEPARTMENT 618-876-4300 (NON-EMERGENCY)

CITY OF MADISON FIRE DEPARTMENT 618-876-7287 (NON-EMERGENCY)

THE FOLLOWING MIXTURE REQUIREMENTS ARE APPLICABLE FOR THIS PROJECT:

THE FOLLOWING MIXTURE REQUIREMENTS ARE APPLICABLE FOR THIS PROJECT:		
MIXTURE USE	SURFACE	LEV BINDER
AC/PG	PG 64-22	PG 64-22
RAP % (MAX)	10	15
DESIGN AIR VOIDS	4.0% @ Ndes=70	4.0% @ Ndes=70
MIX COMPOSITION (GRADATION MIXTURE)		
FRICTION AGG	MIXTURE C	MIXTURE B

DATE	BY	SURVEYED	PLOTTED	TEMPLATE	CHECKED
NO.					

DATE	BY	SURVEYED	PLOTTED	TEMPLATE	CHECKED
NO.					

Juneau Associates, Inc. P.C.
CONSULTING ENGINEERS AND LAND SURVEYORS
2100 State Street, P.O. Box 1325 Granite City, Illinois 62040 Phone: (618) 271-1400/(618) 482-0537 Fax: (618) 482-0541
100 North Research Drive Edwardsville, Illinois 62025 Phone: (618) 483-0800/(618) 653-0800 Fax: (618) 483-0941

GENERAL NOTES

**WAYNE LANTER AVENUE
MADISON, ILLINOIS
SECTION 05-00046-01-PV**

REVISIONS			
NO.	DATE	BY	REMARKS

SCALE: N.T.S.	
DSN. BY: BFK	DATE: 02/08/08
DWN. BY: DAN	DATE: 02/08/08
CHKD: BFK	DATE: 02/08/08
JOB NO. E071005	DGN. NAME: GENNOTES
OF 25 SHTS	

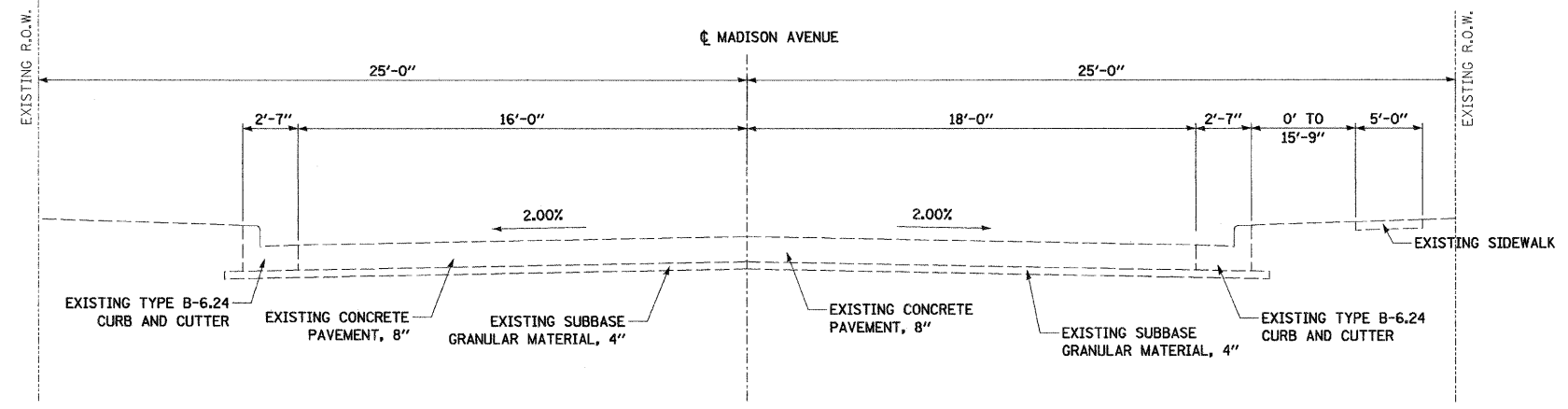
SHEET

2

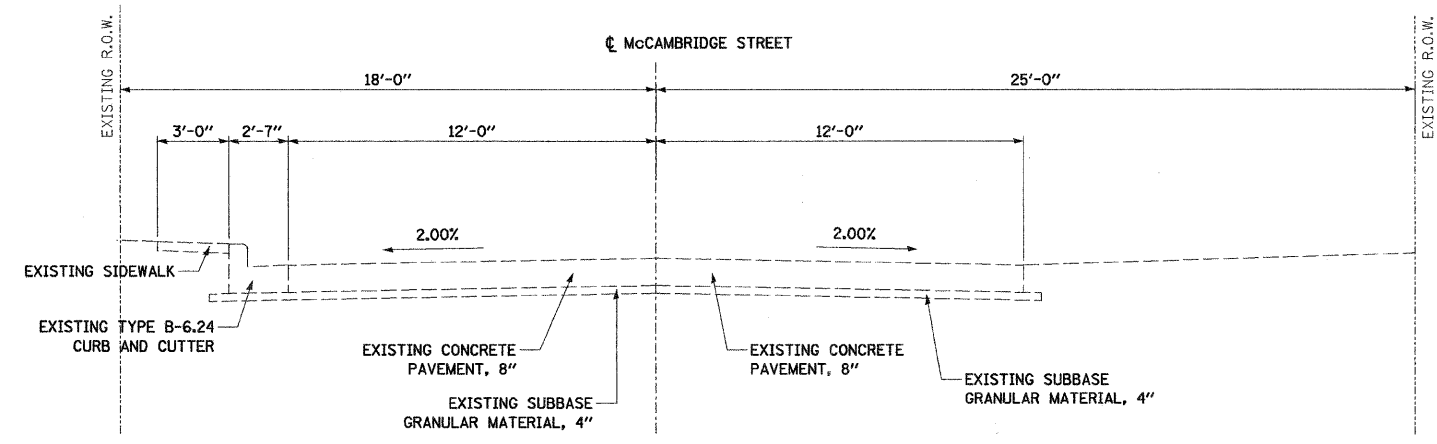
OF 25 SHTS

F.A.U. RTE.	SECTION	COUNTY	TOTAL SHEETS	SHEET NO.
9103	05-00046-01-PV	MADISON	25	4
FED. ROAD DIST. NO.		ILLINOIS	FED. AID PROJECT	

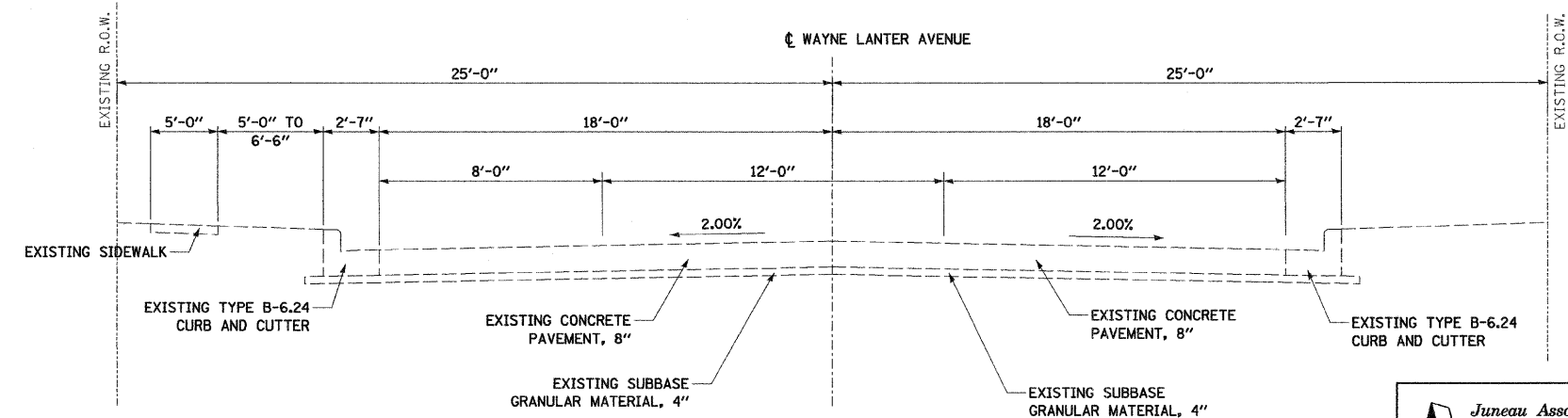
CONTRACT NO. 97339



MADISON AVENUE EXISTING TYPICAL SECTION
 STA. 5+00.00 TO STA. 5+65.10
 (NOT TO SCALE)



McCAMBRIDGE STREET EXISTING TYPICAL SECTION
 STA. 5+00.00 TO STA. 5+43.23
 (NOT TO SCALE)



WAYNE LANTER AVENUE EXISTING TYPICAL SECTION
 STA. 10+00.00 TO STA. 42+12.99
 (NOT TO SCALE)

FINAL SURVEY	BY	DATE
SURVEY PLOTTED		
NOTE BOOK		
TEMPLATE AREAS CHECKED		
NO.		

ORIGINAL SURVEY	BY	DATE
SURVEY PLOTTED		
NOTE BOOK		
TEMPLATE AREAS CHECKED		
NO.		

Juneau Associates, Inc. P.C.
 CONSULTING ENGINEERS AND LAND SURVEYORS
 2100 State Street, P.O. Box 1325
 Granite City, Illinois 62040
 Phone: (618) 271-1400 / (618) 262-9535
 Fax: (618) 452-5541

EXISTING TYPICAL SECTIONS
 WAYNE LANTER AVENUE
 MADISON, ILLINOIS
 SECTION 05-00046-01-PV

REVISIONS			
NO.	DATE	BY	REMARKS

SCALE:	N.T.S.
DSN. BY:	BFK
DATE:	02/08/08
DWN. BY:	WRC
DATE:	02/08/08
CHK'D:	BFK
DATE:	02/08/08
DWG. NO.	E071005
DGN. NAME:	TYP-EX
OF 25 SHTS	4

F.A.U. RTE.	SECTION	COUNTY	TOTAL SHEETS	SHEET NO.
9103	05-00046-01-PV	MADISON	25	6
FED. ROAD DIST. NO.	ILLINOIS	FED. AID PROJECT		

CONTRACT NO. 97339

PATCHING SCHEDULE

LOCATION	LENGTH (FOOT)	CLASS C PATCHES, 8"		CLASS B PATCHES, 8"			DOWEL BARS 1/2" DIA. (EACH)	TIE BARS 1/4" DIA. (EACH)	TIE BARS 3/4" DIA. (EACH)
		TYPE I (SQ YD)	TYPE II (SQ YD)	TYPE II (SQ YD)	TYPE III (SQ YD)	TYPE IV (SQ YD)			
WAYNE LANTER AVENUE									
STA. 10+68.58 TO STA. 10+74.55	6.0					21.1	30	30	
STA. 11+31.52 TO STA. 11+51.35	19.74 - 7.12					36.0	30	30	
STA. 12+17.50 TO STA. 12+22.39	4.9		6.5						
STA. 12+69.98 TO STA. 12+77.51	7.5			9.9			10	10	
STA. 13+67.32 TO STA. 13+69.97	2.7	3.5							
STA. 14+69.74 TO STA. 14+73.29	3.6	2.4							
STA. 15+54.59 TO STA. 15+63.32	8.7					30.9	30	30	
STA. 18+64.66 TO STA. 18+72.90	8.3			11.0			10	10	
STA. 18+68.33 TO STA. 18+72.89	3.4	4.6 - 2.6							
STA. 19+16.94 TO STA. 19+23.26	6.3			8.4			10	10	
STA. 19+67.43 TO STA. 19+73.23	5.8		7.7						
STA. 20+65.84 TO STA. 20+70.21	4.3		5.8						
STA. 21+76.65 TO STA. 21+80.43	3.8		10.0						
STA. 22+20.00 TO STA. 22+23.01	3.0	2.1							
STA. 22+79.30 TO STA. 23+02.95	23.6 - 9.9					47.0	20	20	24
STA. 23+16.71 TO STA. 23+20.44	3.6		8.0						
STA. 23+67.05 TO STA. 23+77.64	10.4			11.9			10	10	
STA. 23+69.75 TO STA. 23+74.53	4.7 - 3.7		11.2						
STA. 24+69.71 TO STA. 24+73.09	3.4	4.5							
STA. 25+16.35 TO STA. 25+22.41	6.1			8.0			10	10	
STA. 26+69.61 TO STA. 27+02.12	32.5					43.9	10	10	34
STA. 27+66.05 TO STA. 27+72.05	6.0			8.1			10	10	
STA. 28+19.88 TO STA. 28+21.53	1.7	2.3							
STA. 28+67.53 TO STA. 28+69.98	2.5	1.3							
STA. 28+69.96 TO STA. 28+74.02	4.1		5.4						
STA. 29+13.21 TO STA. 29+27.67	14.4					32.2	20	20	
STA. 29+81.03 TO STA. 29+85.57	4.5		12.2						
STA. 30+79.34 TO STA. 30+84.96	5.6		6.2						
STA. 30+69.29 TO STA. 30+86.46	17.2 - 7.2					32.6	20	20	
STA. 33+38.51 TO STA. 33+42.14	3.6		12.9						
STA. 34+83.00 TO STA. 34+89.43	6.4				22.8		30	30	
STA. 35+90.07 TO STA. 35+94.96	4.9	4.4							
STA. 35+94.83 TO STA. 36+01.25	6.5				17.1		20	20	
STA. 38+06.23 TO STA. 38+13.65	7.5			10.0			10	10	
STA. 39+75.96 TO STA. 39+85.07	9.0			11.9			10	10	
STA. 39+75.96 TO STA. 39+81.61	5.6 - 4.1		11.2						
STA. 40+76.34 TO STA. 40+83.43	7.1					25.3	30	30	
STA. 41+10.35 TO STA. 41+20.48	10.1			9.0			10	10	
STA. 41+64.36 TO STA. 41+82.92	18.6					65.8	30	30	
TOTAL		21	97	88	61	314	360	360	58

PAVEMENT MARKING SCHEDULE

LOCATION	TYPE	THERMOPLASTIC PAVEMENT MARKINGS			
		4" YELLOW (FOOT)	4" WHITE (FOOT)	6" WHITE (FOOT)	12" WHITE (FOOT)
WAYNE LANTER AVENUE					
STA. 10+00.00 TO STA. 42+12.99					
	SKIP-DASH 10'-30'	861			
	CROSSWALK			548	
	STOP BAR				195
	LANE LINE		2593		
TOTAL		861	2593	548	195

PAVING SCHEDULE

LOCATION	BITUMINOUS MATERIAL PR CT (GALLON)	AGGREGATE PR CT (TON)	HOT-MIX ASPHALT SURF CSE, MIX C, N70 (TON)	LEVELING BINDER (MACHINE METHOD) N70 (TON)
WAYNE LANTER AVENUE				
STA. 10+00.00 TO STA. 42+12.99	1037.8	38.1	1577.0	720.0
TOTAL	1038	38	1577	720

SIDEWALK SCHEDULE

LOCATION	SIDEWALK 4 INCH (SQ FT)
WAYNE LANTER AVENUE	
STA. 16+43.52 - 35.90' RT TO STA. 16+51.67 - 41.62' RT	36.3
STA. 16+88.50 - 41.73' RT TO STA. 16+99.44 - 25.13' RT	65.1
STA. 19+37.17 - 23.95' LT TO STA. 19+81.07 - 28.64' LT	213.64
STA. 23+59.08 - 31.00' LT TO STA. 23+70.90 - 24.28' LT	76.31
STA. 30+79.74 - 24.31' LT TO STA. 30+88.81 - 31.26' LT	45.0
STA. 31+23.21 - 33.56' LT TO STA. 31+34.52 - 23.46' LT	75.15
STA. 36+35.69 - 23.94' LT TO STA. 36+46.52 - 36.84' LT	82.10
STA. 36+83.07 - 33.95' LT TO STA. 36+94.01 - 23.94' LT	71.3
STA. 41+12.72 - 24.34' LT TO STA. 41+23.38 - 29.41' LT	54.21
TOTAL	719

DETECTABLE WARNING SCHEDULE

LOCATION	DETECTABLE WARNINGS (SQ FT)
WAYNE LANTER AVENUE	
STA. 16+46.09 - 36.40' RT TO STA. 16+49.90 - 40.40' RT	8.7
STA. 16+89.84 - 40.40' RT TO STA. 16+93.41 - 36.40' RT	8.5
STA. 16+94.73 - 30.76' RT TO STA. 16+98.15 - 29.76' RT	11.01
STA. 23+61.64 - 29.64' LT TO STA. 23+69.92 - 24.76' LT	15.53
STA. 30+80.54 - 24.81' LT TO STA. 30+87.11 - 30.03' LT	13.2
STA. 31+24.45 - 33.60' LT TO STA. 31+30.80 - 25.95' LT	19.76
STA. 36+36.91 - 24.45' LT TO STA. 36+43.74 - 29.98' LT	14.82
STA. 36+86.08 - 29.24' LT TO STA. 36+92.87 - 24.44' LT	12.5
TOTAL	104

DATE	BY
SURVEYED	
PLOTTED	
NOTE BOOK	
TEMPLATE	
AREAS CHECKED	
NO.	

DATE	BY
SURVEYED	
PLOTTED	
NOTE BOOK	
TEMPLATE	
AREAS CHECKED	
NO.	

Juneau Associates, Inc. P.C.
CONSULTING ENGINEERS AND LAND SURVEYORS
2100 State Street, P.O. Box 1325
Ottawa, Illinois 62450
Phone: (314) 387-1400 / (314) 387-4522
Fax: (314) 387-0541

QUANTITY SCHEDULES
WAYNE LANTER AVENUE
MADISON, ILLINOIS
SECTION 05-00046-01-PV

REVISIONS			
NO.	DATE	BY	REMARKS

SCALE:	N.T.S.
DSN. BY:	BFK
DATE:	02/08/08
DWN. BY:	DAN
DATE:	02/08/08
CHK'D:	BFK
DATE:	02/08/08
DWG. NO.	E071005
DGN. NAME:	COMBSCHD
OF 25 SHTS	

F.A.U. RTE.	SECTION	COUNTY	TOTAL SHEETS	SHEET NO.
9103	05-00046-01-PV	MADISON	25	7
FED. ROAD DIST. NO.	ILLINOIS	FED. AID PROJECT		

CONTRACT NO. 97339

SIDEWALK REMOVAL SCHEDULE

LOCATION	SIDEWALK REMOVAL (SQ FT)
WAYNE LANTER AVENUE	
STA. 16+43.50 - 34.74' RT TO STA. 16+46.62 - 40.40' RT	17.6
STA. 16+94.74 - 29.91' RT TO STA. 16+98.09 - 35.50' RT	25.7
STA. 19+37.17 - 23.97' LT TO STA. 19+57.02 - 28.56' LT	91.99
STA. 19+61.20 - 23.86' LT TO STA. 19+81.07 - 28.64' LT	96.83
STA. 23+62.11 - 28.21' LT TO STA. 23+70.88 - 24.78' LT	60.54
STA. 30+79.74 - 24.31' LT TO STA. 30+87.66 - 30.03' LT	35.2
STA. 31+23.67 - 35.06' LT TO STA. 31+34.52 - 23.46' LT	58.85
STA. 36+35.69 - 24.44' LT TO STA. 36+45.77 - 36.85' LT	62.07
STA. 36+83.78 - 34.06' LT TO STA. 36+93.99 - 29.16' LT	54.2
STA. 41+12.72 - 24.34' LT TO STA. 41+23.38 - 29.41' LT	54.34
TOTAL	557

HOT-MIX ASPHALT SURFACE REMOVAL - BUTT JOINT SCHEDULE

LOCATION	HOT-MIX ASP. SURF. REMOVAL - BUTT JOINT (SQ YD)
MADISON AVENUE STA. 5+81.10 TO STA. 6+01.10	79.2
WASHINGTON AVENUE STA. 5+65.80 TO STA. 5+85.80 STA. 7+14.15 TO STA. 7+34.15	72.3 80.1
EWING AVENUE STA. 5+67.18 TO STA. 5+87.18	70.4
ALTON STREET STA. 5+57.85 TO STA. 5+77.85	72.2
HIGHLAND STREET STA. 5+58.02 TO STA. 5+78.02	78.2
McCAMBRIDGE STREET STA. 5+59.13 TO STA. 5+79.13	52.6
TOTAL	505

COMBINATION CONCRETE CURB & GUTTER SCHEDULE


LOCATION	COMBINATION CONCRETE CURB & GUTTER TY B-6.18 (FOOT)
WAYNE LANTER AVENUE	
STA. 30+68.90 - 16.25' RT TO STA. 30+70.73 - 16.25' RT	1.83
STA. 35+94.58 - 15.88' RT TO STA. 35+97.86 - 15.90' RT	3.27
STA. 39+75.95 - 16.28' LT TO STA. 39+80.06 - 16.28' LT	4.12
TOTAL	9

COMBINATION CURB & GUTTER REMOVAL SCHEDULE

LOCATION	COMBINATION CURB & GUTTER REMOVAL (FOOT)
WAYNE LANTER AVENUE	
STA. 30+68.90 - 16.25' RT TO STA. 30+70.73 - 16.25' RT	1.83
STA. 35+94.58 - 15.88' RT TO STA. 35+97.86 - 15.90' RT	3.27
STA. 39+75.95 - 16.28' LT TO STA. 39+80.06 - 16.28' LT	4.12
TOTAL	9

DATE	BY	SURVEYED	PLOTTED	TEMPLATE	CHECKED
FINAL SURVEY NO.	NOTE BOOK NO.	AREAS	AREAS	AREAS	AREAS

DATE	BY	SURVEYED	PLOTTED	TEMPLATE	CHECKED
ORIGINAL SURVEY NO.	NOTE BOOK NO.	AREAS	AREAS	AREAS	AREAS

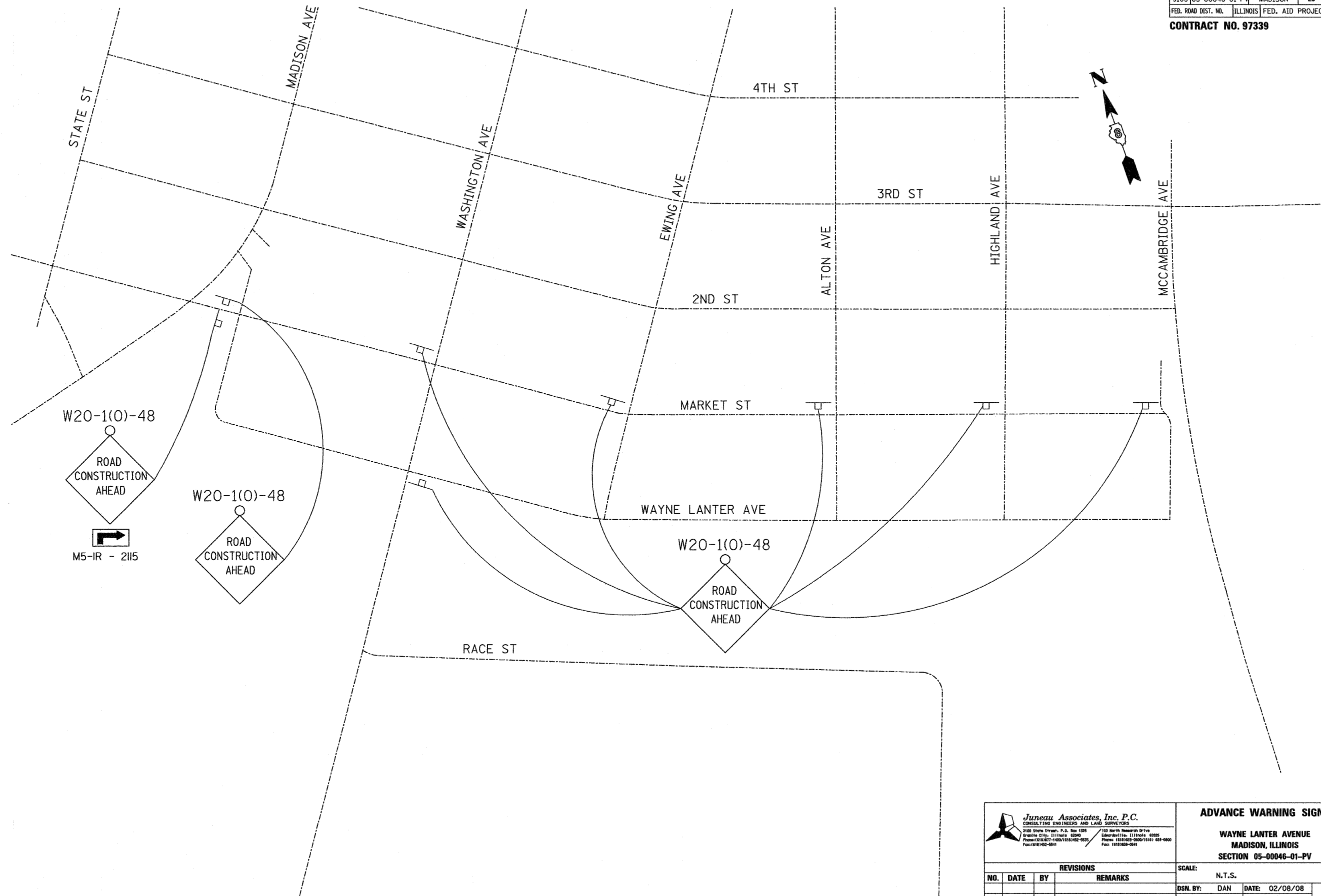
 Juneau Associates, Inc. P.C. CONSULTING ENGINEERS AND LAND SURVEYORS 2100 State Street, P.O. Box 1325 Granite City, Illinois 62040 Phone: (1988)877-1400 / (1988)482-5535 Fax: (1988)482-5541		QUANTITY SCHEDULES WAYNE LANTER AVENUE MADISON, ILLINOIS SECTION 05-00046-01-PV	
REVISIONS NO. DATE BY REMARKS		SCALE: N.T.S.	
DSN. BY: BFK DATE: 02/08/08		SHEET 7	
DWN. BY: DAN DATE: 02/08/08			
CHK'D: BFK DATE: 02/08/08			
DWG. NO.		JOB NO. E071005 DGN. NAME: COMBSCHD OF 25 SHTS	

F.A.U. RTE.	SECTION	COUNTY	TOTAL SHEETS	SHEET NO.
9103	05-00046-01-PV	MADISON	25	8
FED. ROAD DIST. NO.	ILLINOIS	FED. AID PROJECT		

CONTRACT NO. 97339

FINAL SURVEY NOTE BOOK NO.	SURVEYED PLOTTED TEMPLATE AREAS CHECKED	BY	DATE

ORIGINAL SURVEY NOTE BOOK NO.	SURVEYED PLOTTED TEMPLATE AREAS CHECKED	BY	DATE



Juneau Associates, Inc. P.C.
CONSULTING ENGINEERS AND LAND SURVEYORS
2108 State Street, P.O. Box 1325 / 150 North Research Drive
Orland Park, Illinois 60450 / Edwardsville, Illinois 62025
Phone: (618) 927-1400 / (618) 482-9235 / Phone: (618) 363-3900 / (618) 482-9800
Fax: (618) 482-9811 / Fax: (618) 363-2641

ADVANCE WARNING SIGNS
WAYNE LANTER AVENUE
MADISON, ILLINOIS
SECTION 05-00046-01-PV

REVISIONS			
NO.	DATE	BY	REMARKS

SCALE: N.T.S.			
DSN. BY: DAN	DATE: 02/08/08	SHEET	
DWNL BY: DAN	DATE: 02/08/08	8	
CHK'D: BFK	DATE: 02/08/08		
JOB NO. E071005	DGN. NAME: WNSIGN08	OF 25 SHTS	

F.A.U. RTE.	SECTION	COUNTY	TOTAL SHEETS	SHEET NO.
9103	05-00046-01-PV	MADISON	25	9
FED. ROAD DIST. NO.	ILLINOIS	FED. AID PROJECT		

CONTRACT NO. 97339

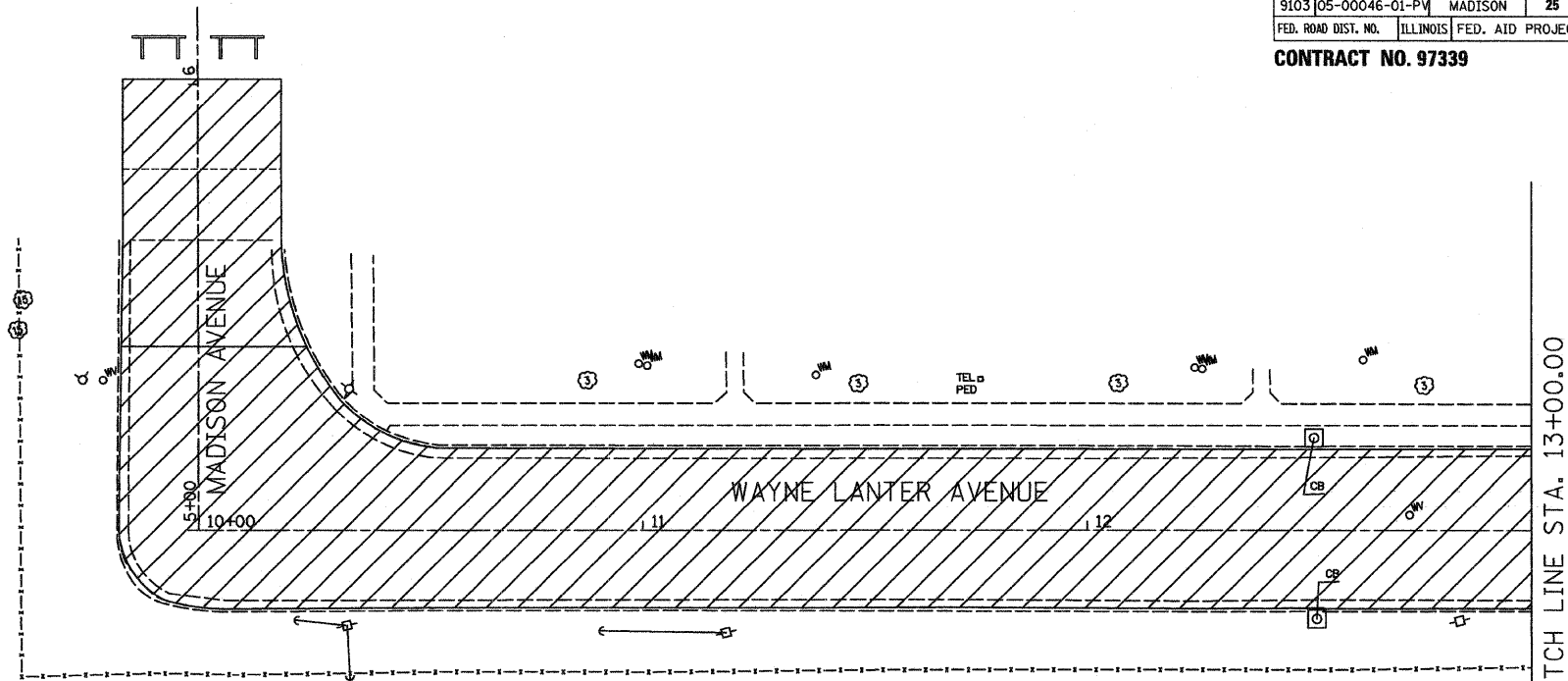
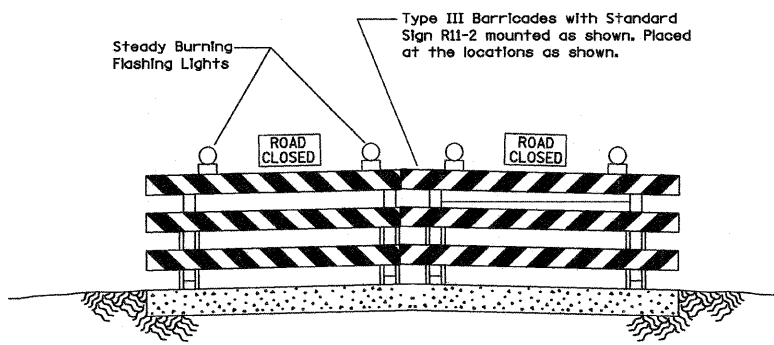


NOTE:

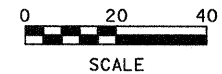
THE SEQUENCE OF CONSTRUCTION INDICATED HERE ON IS INTENDED TO PERMIT THE CONSTRUCTION OF THIS SECTION WITH THE LEAST INCONVENIENCE TO THE TRAVELING PUBLIC. THIS GENERAL SEQUENCE IS IN NO WAY MEANT TO LIMIT CONCURRENT OPERATIONS OR ALTERNATE METHODS USED TO COMPLETE THE REQUIRED ITEMS OF WORK. THE CONTRACTOR SHALL CONDUCT HIS OPERATIONS ACCORDING TO THE DETAILS SHOWN IN THE PLANS FOR STAGE CONSTRUCTION AND SHALL BE RESPONSIBLE FOR COORDINATION OF HIS ACTIVITIES IN ORDER TO PROVIDE A SMOOTH TRANSITION IN THE CHANGE OF STAGES.

IN ORDER TO MINIMIZE THE INCONVENIENCE TO THROUGH TRAFFIC, THE CONTRACTOR SHALL ERECT THE ADVANCE WARNING SIGNS ACCORDING TO THE DETAILS AS SHOWN IN THE PLANS. THE ADVANCE WARNING SIGNS SHALL REMAIN IN PLACE THROUGHOUT THE DURATION OF THE PROJECT.

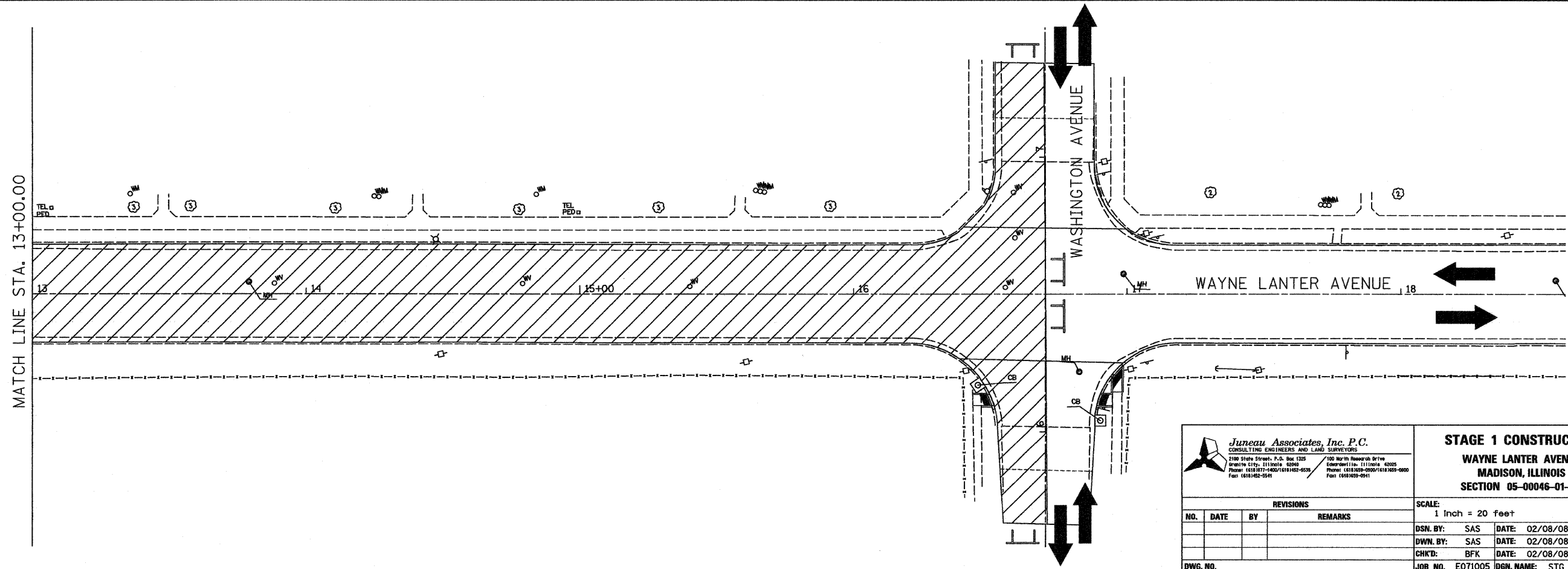
FINAL SURVEY PLOTTED	DATE
NOTE BOOK	
AREAS CHECKED	
NO.	



COMPLETED DURING THIS STAGE



ORIGINAL SURVEY PLOTTED	DATE
NOTE BOOK	
AREAS CHECKED	
NO.	



Juneau Associates, Inc. P.C.
CONSULTING ENGINEERS AND LAND SURVEYORS
2100 State Street, P.O. Box 1325
Madison City, Illinois 62241
Phone: (618) 937-4007 / (618) 937-6530
Fax: (618) 937-5541

STAGE 1 CONSTRUCTION
WAYNE LANTER AVENUE
MADISON, ILLINOIS
SECTION 05-00046-01-PV

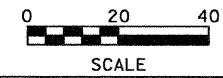
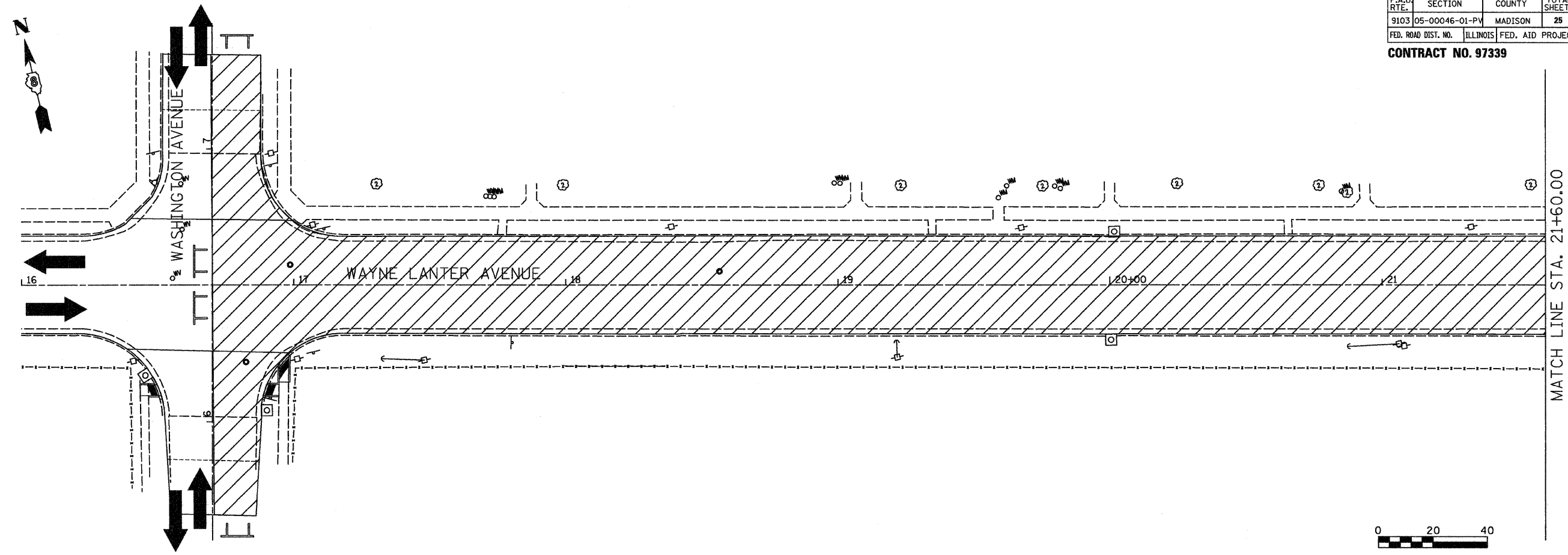
REVISIONS			
NO.	DATE	BY	REMARKS

SCALE: 1 Inch = 20 feet		SHEET 9
DSN. BY: SAS	DATE: 02/08/08	
DWN. BY: SAS	DATE: 02/08/08	OF 25 SHTS
CHKD: BFK	DATE: 02/08/08	
DWG. NO.	JOB NO. E071005	DGN. NAME: STG 1

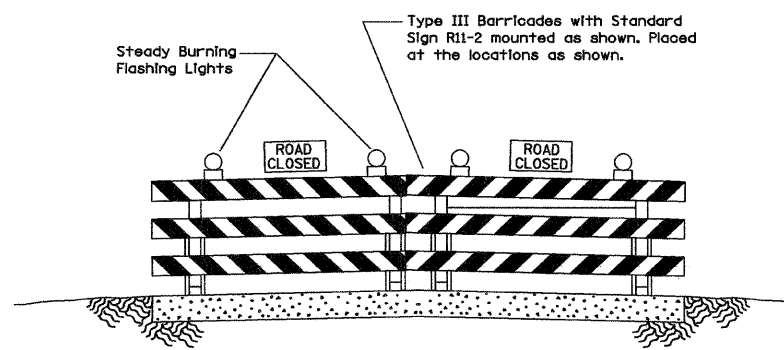
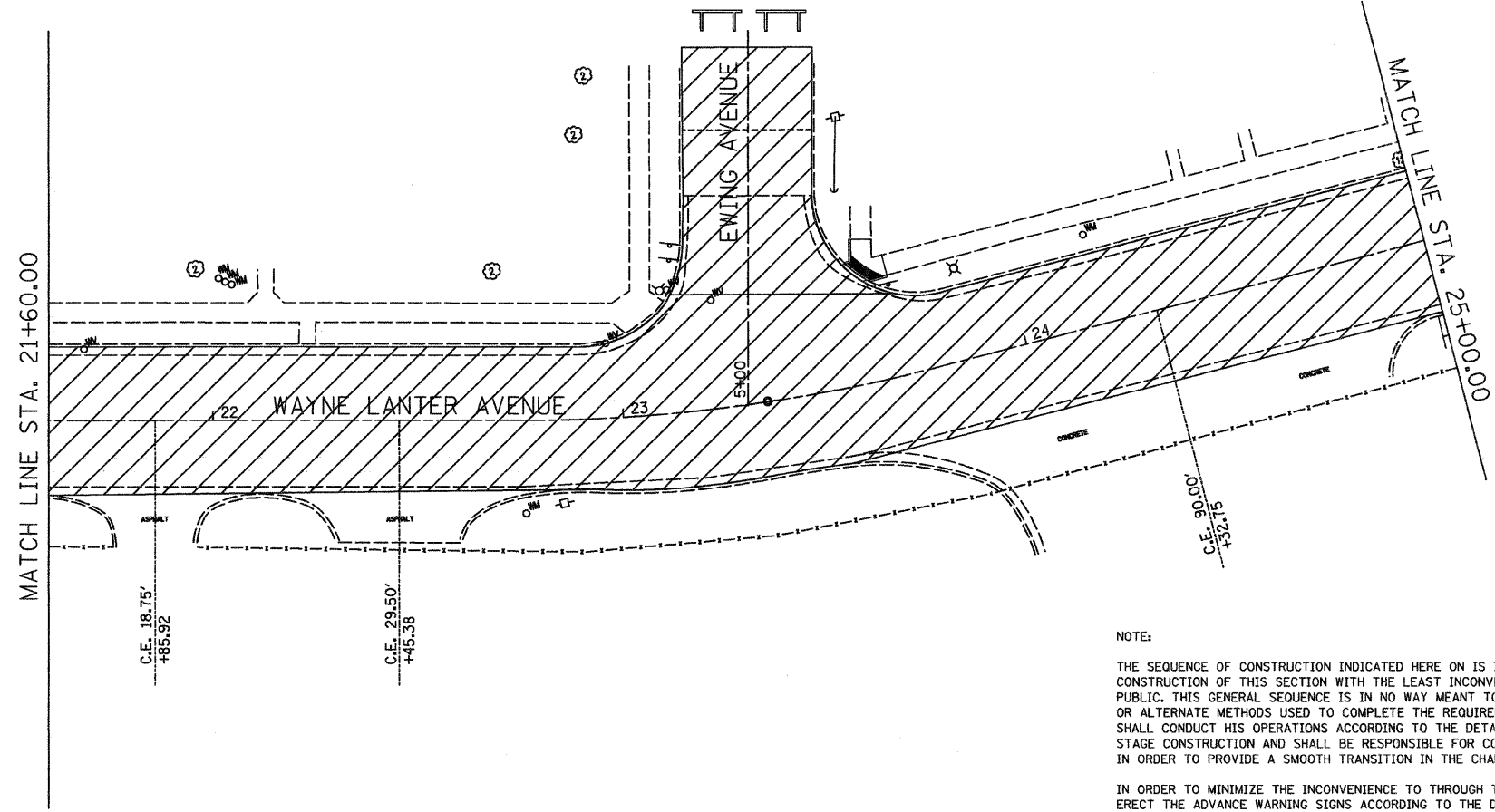
F.A.U. RTE.	SECTION	COUNTY	TOTAL SHEETS	SHEET NO.
9103	05-00046-01-PV	MADISON	25	10
FED. ROAD DIST. NO.	ILLINOIS	FED. AID PROJECT		

CONTRACT NO. 97339

FINAL SURVEY	DATE
SURVEYED	BY
PLOTTED	
NOTE BOOK	
TEMPLATE	
AREAS CHECKED	
NO.	



ORIGINAL SURVEY	DATE
SURVEYED	BY
PLOTTED	
NOTE BOOK	
TEMPLATE	
AREAS CHECKED	
NO.	



COMPLETED DURING THIS STAGE

NOTE:
 THE SEQUENCE OF CONSTRUCTION INDICATED HERE ON IS INTENDED TO PERMIT THE CONSTRUCTION OF THIS SECTION WITH THE LEAST INCONVENIENCE TO THE TRAVELING PUBLIC. THIS GENERAL SEQUENCE IS IN NO WAY MEANT TO LIMIT CONCURRENT OPERATIONS OR ALTERNATE METHODS USED TO COMPLETE THE REQUIRED ITEMS OF WORK. THE CONTRACTOR SHALL CONDUCT HIS OPERATIONS ACCORDING TO THE DETAILS SHOWN IN THE PLANS FOR STAGE CONSTRUCTION AND SHALL BE RESPONSIBLE FOR COORDINATION OF HIS ACTIVITIES IN ORDER TO PROVIDE A SMOOTH TRANSITION IN THE CHANGE OF STAGES.

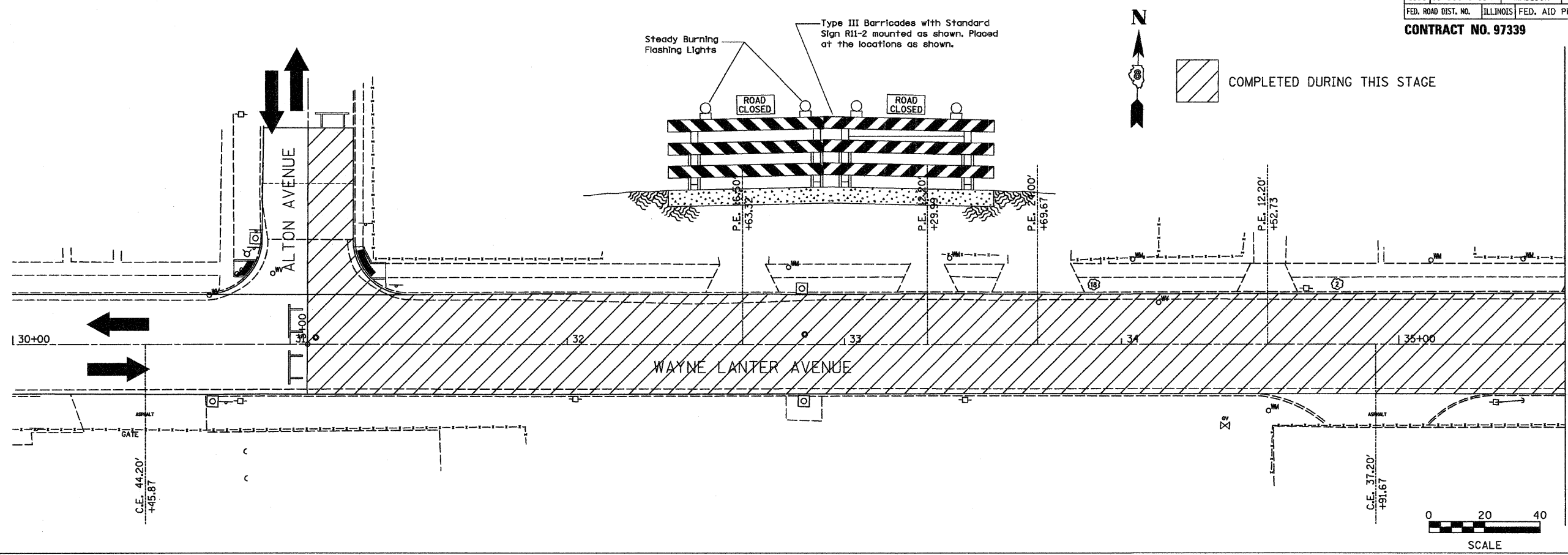
IN ORDER TO MINIMIZE THE INCONVENIENCE TO THROUGH TRAFFIC, THE CONTRACTOR SHALL ERECT THE ADVANCE WARNING SIGNS ACCORDING TO THE DETAILS AS SHOWN IN THE PLANS. THE ADVANCE WARNING SIGNS SHALL REMAIN IN PLACE THROUGHOUT THE DURATION OF THE PROJECT.

<p>Juneau Associates, Inc. P.C. CONSULTING ENGINEERS AND LAND SURVEYORS 2100 State Street, P.O. Box 1325 Granite City, Illinois 62040 Phone: (618) 387-1400 / (618) 452-6535 Fax: (618) 452-5541</p>		<p>STAGE 2 CONSTRUCTION WAYNE LANTER AVENUE MADISON, ILLINOIS SECTION 05-00046-01-PV</p>													
<table border="1"> <thead> <tr> <th colspan="4">REVISIONS</th> </tr> <tr> <th>NO.</th> <th>DATE</th> <th>BY</th> <th>REMARKS</th> </tr> </thead> <tbody> <tr> <td> </td> <td> </td> <td> </td> <td> </td> </tr> </tbody> </table>		REVISIONS				NO.	DATE	BY	REMARKS					<p>SCALE: 1 Inch = 20 feet</p>	
REVISIONS															
NO.	DATE	BY	REMARKS												
<table border="1"> <tr> <td>DSN. BY: SAS</td> <td>DATE: 02/08/08</td> <td rowspan="3">SHEET 10</td> </tr> <tr> <td>DWN. BY: SAS</td> <td>DATE: 02/08/08</td> </tr> <tr> <td>CHK'D: BFK</td> <td>DATE: 02/08/08</td> </tr> </table>		DSN. BY: SAS	DATE: 02/08/08	SHEET 10	DWN. BY: SAS	DATE: 02/08/08	CHK'D: BFK	DATE: 02/08/08	<p>JOB NO. E071005 DGN. NAME: STG 2 OF 25 SHWS</p>						
DSN. BY: SAS	DATE: 02/08/08	SHEET 10													
DWN. BY: SAS	DATE: 02/08/08														
CHK'D: BFK	DATE: 02/08/08														

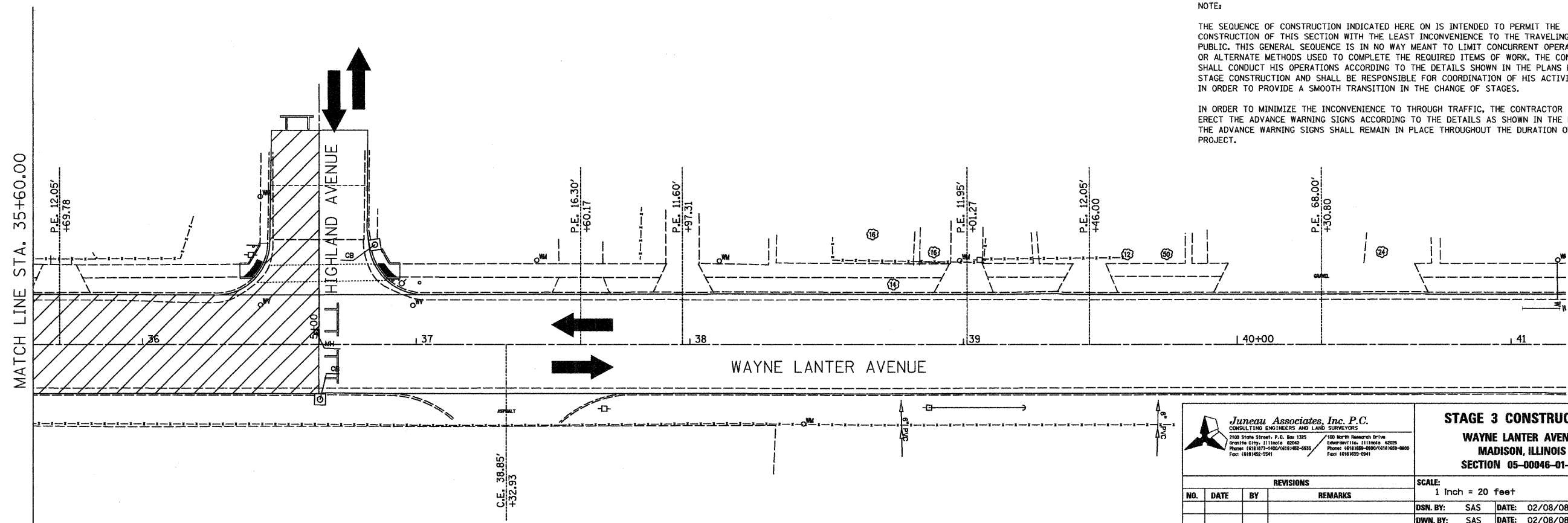
F.A.I. RTE.	SECTION	COUNTY	TOTAL SHEETS	SHEET NO.
9103	05-00046-01-PV	MADISON	25	12
FED. ROAD DIST. NO.	ILLINOIS	FED. AID PROJECT		

CONTRACT NO. 97339

FINAL SURVEY PLOTTED	BY	DATE
NOTE BOOK TEMPLATE		
AREAS CHECKED		
NO.		



ORIGINAL SURVEY PLOTTED	BY	DATE
NOTE BOOK TEMPLATE		
AREAS CHECKED		
NO.		



NOTE:

THE SEQUENCE OF CONSTRUCTION INDICATED HERE ON IS INTENDED TO PERMIT THE CONSTRUCTION OF THIS SECTION WITH THE LEAST INCONVENIENCE TO THE TRAVELING PUBLIC. THIS GENERAL SEQUENCE IS IN NO WAY MEANT TO LIMIT CONCURRENT OPERATIONS OR ALTERNATE METHODS USED TO COMPLETE THE REQUIRED ITEMS OF WORK. THE CONTRACTOR SHALL CONDUCT HIS OPERATIONS ACCORDING TO THE DETAILS SHOWN IN THE PLANS FOR STAGE CONSTRUCTION AND SHALL BE RESPONSIBLE FOR COORDINATION OF HIS ACTIVITIES IN ORDER TO PROVIDE A SMOOTH TRANSITION IN THE CHANGE OF STAGES.

IN ORDER TO MINIMIZE THE INCONVENIENCE TO THROUGH TRAFFIC, THE CONTRACTOR SHALL ERECT THE ADVANCE WARNING SIGNS ACCORDING TO THE DETAILS AS SHOWN IN THE PLANS. THE ADVANCE WARNING SIGNS SHALL REMAIN IN PLACE THROUGHOUT THE DURATION OF THE PROJECT.

Juneau Associates, Inc. P.C.
 CONSULTING ENGINEERS AND LAND SURVEYORS
 2100 State Street, P.O. Box 1325
 Granite City, Illinois 62040
 Phone: (618) 977-1400 / (618) 952-5535
 Fax: (618) 952-2541

100 North Research Drive
 Edwardsville, Illinois 62025
 Phone: (618) 398-0900 / (618) 395-0800
 Fax: (618) 395-0941

STAGE 3 CONSTRUCTION
WAYNE LANTER AVENUE
MADISON, ILLINOIS
SECTION 05-00046-01-PV



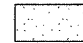


REVISIONS			
NO.	DATE	BY	REMARKS

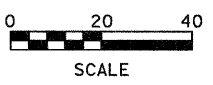
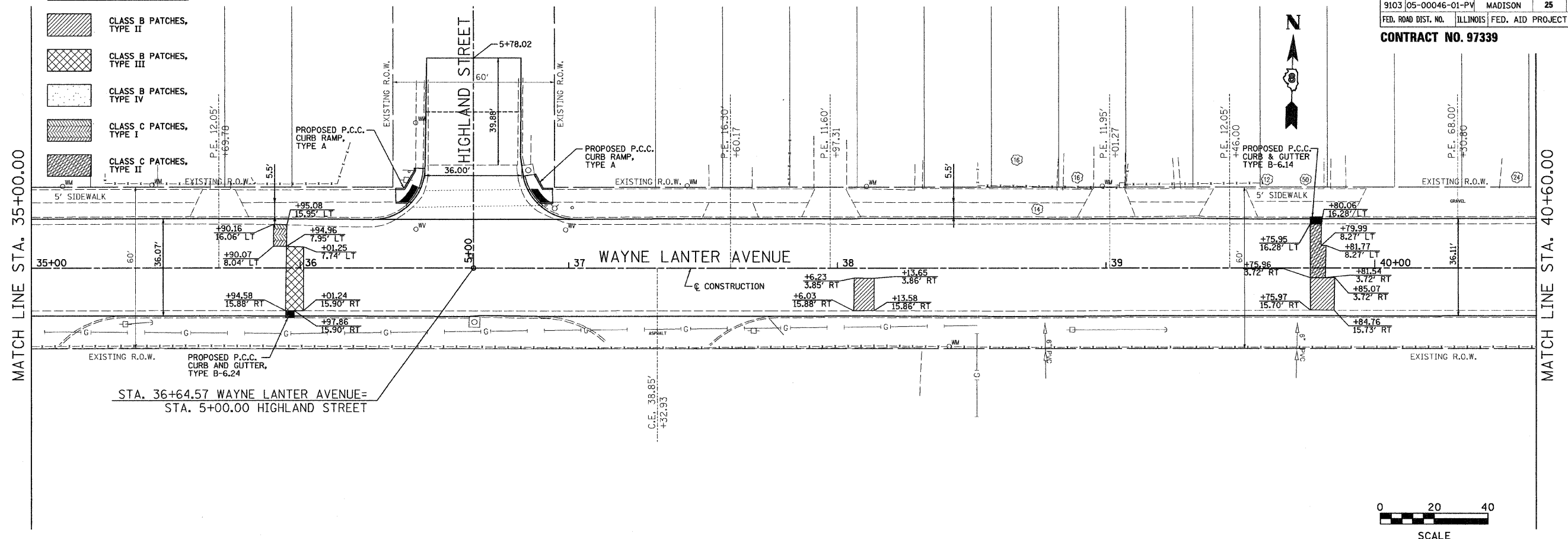
SCALE: 1 inch = 20 feet		SHEET 12
DSN. BY: SAS	DATE: 02/08/08	
DWN. BY: SAS	DATE: 02/08/08	JOB NO. E071005
CHKD: BFK	DATE: 02/08/08	
DWG. NO.		DGN. NAME: STG 4 OF 25 SHTS

F.A.U. RTE.	SECTION	COUNTY	TOTAL SHEETS	SHEET NO.
9103	05-00046-01-PV	MADISON	25	19
FED. ROAD DIST. NO.		ILLINOIS FED. AID PROJECT		

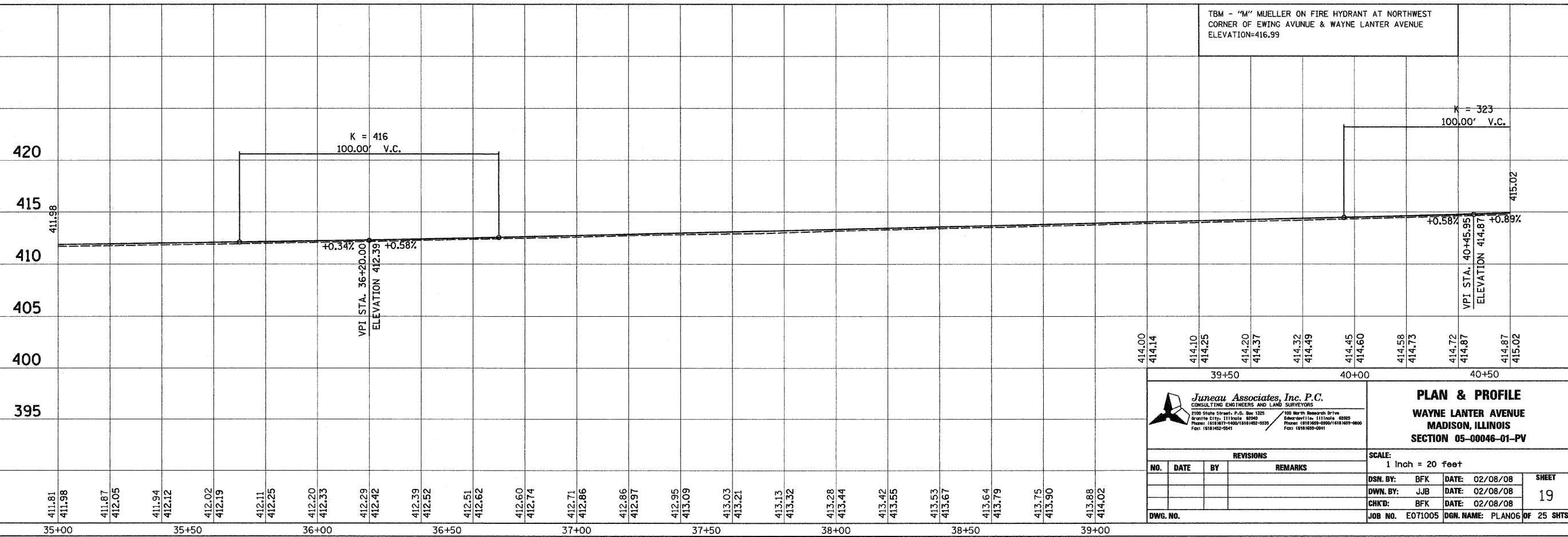
CONTRACT NO. 97339

LEGEND

-  CLASS B PATCHES, TYPE II
-  CLASS B PATCHES, TYPE III
-  CLASS B PATCHES, TYPE IV
-  CLASS C PATCHES, TYPE I
-  CLASS C PATCHES, TYPE II



TBM - "M" MUELLER ON FIRE HYDRANT AT NORTHWEST CORNER OF EWING AVENUE & WAYNE LANTER AVENUE ELEVATION=416.99



Juneau Associates, Inc. P.C.
CONSULTING ENGINEERS AND LAND SURVEYORS
2100 State Street, P.O. Box 1325
Madison, IL 61702-1325
Phone: (618)827-4400/(618)452-5555
Fax: (618)452-2941

PLAN & PROFILE
WAYNE LANTER AVENUE
MADISON, ILLINOIS
SECTION 05-00046-01-PV

REVISIONS			
NO.	DATE	BY	REMARKS

SCALE: 1 inch = 20 feet			
DSN. BY:	BFK	DATE:	02/08/08
DWN. BY:	JJB	DATE:	02/08/08
CHK'D:	BFK	DATE:	02/08/08
DWG. NO.	JOB NO. E071005	DGN. NAME:	PLAN06 OF 25 SHTS

FINAL SURVEY	BY	DATE
SURVEY PLOTTED		
NOTE BOOK TEMPLATE		
AREAS CHECKED		
NO.		

ORIGINAL SURVEY	BY	DATE
SURVEY PLOTTED		
NOTE BOOK TEMPLATE		
AREAS CHECKED		
NO.		

F.A.U. RTE.	SECTION	COUNTY	TOTAL SHEETS	SHEET NO.
9103	05-00046-01-PV	MADISON	25	20
FED. ROAD DIST. NO.	ILLINOIS	FED. AID PROJECT		

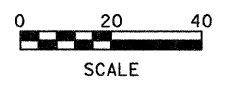
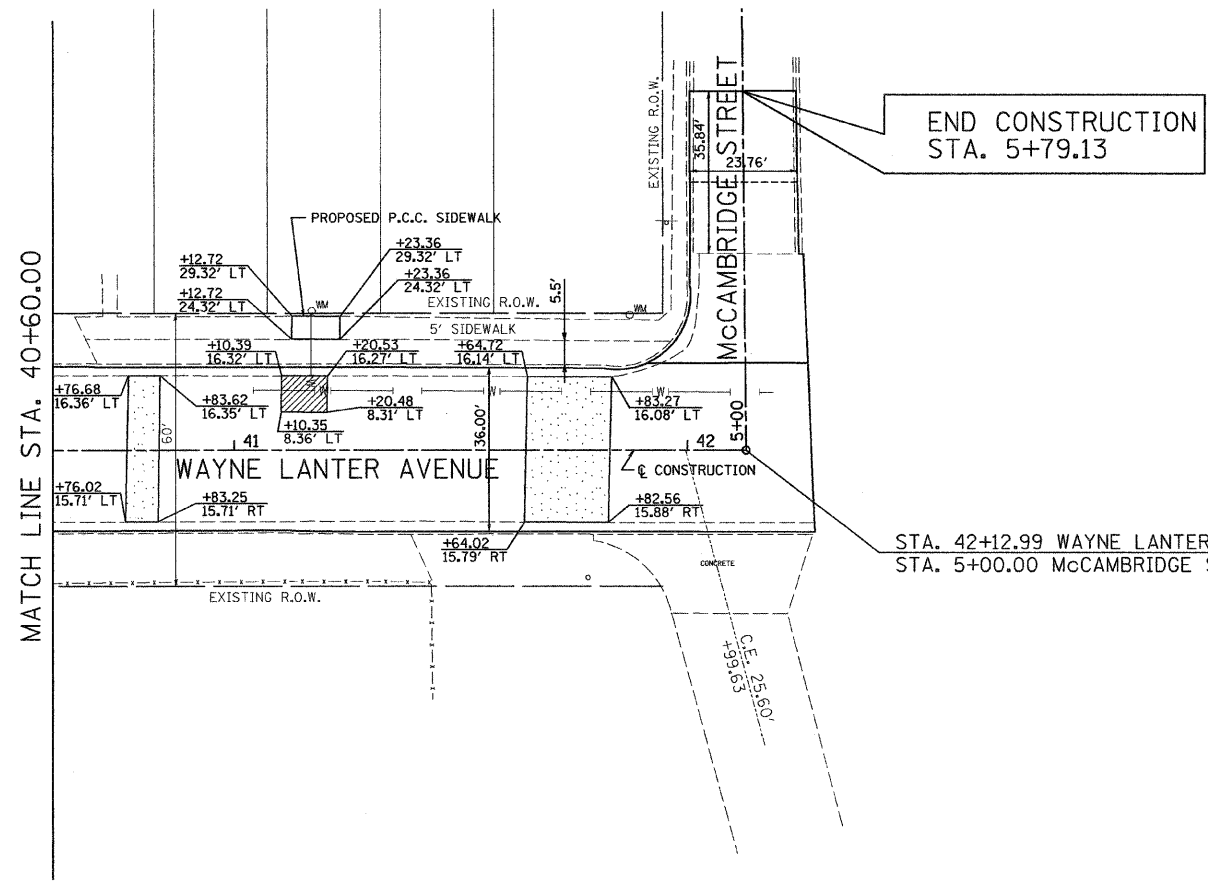
CONTRACT NO. 97339



LEGEND

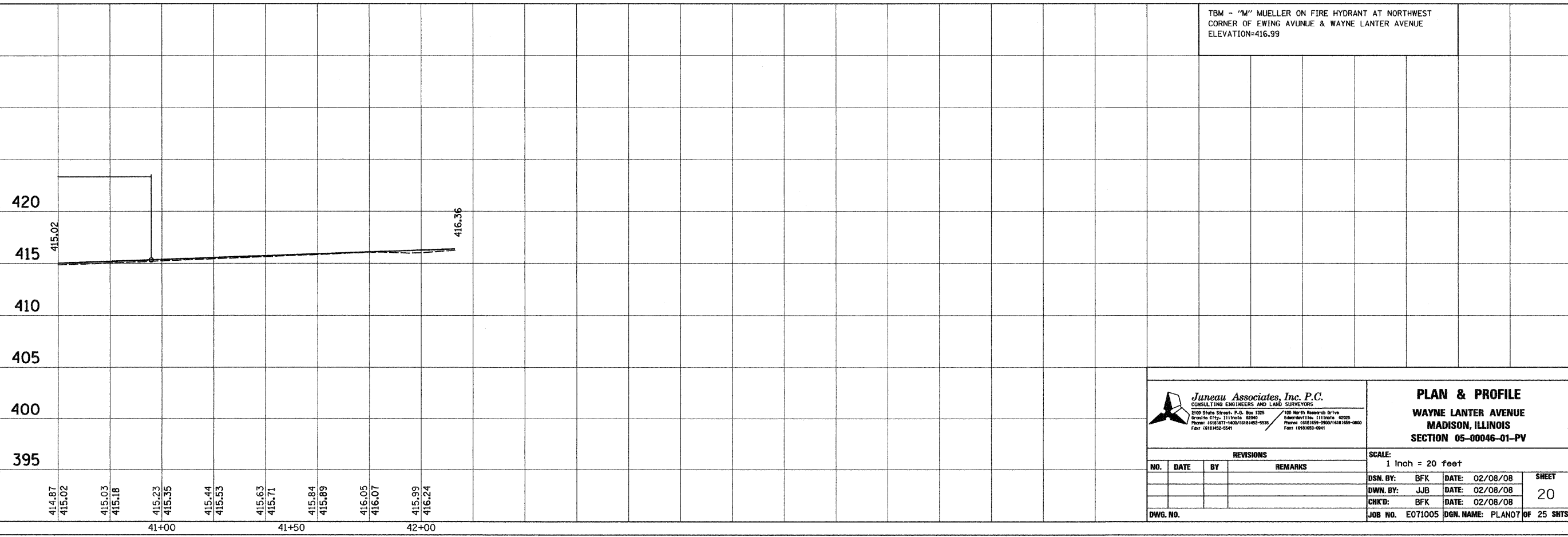
- CLASS B PATCHES, TYPE II
- CLASS B PATCHES, TYPE III
- CLASS B PATCHES, TYPE IV
- CLASS C PATCHES, TYPE I
- CLASS C PATCHES, TYPE II

FINAL SURVEY	BY	DATE
SURVEYED		
PLOTTED		
NOTE BOOK TEMPLATE		
AREAS CHECKED		
NO.		



TBM - "M" MUELLER ON FIRE HYDRANT AT NORTHWEST CORNER OF EWING AVENUE & WAYNE LANTER AVENUE ELEVATION=416.99

ORIGINAL SURVEY	BY	DATE
SURVEYED		
PLOTTED		
NOTE BOOK TEMPLATE		



Juneau Associates, Inc. P.C.
CONSULTING ENGINEERS AND LAND SURVEYORS
2100 Stone Street, P.O. Box 1205
Geneva, IL 60135
Phone: (618) 952-0441 / (618) 952-0442 / (618) 952-0443
Fax: (618) 952-0441

PLAN & PROFILE
WAYNE LANTER AVENUE
MADISON, ILLINOIS
SECTION 05-00046-01-PV

REVISIONS			
NO.	DATE	BY	REMARKS

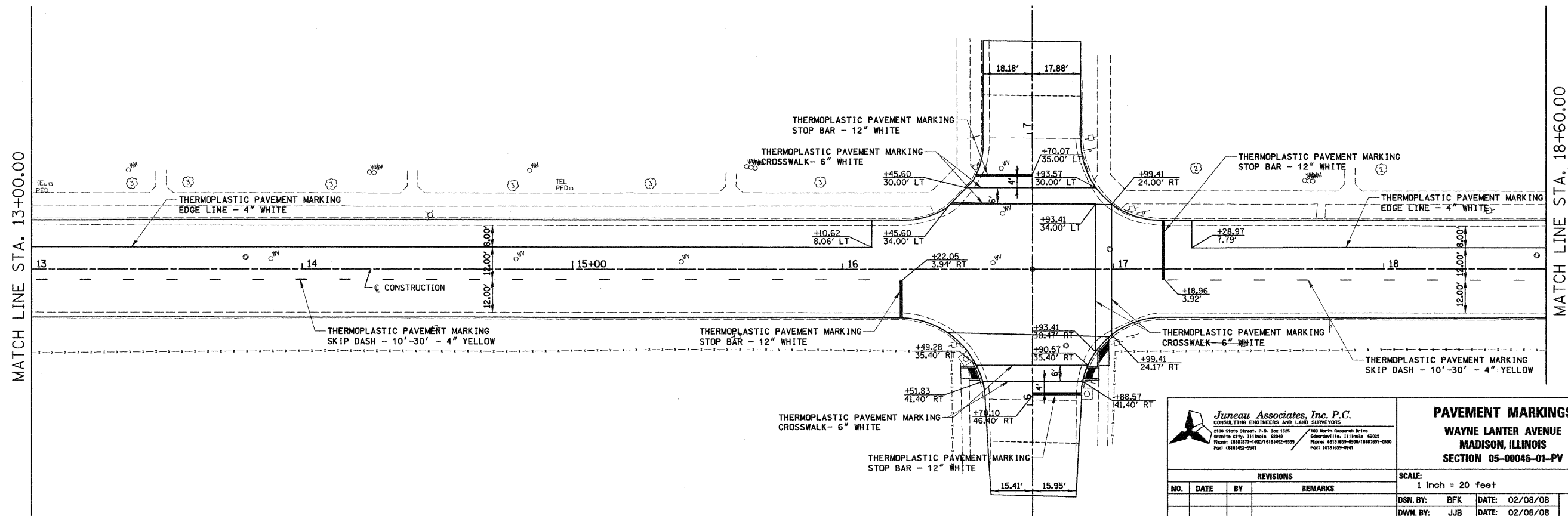
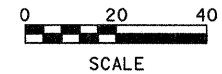
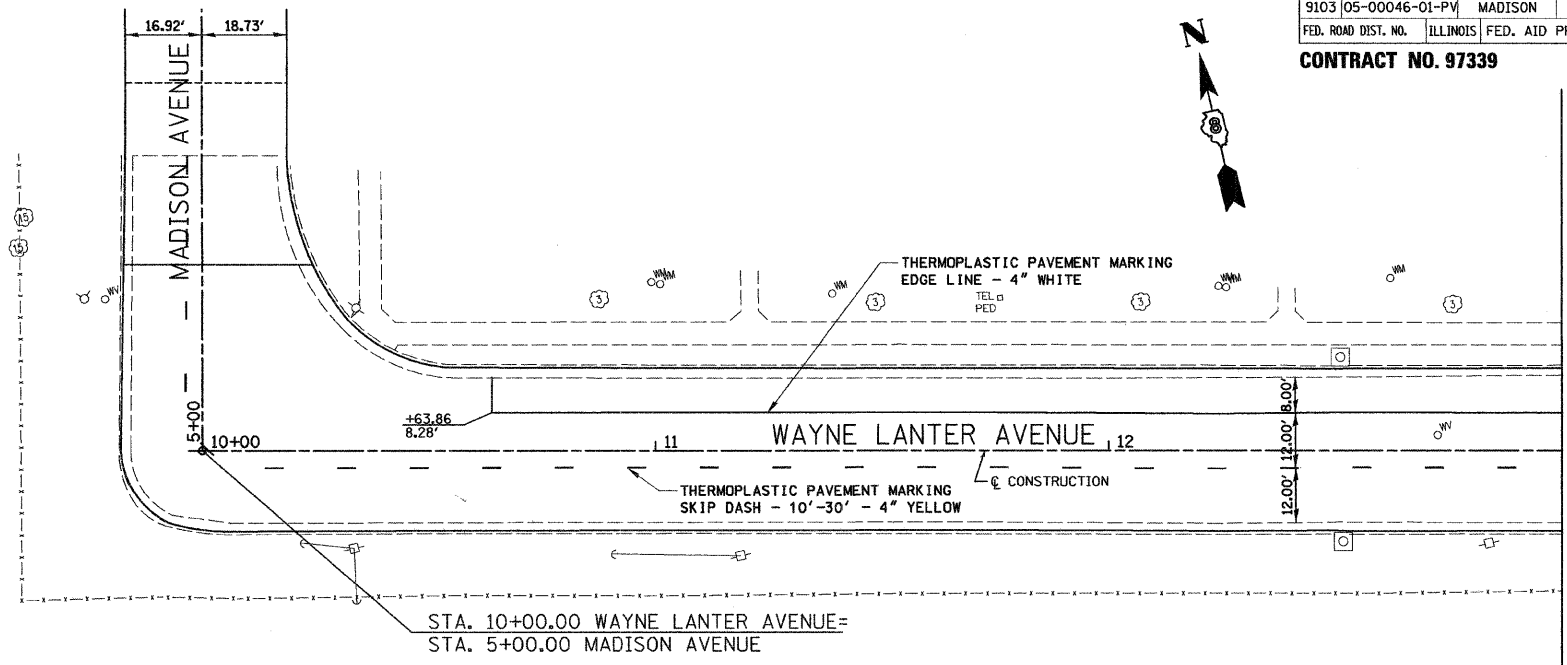
SCALE: 1 Inch = 20 feet		
DSN. BY: BFK	DATE: 02/08/08	SHEET
DWN. BY: JJB	DATE: 02/08/08	20
CHK'D: BFK	DATE: 02/08/08	
DWG. NO.	JOB NO. E071005	DGN. NAME: PLAN07 OF 25 SHTS

FINAL SURVEY	BY	DATE
SURVEYED		
PLOTTED		
TEMPLATE		
NOTE BOOK		
AREAS CHECKED		
NO.		

ORIGINAL SURVEY	BY	DATE
SURVEYED		
PLOTTED		
TEMPLATE		
NOTE BOOK		
AREAS CHECKED		
NO.		

F.A.U. RTE.	SECTION	COUNTY	TOTAL SHEETS	SHEET NO.
9103	05-00046-01-PV	MADISON	25	21
FED. ROAD DIST. NO.	ILLINOIS	FED. AID PROJECT		

CONTRACT NO. 97339



Juneau Associates, Inc. P.C.
CONSULTING ENGINEERS AND LAND SURVEYORS
2100 State Street, P.O. Box 1328
Burlington, Illinois 62909
Phone: (618) 387-1400 / (618) 452-5235
Fax: (618) 452-5941

100 North Research Drive
Edwardsville, Illinois 62025
Phone: (618) 659-0900 / (618) 659-0900
Fax: (618) 659-0941

PAVEMENT MARKINGS
WAYNE LANTER AVENUE
MADISON, ILLINOIS
SECTION 05-00046-01-PV

REVISIONS			
NO.	DATE	BY	REMARKS

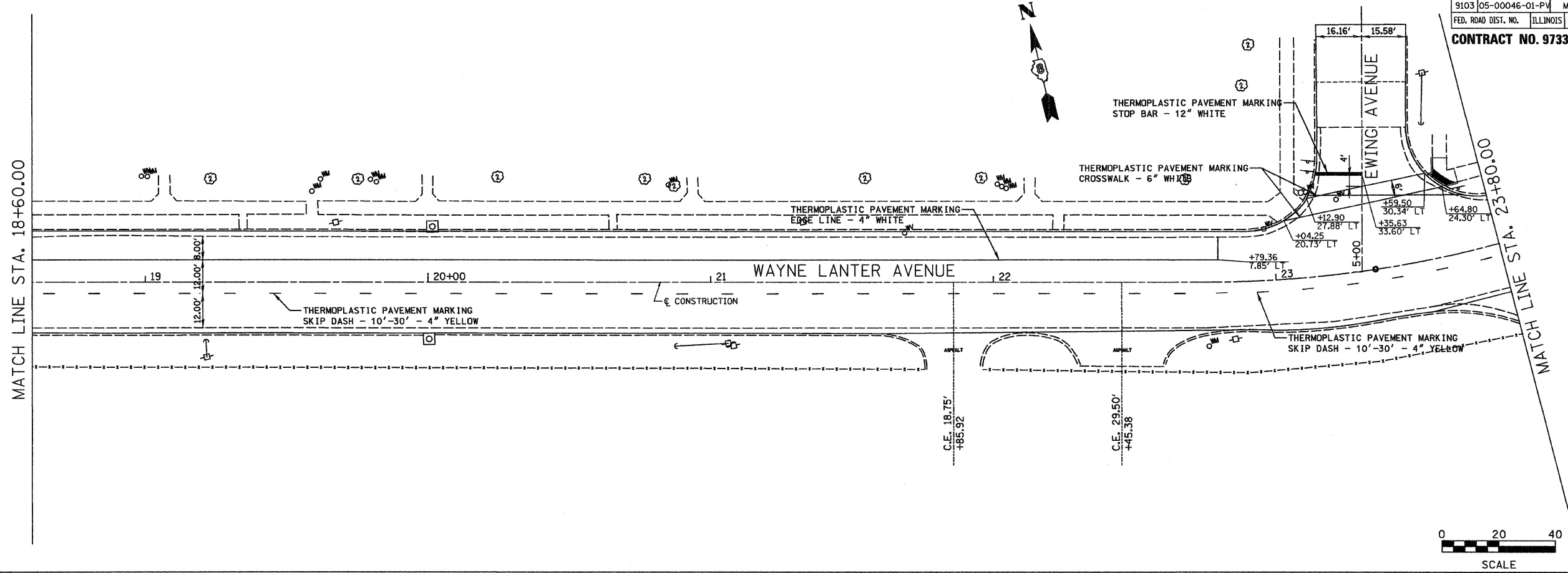
SCALE: 1 inch = 20 feet	
DSN. BY: BFK	DATE: 02/08/08
DWN. BY: JJB	DATE: 02/08/08
CHKD: BFK	DATE: 02/08/08
DWG. NO.	JOB NO. E071005 DGN. NAME: PMARK01 OF 25 SHTS

SHEET
21

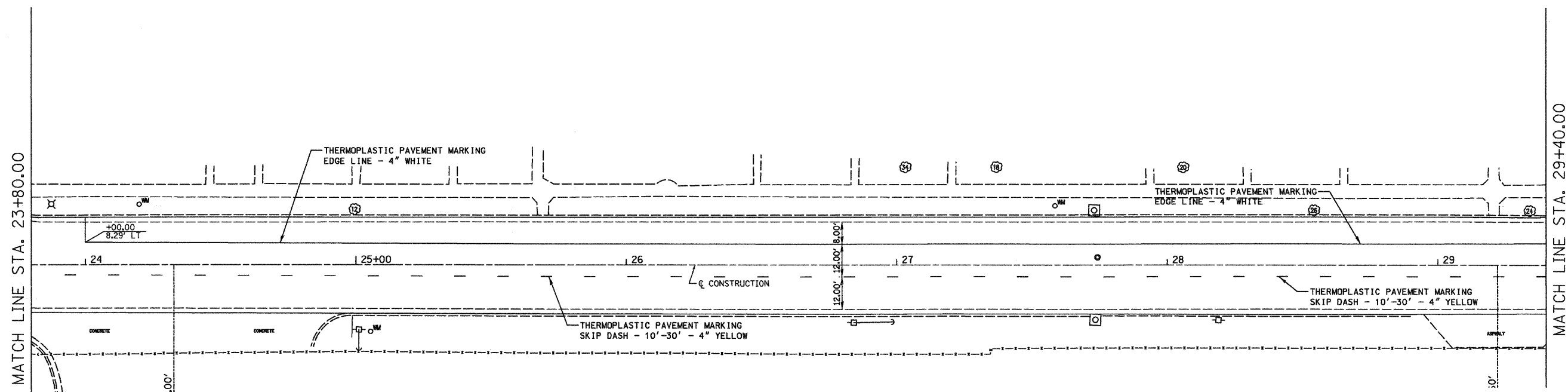
F.A.U. RTE.	SECTION	COUNTY	TOTAL SHEETS	SHEET NO.
9103	05-00046-01-PV	MADISON	25	22
FED. ROAD DIST. NO.	ILLINOIS	FED. AID PROJECT		

CONTRACT NO. 97339

FINAL SURVEY	BY	DATE
SURVEYED		
PLOTTED		
NOTE BOOK		
NO.		
AREAS CHECKED		



ORIGINAL SURVEY	BY	DATE
SURVEYED		
PLOTTED		
NOTE BOOK		
NO.		
AREAS CHECKED		



Juneau Associates, Inc. P.C.
CONSULTING ENGINEERS AND LAND SURVEYORS
2100 State Street, P.O. Box 1325
Granite City, Illinois 62040
Phone: (618) 977-4000 / (618) 452-5533
Fax: (618) 452-5941

PAVEMENT MARKINGS
WAYNE LANTER AVENUE
MADISON, ILLINOIS
SECTION 05-00046-01-PV

REVISIONS			
NO.	DATE	BY	REMARKS

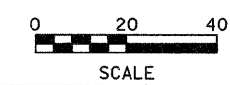
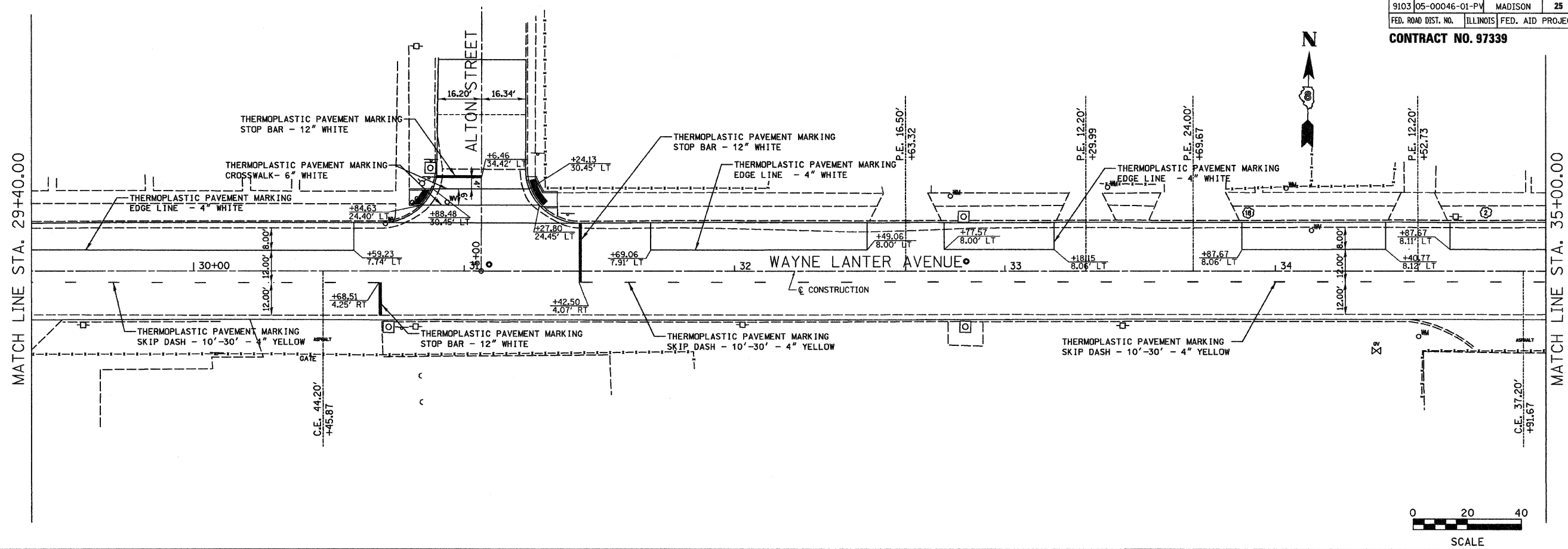
SCALE:	1 inch = 20 feet
DSN. BY:	BFK
DATE:	02/08/08
DWN. BY:	JJB
DATE:	02/08/08
CHKD:	BFK
DATE:	02/08/08
DWG. NO.	E071005
DGN. NAME:	PMARK02
OF	25 SHTS

MATCH LINE STA. 29+40.00

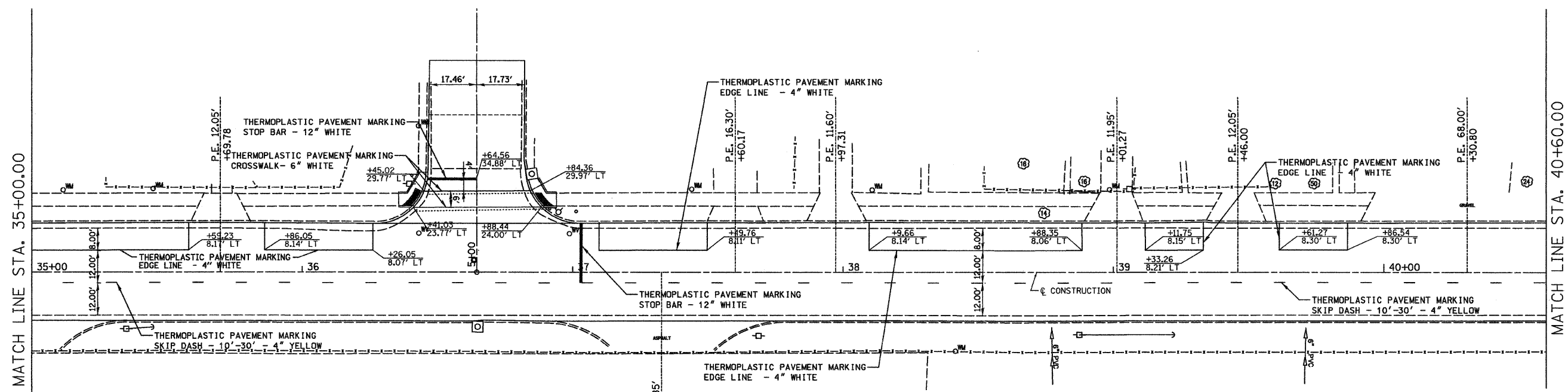
F.A.U. RTE.	SECTION	COUNTY	TOTAL SHEETS	SHEET NO.
9103	05-00046-01-PV	MADISON	25	23
FED. ROAD DIST. NO.		ILLINOIS	FED. AID PROJECT	

CONTRACT NO. 97339

FINAL SURVEY PLOTTED	BY	DATE
NOTE BOOK		
AREAS CHECKED		



ORIGINAL SURVEY PLOTTED	BY	DATE
NOTE BOOK		
AREAS CHECKED		



Juneau Associates, Inc. P.C.
 CONSULTING ENGINEERS AND LAND SURVEYORS
 2100 State Street, P.O. Box 1325
 Granite City, Illinois 62040
 Phone: (618) 887-4400 / (618) 882-6533
 Fax: (618) 452-2941

PAVEMENT MARKINGS
WAYNE LANTER AVENUE
MADISON, ILLINOIS
SECTION 05-00046-01-PV

REVISIONS			
NO.	DATE	BY	REMARKS

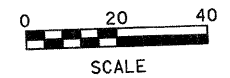
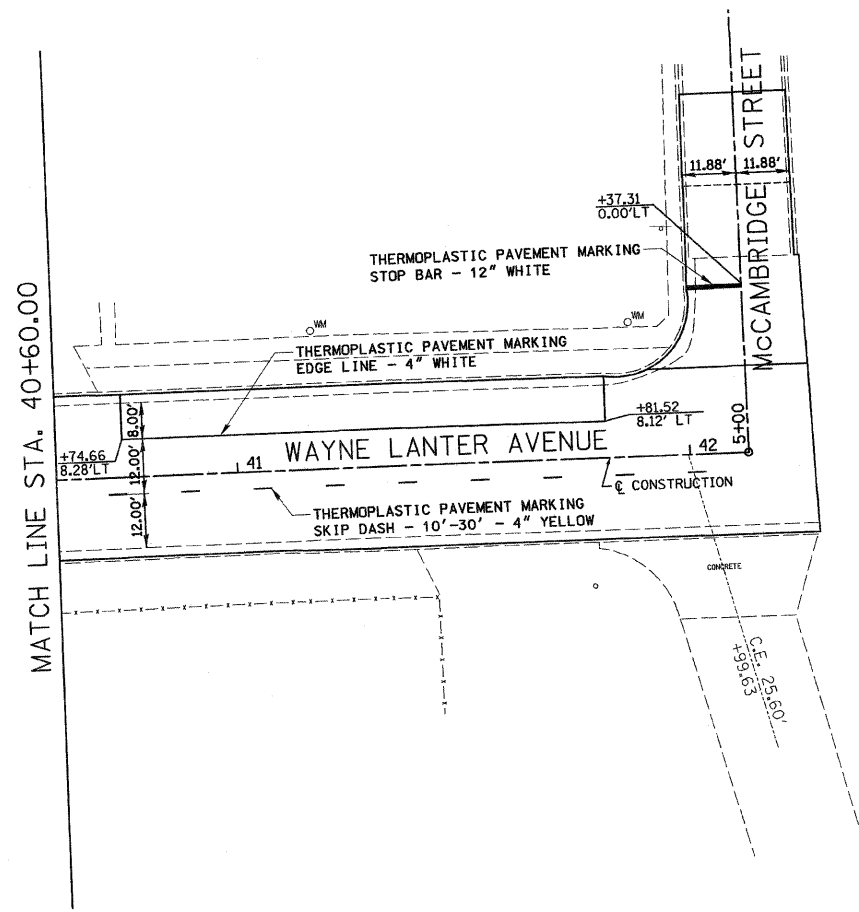
SCALE:		SHEET 23
1 inch = 20 feet		
DSN. BY:	BFK DATE: 02/08/08	
DWN. BY:	JJB DATE: 02/08/08	
CHKD:	BFK DATE: 02/08/08	OF 25 SHTS
DWG. NO.	JOB NO. E071005 DGN. NAME: PMARK03	

F.A.U. RTE.	SECTION	COUNTY	TOTAL SHEETS	SHEET NO.
9103	05-00046-01-PV	MADISON	25	24
FED. ROAD DIST. NO.	ILLINOIS FED. AID PROJECT			

CONTRACT NO. 97339



FINAL SURVEY	SURVEYED	BY	DATE
SURVEY PLOTTED	TEMP. DATE		
NOTE BOOK NO.	AREAS CHECKED		



ORIGINAL SURVEY	SURVEYED	BY	DATE
SURVEY PLOTTED	TEMP. DATE		
NOTE BOOK NO.	AREAS CHECKED		

Juneau Associates, Inc. P.C.
CONSULTING ENGINEERS AND LAND SURVEYORS
2100 State Street, P.O. Box 1325 Granite City, Illinois 62040
Phone: (618) 987-4400 / (618) 982-5555 Fax: (618) 982-0541
100 North Research Drive, Lombard, Illinois 60148
Phone: (618) 959-0000 / (618) 959-0800 Fax: (618) 959-0941

PAVEMENT MARKINGS
WAYNE LANTER AVENUE
MADISON, ILLINOIS
SECTION 05-00046-01-PV

REVISIONS			
NO.	DATE	BY	REMARKS

SCALE: 1 Inch = 20 feet			
DSN. BY:	BFK	DATE:	02/08/08
DWN. BY:	JJB	DATE:	02/08/08
CHK'D:	BFK	DATE:	02/08/08
JOB NO.	E071005	DGN. NAME:	PMARK04 OF 25 SHTS

SHEET 24

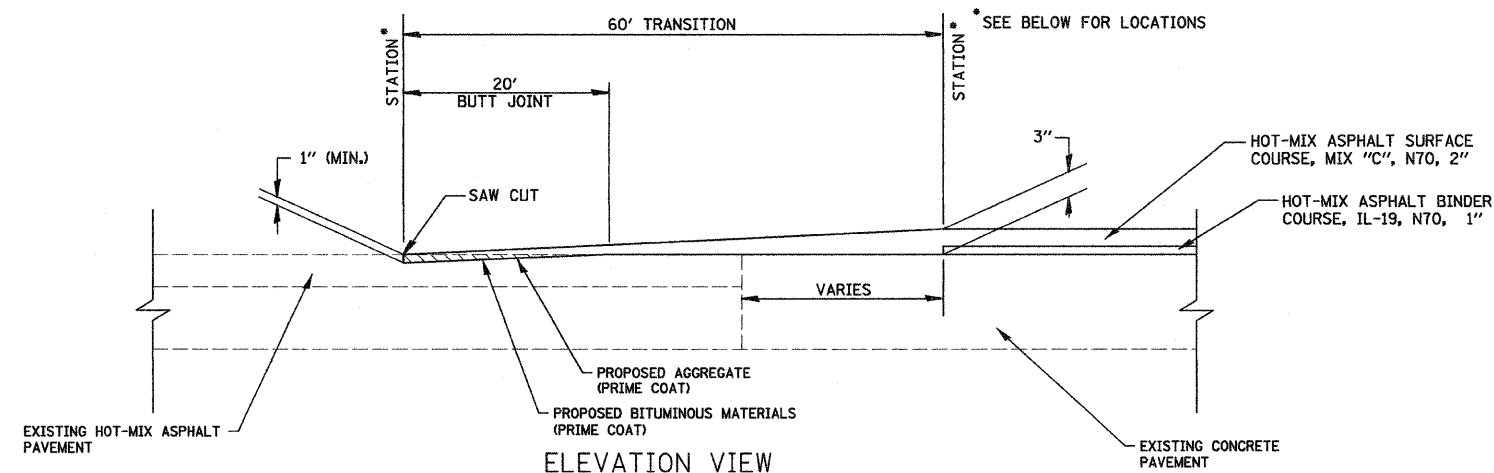
DWG. NO.

F.A.U. RTE.	SECTION	COUNTY	TOTAL SHEETS	SHEET NO.
9103	05-00046-01-PV	MADISON	25	25
FED. ROAD DIST. NO.	ILLINOIS	FED. AID PROJECT		

CONTRACT NO. 97339

FINAL SURVEY	SURVEYED	BY	DATE
NOTE BOOK NO.	PLOTTED		
	TEMPLATE		
	AREAS CHECKED		

ORIGINAL SURVEY	SURVEYED	BY	DATE
NOTE BOOK NO.	PLOTTED		
	TEMPLATE		
	AREAS CHECKED		



ELEVATION VIEW

BUTT JOINT DETAIL

MADISON AVENUE
STA. 5+41.10 TO STA. 6+01.10

WASHINGTON AVENUE
STA. 5+65.80 TO STA. 6+25.82
STA. 6+74.15 TO STA. 7+34.15

EWING AVENUE
STA. 5+27.18 TO STA. 5+87.18

ALTON STREET
STA. 5+17.85 TO STA. 5+77.85

HIGHLAND STREET
STA. 5+18.02 TO STA. 5+78.02

McCAMBRIDGE STREET
STA. 5+19.13 TO STA. 5+79.13

<p>Juneau Associates, Inc. P.C. CONSULTING ENGINEERS AND LAND SURVEYORS</p> <p>2100 State Street, P.O. Box 1325 Granite City, Illinois 62040 Phone: (618) 357-4000 FAX: (618) 357-9375 FAX: (618) 357-9341</p> <p>100 North Research Drive Edwardsville, Illinois 62025 Phone: (618) 399-0900 FAX: (618) 399-0941</p>		<p>MISCELLANEOUS DETAILS</p> <p>WAYNE LANIER AVENUE MADISON, ILLINOIS SECTION 05-00046-01-PV</p>																																
<p>REVISIONS</p> <table border="1"> <thead> <tr> <th>NO.</th> <th>DATE</th> <th>BY</th> <th>REMARKS</th> </tr> </thead> <tbody> <tr> <td> </td> <td> </td> <td> </td> <td> </td> </tr> <tr> <td> </td> <td> </td> <td> </td> <td> </td> </tr> <tr> <td> </td> <td> </td> <td> </td> <td> </td> </tr> </tbody> </table>		NO.	DATE	BY	REMARKS													<p>SCALE: N.T.S.</p> <table border="1"> <tr> <td>DSN. BY:</td> <td>BFK</td> <td>DATE:</td> <td>02/08/08</td> <td>SHEET</td> </tr> <tr> <td>DWN. BY:</td> <td>JJB</td> <td>DATE:</td> <td>02/08/08</td> <td>25</td> </tr> <tr> <td>CHK'D:</td> <td>BFK</td> <td>DATE:</td> <td>02/08/08</td> <td></td> </tr> </table>		DSN. BY:	BFK	DATE:	02/08/08	SHEET	DWN. BY:	JJB	DATE:	02/08/08	25	CHK'D:	BFK	DATE:	02/08/08	
NO.	DATE	BY	REMARKS																															
DSN. BY:	BFK	DATE:	02/08/08	SHEET																														
DWN. BY:	JJB	DATE:	02/08/08	25																														
CHK'D:	BFK	DATE:	02/08/08																															
<p>DWG. NO.</p>		<p>JOB NO. E071005 DGN. NAME: MISC.DTLS OF 25 SHTS</p>																																