

TR	SECTION	COUNTY	TOTAL SHEETS	SHEET NO.
71	07-01114-00-BR	WHITE	13	2
FED. ROAD DIST. NO. 9 ILLINOIS		LIMEKILN CREEK		
PROJECT * BROS-193134		CONTRACT * 99321		
LEC JOB * H071011WH				

323 W. 3RD ST.
P.O. BOX 160
MT. CARMEL, IL
62863
PHONE:
(618)-262-8661
(618)-263-3327

405 W. STATE ST
SUITE 1
PRINCETON, IN
47670
PHONE:
(812)-386-7611
FAX:
(812)-386-2812



PROFESSIONAL DESIGN FIRM
LAND SURVEY & PROFESSIONAL ENGINEERING CORPORATION
184-00087
(62-032435)(35-002769)

AARON M. MEFFORD
REGISTERED PROFESSIONAL ENGINEER OF ILLINOIS
56284

AARON M. MEFFORD
NAME
Aaron Mefford
SIGNATURE
1-14-08
DATE
11-30-09
EXPIRES

TOWNSHIP ROUTE 71
OVER LIMEKILN CREEK
WHITE COUNTY, ILLINOIS

SHEET TITLE:
PLAN & PROFILE

SCALE:	VARIES
BY:	AMM
DATE:	12/07
REV:	

2 OF 13 SHEETS

SHEET NO.
2

GENERAL NOTES:

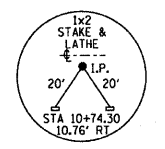
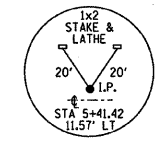
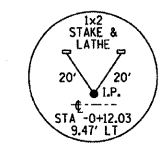
THIS SECTION SHALL BE CONSTRUCTED IN ACCORDANCE WITH THE PLANS, SPECIAL PROVISIONS AND "STANDARD SPECIFICATIONS FOR ROAD AND BRIDGE CONSTRUCTION", ADOPTED JANUARY 1, 2007.

THE WORK INVOLVED ON THIS SECTION CONSISTS OF THE REMOVAL OF THE EXISTING STRUCTURE, THE CONSTRUCTION OF A 60 FOOT LONG SINGLE SPAN PRECAST, PRESTRESSED CONCRETE DECK BEAM BRIDGE, EARTH APPROACHES, AGGREGATE SURFACE COURSE AND OTHER MISCELLANEOUS ITEMS NECESSARY TO COMPLETE THIS SECTION.

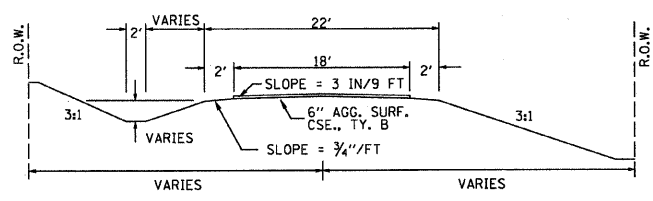
ALL ELEVATIONS ARE BASED ON U.S.G.S. MEAN SEA LEVEL DATUM.

IT SHALL BE THE CONTRACTOR'S RESPONSIBILITY TO CONTACT ALL THE UTILITIES, AFFECTING THE PROJECT, PRIOR TO CONSTRUCTION.

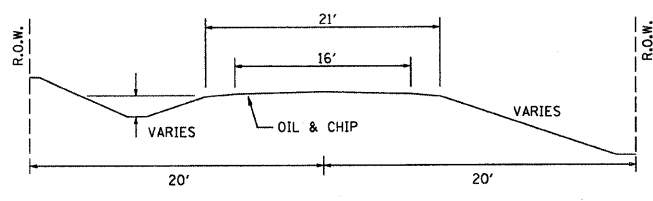
NOTE: CONSTRUCTION TRANSITIONS
STA. 2+00 TO STA 2+50
STA 7+50 TO STA 8+00
ALL QUANTITIES ARE INCLUDED IN THE PROPOSAL



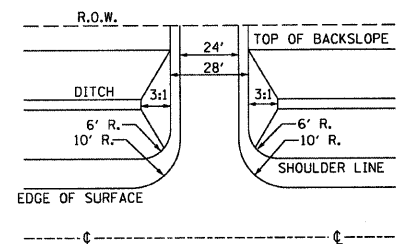
TYPICAL CROSS SECTION PROPOSED



TYPICAL CROSS SECTION EXISTING



FIELD ENTRANCE DETAIL



NOTE: CONSTRUCT SPECIAL DITCH

- STA 2+00 TO STA 4+84 RT
- STA 3+00 TO STA 4+60 LT
- STA 5+20 TO STA 7+50 RT
- STA 5+06 TO STA 6+00 LT

NOTE: CONSTRUCT STONE RIPRAP DITCH

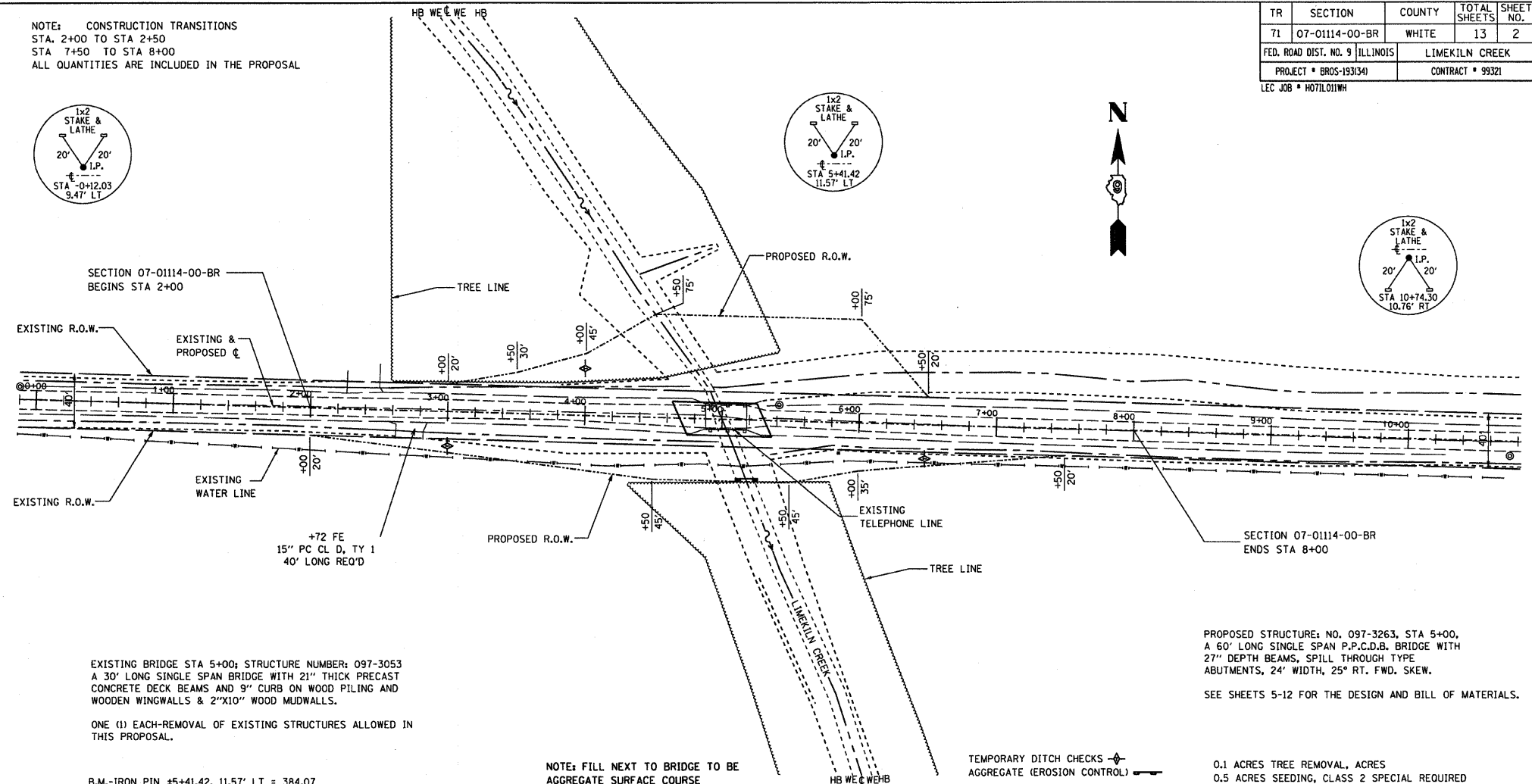
- STA 4+50 TO STA 4+84 RT (0.62 TON/LIN FT)
- STA 4+50 TO STA 4+60 LT (0.62 TON/LIN FT)
- STA 5+20 TO STA 5+50 RT (0.62 TON/LIN FT)
- STA 5+06 TO STA 6+00 LT (0.62 TON/LIN FT)
- 105 TON STONE RIPRAP DITCH ALLOWED IN PROPOSAL.

SEE SHEET NO. 13 FOR STONE RIPRAP DITCH DETAIL.

UTILITIES:
J.U.L.I.E. 1-800-892-0123

BROWNSVILLE WATER
1-618-265-3820

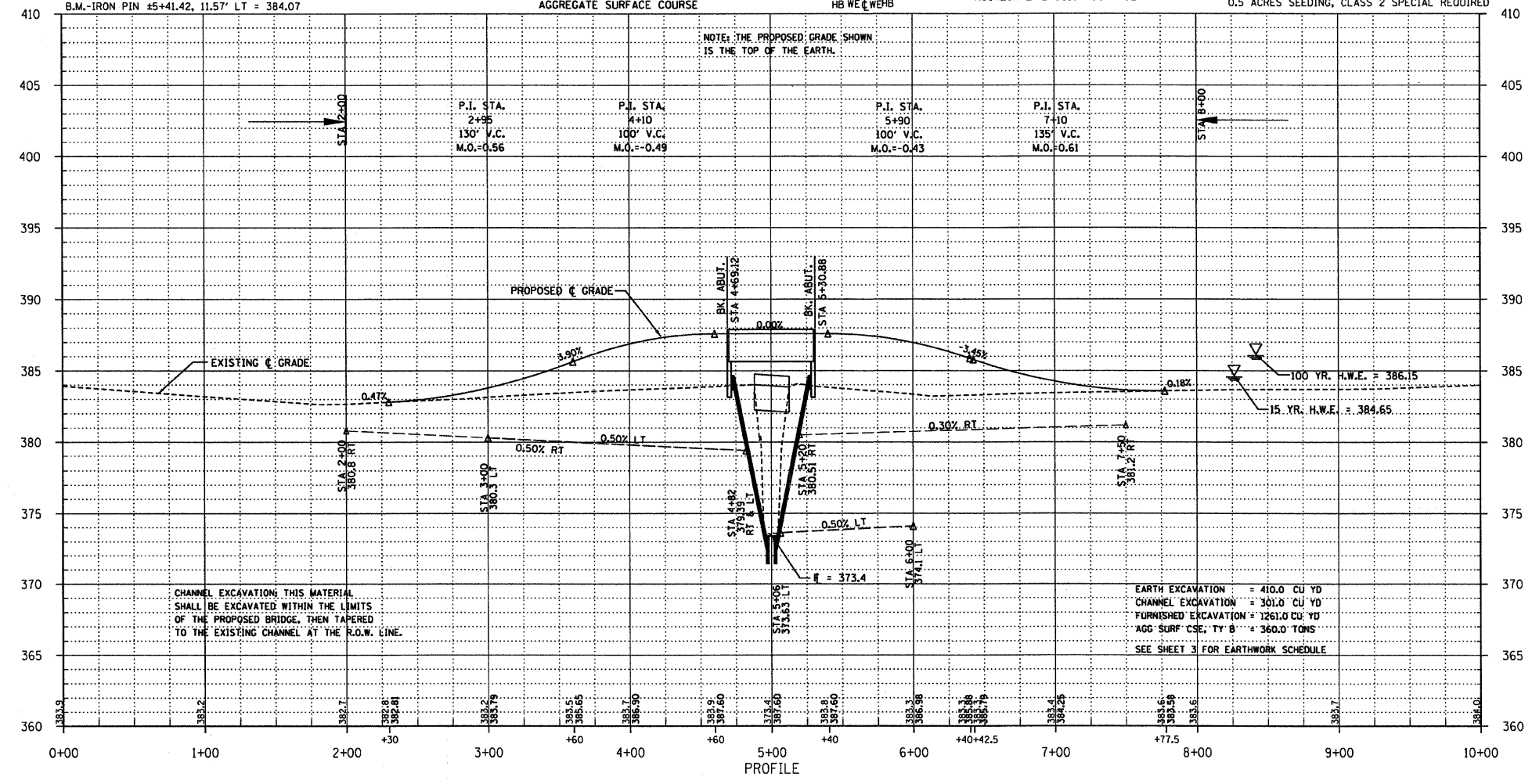
VERIZON
1-618-395-6189



EXISTING BRIDGE STA 5+00; STRUCTURE NUMBER: 097-3053
A 30' LONG SINGLE SPAN BRIDGE WITH 21" THICK PRECAST CONCRETE DECK BEAMS AND 9" CURB ON WOOD PILING AND WOODEN WINGWALLS & 2"x10" WOOD MUDWALLS.

ONE (1) EACH-REMOVAL OF EXISTING STRUCTURES ALLOWED IN THIS PROPOSAL.

NOTE: FILL NEXT TO BRIDGE TO BE AGGREGATE SURFACE COURSE
TEMPORARY DITCH CHECKS -
AGGREGATE (EROSION CONTROL) -
0.1 ACRES TREE REMOVAL, ACRES
0.5 ACRES SEEDING, CLASS 2 SPECIAL REQUIRED



CHANNEL EXCAVATION THIS MATERIAL SHALL BE EXCAVATED WITHIN THE LIMITS OF THE PROPOSED BRIDGE, THEN TAPERED TO THE EXISTING CHANNEL AT THE R.O.W. LINE.

EARTH EXCAVATION = 410.0 CU YD
CHANNEL EXCAVATION = 301.0 CU YD
FURNISHED EXCAVATION = 1261.0 CU YD
AGG SURF CSE, TY B = 360.0 TONS
SEE SHEET 3 FOR EARTHWORK SCHEDULE