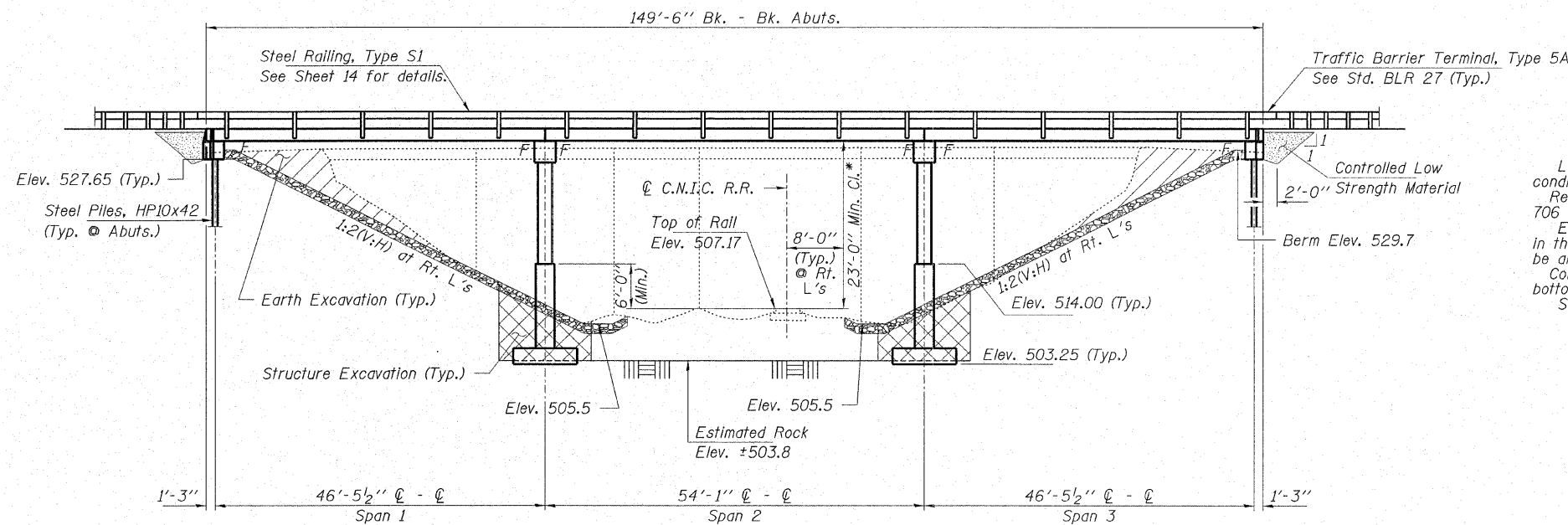


ROUTE NO.	SECTION	COUNTY	TOTAL SHEETS	SHEET NO.
T.R. 505B	06-10118-00-BR	JEFFERSON	18	11
FED. ROAD DIST. NO.		ILLINOIS	CONTRACT NO. 99325	



GENERAL NOTES

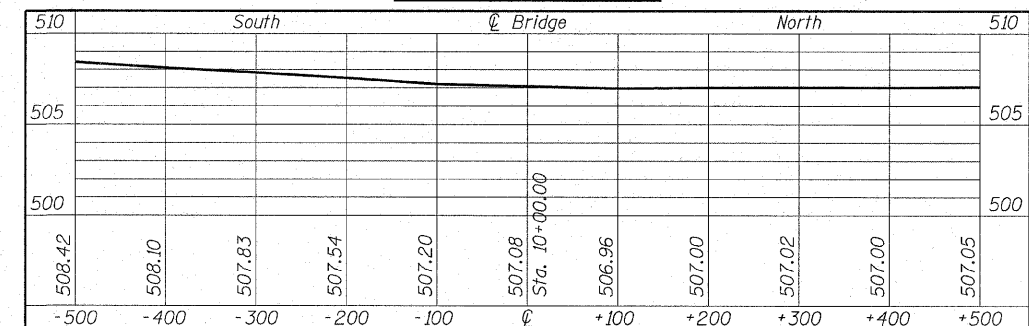
Layout of riprap may be varied in the field to suit ground conditions as directed by the Engineer.
 Reinforcement bars shall conform to the requirements of ASTM A 706 Gr 60 (IL Modified). See Special Provisions.
 Excavation required to construct the Abutments shall be included in the cost of Concrete Structures. No additional compensation will be allowed for Structure Excavation.
 Contractor shall provide 1 1/2 : 1 maximum excavated slope from bottom of the pier footing to the existing ground surface.
 See Sheet 18 for Borings.

C.N.I.C. RAILROAD
 BUILT 200_ BY
 JEFFERSON COUNTY
 SEC. 06-10118-00-BR
 STR. NO. 041-9930
 LOADING HS 20

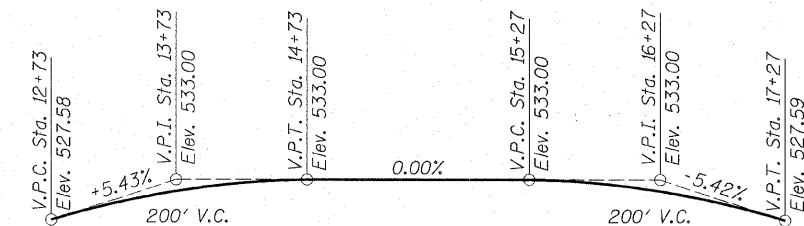
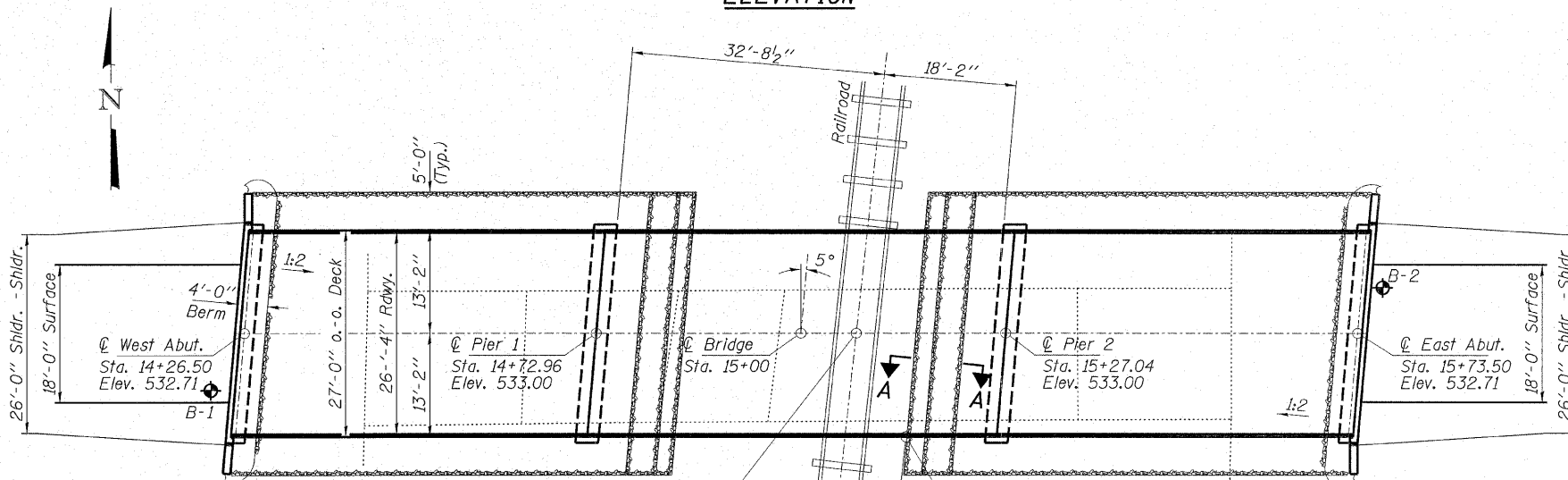
NAME PLATE

See Std. 515001
 See Sheet 15 for location.

HIGH RAIL PROFILE



ELEVATION



PROFILE GRADE

DESIGN SPECIFICATIONS

2002 AASHTO

DESIGN STRESSES

FIELD UNITS

f'c = 3,500 psi
 fy = 60,000 psi (Reinf.)

PRECAST PRESTRESSED UNITS

SPAN 1 & 3 BEAMS

f'c = 5,000 psi
 f'ci = 4,000 psi

SPAN 2 BEAMS

f'c = 6,000 psi
 f'ci = 5,000 psi

f's = 270,000 psi (1/2 "φ low lax. strands)

f'si = 201,960 psi (1/2 "φ low lax. strands)

fy = 60,000 psi (Reinf.)

LOADING HS 20-44

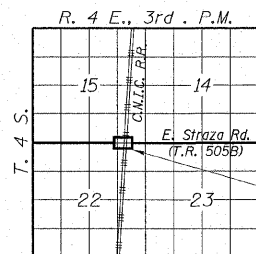
Allow 25#/Sq. Ft. for future wearing surface.

SEISMIC DATA

Seismic Performance Category (SPC) = B
 Bedrock Acceleration Coefficient (A) = 0.10g
 Site Coefficient (S) = 1.0

Sta. 15+07.30 (T.R. 505B)
 Sta. 100+00 (C.N.I.C. R.R.)
 M.P. 51.9

PLAN



LOCATION SKETCH

SECTION A-A

I certify that to the best of my knowledge, information and belief, this bridge design is structurally adequate for the design loading shown on the plans. The design is an economical one for the style of structure and complies with requirements of the current "AASHTO Standard Specifications for Highway Bridges".

Steven W. Magnuson 1/9/08
 ILLINOIS STRUCTURAL NO. 081-6064



Expires 11-30-08

TOTAL BILL OF MATERIAL

ITEM	UNIT	SUPER	SUB	TOTAL
Rock Excavation	Cu. Yd.		10.0	10.0
Stone Dumped Riprap, Class A4	Ton			390
Structure Excavation	Cu. Yd.		124	124
Concrete Structures	Cu. Yd.		147.0	147.0
Concrete Encasement	Cu. Yd.		2.8	2.8
Precast Prestressed Concrete Deck Beams (21" Depth)	Sq. Ft.	3,996		3,996
Reinforcement Bars	Pound		32,510	32,510
Steel Railing, Type S1	Foot	305		305
Steel Piles HP10x42	Foot		176	176
Name Plates	Each		1	1
Controlled Low-Strength Material	Cu. Yd.		35	35
Mechanical Splice	Each		192	192

HAMPTON, LENZINI & RENWICK, INC.
 CIVIL & STRUCTURAL ENGINEERS
 LAND SURVEYORS
 3085 STEVENSON DRIVE, SUITE 201
 SPRINGFIELD, ILLINOIS 62703
 (217) 546-3400

ELGIN • SPRINGFIELD

PROJECT NUMBER: 12-49-0008-1 DATE: 01/08/08
 DESIGNED: R.J.P. CHECKED: M.D.C. DRAWN: D.T.M.

GENERAL PLAN AND ELEVATION

T.R. 505B OVER C.N.I.C. RAILROAD
 SECTION 06-10118-00-BR
 MOORES PRAIRIE ROAD DISTRICT
 JEFFERSON COUNTY
 STRUCTURE NO. 041-9930 / STATION 15+00