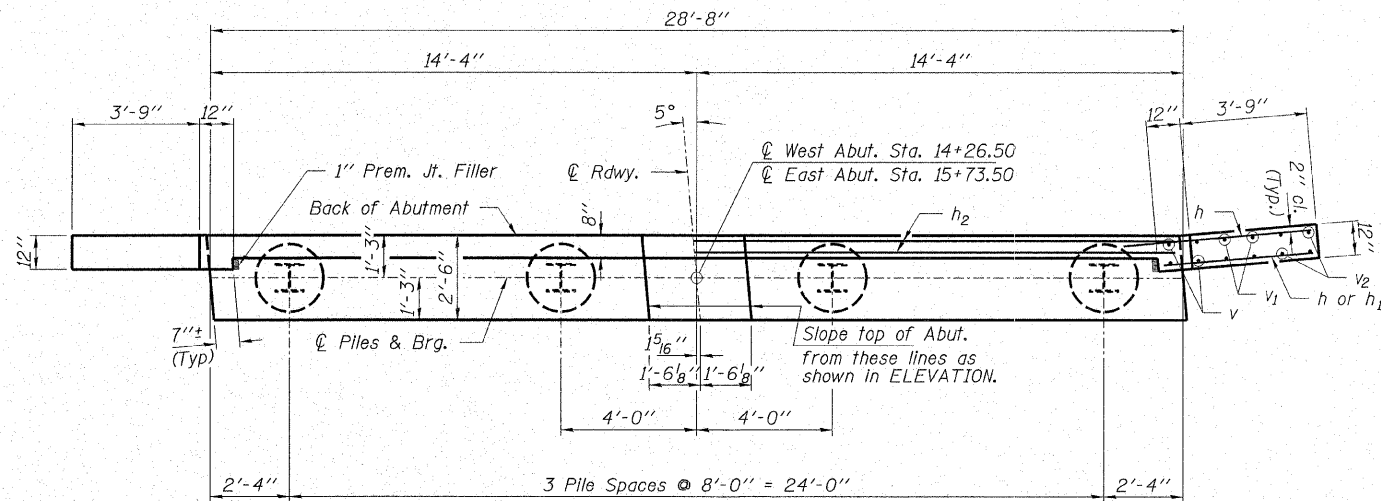
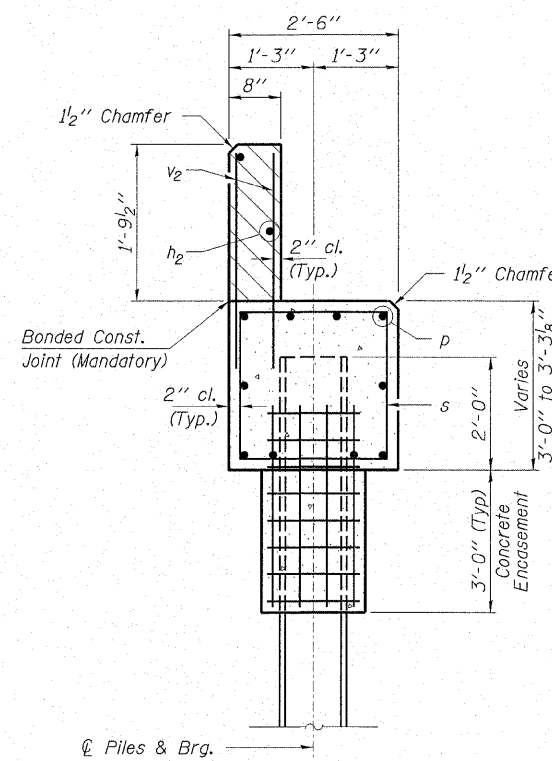


|                           |                               |                     |                    |                 |
|---------------------------|-------------------------------|---------------------|--------------------|-----------------|
| ROUTE NO.<br>T.R.<br>505B | SECTION<br>06-10118<br>-00-BR | COUNTY<br>JEFFERSON | TOTAL SHEETS<br>18 | SHEET NO.<br>15 |
| FED. ROAD DIST. NO.       |                               | ILLINOIS            | CONTRACT NO. 99325 |                 |

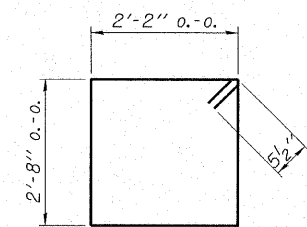


PLAN

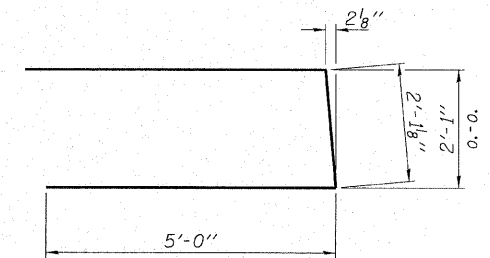


SECTION A-A

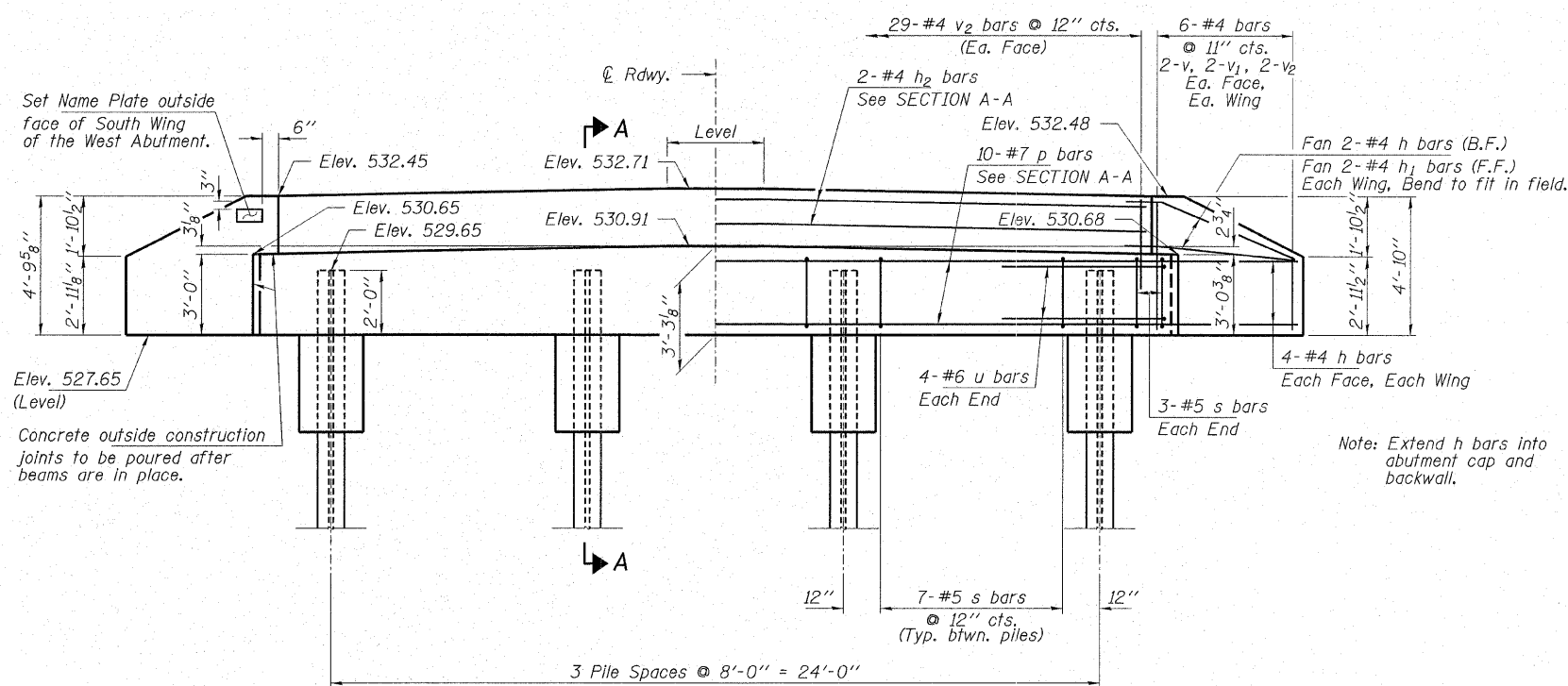
Hatched area to be poured after beams are in place.



BAR s



BAR u



ELEVATION

PILE DATA

Type.....Steel HP10x42  
 No. Req'd. (2 Abuts.).....8  
 Allowable Resistance Available.....112 Kips/Pile  
 Nominal Req'd Bearing.....336 Kips/Pile  
 Est. Length.....22 Ft/Pile

Notes: The Steel H-Piles shall be according to AASHTO M270 Grade 50.  
 See Sheet 17 for pile and pile encasement details.

BILL OF MATERIAL - 2 ABUTS.

| BAR                 | NO. | SIZE | LENGTH  | SHAPE |
|---------------------|-----|------|---------|-------|
| h                   | 40  | #4   | 6'-0"   | —     |
| h1                  | 8   | #4   | 4'-6"   | —     |
| h2                  | 4   | #4   | 28'-4"  | —     |
| p                   | 20  | #7   | 28'-4"  | —     |
| s                   | 54  | #5   | 10'-7"  | □     |
| u                   | 16  | #6   | 12'-2"  | U     |
| v                   | 16  | #4   | 4'-6"   | —     |
| v1                  | 16  | #4   | 3'-7"   | —     |
| v2                  | 132 | #4   | 2'-8"   | —     |
| Concrete Structures |     |      | Cu. Yd. | 21.8  |
| Concrete Encasement |     |      | Cu. Yd. | 2.8   |
| Reinforcement Bars  |     |      | Pound   | 2,630 |
| Steel Piles HP10x42 |     |      | Foot    | 176   |
| Name Plates         |     |      | Each    | 1     |

**HAMPTON, LENZINI & RENWICK, INC.**  
 CIVIL & STRUCTURAL ENGINEERS  
 LAND SURVEYORS

3085 STEVENSON DRIVE, SUITE 201  
 SPRINGFIELD, ILLINOIS 62703  
 (217) 546-3400

ELGIN • SPRINGFIELD

PROJECT NUMBER: 12-49-0008-1    DATE: 01/08/08  
 DESIGNED: R.J.P.    CHECKED: M.D.C.    DRAWN: D.T.M.

ABUTMENTS  
 T.R. 505B OVER C.N./I.C. RAILROAD  
 SECTION 06-10118-00-BR  
 MOORES PRAIRIE ROAD DISTRICT  
 JEFFERSON COUNTY  
 STRUCTURE NO. 041-9930 / STATION 15+00