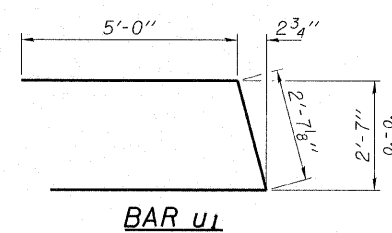
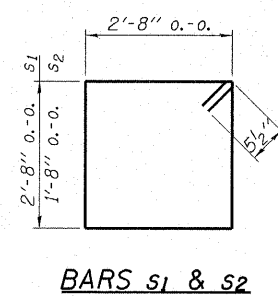
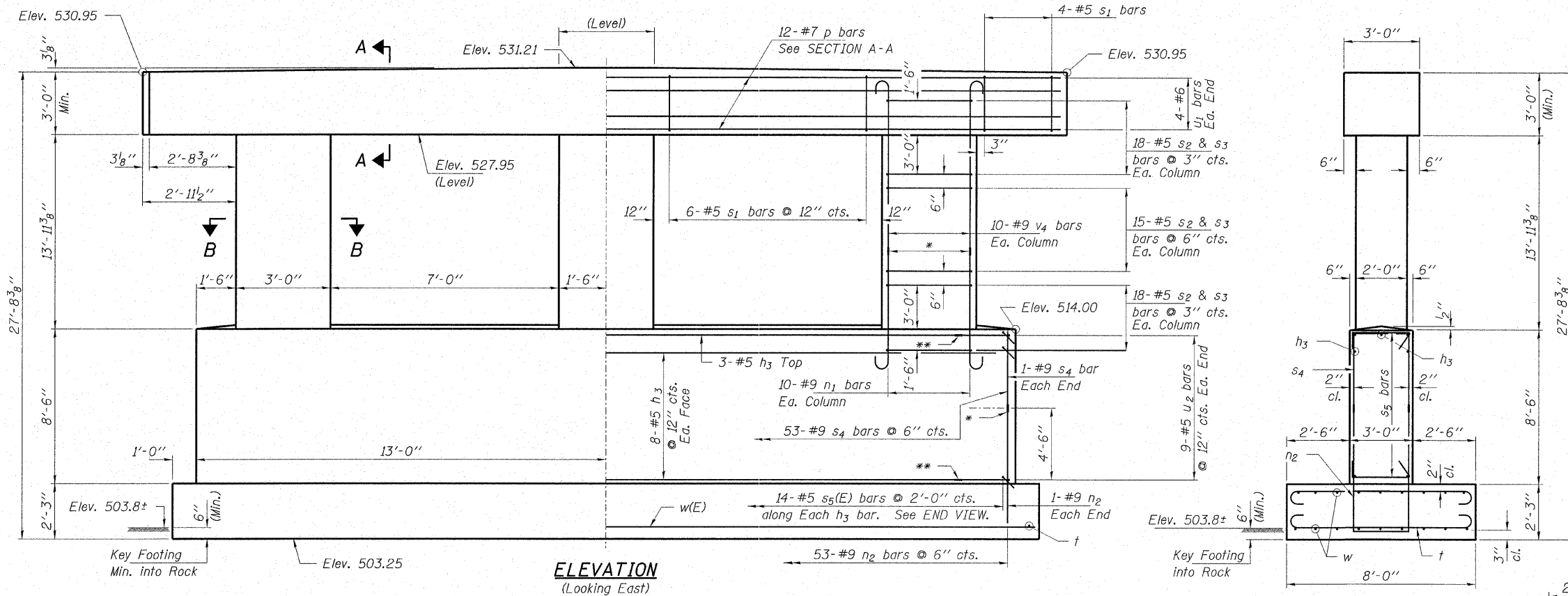
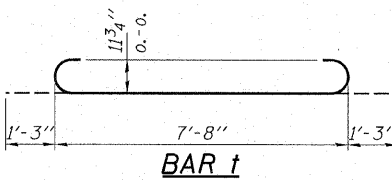
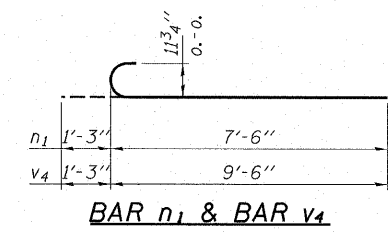
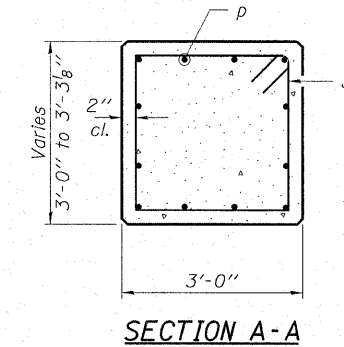
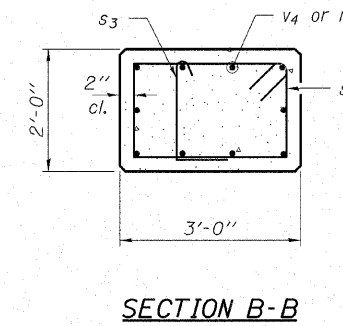
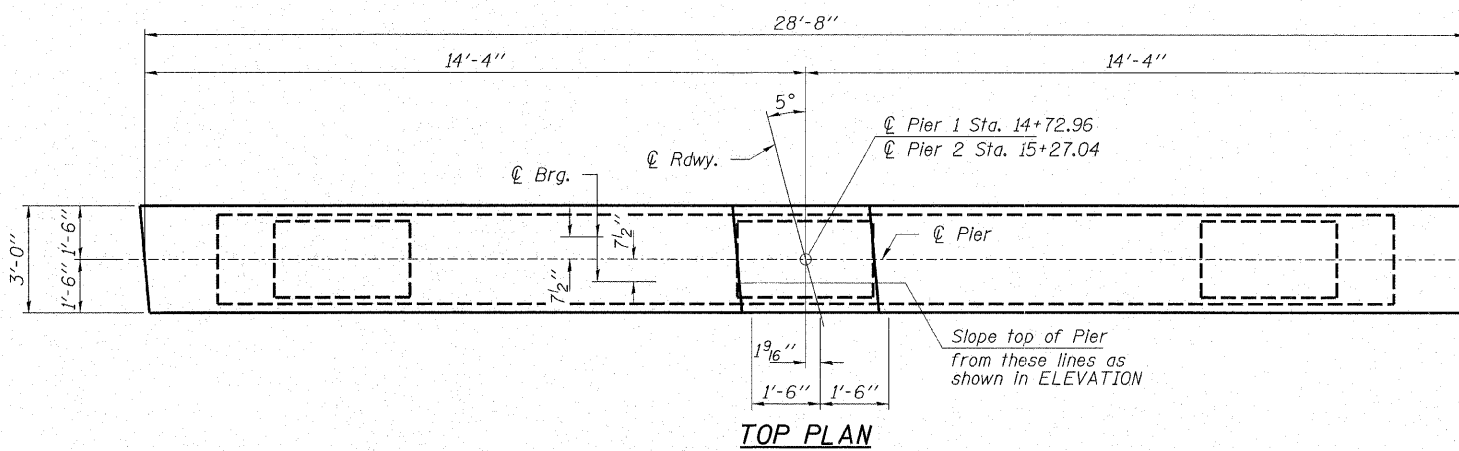


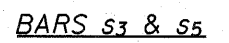
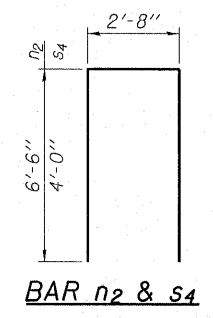
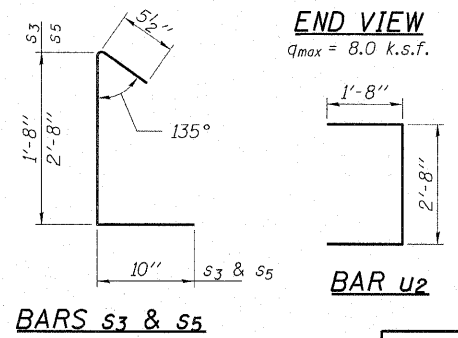
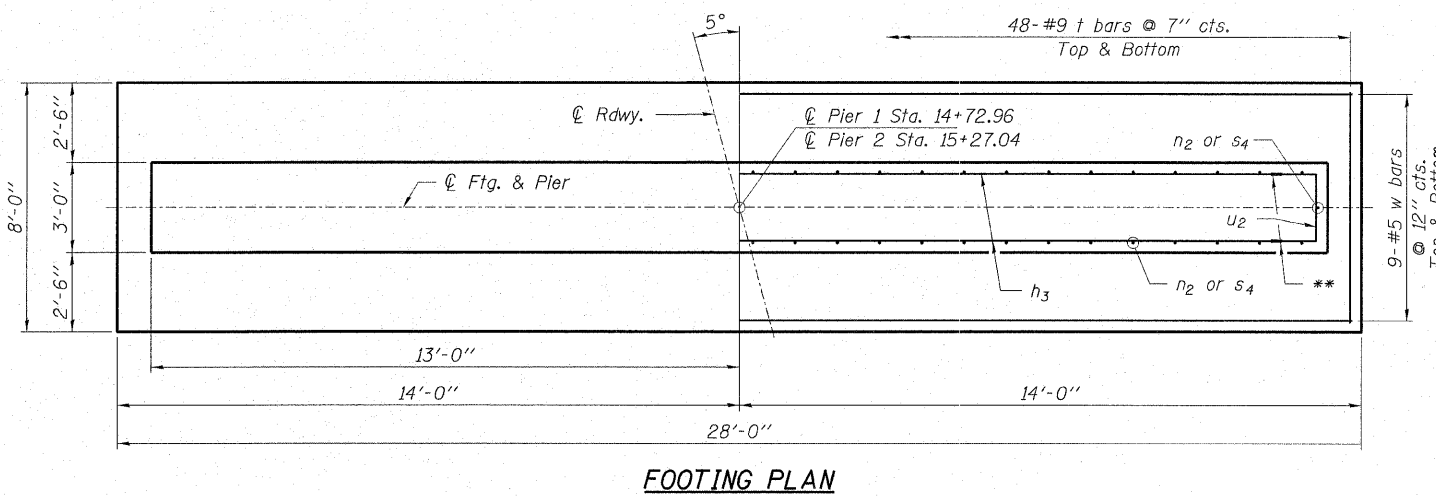
ROUTE NO. T.R. 505B	SECTION 06-10118 -00-BR	COUNTY JEFFERSON	TOTAL SHEETS 18	SHEET NO. 16
FED. ROAD DIST. NO.		ILLINOIS CONTRACT NO. 99325		



Notes:
 Space reinforcement in cap to miss dowel rods.
 All edges shall have standard 3/4" chamfer except as noted.

BILL OF MATERIAL - 2 PIERS

BAR	NO.	SIZE	LENGTH	SHAPE
h3	38	#5	23'-0"	—
n1	60	#9	8'-9"	⌋
n2	110	#9	15'-8"	⌋
p	24	#7	28'-4"	—
s1	40	#5	11'-7"	□
s2	306	#5	9'-7"	□
s3	306	#5	3'-0"	□
s4	110	#9	10'-8"	⌋
s5	252	#5	4'-0"	⌋
t	192	#9	10'-2"	⌋
u1	16	#6	12'-8"	⌋
u2	36	#5	6'-0"	⌋
v4	60	#9	10'-9"	⌋
w	36	#5	27'-8"	—
Concrete Structures			Cu. Yd.	125.2
Reinforcement Bars			Pound	29,880
Rock Excavation			Cu. Yd.	10.0
Structure Excavation			Cu. Yd.	124
Mechanical Splice			Each	192



* Mechanical Splice
 ** Mechanical Splice, shop welded splice per AWS D1.4 or standard 90° bends.

HAMPTON, LENZINI & RENWICK, INC.
 CIVIL & STRUCTURAL ENGINEERS
 LAND SURVEYORS
 3085 STEVENSON DRIVE, SUITE 201
 SPRINGFIELD, ILLINOIS 62703
 (217) 546-3400

ELGIN • SPRINGFIELD

PROJECT NUMBER: 12-49-0008-1 DATE: 01/08/08
 DESIGNED: R.J.P. CHECKED: M.D.C. DRAWN: D.T.M.

PIERS
 T.R. 505B OVER C.N./I.C. RAILROAD
 SECTION 06-10118-00-BR
 MOORES PRAIRIE ROAD DISTRICT
 JEFFERSON COUNTY
 STRUCTURE NO. 041-9930 / STATION 15+00