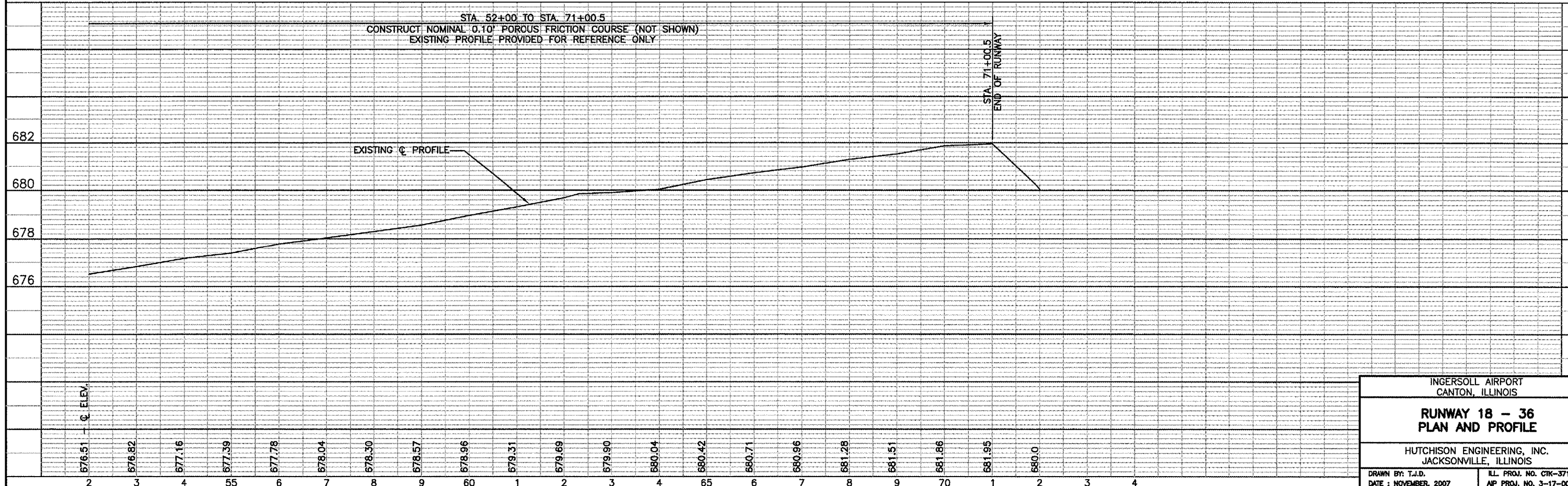
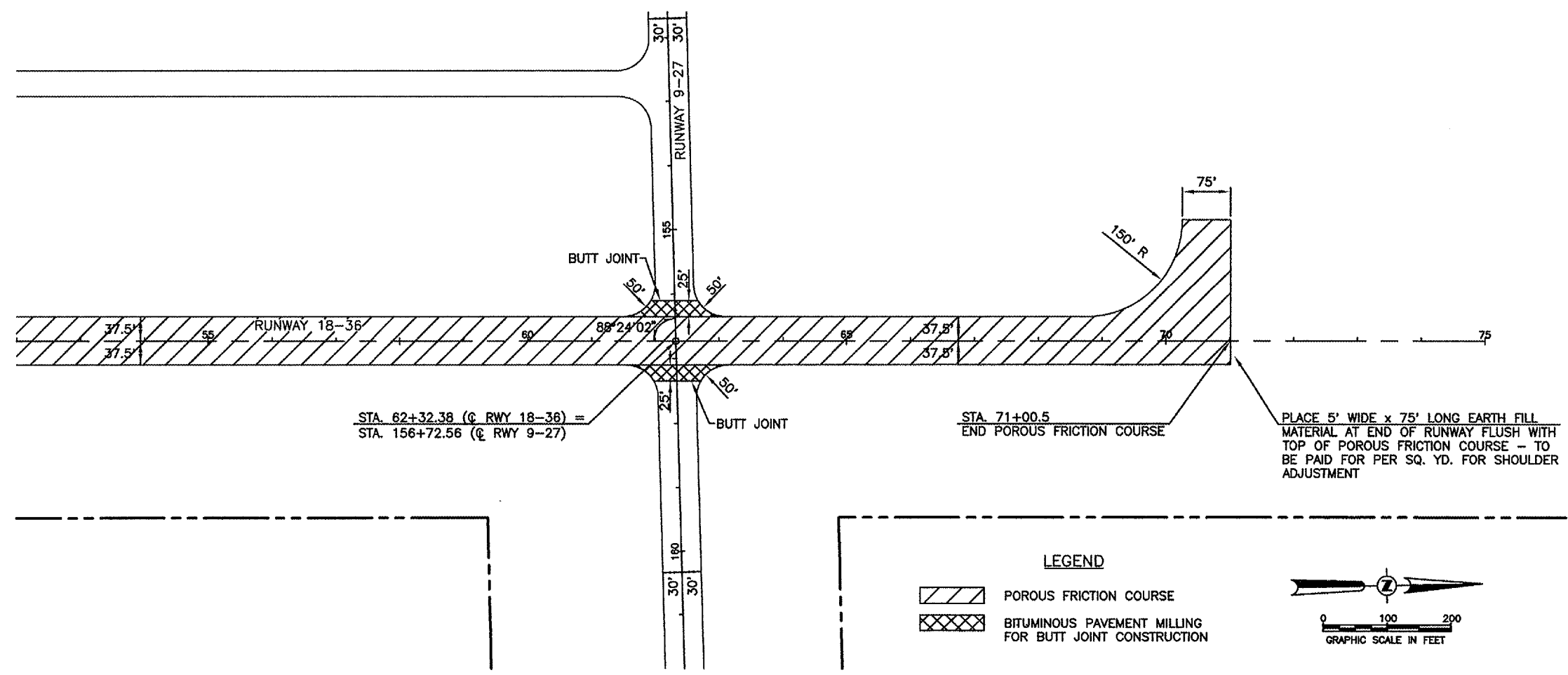


BASE COURSE CRACK REPAIR

30' RT TO 37.5' RT	STA. 52+61 =	1.7 SQ. YD.
37.5' LT TO 37.5' RT	STA. 53+10 =	16.7 SQ. YD.
25' LT TO 37.5' LT	STA. 53+62 =	2.8 SQ. YD.
@ TO 12.5' LT	STA. 53+67 =	2.8 SQ. YD.
12.5' RT TO 37.5' RT	STA. 54+17 =	5.6 SQ. YD.
@ TO 12.5' LT	STA. 54+26 =	2.8 SQ. YD.
37.5' LT TO 37.5' RT	STA. 54+62 =	16.7 SQ. YD.
@ TO 12.5' LT	STA. 55+18 =	2.8 SQ. YD.
@ TO 37.5' LT	STA. 55+58 =	8.3 SQ. YD.
7' RT TO 37.5' RT	STA. 55+58 =	6.8 SQ. YD.
10' LT TO 37.5' LT	STA. 56+67 =	6.1 SQ. YD.
12.5' RT TO 37.5' RT	STA. 56+67 =	5.6 SQ. YD.
25' LT TO 37.5' LT	STA. 57+15 =	2.8 SQ. YD.
25' LT TO 37.5' LT	STA. 57+37 =	2.8 SQ. YD.
25' LT TO 37.5' LT	STA. 58+58 =	2.8 SQ. YD.
25' LT TO 37.5' LT	STA. 58+96 =	2.8 SQ. YD.
25' LT TO 37.5' LT	STA. 59+25 =	2.8 SQ. YD.
37.5' LT TO 25' RT	STA. 59+76 =	13.9 SQ. YD.
25' LT TO 37.5' LT	STA. 60+06 =	2.8 SQ. YD.
37.5' LT TO 25' RT	STA. 60+31 =	13.9 SQ. YD.
37.5' LT TO 12.5' RT	STA. 61+12 =	11.1 SQ. YD.
@ TO 37.5' RT	STA. 63+81 =	8.3 SQ. YD.
25' RT TO 37.5' RT	STA. 64+53 =	2.8 SQ. YD.
@ TO 12.5' RT	STA. 65+09 =	2.8 SQ. YD.
@ TO 37.5' RT	STA. 65+63 =	8.3 SQ. YD.
@ TO 37.5' RT	STA. 65+68 =	8.3 SQ. YD.
27' LT TO 25' RT	STA. 66+16 =	11.6 SQ. YD.
30' LT TO 37.5' RT	STA. 66+65 =	15.0 SQ. YD.
25' RT TO 37.5' RT	STA. 67+25 =	2.8 SQ. YD.
27' LT TO 15' RT	STA. 67+44 =	9.3 SQ. YD.
37.5' LT TO 37.5' RT	STA. 68+21 =	16.7 SQ. YD.
@ TO 37.5' RT	STA. 68+64 =	8.3 SQ. YD.
37.5' LT TO 25' RT	STA. 69+15 =	13.9 SQ. YD.
10' LT TO 10' RT	STA. 69+54 =	4.4 SQ. YD.
12.5' LT TO 25' LT	STA. 70+10 =	2.8 SQ. YD.
TURNAROUND 85' LT	STA. 70+44.5 TO	
	STA. 71+00.5 =	12.4 SQ. YD.
TOTAL THIS SHEET =		262.1 SQ. YD.



INGERSOLL AIRPORT
CANTON, ILLINOIS

**RUNWAY 18 - 36
PLAN AND PROFILE**

HUTCHISON ENGINEERING, INC.
JACKSONVILLE, ILLINOIS

DRAWN BY: T.J.D. ILL. PROJ. NO. CRK-3713
DATE: NOVEMBER, 2007 AIP PROJ. NO. 3-17-0008-89