

STATE OF ILLINOIS
DEPARTMENT OF TRANSPORTATION
DIVISION OF HIGHWAYS

**PROPOSED
HIGHWAY PLANS**

VARIOUS ROUTES
SECTION D-7 OVD SIN STR REPL 14-42

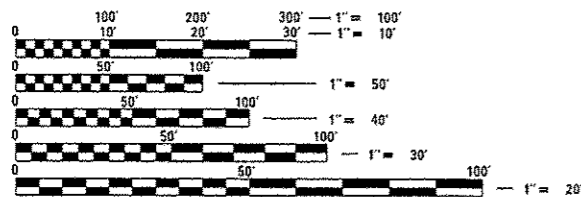
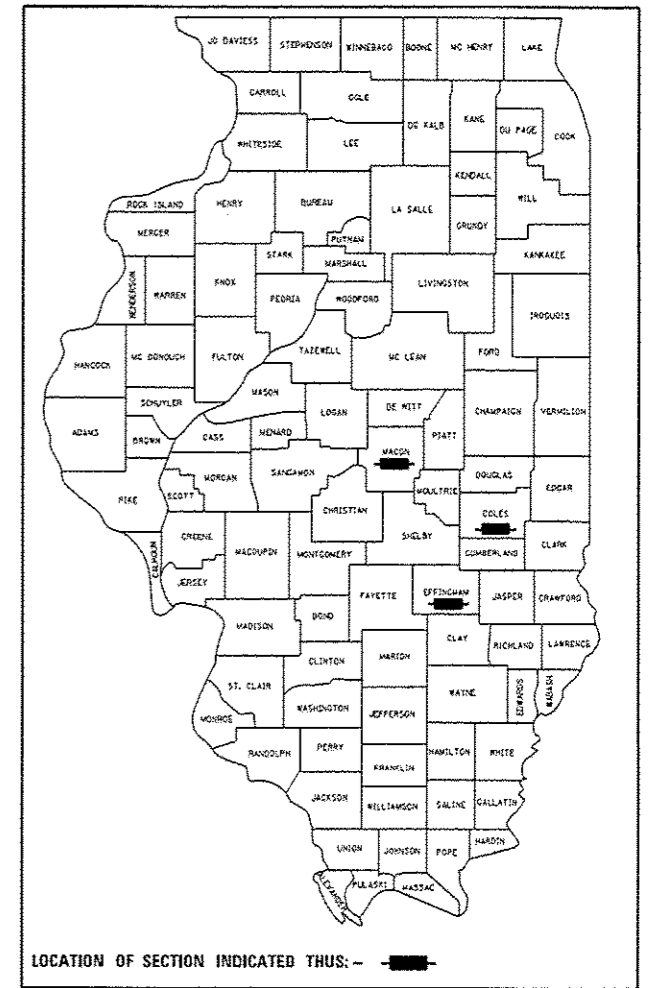
SIGN STRUCTURE REPLACEMENTS/REPAIRS
EFFINGHAM, MACON & COLES COUNTIES

C-60-044-14

FOR INDEX OF SHEETS, SEE SHEET NO. 5

F.A. RTE.	SECTION	COUNTY	TOTAL SHEETS	SHEET NO.
		ILLINOIS	33	1
CONTRACT NO. 46306				

* D7 OVC SIN STR REPL 14-42
** EFFINGHAM, MACON, COLES



FULL SIZE PLANS HAVE BEEN PREPARED USING STANDARD ENGINEERING SCALES. REDUCED SIZED PLANS WILL NOT CONFORM TO STANDARD SCALES. IN MAKING MEASUREMENTS ON REDUCED PLANS, THE ABOVE SCALES MAY BE USED.

J.U.L.I.E.
JOINT UTILITY LOCATION INFORMATION FOR EXCAVATION
1-800-892-0123
OR 811

PROJECT ENGINEER: MATT WEIDNER
PROJECT MANAGER:

CONTRACT NO. 46306

EFFINGHAM COUNTY LOCATION MAP
F.A.I. 70 ON SHEET NO. 2

MACON COUNTY LOCATION MAP
VARIOUS ROUTES ON SHEET NO. 3

COLES COUNTY LOCATION MAP
F.A.I. 57 ON SHEET NO. 4

STATE OF ILLINOIS
DEPARTMENT OF TRANSPORTATION
DIVISION OF HIGHWAYS

SUBMITTED 2/7 20 14
Justin Mann
DEPUTY DIRECTOR OF HIGHWAYS, REGION ENGINEER

March 21 20 14
John D. Baranzelli, PE
ENGINEER OF DESIGN AND ENVIRONMENT

March 21 20 14
Omer Asman, PE
DIRECTOR OF HIGHWAYS, CHIEF ENGINEER

PRINTED BY THE AUTHORITY
OF THE STATE OF ILLINOIS