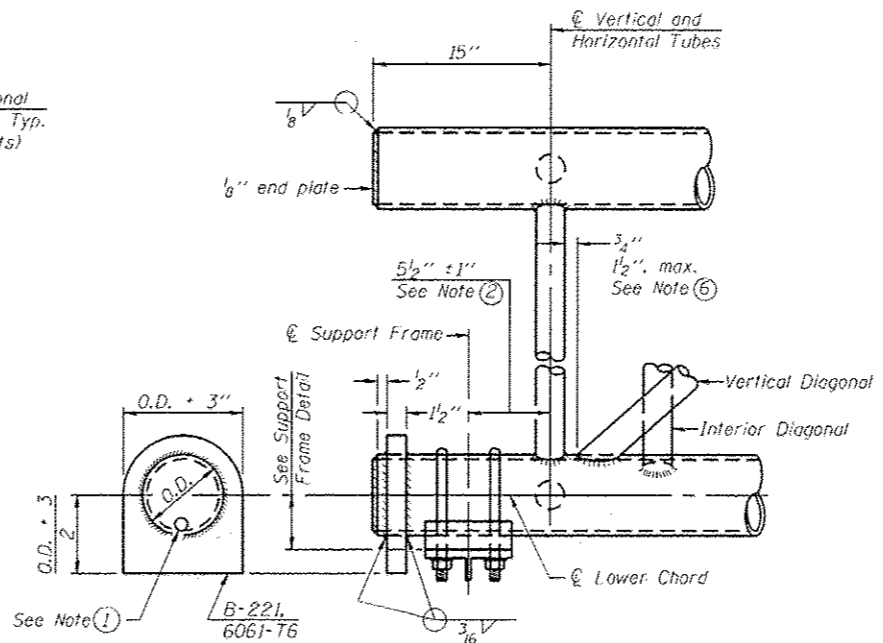
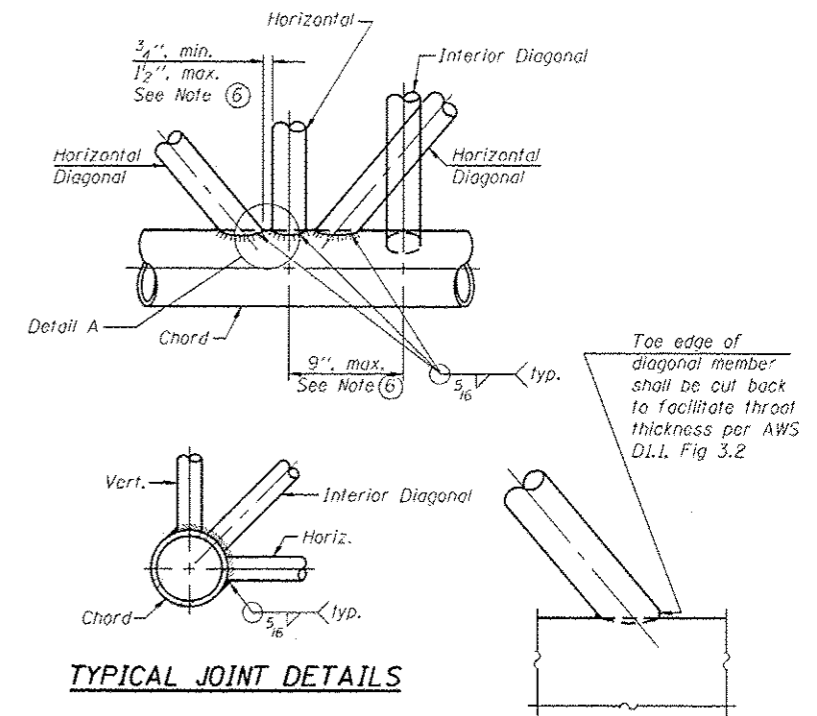


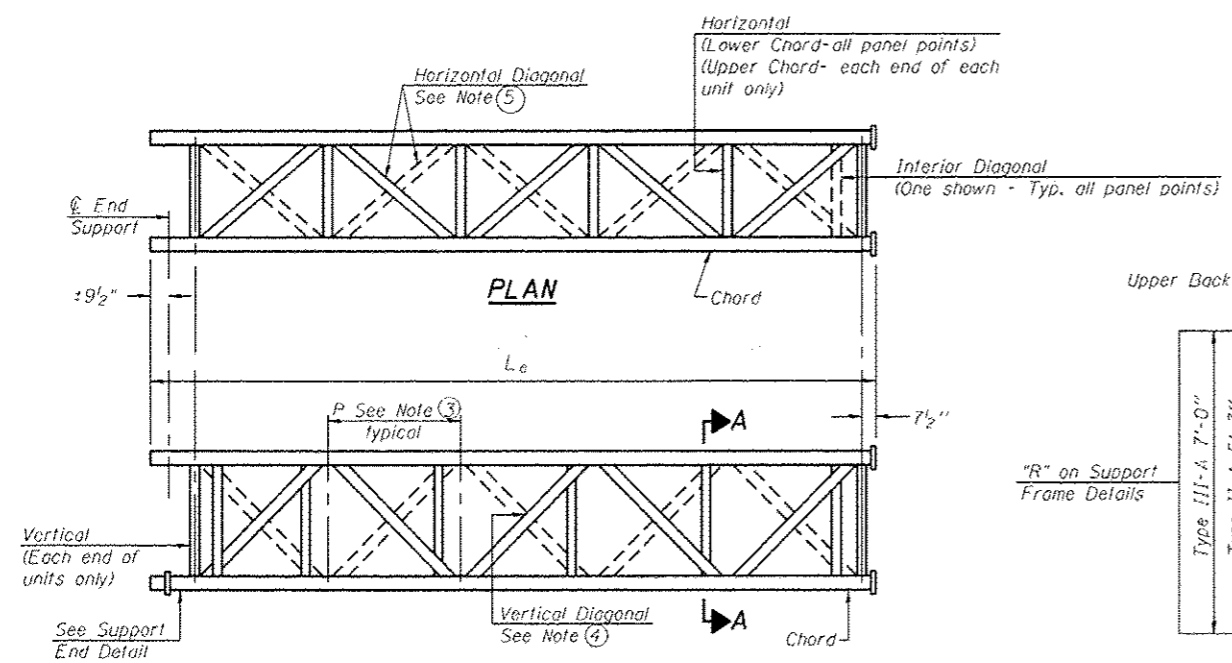
ELEVATION
TYPICAL INTERIOR UNIT
Even number of panels/interior unit required.



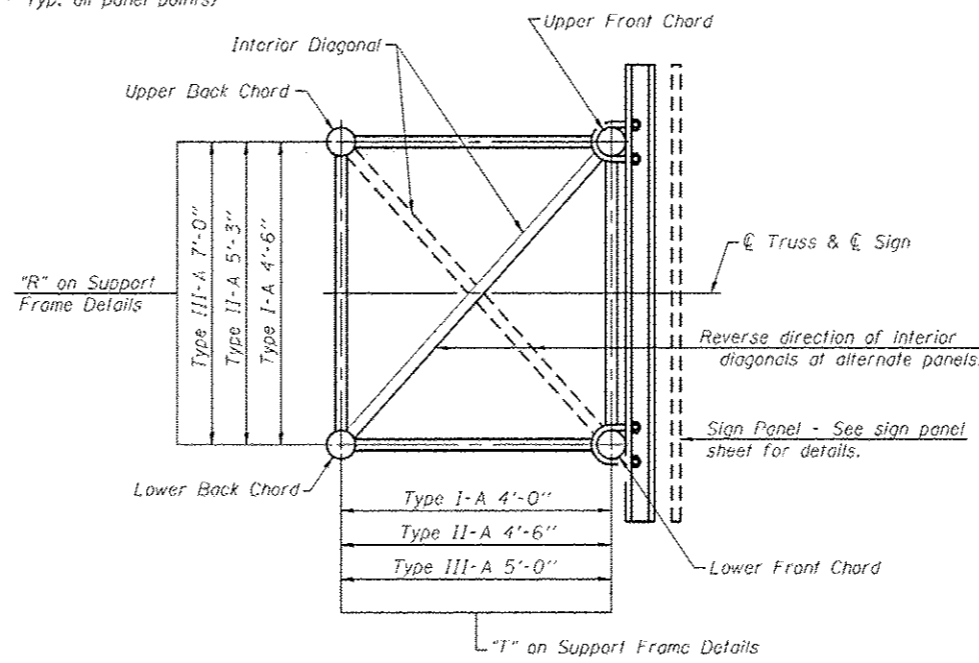
SUPPORT END DETAIL FOR EXTERIOR UNIT



TYPICAL JOINT DETAILS



ELEVATION
TYPICAL EXTERIOR UNIT
Even or odd number of panels/exterior units allowed.



SECTION A-A

- ① Contractor may alternatively use standard aluminum drive-fit cap to close end. 1/2" Ø drain hole in end plate/drive-fit cap. (Typ. at ends of all chords)
- ② 5 1/2" end dimension may vary by ± 1" to provide uniform panel spacing (P).
- ③ Panel spacing (P) shall be uniform for entire truss and between 4'-0" and 5'-0" for Type I-A or 4'-0" and 5'-6" for Types II-A and III-A.
- ④ Vertical Diagonals in front and back face shall alternate.
- ⑤ Hidden lines show wind bracing alternates direction between planes of top and bottom chords.
- ⑥ All diagonals shall be detailed for minimum offset from the panel point based on the following: Offset shall be such as to provide a 3/4" minimum to 1/2" maximum clearance between any diagonal and any horizontal or vertical member, and to provide clearance for U-bolt connections of signs or walkway brackets.

OS-A-2

6-1-12

FILE NAME	USER NAME	DESIGNED	REVISED
drawn_work\p\idost\stefanm\40308933\0	stefanm	-	-
	46380-shs-details.dgn	DRAWN	REVISED
		-	-
	PLOT SCALE = 100,0000 1/2 in.	CHECKED	REVISED
		-	-
	PLOT DATE = 10/24/2013	DATE	REVISED
		-	-

STATE OF ILLINOIS
DEPARTMENT OF TRANSPORTATION

OVERHEAD SIGN STRUCTURES - ALUMINUM TRUSS
DETAILS FOR TRUSS TYPES I-A, II-A AND III-A

F.A. RTE.	SECTION	COUNTY	TOTAL SHEETS	SHEET NO.
VAR5	*	**	47	9
* DT OVC SIN STR REPL 14-42			CONTRACT NO. 46306	
ILLINOIS FED. AID PROJECT				
**EFFINGHAM, MACON, COLES				

SCALE: SHEET OF SHEETS STA. TO STA.