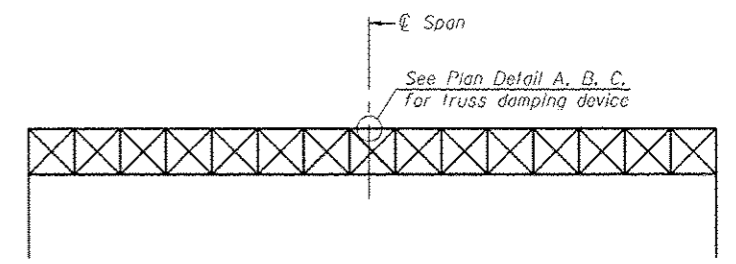
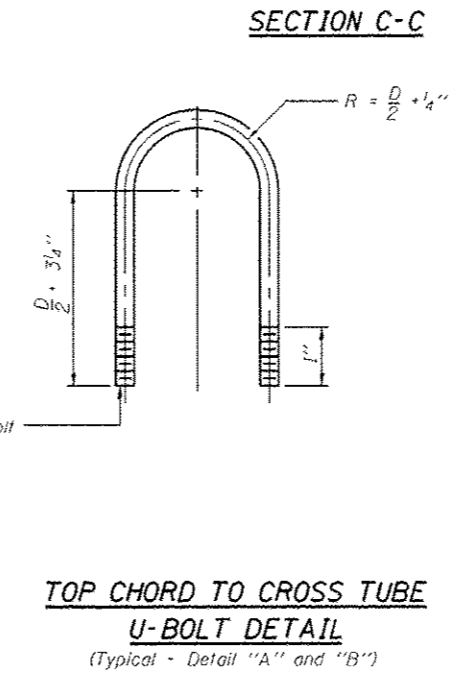
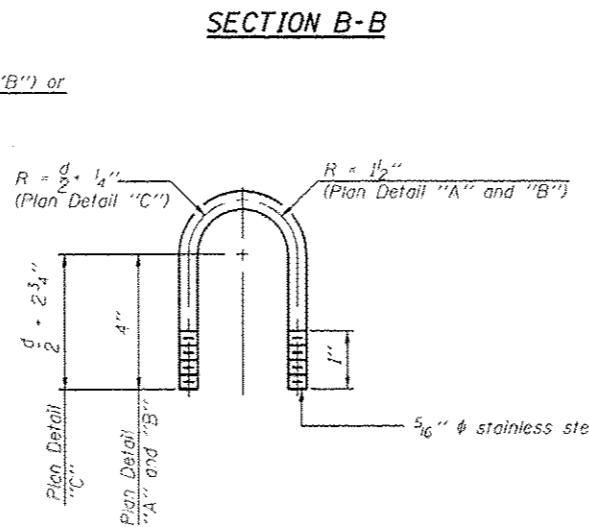
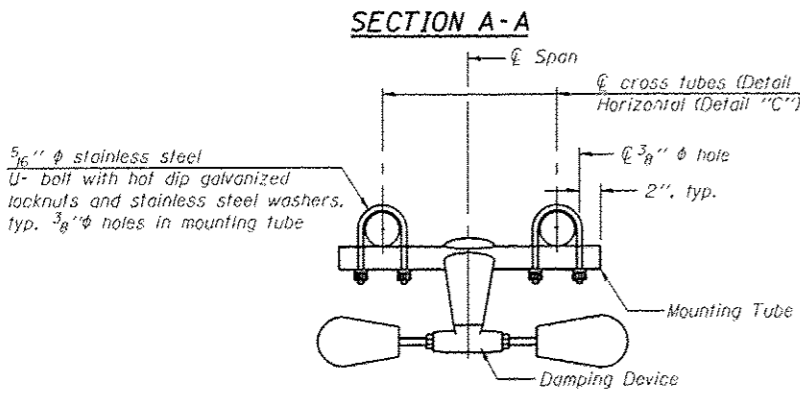
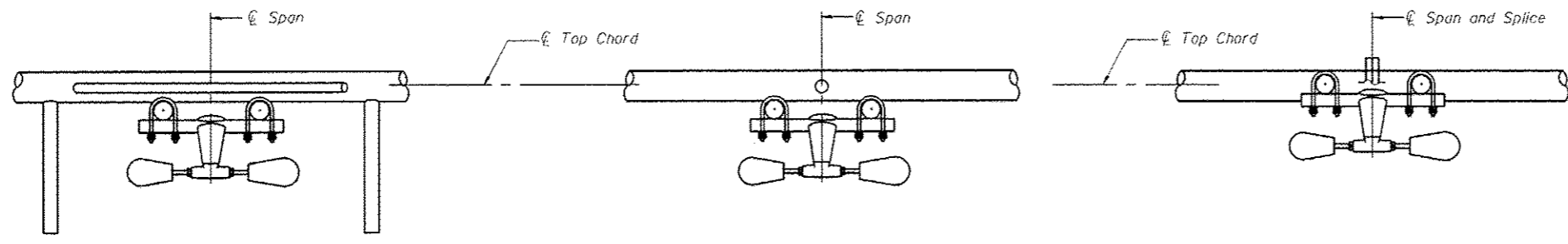


* Center of horizontal to center of splice dimension may vary. Verify before drilling holes in mounting tube.

- NOTES**
- Damper: One damper per truss. (31 lbs. minimum Stockbridge-Type Aluminum - 29" minimum between ends of weights) Cost included in Overhead Sign Structure...
- Materials: Materials: Aluminum tubes shall be ASTM B221 alloy 6061 temper T6. Cost included in Overhead Sign Structure...



OS-A-D

6-1-12

FILE NAME: c:\pwworkspace\steffenak\d0350933\02	USER NAME: steffan	DESIGNED: -	REVISED: -	STATE OF ILLINOIS DEPARTMENT OF TRANSPORTATION	OVERHEAD SIGN STRUCTURE DAMPING DEVICE				F.A. RTE.	SECTION	COUNTY	TOTAL SHEETS	SHEET NO.
	6306-shs-detail.dgn	DRAWN: -	REVISED: -		SCALE: 1" = 10'-0"	SHEET	OF	SHEETS	STA.	TO STA.	• DT OVC SIN STR REPL 14-42	47	11
	PLT SCALE: 1/8" = 1'-0"	CHECKED: -	REVISED: -								CONTRACT NO. 46306		
	PLT DATE: 10/29/2013	DATE: -	REVISED: -								ILLINOIS FED. AID PROJECT		
											EFFINGHAM, MACON, COLES		