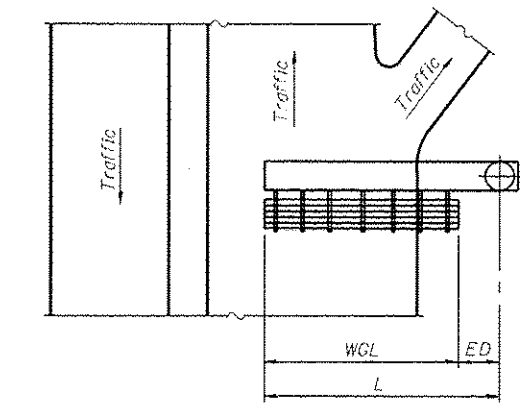
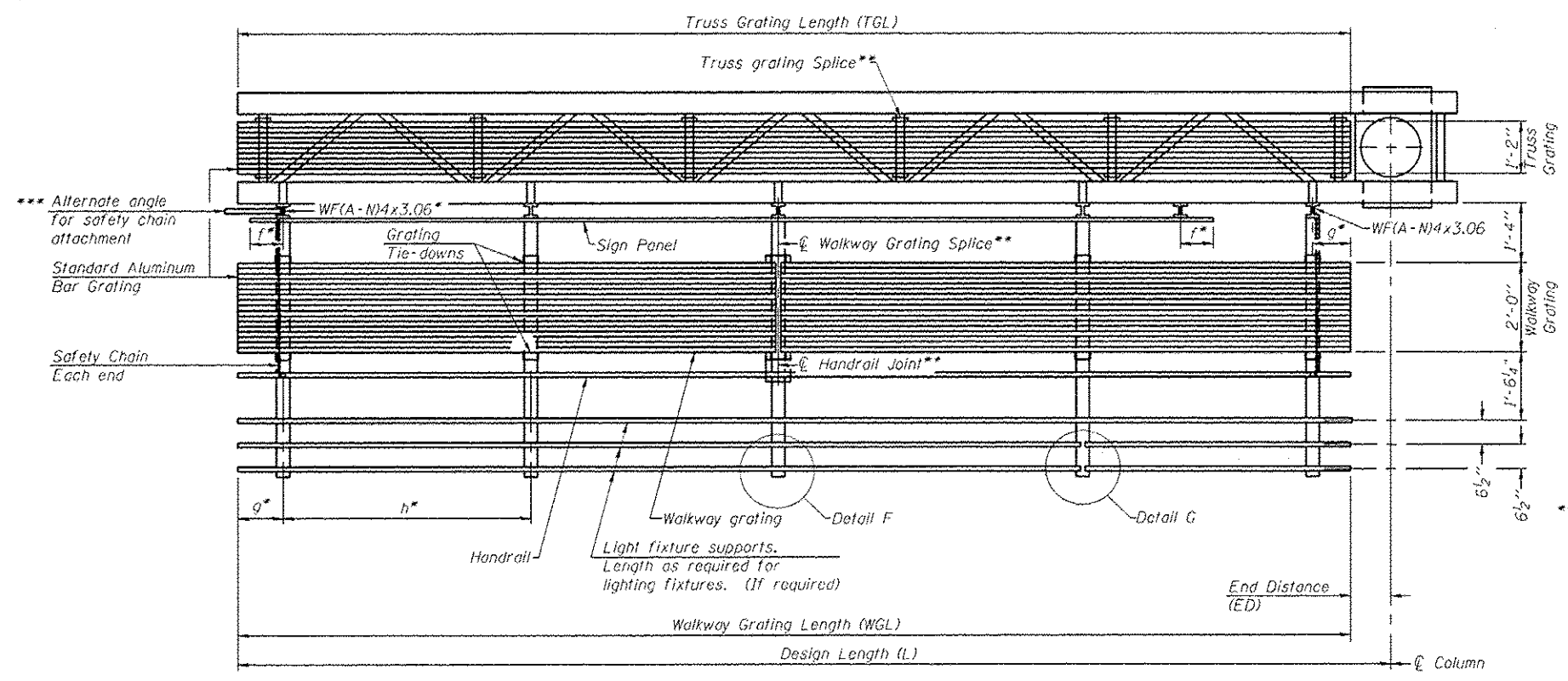


TYPICAL FRONT ELEVATION
With lights and handrail omitted for clarity.

Walkway and truss grating dimensions are nominal and may vary (width ± 1/2", depth ± 1/2") based on available standard widths.



PLAN
WALKWAY AND HANDRAIL SKETCH
(Road plan beneath truss varies)



SECTION A-A

Notes:
 * Space walkway brackets WF(A-N)4x3.06 and sign brackets WF(A-N)4x1.79 for efficiency and within limits shown:
 f = 12" maximum, 4" minimum (End of sign to center of nearest bracket)
 g = 12" maximum, 4" minimum (End of walkway to center of nearest bracket)
 h = 5'-0" maximum (center to center sign and/or walkway support brackets, WF(A-N)4x1.79 or WF(A-N)4x3.06)
 *** If walkway bracket at safety chain location is behind sign, add angle to bracket. See alternate safety chain attachment on base sheet OSC-A-8.
 For details of sign placement, sign/walkway brackets, truss and walkway gratings, grating splices and Section B-B, see Base Sheet OSC-A-7.
 For details of handrail, handrail joint, safety chain and Details F and G, see Base Sheet OSC-A-8.

Truss grating to facilitate inspection shall run full length of cantilevers. Cost of truss grating is included in Overhead Sign Structure Cantilever.

Handrail and walkway grating shall span a minimum of three brackets between splices.
 ** Use and location of handrail joints or grating splices are optional, based on lengths needed and material availability.

$$TGL = L - \left(\frac{\text{Post O.D.}}{2} + 6'' \right)$$

BRACKET TABLE

WF(A-N)4x1.79 or WF(A-N)4x3.06 ASTM B308, Alloy 6061-T6		
Sign Width		Number Brackets Required
Greater Than	Less Than or Equal To	
	8'-0"	2
8'-0"	14'-0"	3
14'-0"	20'-0"	4
20'-0"	26'-0"	5
26'-0"	32'-0"	6

OSC-A-6

6-1-12

FILE NAME: c:\p\work\p\scd\osc-a-6\osc-a-6.dgn	USER NAME: steffennk	DESIGNED: -	REVISED: -	STATE OF ILLINOIS DEPARTMENT OF TRANSPORTATION	CANTILEVER SIGN STRUCTURES - ALUMINUM WALKWAY DETAILS - ALUMINUM TRUSS & STEEL POST	F.A. RATE:	SECTION:	COUNTY:	TOTAL SHEETS:	SHEET NO.:		
PLOT SCALE: 1/8" = 1'-0"	PLOT DATE: 10/29/2013	DRAWN: -	REVISED: -			SCALE:	SHEET OF SHEETS:	STA. TO STA.	ILLINOIS FED. AID PROJECT:	CONTRACT NO. 46306	47	19
		CHECKED: -	REVISED: -									
		DATE: -	REVISED: -									

**EFFINGHAM, MACON, COLES