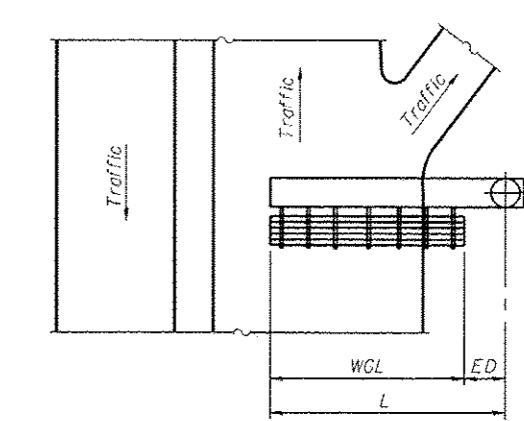
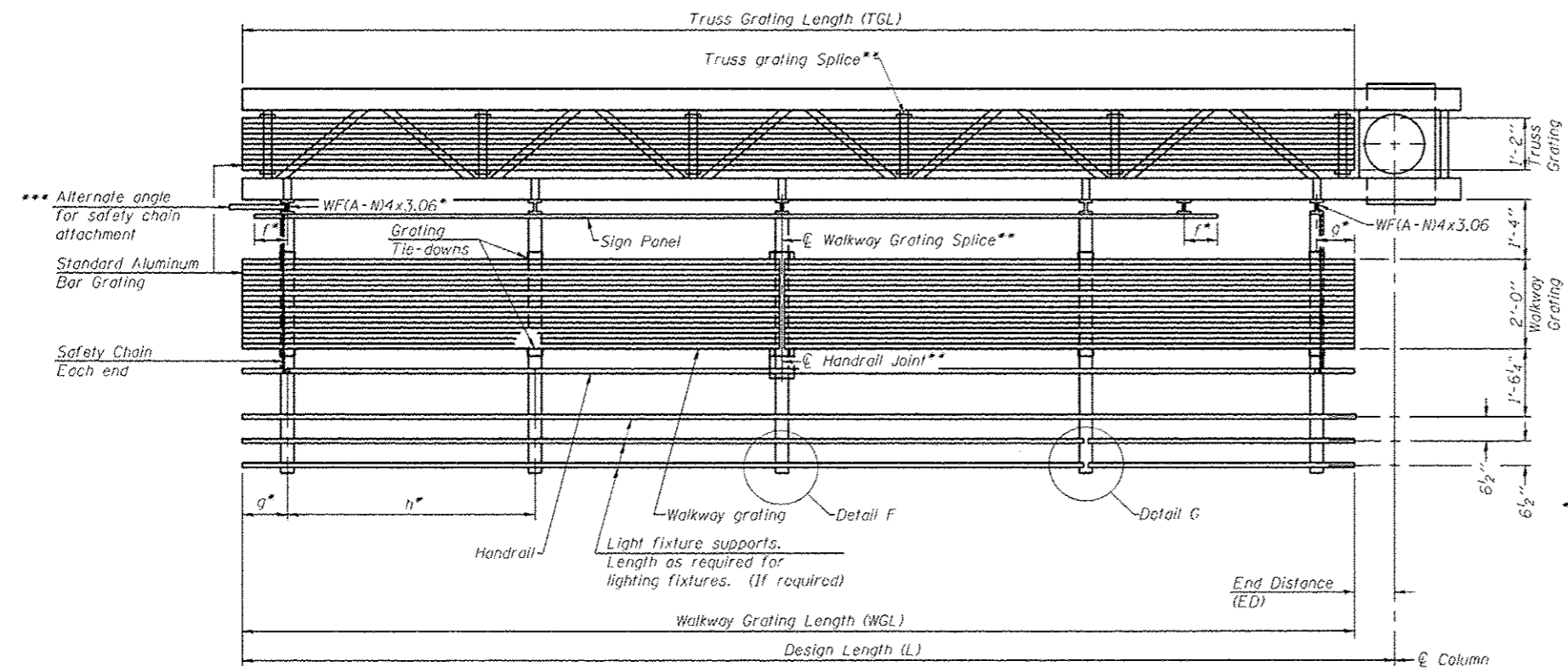


**TYPICAL FRONT ELEVATION**  
With lights and handrail omitted for clarity.



**PLAN WALKWAY AND HANDRAIL SKETCH**  
(Road plan beneath truss varies)

Walkway and truss grating dimensions are nominal and may vary (width ±1/2", depth ±1/2") based on available standard widths.



**SECTION A-A**

Truss grating to facilitate inspection shall run full length of cantilevers. Cost of truss grating is included in Overhead Sign Structure Cantilever.

Handrail and walkway grating shall span a minimum of three brackets between splices.  
\*\* Use and location of handrail joints or grating splices are optional, based on lengths needed and material availability.

$$TGL = L - \left( \frac{\text{Post O.D.}}{2} + 6'' \right)$$

Structure Number	Station	WGL	ED	TGL
7C0151057R189.7	788+72	20'-0"	1'-6"	28'-6"

Notes:  
 \* Space walkway brackets WF(A-N)4x3.06 and sign brackets WF(A-N)4x1.79 for efficiency and within limits shown:  
 f = 12" maximum, 4" minimum (End of sign to center of nearest bracket)  
 g = 12" maximum, 4" minimum (End of walkway to center of nearest bracket)  
 h = 6'-0" maximum (center to center sign and/or walkway support brackets, WF(A-N)4x1.79 or WF(A-N)4x3.06)  
 \*\*\* If walkway bracket at safety chain location is behind sign, add angle to bracket. See alternate safety chain attachment on base sheet OSC-A-8.  
 For details of sign placement, sign/walkway brackets, truss and walkway gratings, grating splices and Section B-B, see Base Sheet OSC-A-7.  
 For details of handrail, handrail joint, safety chain and Details F and G, see Base Sheet OSC-A-8.

**BRACKET TABLE**

WF(A-N)4x1.79 or WF(A-N)4x3.06  
ASTM B308, Alloy 6061-T6

Sign Width		Number Brackets Required
Greater Than	Less than or Equal To	
8'-0"	8'-0"	2
14'-0"	14'-0"	3
20'-0"	20'-0"	4
26'-0"	26'-0"	5
32'-0"	32'-0"	6

OSC-A-6

6-1-12

FILE NAME -	USER NAME - steffennk	DESIGNED -	REVISED -
c:\pwworkspace\steffennk\100358933\100358933.dwg	10/29/2013 10:06:38 AM	DRAWN -	REVISED -
PLOT SCALE = 1/8" = 1'-0"		CHECKED -	REVISED -
PLOT DATE = 10/29/2013		DATE -	REVISED -

STATE OF ILLINOIS  
DEPARTMENT OF TRANSPORTATION

CANTILEVER SIGN STRUCTURES - ALUMINUM WALKWAY  
DETAILS - ALUMINUM TRUSS & STEEL POST

SCALE: SHEET OF SHEETS STA. TO STA.

F.A. R.T.E.	SECTION	COUNTY	TOTAL SHEETS	SHEET NO.
VAR		**	47	25
* DT OVC SIGN STR REPL 14-42			CONTRACT NO. 46306	
ILLINOIS FED. AID PROJECT				

\*\*EFFINGHAM, MACON, COLES