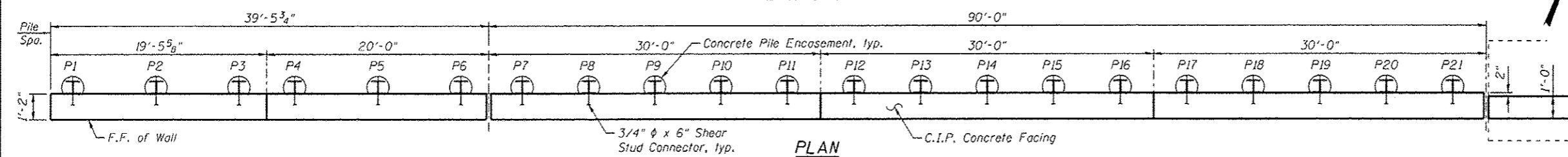
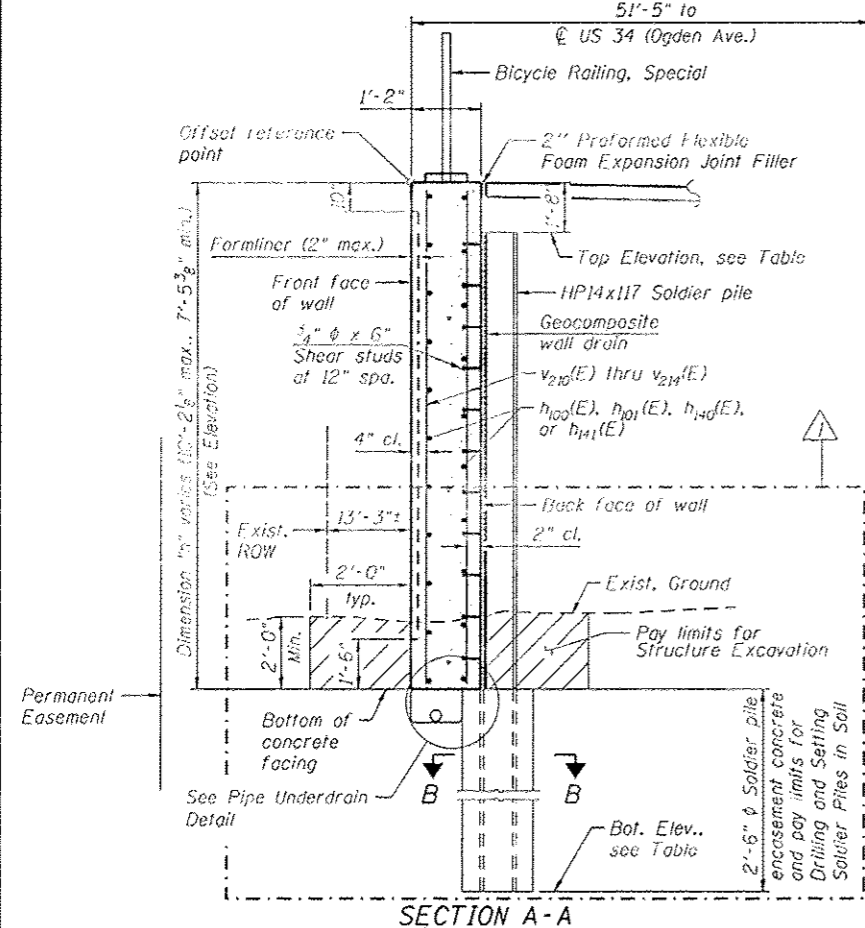


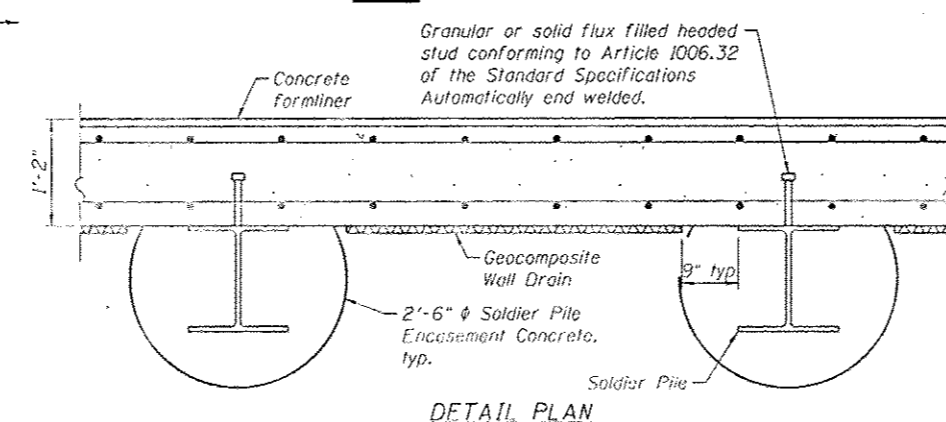
ELEVATION



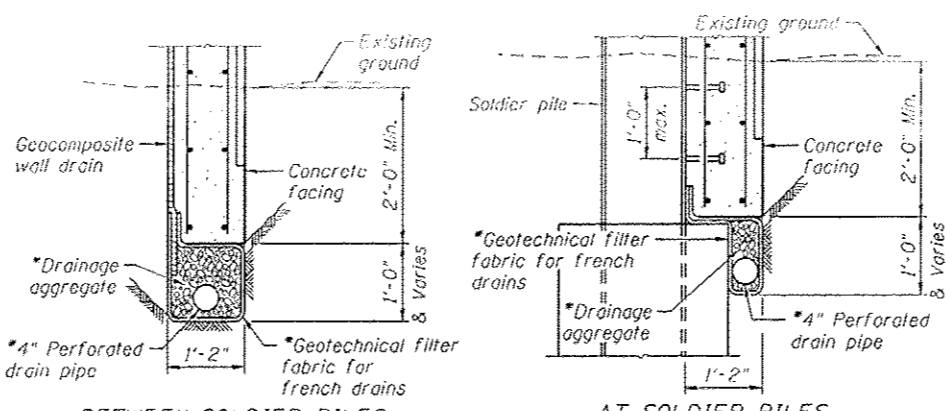
PLAN



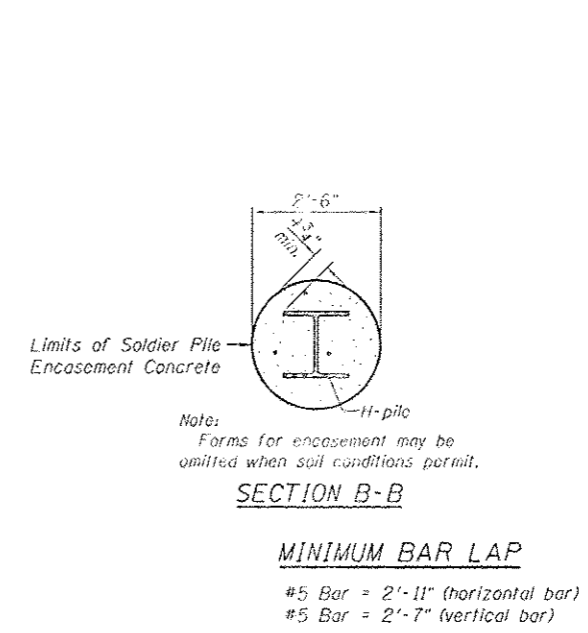
SECTION A-A



DETAIL PLAN



PIPE UNDERDRAIN DETAIL



SECTION B-B
MINIMUM BAR LAP

PILE DATA

Pile No.	Top Elev.	Bottom Elev.	Length Ft.	No. of Studs
P1	708.84	686.92	21'-11"	7
P2	709.06	686.98	22'-1"	7
P3	709.29	686.96	22'-4"	7
P4	709.45	686.95	22'-6"	7
P5	709.69	686.94	22'-9"	8
P6	709.94	686.94	23'-0"	8
P7	710.12	685.96	24'-2"	8
P8	710.33	686.00	24'-4"	8
P9	710.54	685.96	24'-7"	9
P10	710.76	685.92	24'-10"	9
P11	710.98	685.98	25'-0"	9
P12	711.20	686.95	24'-3"	8
P13	711.42	686.92	24'-6"	8
P14	711.66	686.99	24'-8"	9
P15	711.89	686.97	24'-11"	9
P16	712.13	686.96	25'-2"	9
P17	712.37	687.95	24'-5"	8
P18	712.62	687.95	24'-8"	9
P19	712.87	687.95	24'-11"	9
P20	713.12	687.96	25'-2"	9
P21	713.38	687.97	25'-5"	9

NOTES:

1. F.F. - Denotes Front Face
B.F. - Denotes Back Face
E.F. - Denotes Each Face
2. See Sheet SW-2 for Bill of Material.
3. See Sheet SW-9 for Bar Bending and Cutting Diagrams, Bill of Bars, Concrete Construction Joint, and Expansion Joint details.
4. For Bicycle Railing post location spacing see General Plan and Elevation Sheet.
5. All structural steel shall conform to the requirements of AASHTO M270 grade 50.

Rev. Sheet 4-21-14



USER NAME :	DESIGNED - KMP	REVISED - 04/11/2014 A.M.X.
PLOT SCALE :	CHECKED - AMX	REVISED
PLOT DATE : 03/19/2014	DRAWN - STB	REVISED
	CHECKED - MAD	REVISED

STATE OF ILLINOIS
DEPARTMENT OF TRANSPORTATION

DETAIL PLAN AND ELEVATION 1
STRUCTURE NO. 022-W069
SHEET NO. SW-3 OF SW-15 SHEETS

F.A.P. RTE. 311	SECTION 652-A	COUNTY OUPAGE	TOTAL SHEETS 383	SHEET NO. 235
ILLINOIS FED. AID PROJECT			CONTRACT NO. 60R06	