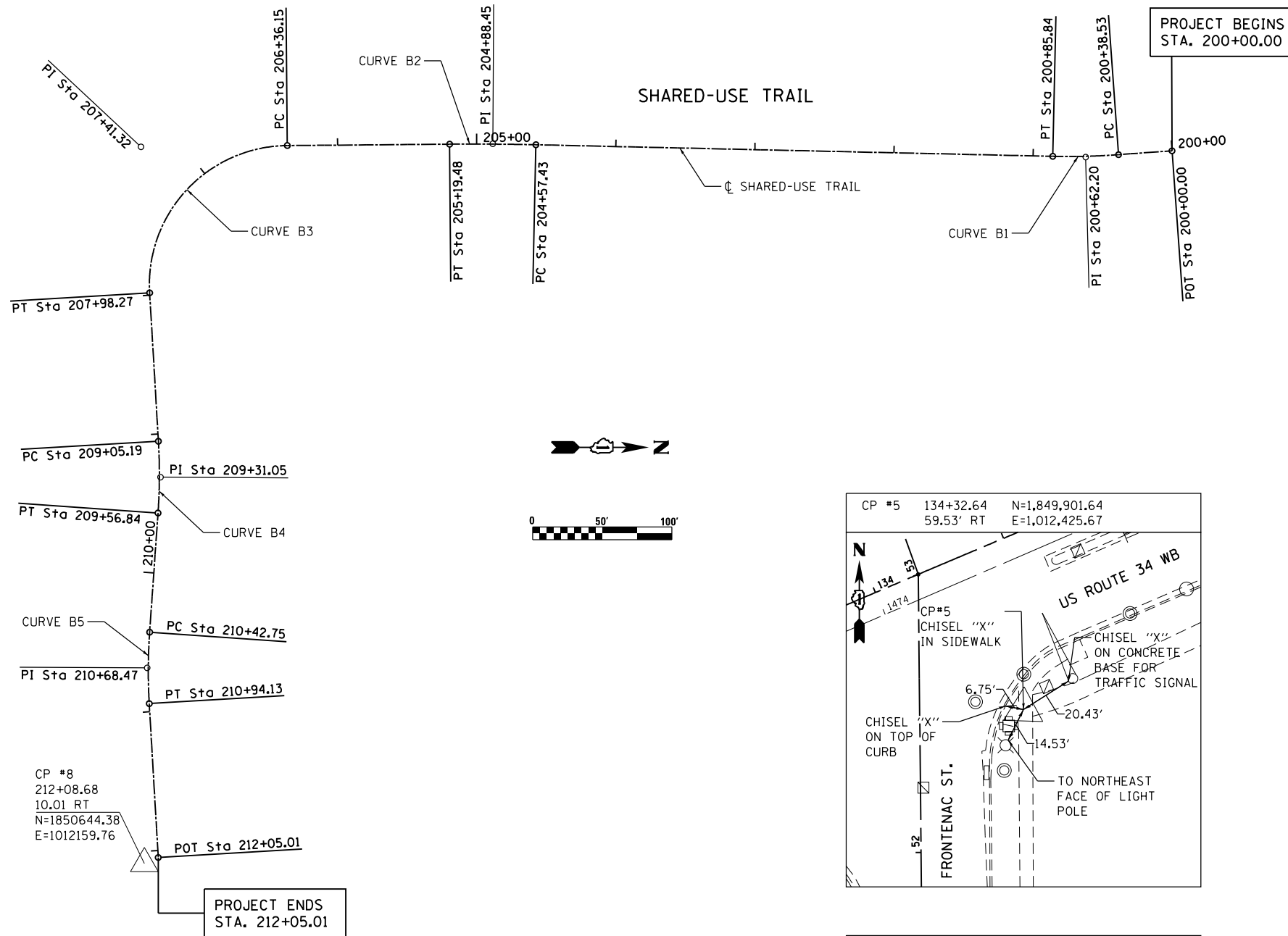
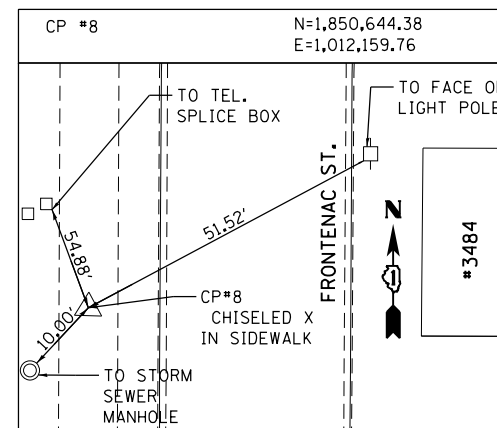
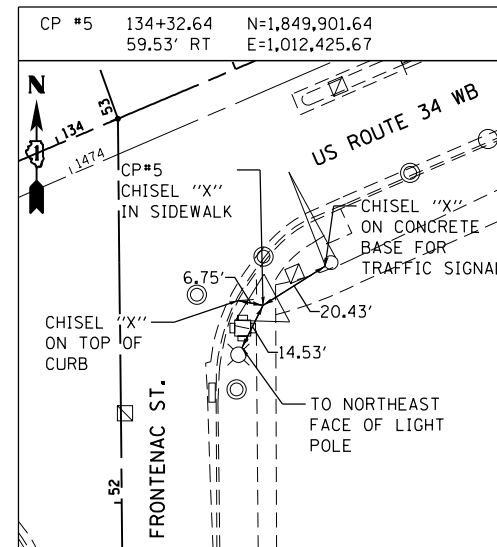


NOTE: BENCHMARKS FOR THE PROJECT ARE DESCRIBED IN THE PLANS. ALL BEARINGS AND COORDINATES REFERENCED IN THE PLAN DRAWINGS AND ALL CONTROL COORDINATES ARE BASED ON THE ILLINOIS STATE PLANE COORDINATE SYSTEM, EAST ZONE, NAD83(2007). ALL ELEVATIONS ARE BASED ON NATIONAL GEODESIC VERTICAL DATUM 1929 (NGVD29).



CONSTRUCTION LAYOUT: SHARED-USE TRAIL		
STATION	NORTHING	EASTING
200+00.00	1,851,387.39	1,011,653.61
201+00.00	1,851,287.50	1,011,656.39
202+00.00	1,851,187.54	1,011,653.28
203+00.00	1,851,087.59	1,011,650.18
204+00.00	1,850,987.64	1,011,647.08
205+00.00	1,850,887.68	1,011,644.43
206+00.00	1,850,787.68	1,011,644.34
207+00.00	1,850,691.93	1,011,664.04
208+00.00	1,850,651.75	1,011,751.11
209+00.00	1,850,656.79	1,011,850.98
210+00.00	1,850,652.93	1,011,950.80
211+00.00	1,850,649.12	1,012,050.62
212+00.00	1,850,654.09	1,012,150.49
212+05.01	1,850,654.34	1,012,155.50

SHARED-USE TRAIL		
	NORTHING	EASTING
B1	PC 1,851,348.93	1,011,656.06
	PI 1,851,325.31	1,011,657.56
	PT 1,851,301.65	1,011,656.83
B2	PC 1,850,930.24	1,011,645.30
	PI 1,850,899.23	1,011,644.34
	PT 1,850,868.20	1,011,644.34
B3	PC 1,850,751.53	1,011,644.34
	PI 1,850,646.36	1,011,644.34
	PT 1,850,651.66	1,011,749.38
B4	PC 1,850,657.05	1,011,856.16
	PI 1,850,658.35	1,011,881.99
	PT 1,850,656.32	1,011,907.77
B5	PC 1,850,649.57	1,011,993.41
	PI 1,850,647.55	1,012,019.06
	PT 1,850,648.82	1,012,044.75



NA 30001 DUPAGE COUNTY GEOGRAPHIC SURVEY MONUMENT

To reach the station from the junction of Ill. Route 59 and U.S. Route 34 (Ogden Av.), go north on Ill. Rt. 59 0.20 mile to Mc Coy Dr.. Turn left and go west on Mc Coy Dr. 1.95 miles to Eola Rd.. Turn left and go south on Eola Rd. 0.50 mile to the intersection with Waubonsie Creek. The station is at the southwest corner of said intersection. A brass disk monument established in concrete headwall for Waubonsie Creek along the west line of Eola Rd. stamped Du Page County Maps and Plats.

PROJECT BENCHMARK ELEVATIONS DATUM: N.G.V.D. OF 1929				
NO.	STATION OFFSET	COORDINATES	DESCRIPTION	ELEV.
NA 30001	N/A	N/A	BRASS DISK MONUMENT ESTABLISHED IN CONCRETE HEADWALL OF WAUBONSIE CREEK ALONG THE WEST LINE OF EOLA RD. (DUPAGE COUNTY MONUMENT)	679.06
CP#5		N=1,849,901.64 E=1,012,425.67	CHISELED "X" ON SIDEWALK IN SOUTHEAST CORNER OF US ROUTE 34 & FRONTENAC ST. INTERSECTION	709.65
CP#8	212+08.68 10.01 RT	N=1,850,644.38 E=1,012,159.76	CHISELED X IN SIDEWALK ACROSS THE STREET FROM #3484 FRONTENAC ST.	706.34

SHARED-USE TRAIL				
PROP. CURVE B1	PROP. CURVE B2	PROP. CURVE B3	PROP. CURVE B4	PROP. CURVE B5
PI STA. = 200+62.20	PI STA. = 204+88.45	PI STA. = 207+41.32	PI STA. = 209+31.05	PI STA. = 210+68.47
Δ = 5° 25' 14" (RT)	Δ = 1° 46' 40" (LT)	Δ = 92° 53' 22" (LT)	Δ = 7° 23' 55" (RT)	Δ = 7° 21' 34" (LT)
D = 11° 27' 33"	D = 2° 51' 53"	D = 57° 17' 45"	D = 14° 19' 26"	D = 14° 19' 26"
R = 500.00'	R = 2,000.00'	R = 100.00'	R = 400.00'	R = 400.00'
T = 23.67'	T = 31.03'	T = 105.17'	T = 25.86'	T = 25.72'
L = 47.30'	L = 62.05'	L = 162.12'	L = 51.65'	L = 51.38'
E = 0.56'	E = 0.24'	E = 45.13'	E = 0.84'	E = 0.83'
e = RC	e = RC	e = RC	e = RC	e = RC
P.C. STA = 200+38.53	P.C. STA = 204+57.43	P.C. STA = 206+36.15	P.C. STA = 209+05.19	P.C. STA = 210+42.75
P.T. STA = 200+85.84	P.T. STA = 205+19.48	P.T. STA = 207+98.27	P.T. STA = 209+56.84	P.T. STA = 210+94.13

FILE NAME = Q:\1001\_25368367\_US\_34.ctb CN P:\2\Drawings\Roadway\11\gmmnt\016R06-Sht-A1.dwg 02/28/2014



USER NAME = URS	DESIGNED - MB	REVISED -
PLOT SCALE = 100.0000' / in.	DRAWN - KJB	REVISED -
PLOT DATE = 02/28/2014	CHECKED - SPF	REVISED -
	DATE - 02/28/2014	REVISED -

STATE OF ILLINOIS  
DEPARTMENT OF TRANSPORTATION

ALIGNMENT, TIES & BENCHMARKS

SCALE: 50 SHEET NO. 1 OF 1 SHEETS STA. TO STA.

F.A.P. RTE.	SECTION	COUNTY	TOTAL SHEETS	SHEET NO.
311	652-A	DUPAGE	383	45
CONTRACT NO. 60R06				
FED. ROAD DIST. NO. 1 ILLINOIS FED. AID PROJECT				