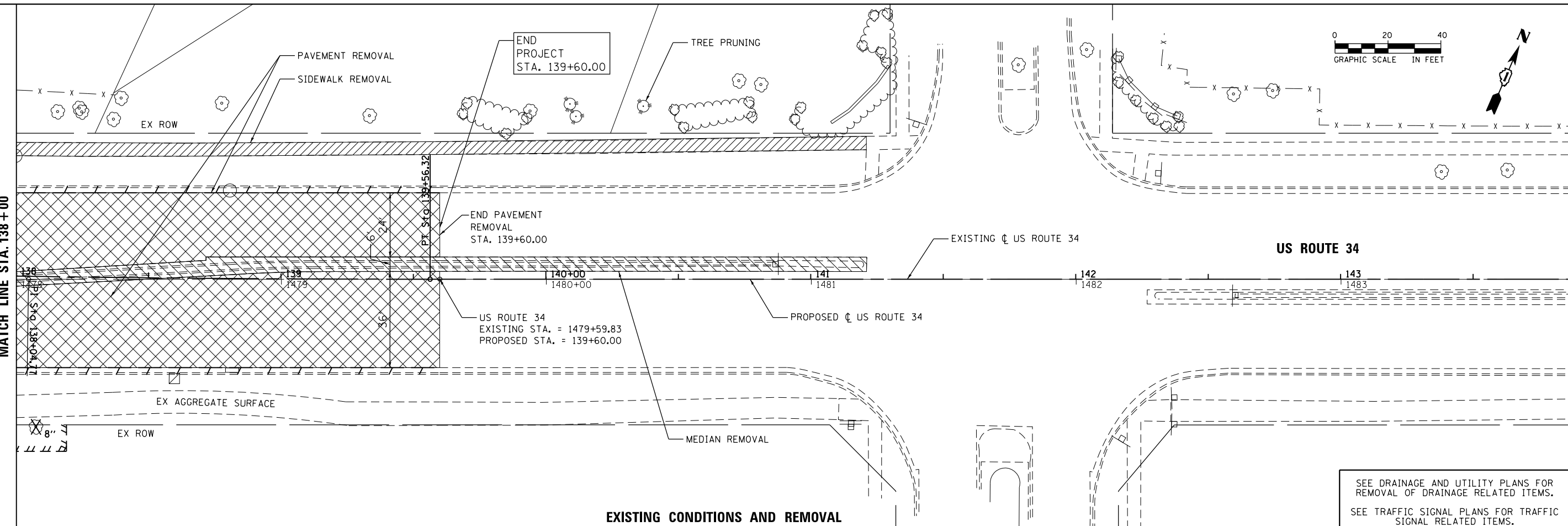




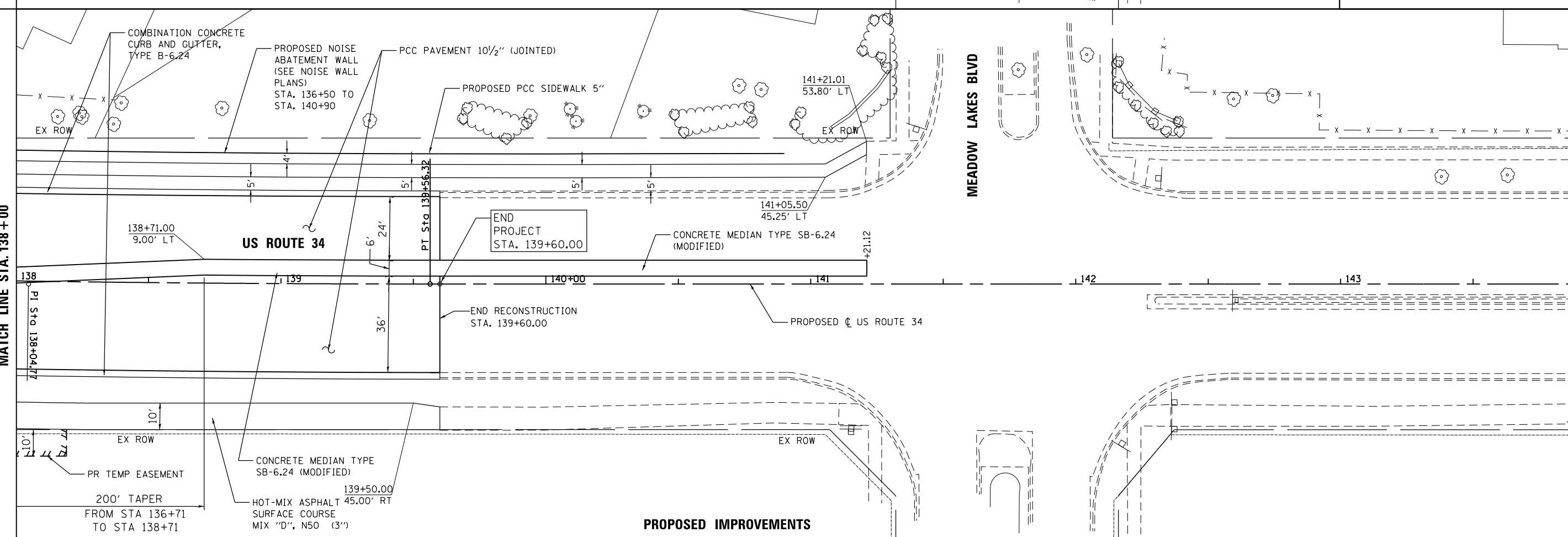
MATCH LINE STA. 138+00



EXISTING CONDITIONS AND REMOVAL

SEE DRAINAGE AND UTILITY PLANS FOR REMOVAL OF DRAINAGE RELATED ITEMS.
SEE TRAFFIC SIGNAL PLANS FOR TRAFFIC SIGNAL RELATED ITEMS.

MATCH LINE STA. 138+00



PROPOSED IMPROVEMENTS

**ROADWAY PLAN
US ROUTE 34**

SCALE: 20 SHEET NO. 8 OF 8 SHEETS STA. 138+00 TO STA. 143+90



USER NAME = URS	DESIGNED - MB	REVISED -
	DRAWN - KJB	REVISED -
PLOT SCALE = 40.0000' / in.	CHECKED - SPF	REVISED -
PLOT DATE = 02/28/2014	DATE - 02/28/2014	REVISED -

**STATE OF ILLINOIS
DEPARTMENT OF TRANSPORTATION**

F.A.P. RTE. 311	SECTION 652-A	COUNTY DUPAGE	TOTAL SHEETS 383	SHEET NO. 53
CONTRACT NO. 60R06				
FED. ROAD DIST. NO. 1 ILLINOIS FED. AID PROJECT				

FILE NAME = Q:\100T_25368367_US_34.ctb CN P:\2\Drawings\Roadway\Plan&Profile\16161065-sht-Plan_008.dgn