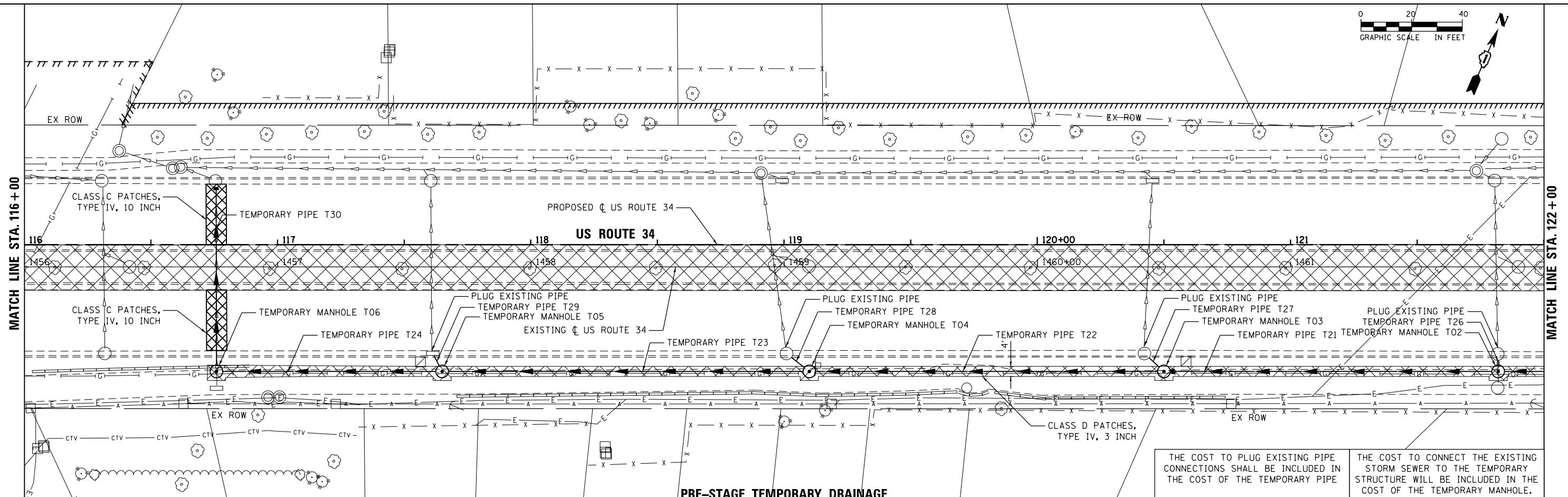


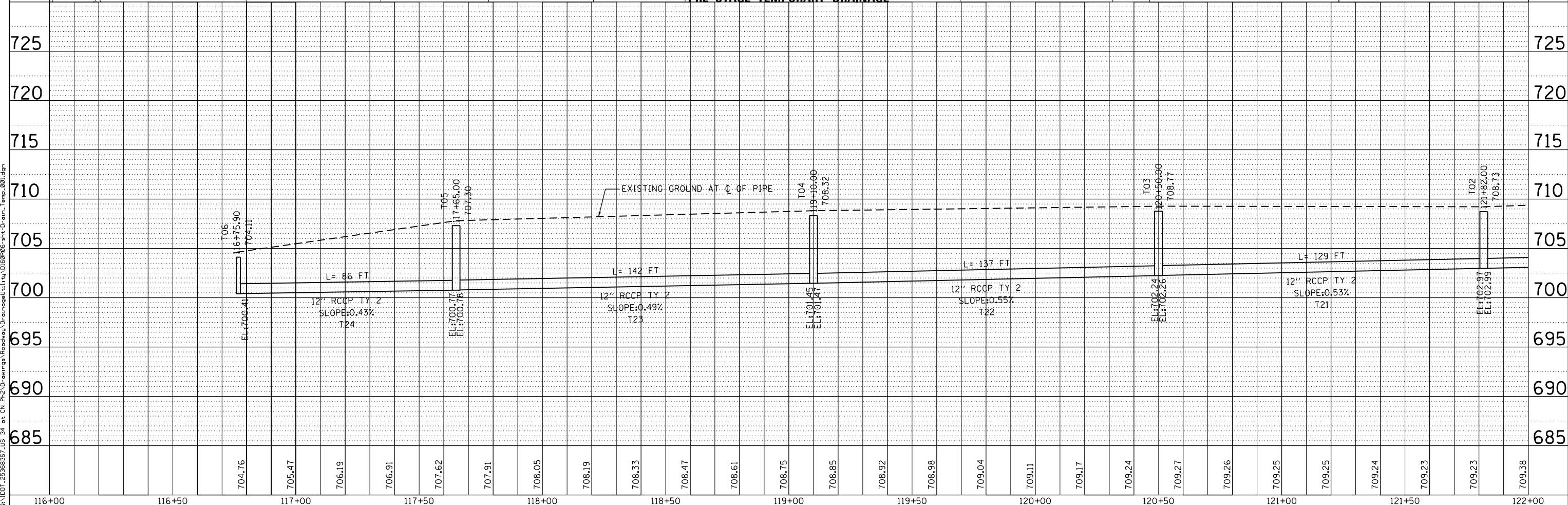
DATE	
BY	
PLAN	SURVEYED
	NOTED
	CHECKED
	ALIGNED
	DESIGNED
	FILED
	NO.
	NO.

DATE	
BY	
PROFILE	SURVEYED
	NOTED
	CHECKED
	GRADES
	STRUCTURE
	NOT AT THIS OFFICE
	NO.
	NO.



THE COST TO PLUG EXISTING PIPE CONNECTIONS SHALL BE INCLUDED IN THE COST OF THE TEMPORARY PIPE

THE COST TO CONNECT THE EXISTING STORM SEWER TO THE TEMPORARY STRUCTURE WILL BE INCLUDED IN THE COST OF THE TEMPORARY MANHOLE.



116+00	116+50	117+00	117+50	118+00	118+50	119+00	119+50	120+00	120+50	121+00	121+50	122+00													
704.76	705.47	706.19	706.91	707.62	707.91	708.05	708.19	708.33	708.47	708.61	708.75	708.85	708.92	708.98	709.04	709.11	709.17	709.24	709.27	709.26	709.25	709.24	709.23	709.23	709.38



USER NAME = URS	DESIGNED - MB	REVISED -
DRAWN - KJB	REVISED -	
CHECKED - SPF	REVISED -	
DATE - 02/28/2014	REVISED -	

STATE OF ILLINOIS  
DEPARTMENT OF TRANSPORTATION

TEMPORARY DRAINAGE PLAN

SCALE: 20 SHEET NO. 1 OF 3 SHEETS STA. 116+00 TO STA. 122+00

F.A.P. RTE.	SECTION	COUNTY	TOTAL SHEETS	SHEET NO.
311	652-A	DuPAGE	383	64
CONTRACT NO. 60R06			ILLINOIS FED. AID PROJECT	