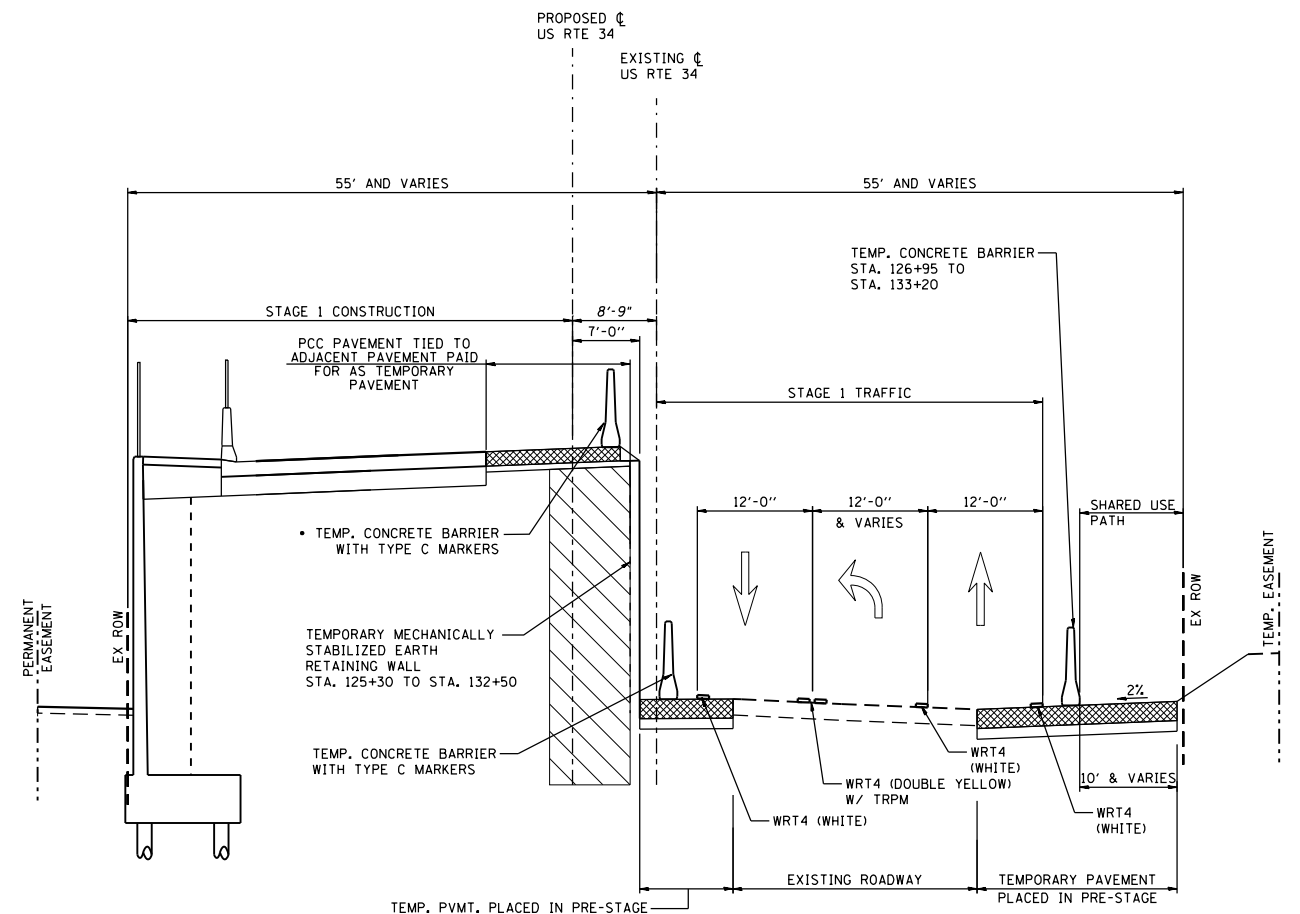
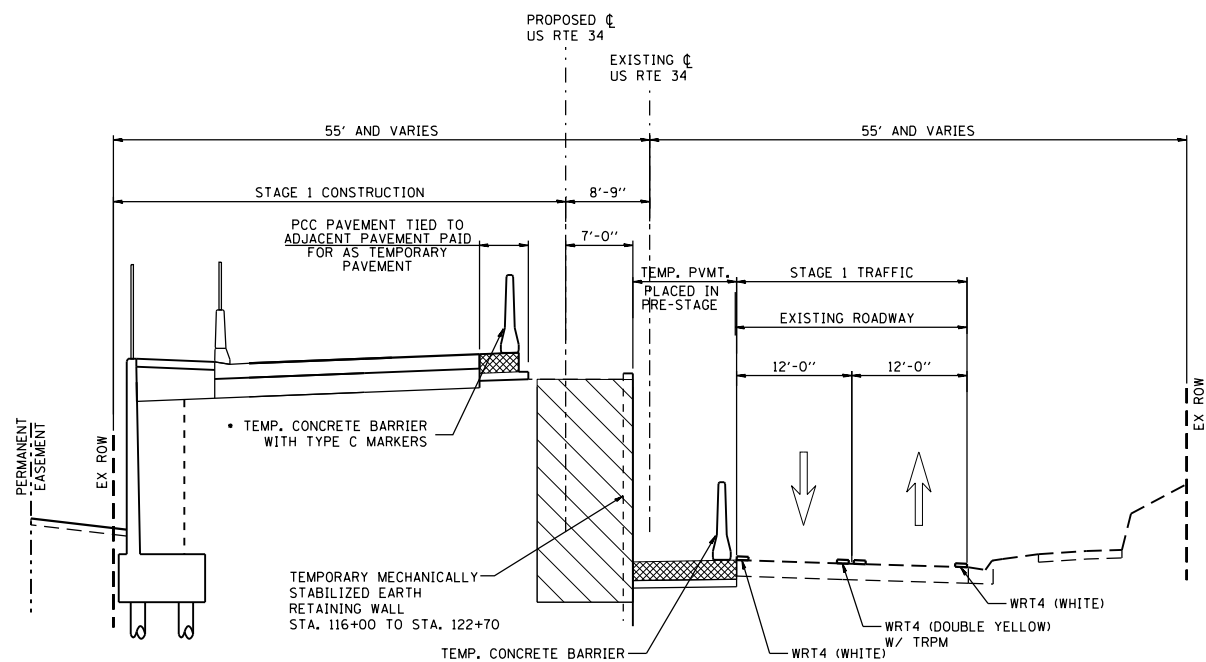


US ROUTE 34 - STAGE 1
US ROUTE 34
STA 101+50 TO STA 116+00



US ROUTE 34 - STAGE 1

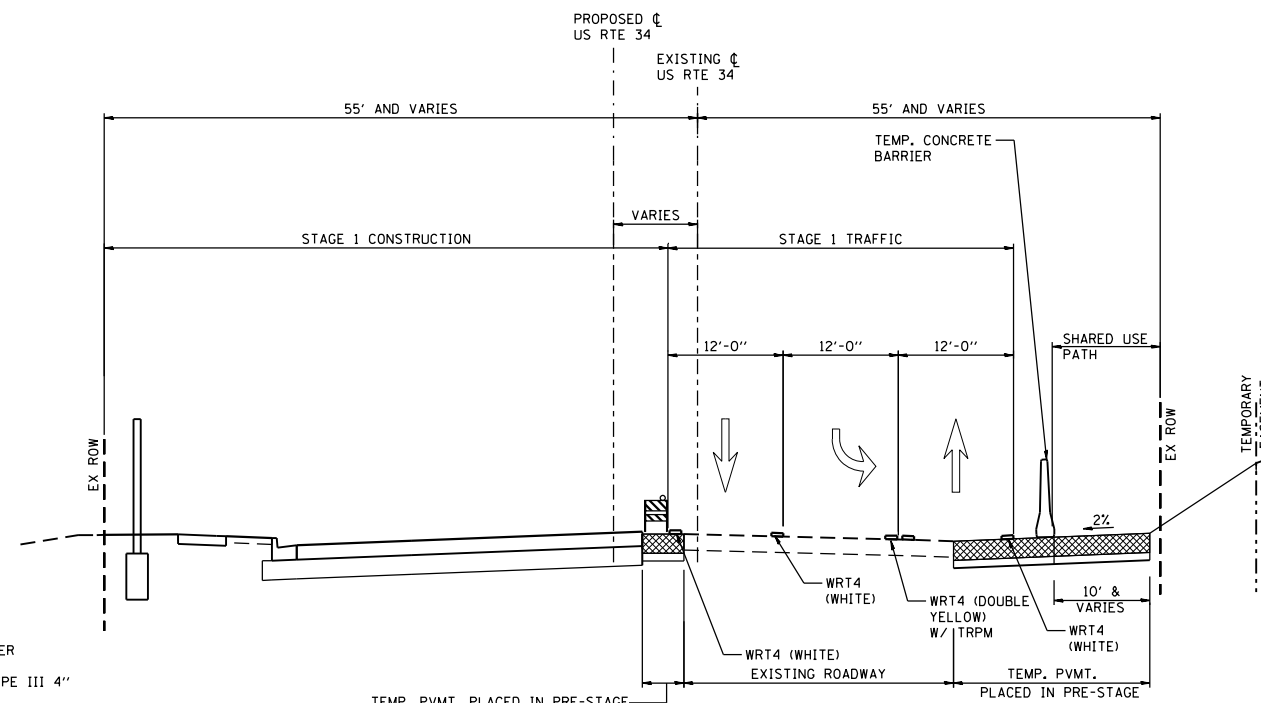
US ROUTE 34
STA 125+65 TO STA 134+00
TEMPORARY CONCRETE BARRIER CONTINUOUSLY PINNED TO TEMPORARY PAVEMENT ALONG THE TRAFFIC SIDE



US ROUTE 34 - STAGE 1

US ROUTE 34
STA 116+00 TO STA 125+65
TEMPORARY CONCRETE BARRIER CONTINUOUSLY PINNED TO TEMPORARY PAVEMENT ALONG THE TRAFFIC SIDE

- LEGEND**
- TRPM = TEMPORARY RAISED REFLECTIVE PAVEMENT MARKER
 - WRT4 = WET REFLECTIVE TEMPORARY PAVEMENT TAPE TYPE III 4"
 - E4 = EPOXY PAVEMENT MARKING LINE 4"
 - [Hatched Box] = TEMPORARY PAVEMENT



US ROUTE 34 - STAGE 1

US ROUTE 34
STA 134+00 TO STA. 141+20



USER NAME = URS	DESIGNED - MB	REVISED -
PLOT SCALE = 20.0000' / in.	DRAWN - KJB	REVISED -
PLOT DATE = 02/28/2014	CHECKED - SPF	REVISED -
	DATE - 02/28/2014	REVISED -

STATE OF ILLINOIS
DEPARTMENT OF TRANSPORTATION

PROPOSED TYPICAL SECTION - STAGE 1

SCALE: SHEET NO. OF SHEETS STA. TO STA.

F.A.P. RTE.	SECTION	COUNTY	TOTAL SHEETS	SHEET NO.
311	652-A	DUPAGE	383	69
CONTRACT NO. 60R06				
FED. ROAD DIST. NO. 1 ILLINOIS FED. AID PROJECT				

FILE NAME = Q:\1001_25368367_US 34.ctb CN P:\2\Drawings\Roadway\DOT\1160R06-Sh+Staging_Typical Section_Ldgn