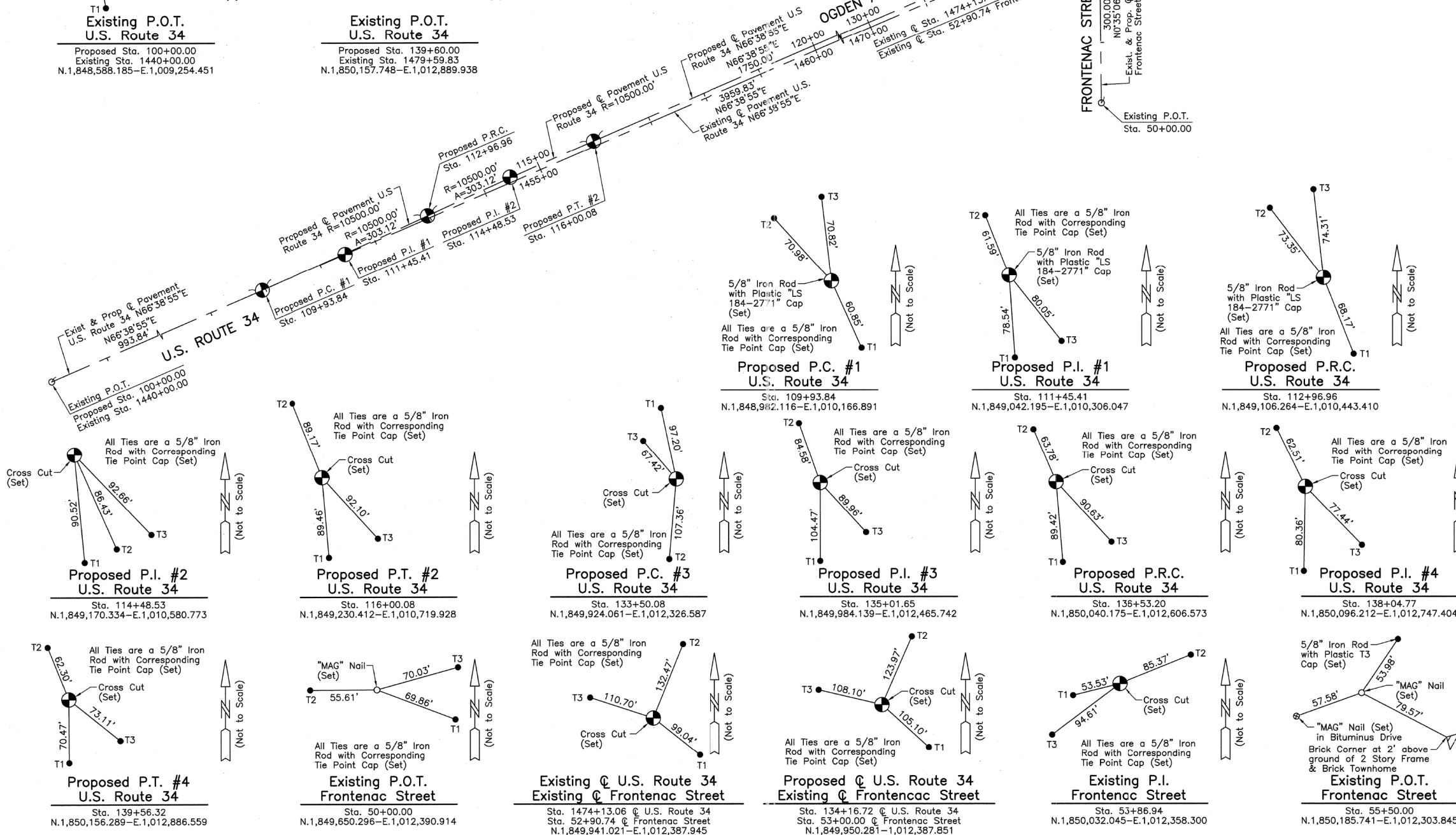
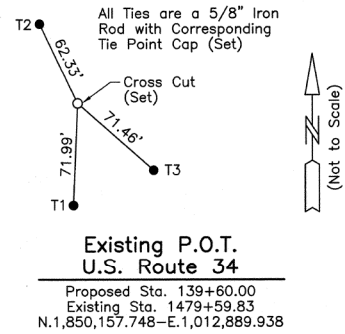
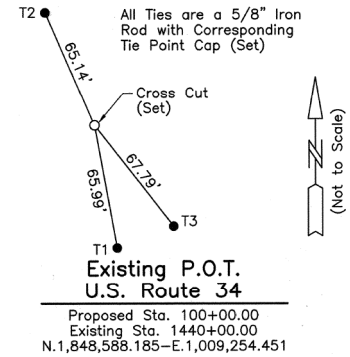


Proposed Pavement U.S. Route 34 Curve #1	Proposed Pavement U.S. Route 34 Curve #2	Proposed Pavement U.S. Route 34 Curve #3	Proposed Pavement U.S. Route 34 Curve #4
P.I. = Sta. 111+45.41	P.I. = Sta. 114+48.53	P.I. = Sta. 135+01.65	P.I. = Sta. 138+04.77
Δ = 1°39'15"	Δ = 1°39'15"	Δ = 1°39'15"	Δ = 1°39'15"
R = 10500.00'	R = 10500.00'	R = 10500.00'	R = 10500.00'
T = 151.57'	T = 151.57'	T = 151.57'	T = 151.57'
L = 303.12'	L = 303.12'	L = 303.12'	L = 303.12'
E = 1.09'	E = 1.09'	E = 1.09'	E = 1.09'
P.C. = Sta. 109+93.84	P.R.C. = Sta. 112+96.96	P.C. = Sta. 133+50.08	P.R.C. = Sta. 136+53.20
P.R.C. = Sta. 112+96.96	P.T. = Sta. 116+00.08	P.R.C. = Sta. 136+53.20	P.T. = Sta. 139+56.32



LEGEND

- SECTION CORNER (910/1615)
- QUARTER SECTION CORNER (16)
- SECTION LINE
- QUARTER SECTION LINE
- QUARTER, QUARTER SECTION LINE
- PLATTED LOT LINE
- PROPERTY (DEED) LINE
- APL
- APPARENT PROPERTY LINE
- CENTER LINE
- EXISTING RIGHT OF WAY LINE
- PROPOSED RIGHT OF WAY LINE
- PROPOSED EASEMENT
- MEASURED DIMENSION
- COMPUTED DIMENSION
- RECORD DATA
- EXISTING BUILDING

Bearings and Coordinates are referenced to the Illinois Coordinate System NAD 83(2007) East Zone.

STATE OF ILLINOIS }
 COUNTY OF LAKE } SS

THIS IS TO CERTIFY THAT WE, JORGENSEN & ASSOCIATES, INC., AN ILLINOIS PROFESSIONAL DESIGN FIRM, LAND SURVEYING CORPORATION, NUMBER 184-2771, HAVE SURVEYED THE PLAT OF HIGHWAYS SHOWN HEREON IN SECTION 29, TOWNSHIP 38N., RANGE 9E., OF THE THIRD PRINCIPAL MERIDIAN, DuPAGE COUNTY, THAT THE SURVEY IS TRUE AND COMPLETE AS SHOWN TO THE BEST OF MY KNOWLEDGE AND BELIEF, THAT THE PLAT CORRECTLY REPRESENTS SAID SURVEY, THAT ALL MONUMENTS FOUND AND ESTABLISHED ARE OF PERMANENT QUALITY AND OCCUPY THE POSITIONS SHOWN THEREON AND THAT THE MONUMENTS ARE SUFFICIENT TO ENABLE THE SURVEY TO BE RE-TRACED. MADE FOR THE DEPARTMENT OF TRANSPORTATION, STATE OF ILLINOIS.

DATED AT LAKE VILLA, ILLINOIS THIS 23RD DAY OF October 2012 A.D.

CHRISTIAN H. JORGENSEN
 2797 PROFESSIONAL LAND SURVEYOR
 STATE OF ILLINOIS
 LAKE VILLA, ILLINOIS

RECEIVED
 NOV 09 2012
 PLATS & LEGALS

JORGENSEN & ASSOCIATES, INC.
 120 PARK AVENUE
 LAKE VILLA, ILLINOIS 60046
 (847) 356-3371

SHEET 1 IS A COVER SHEET AND IS NOT RECORDED.

PLAT OF HIGHWAYS
 STATE OF ILLINOIS
 DEPARTMENT OF TRANSPORTATION
 F.A.P. 311 (U.S. ROUTE 34)

SECTION 652-A DuPAGE COUNTY
 PROJECT JOB NO. R-91-014-11
 STATION 50+00.00 TO STATION 55+50.00
 STATION 100+00.00 TO STATION 139+60.00
 STATION 1440+00.00 TO STATION 1479+59.83
 SCALE: 1"=100' SHEET 17 OF 18

BUREAU OF LAND ACQUISITION
 201 WEST CENTER COURT
 SCHAUMBURG, ILLINOIS 60196

REVISION DATE REVISION MADE BY

ROUTE F.A.P. 311 (U.S. ROUTE 34) SECTION 652-A COUNTY DuPAGE JOB NO. R-91-014-11 RECORDING: RECORDED ON AS DOCUMENT NO.