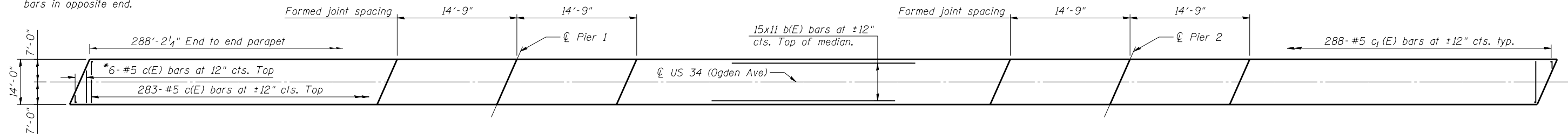


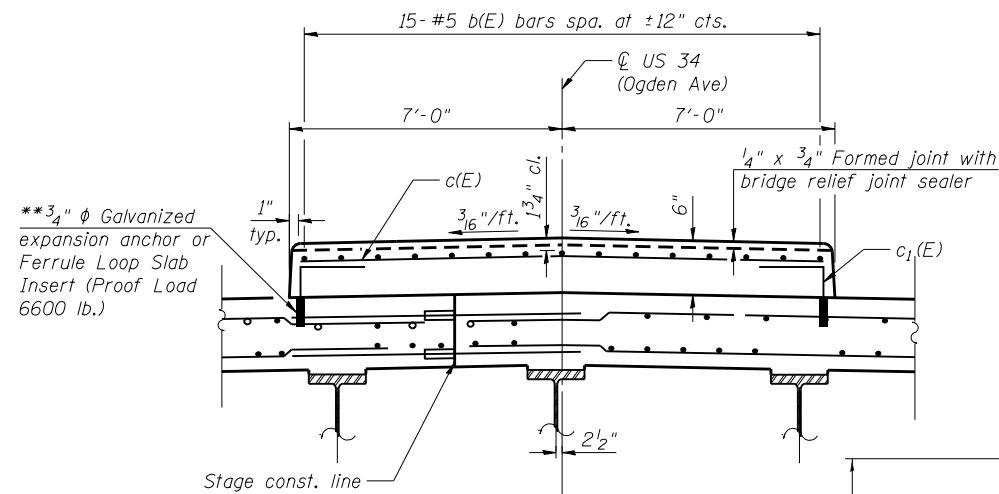
**INSIDE ELEVATION OF PARAPET**  
(All spacings are relative to front face of parapet)

**MINIMUM BAR LAP**  
(Parapet)  
#4 bar = 2'-0"  
#8 bar = 5'-2"

\*Order c(E) bars full length. Cut to fit skew and use remainder of bars in opposite end.



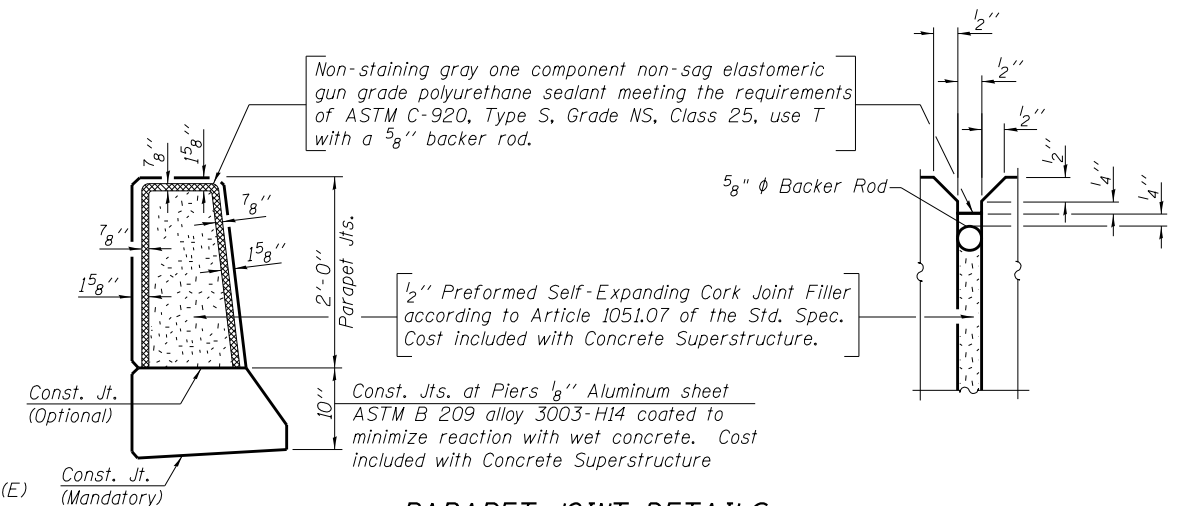
**RAISED CURB MEDIAN PLAN**



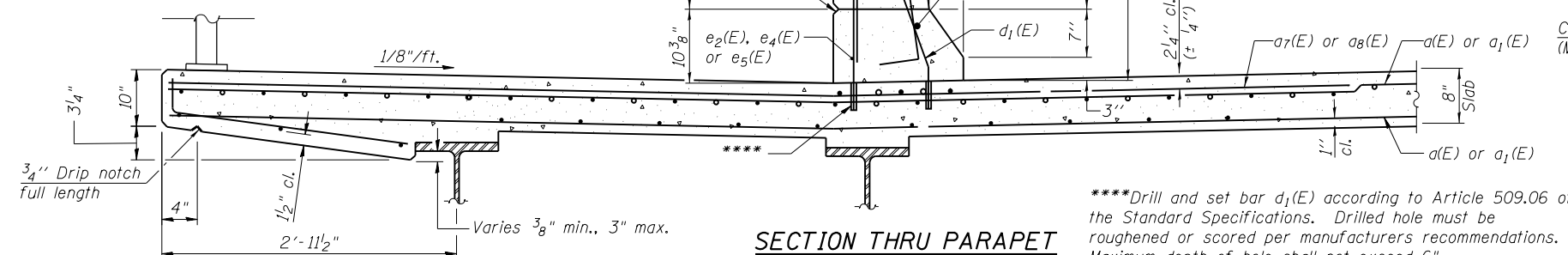
**RAISED CURB MEDIAN SECTION**

\*\*3/4 inch diameter Galvanized expansion anchor or Ferrule Loop Slab Insert (Proof Load 6600 lb.)

\*\*Cost of expansion anchors/inserts is included in the cost of Reinforcement Bars. Epoxy Coated



**PARAPET JOINT DETAILS**



**SECTION THRU PARAPET**

\*\*\*\*Drill and set bar d<sub>1</sub>(E) according to Article 509.06 of the Standard Specifications. Drilled hole must be roughened or scored per manufacturers recommendations. Maximum depth of hole shall not exceed 6".

note: See Sheet S-18 for Bill of Material and bar bending diagrams.



USER NAME =	DESIGNED - BAR	REVISIONS
	CHECKED - NPP	REVISIONS
PLOT SCALE =	DRAWN - BAR	REVISIONS
PLOT DATE = 03/19/2014	CHECKED - NPP	REVISIONS

STATE OF ILLINOIS  
DEPARTMENT OF TRANSPORTATION

PARAPET ELEVATIONS AND DETAILS  
STRUCTURE NO. 022-0512

SHEET NO. S-17 OF S-53 SHEETS

F.A.P. RTE.	SECTION	COUNTY	TOTAL SHEETS	SHEET NO.
311	652-A	DuPAGE	383	180
CONTRACT NO. 60R06				
ILLINOIS FED. AID PROJECT				