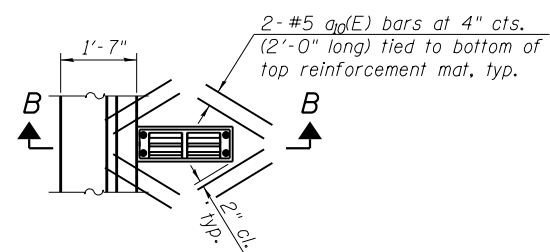
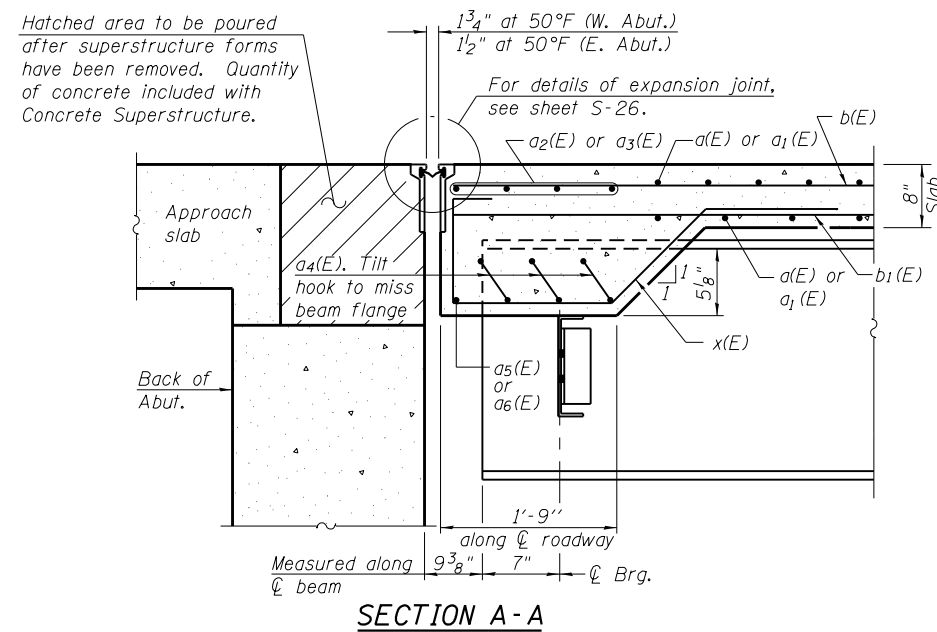


**SECTION B-B**

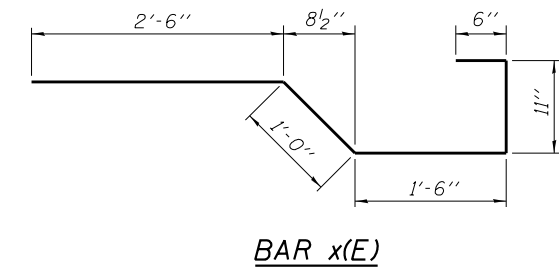
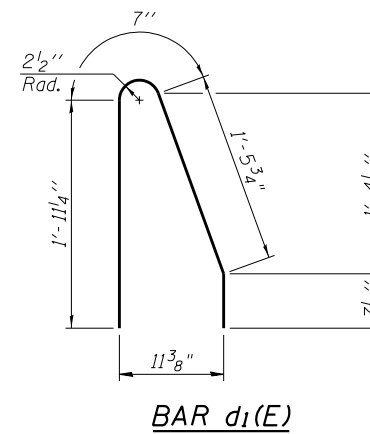
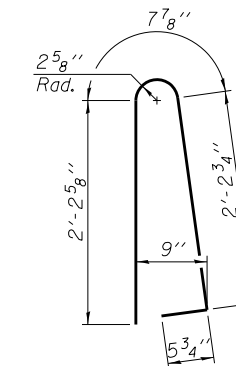
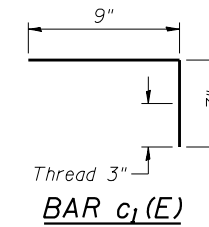
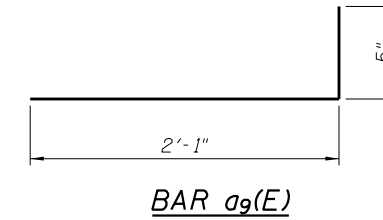
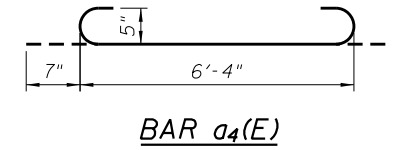


**DETAIL 1 - PLAN**

Note:  
Cut longitudinal reinforcement to  
clear drainage scuppers.



**SECTION A-A**



**SUPERSTRUCTURE  
BILL OF MATERIAL**

Bar	No.	Size	Length	Shape
a(E)	842	#5	42'-10"	—
a <sub>1</sub> (E)	842	#5	53'-6"	—
a <sub>2</sub> (E)	8	#5	46'-11"	—
a <sub>3</sub> (E)	8	#5	58'-7"	—
a <sub>4</sub> (E)	84	#5	7'-6"	U
a <sub>5</sub> (E)	2	#5	55'-7"	—
a <sub>6</sub> (E)	2	#5	43'-5"	—
a <sub>7</sub> (E)	483	#6	15'-9"	—
a <sub>8</sub> (E)	479	#6	21'-5"	—
a <sub>9</sub> (E)	578	#5	2'-6"	U
a <sub>10</sub> (E)	48	#5	2'-0"	—
b(E)	1232	#5	29'-2"	—
b <sub>1</sub> (E)	972	#5	27'-0"	—
b <sub>2</sub> (E)	190	#6	53'-10"	—
c(E)	289	#5	13'-6"	—
c <sub>1</sub> (E)	576	#5	1'-4"	L
d(E)	630	#5	5'-7"	U
d <sub>1</sub> (E)	630	#5	4'-7 1/2"	U
e(E)	28	#4	19'-7"	—
e <sub>1</sub> (E)	84	#4	19'-4"	—
e <sub>2</sub> (E)	64	#4	14'-5"	—
e <sub>3</sub> (E)	56	#4	17'-6"	—
e <sub>4</sub> (E)	12	#4	27'-7"	—
e <sub>5</sub> (E)	4	#4	36'-6"	—
e <sub>6</sub> (E)	8	#8	41'-11"	—
e <sub>7</sub> (E)	8	#8	14'-5"	—
e <sub>8</sub> (E)	4	#8	38'-1"	—
x(E)	150	#5	6'-5"	U
Reinforcement Bars, Epoxy Coated			Pound	212,240
Concrete Superstructure			Cu. Yds.	918.8

Bars indicated thus 1 x 7 - #8 etc. indicates  
1 line of bars with 7 lengths per line.



USER NAME =	DESIGNED - BAR	REVISED
	CHECKED - AMK	REVISED
PLOT SCALE =	DRAWN - BAR	REVISED
PLOT DATE = 02/28/2014	CHECKED - AMK	REVISED

STATE OF ILLINOIS  
DEPARTMENT OF TRANSPORTATION

DECK DETAILS  
STRUCTURE NO. 022-0512

SHEET NO. S-18 OF S-53 SHEETS

F.A.P. RTE.	SECTION	COUNTY	TOTAL SHEETS	SHEET NO.
311	652-A	DuPAGE	383	181
			CONTRACT NO. 60R06	
ILLINOIS FED. AID PROJECT				