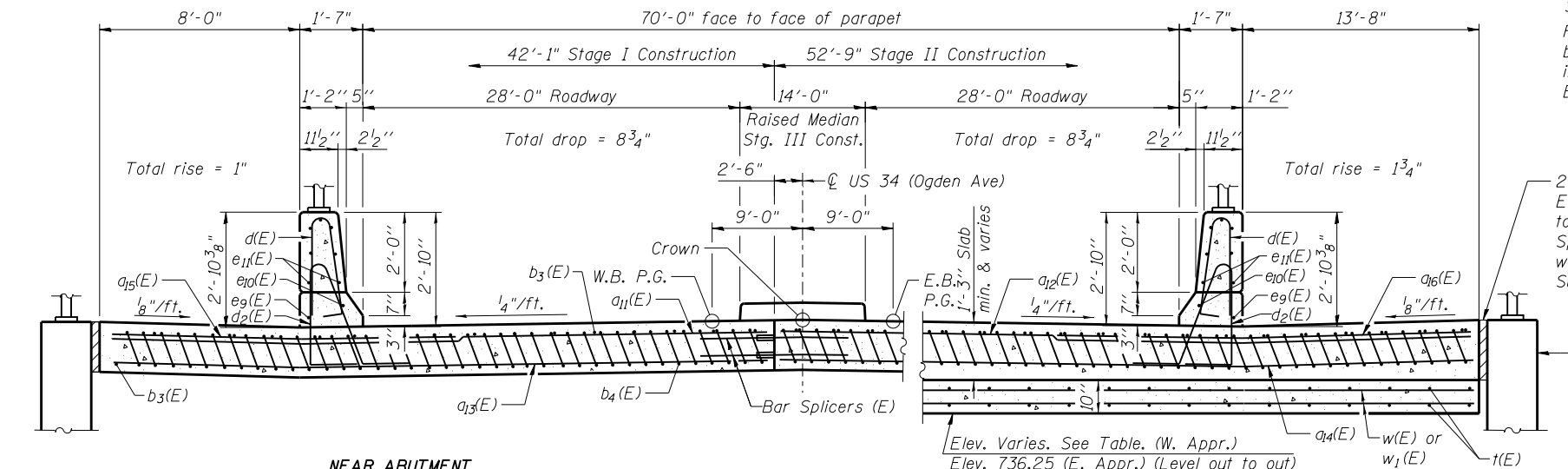
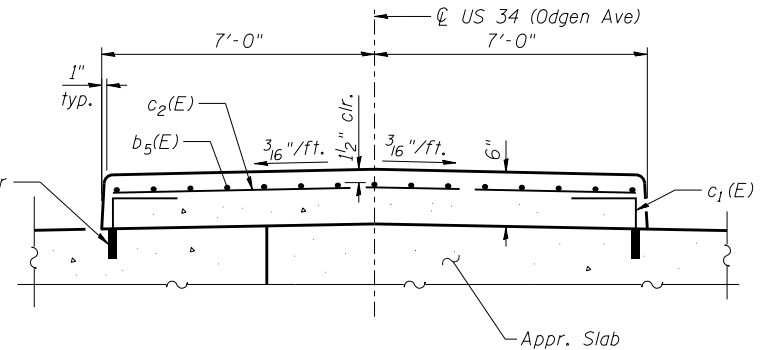


SECTION C-C

Notes:
 See sheet S-19 of S-53 for Detail A and View B-B.
 Approach slab and parapet concrete shall be paid for as Concrete Superstructure.
 Approach footing concrete shall be paid for as Concrete Structures.
 Reinforcement shall be paid for as Reinforcement Bars, Epoxy Coated.
 For $v_{16}(E)$ or $v_{17}(E)$ bar details, see sheets S-33 or S-36 of S-53.
 The approach footing maximum applied service bearing pressure (Q_{max}) = 2.0 ksf.
 For bar splicer details, see sheet S-42 of S-53.
 Cost of excavation for approach footing included with Concrete Structures.
 For Granular Backfill for Structures and drainage treatment details, see sheet S-37 of S-53.
 For additional parapet details, see sheet S-17 of S-53.

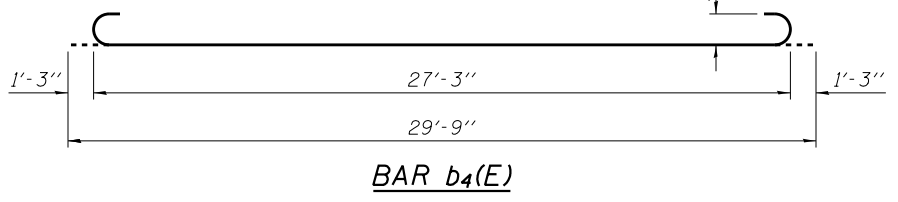


SECTION D-D



SECTION THROUGH APPR. SLAB MEDIAN

2" Preformed Flexible Foam Expansion Joint Filler according to Article 1051.09 of the Std. Specifications. Typical at each wall. Cost included with Concrete Superstructure.

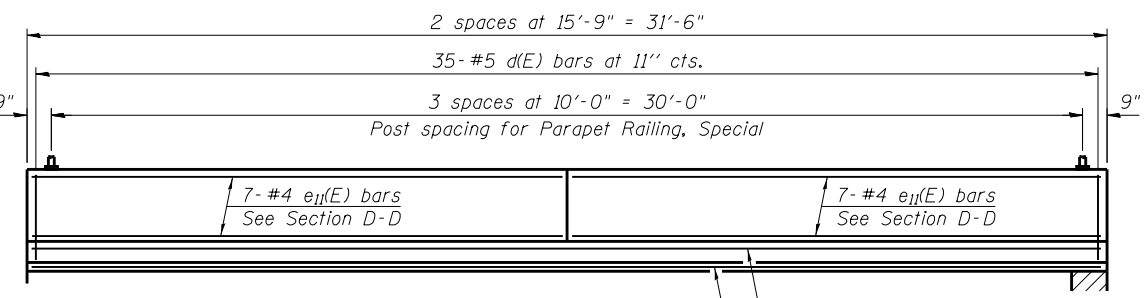


BAR b4(E)

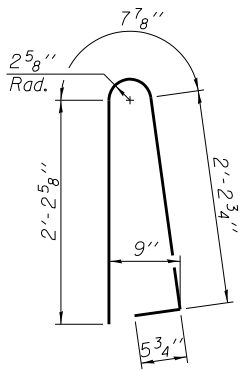
* Tilt #9 $b_4(E)$ bars as required to maintain clearance.
 *** Cost included with Concrete Superstructure.

WEST APPROACH SLAB FOOTING ELEVATIONS

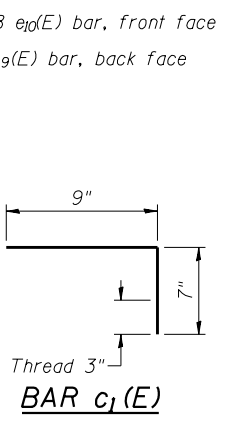
Location	Elevation
North Edge	733.37
Stage Construction Line	733.68
US 34 / Crown	733.70
South Edge	731.93



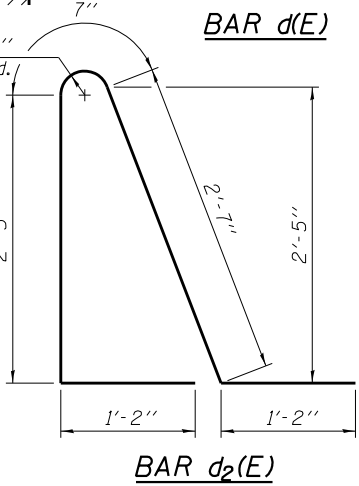
VIEW E-E



BAR d(E)



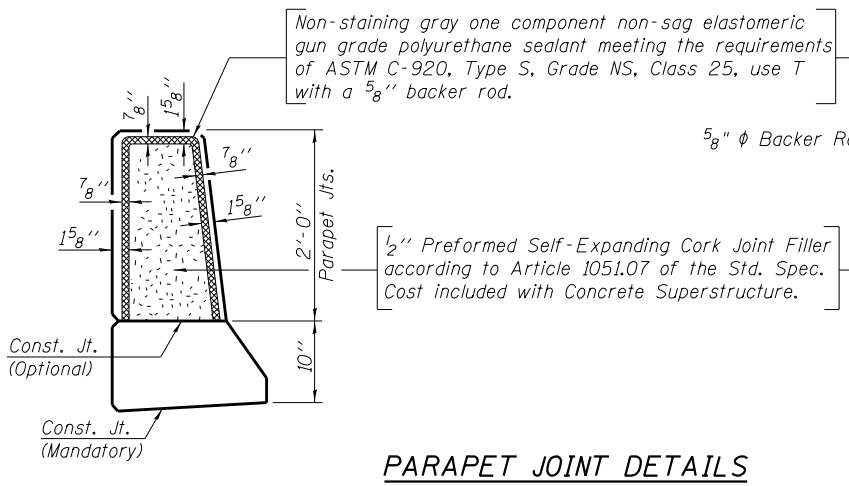
BAR c1(E)



BAR d2(E)

TWO APPROACHES BILL OF MATERIAL

Bar	No.	Size	Length	Shape
$a_{11}(E)$	50	#4	45'-8"	—
$a_{12}(E)$	50	#4	57'-4"	—
$a_{13}(E)$	92	#5	45'-8"	—
$a_{14}(E)$	92	#5	57'-4"	—
$a_{15}(E)$	50	#6	15'-3"	—
$a_{16}(E)$	50	#6	21'-6"	—
$b_3(E)$	160	#4	29'-7"	—
$b_4(E)$	456	#9	29'-9"	—
$b_5(E)$	30	#5	31'-2"	—
$c_1(E)$	128	#5	1'-4"	—
$c_2(E)$	64	#5	14'-11"	—
$d(E)$	140	#5	5'-7"	—
$d_2(E)$	136	#5	7'-11"	—
$e_9(E)$	4	#4	31'-2"	—
$e_{10}(E)$	4	#8	31'-2"	—
$e_{11}(E)$	56	#4	15'-5"	—
$t(E)$	388	#4	10'-7"	—
$w(E)$	80	#5	45'-8"	—
$w_1(E)$	80	#5	57'-4"	—
Concrete Superstructure		Cu. Yd.	309.9	
Concrete Structures		Cu. Yd.	64.1	
Reinforcement Bars, Epoxy Coated		Pound	81,790	



PARAPET JOINT DETAILS



USER NAME =	DESIGNED - BAR	REVISED
PLOT SCALE =	CHECKED - AMK	REVISED
PLOT DATE = 02/28/2014	DRAWN - BAR	REVISED
	CHECKED - AMK	REVISED

STATE OF ILLINOIS
 DEPARTMENT OF TRANSPORTATION

BRIDGE APPROACH SLAB DETAILS 2
 STRUCTURE NO. 022-0512

SHEET NO. S-20 OF S-53 SHEETS

F.A.P. RTE. 311	SECTION 652-A	COUNTY DuPAGE	TOTAL SHEETS 383	SHEET NO. 183
CONTRACT NO. 60R06			ILLINOIS FED. AID PROJECT	