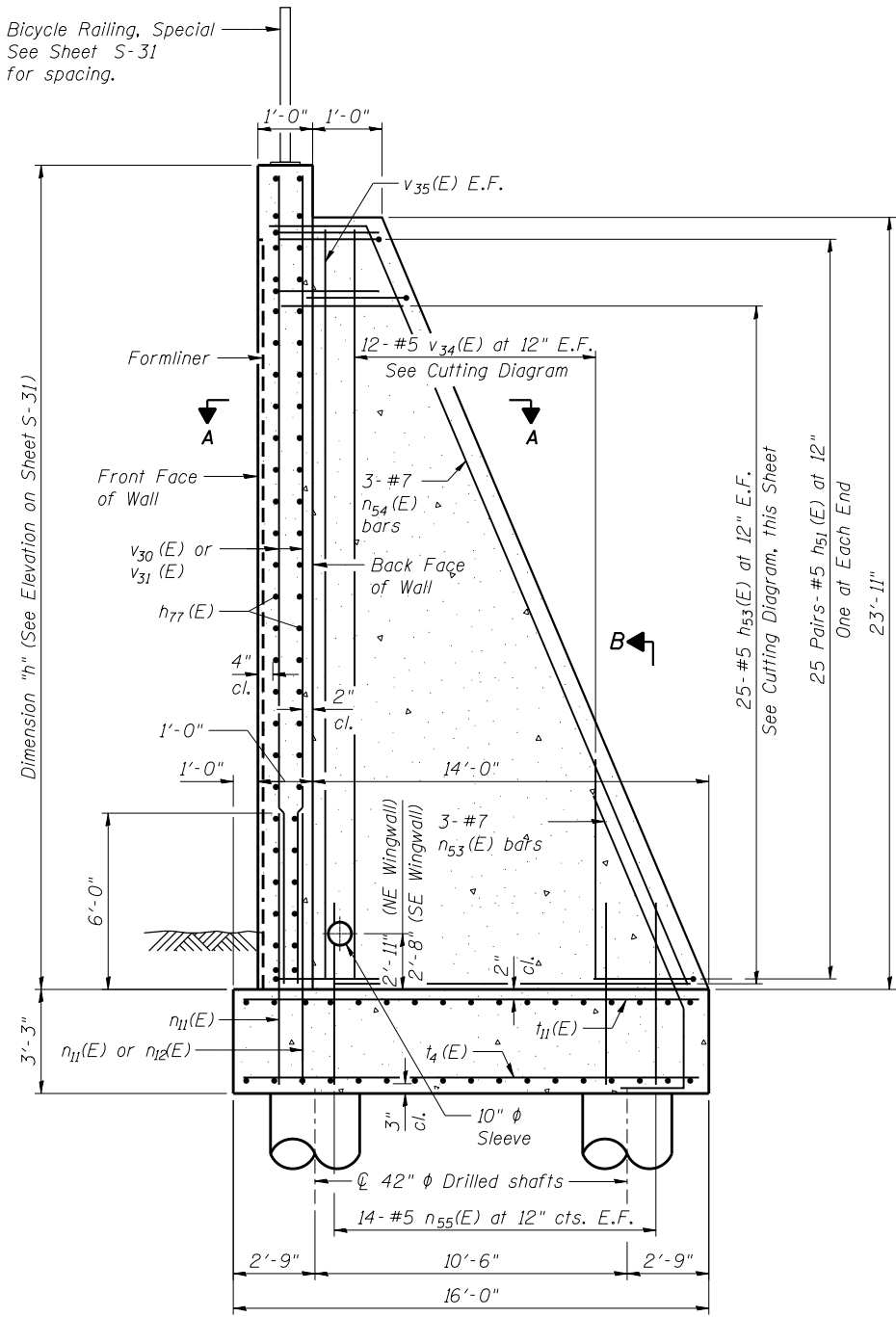
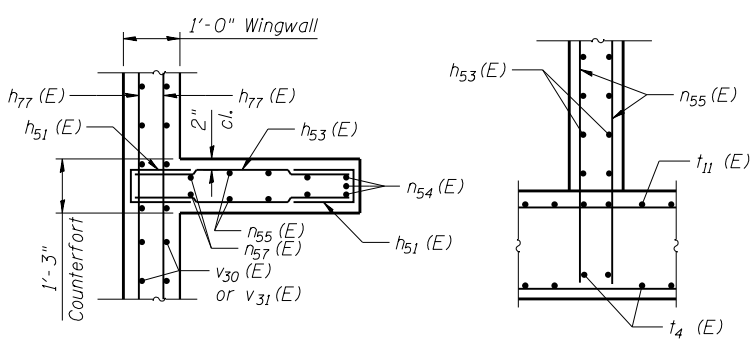


Bicycle Railing, Special
See Sheet S-31
for spacing.

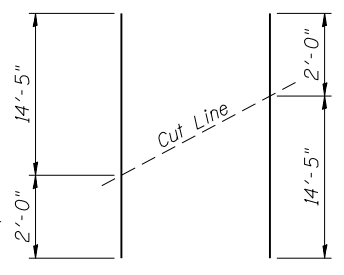


WINGWALL SECTION

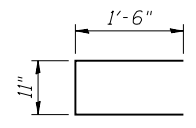


SECTION A-A

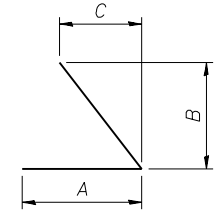
SECTION B-B



BAR h53(E)

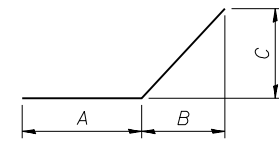


BAR h51(E)



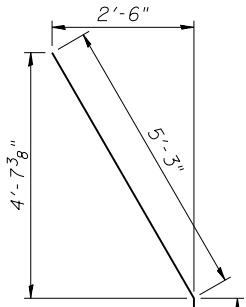
BAR h71(E), h74(E), h76(E)

Bar	A	B	C
h71(E)	3'-3"	1'-0"	5 1/2"
h74(E)	2'-7"	1'-3 3/4"	2'-11 5/8"
h76(E)	2'-7"	5'-8 1/4"	2'-6 1/4"

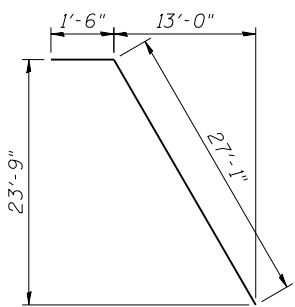


BAR h70(E), h73(E), h75(E)

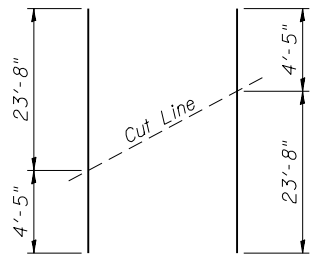
Bar	A	B	C
h70(E)	3'-3"	4 1/2"	10 1/4"
h73(E)	2'-7"	1'-0"	2'-3"
h75(E)	2'-7"	2'-2 3/4"	5'-0"



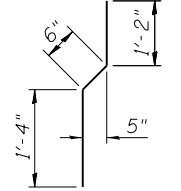
BAR n53(E)



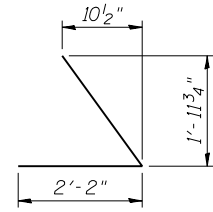
BAR n54(E)



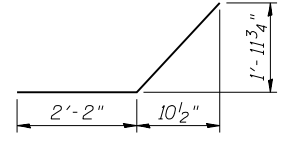
BAR v34(E)



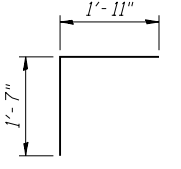
BAR v12(E)



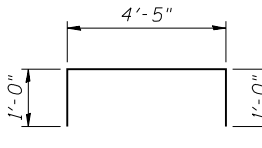
BAR w13(E)



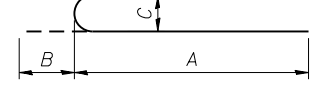
BAR w12(E)



BAR v17(E)

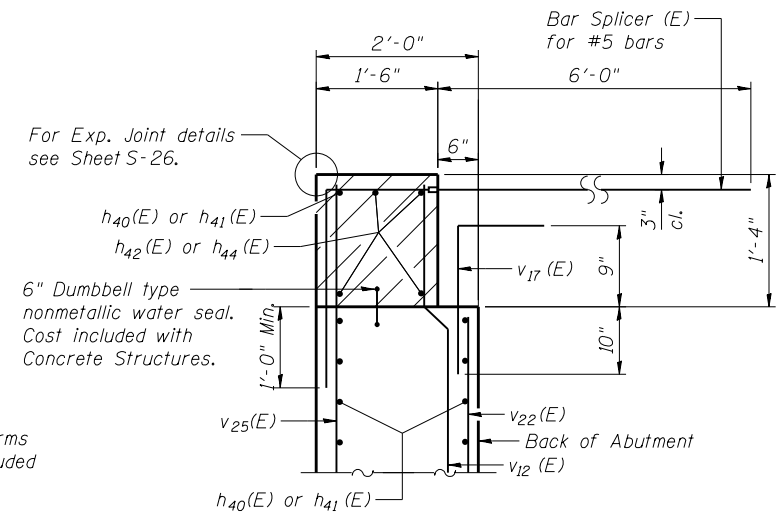


BAR v15(E)



BARS n10(E), n11(E) & n40(E)

Bar	A	B	C
n10(E)	8'-2"	11"	8"
n11(E)	5'-11"	7"	5"
n40(E)	8'-6"	1'-3"	11 3/4"



DETAIL "A"

BILL OF MATERIALS - WEST ABUTMENT

Bar	No.	Size	Length	Shape
d2(E)	4	#5	7'-11"	—
h40(E)	78	#5	28'-4"	—
h41(E)	76	#5	30'-0"	—
h42(E)	8	#6	28'-6"	—
h44(E)	8	#6	30'-2"	—
h45(E)	18	#4	25'-6"	—
h46(E)	18	#4	29'-8"	—
h47(E)	4	#5	22'-3"	—
h48(E)	4	#5	9'-0"	—
h49(E)	4	#5	3'-8"	—
h51(E)	300	#5	3'-11"	—
h53(E)	144	#5	16'-5"	—
h70(E)	29	#5	4'-2"	—
h71(E)	29	#5	4'-4"	—
h73(E)	4	#5	5'-1"	—
h74(E)	4	#5	5'-10"	—
h75(E)	25	#5	8'-1"	—
h76(E)	25	#5	8'-11"	—
h77(E)	114	#5	28'-1"	—
h78(E)	6	#5	0'-9"	—
h79(E)	6	#5	1'-3"	—
n10(E)	214	#8	9'-1"	—
n11(E)	118	#5	9'-0"	—
n12(E)	46	#5	9'-0"	—
n40(E)	312	#9	9'-9"	—
n53(E)	18	#7	9'-5"	—
n54(E)	18	#7	28'-7"	—
n55(E)	168	#5	5'-3"	—

** SP42 18 #4 32'-3"

** SP43 21 #4 26'-5"

** SP41 22 #4 25'-2"

t3(E)	244	#7	15'-8"	—
t4(E)	170	#5	15'-8"	—
t11(E)	87	#9	15'-8"	—
v12(E)	108	#4	3'-0"	—
v15(E)	148	#5	6'-5"	—
v17(E)	106	#5	3'-6"	—
v20(E)	96	#7	23'-1"	—
v21(E)	113	#7	22'-3"	—
v22(E)	110	#5	5'-8"	—
v23(E)	22	#4	23'-8"	—
v24(E)	23	#4	22'-10"	—
v25(E)	108	#5	5'-11"	—
v30(E)	58	#5	26'-1"	—
v31(E)	58	#5	27'-4"	—
v34(E)	72	#5	28'-1"	—
v35(E)	12	#5	23'-7"	—
v42	234	#9	35'-2"	—
v43	273	#9	29'-4"	—
v41	286	#9	27'-3"	—
v80(E)	8	#4	6'-11"	—

w12(E)	2	#5	4'-4"	—
w13(E)	2	#5	4'-4"	—
w14(E)	68	#5	29'-2"	—
w15(E)	68	#5	27'-7"	—
w16(E)	124	#5	25'-0"	—
Structure Excavation	Cu. Yd.	429		
Concrete Structures	Cu. Yd.	770.9		
Reinforcement Bars	Pounds	100,990		
Reinforcement Bars, Epoxy Coated	Pounds	74,870		

** Length is height of spiral.
Minimum lap for spirals is 2'-0"

NOTES

- Hatched area to be poured after superstructure forms have been removed. Quantity of concrete to be included with "Concrete Superstructure".
- E.F. denotes Each Face
- See Sheet S-20 for d(E) bar details.



USER NAME =	DESIGNED - KMP	REVISED
	CHECKED - STB	REVISED
PLOT SCALE =	DRAWN - KMP	REVISED
PLOT DATE = 03/19/2014	CHECKED - STB	REVISED

STATE OF ILLINOIS
DEPARTMENT OF TRANSPORTATION

WEST ABUTMENT DETAILS
STRUCTURE NO. 022-0512

SHEET NO. S-33 OF S-53 SHEETS

F.A.P. RT.E.	SECTION	COUNTY	TOTAL SHEETS	SHEET NO.
311	652-A	DuPAGE	383	196
			CONTRACT NO. 60R06	
ILLINOIS FED. AID PROJECT				