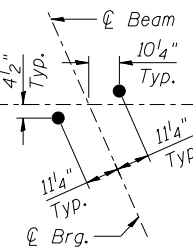


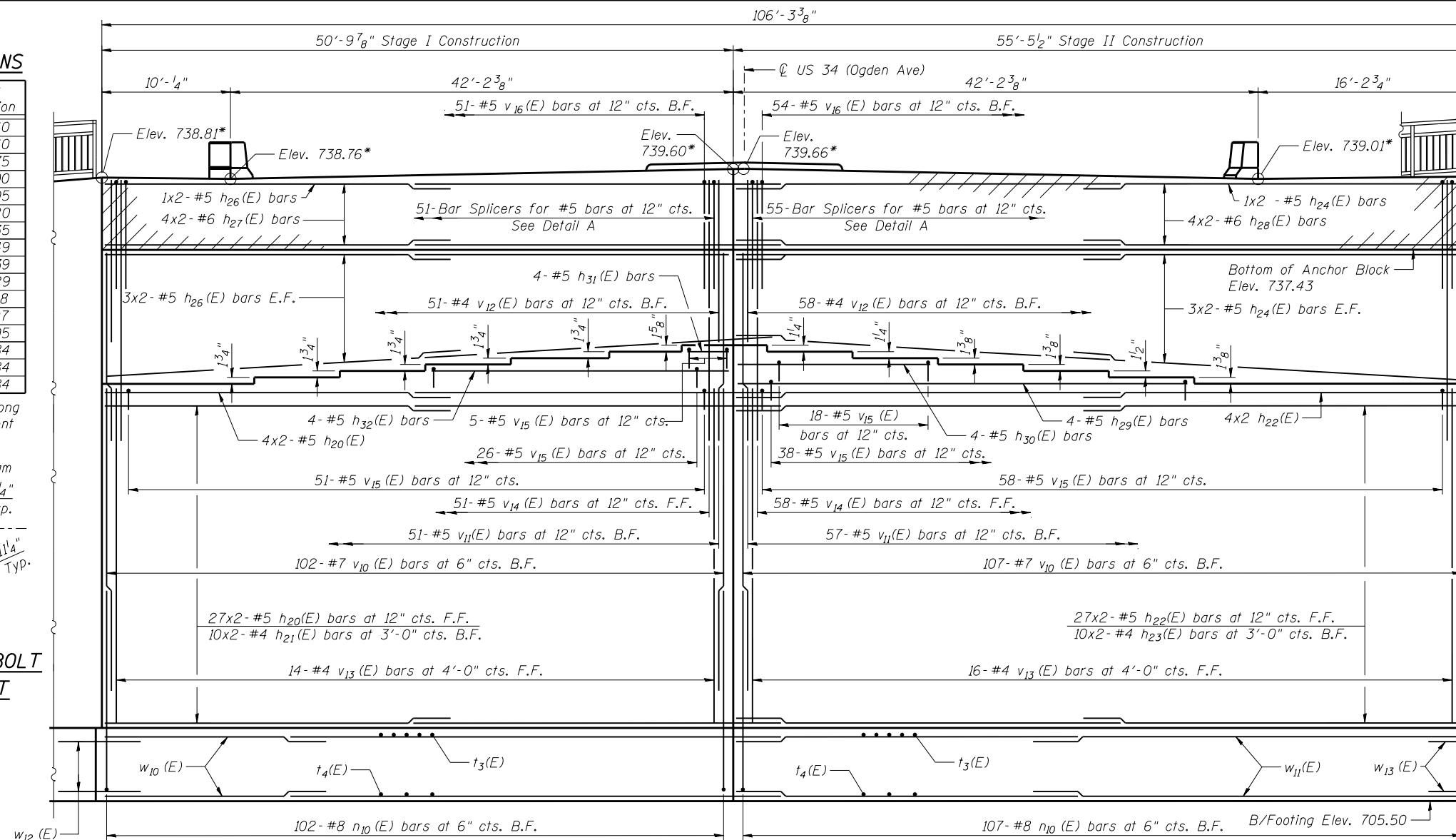
SEAT ELEVATIONS

Beam Line	Seat Elevation
1	734.60
2	734.60
3	734.75
4	734.90
5	735.05
6	735.20
7	735.35
8	735.49
9	735.39
10	735.29
11	735.18
12	735.07
13	734.95
14	734.84
15	734.84
16	734.84

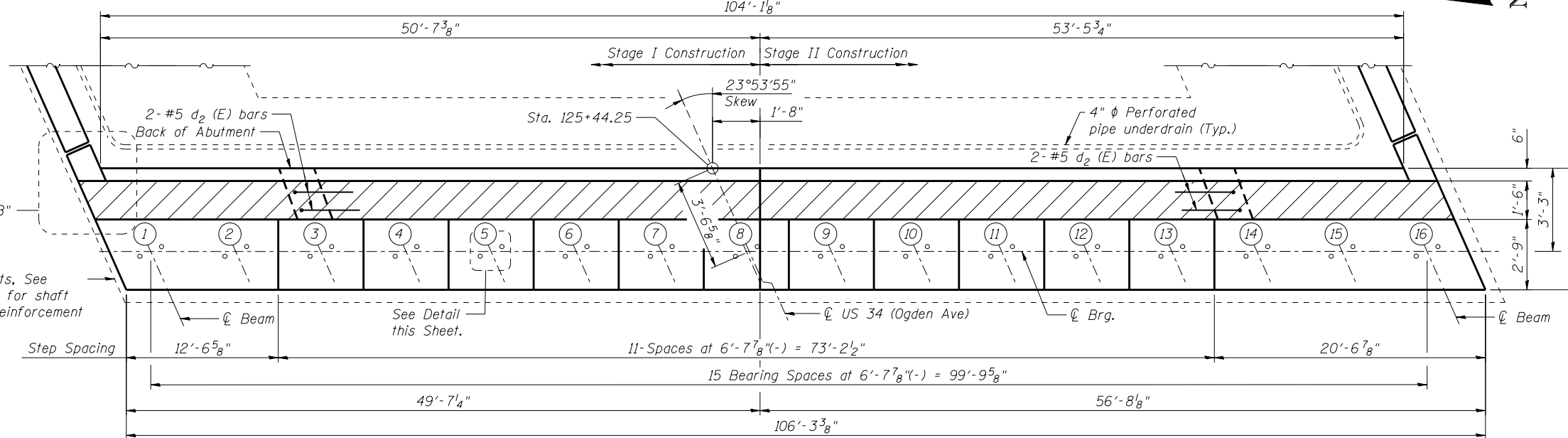
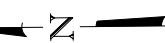
* Elevations along back of abutment



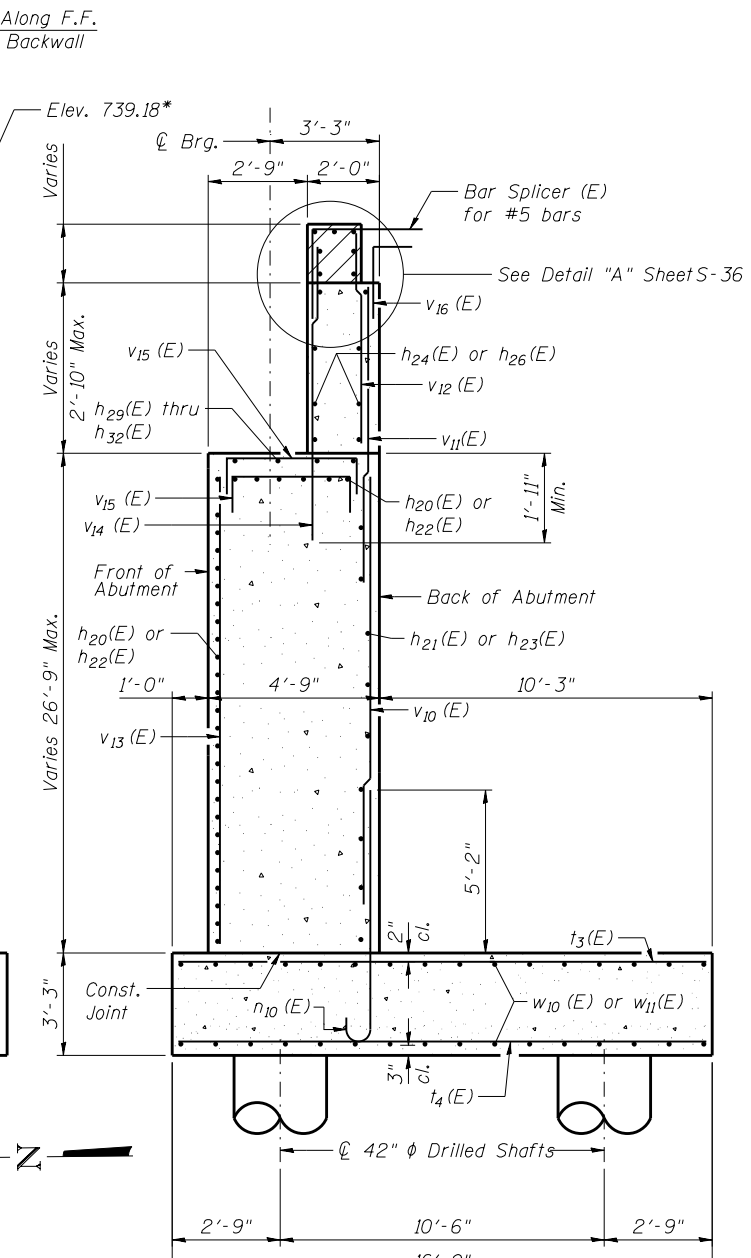
ANCHOR BOLT LAYOUT



ELEVATION



TOP PLAN



SECTION THRU ABUTMENT

Dimensions at Rt. L's

MINIMUM BAR LAP

- #4 Bar = 2'-4"
- #5 Bar = 2'-11"
- #6 Bar = 3'-6"
- #7 Bar = 4'-2"

NOTES

1. Hatched area to be poured after superstructure forms have been removed. Quantity of concrete to be included with Concrete Superstructure.
2. Space Reinforcement in cap to miss anchor bolts.
3. Bars indicated 10x2-#5 etc. indicates 2 lines of bars with 3 lengths per line.
4. Pour steps monolithically with stem.
5. F.F. denotes Front Face. B.F. denotes Back Face. E.F. denotes Each Face.
6. For Bar List and Bill of Materials, see Sheet S-36



USER NAME =
 CHECKED - STB
 PLOT SCALE =
 PLOT DATE = 02/28/2014

DESIGNED - KMP
 CHECKED - STB
 DRAWN - KMP
 CHECKED - AMK

REVISED
 REVISED
 REVISED
 REVISED

**STATE OF ILLINOIS
 DEPARTMENT OF TRANSPORTATION**

**EAST ABUTMENT 2
 STRUCTURE NO. 022-0512**

SHEET NO. S-35 OF S-53 SHEETS

F.A.P. RTE.	SECTION	COUNTY	TOTAL SHEETS	SHEET NO.
311	652-A	DuPAGE	383	198

CONTRACT NO. 60R06

ILLINOIS FED. AID PROJECT