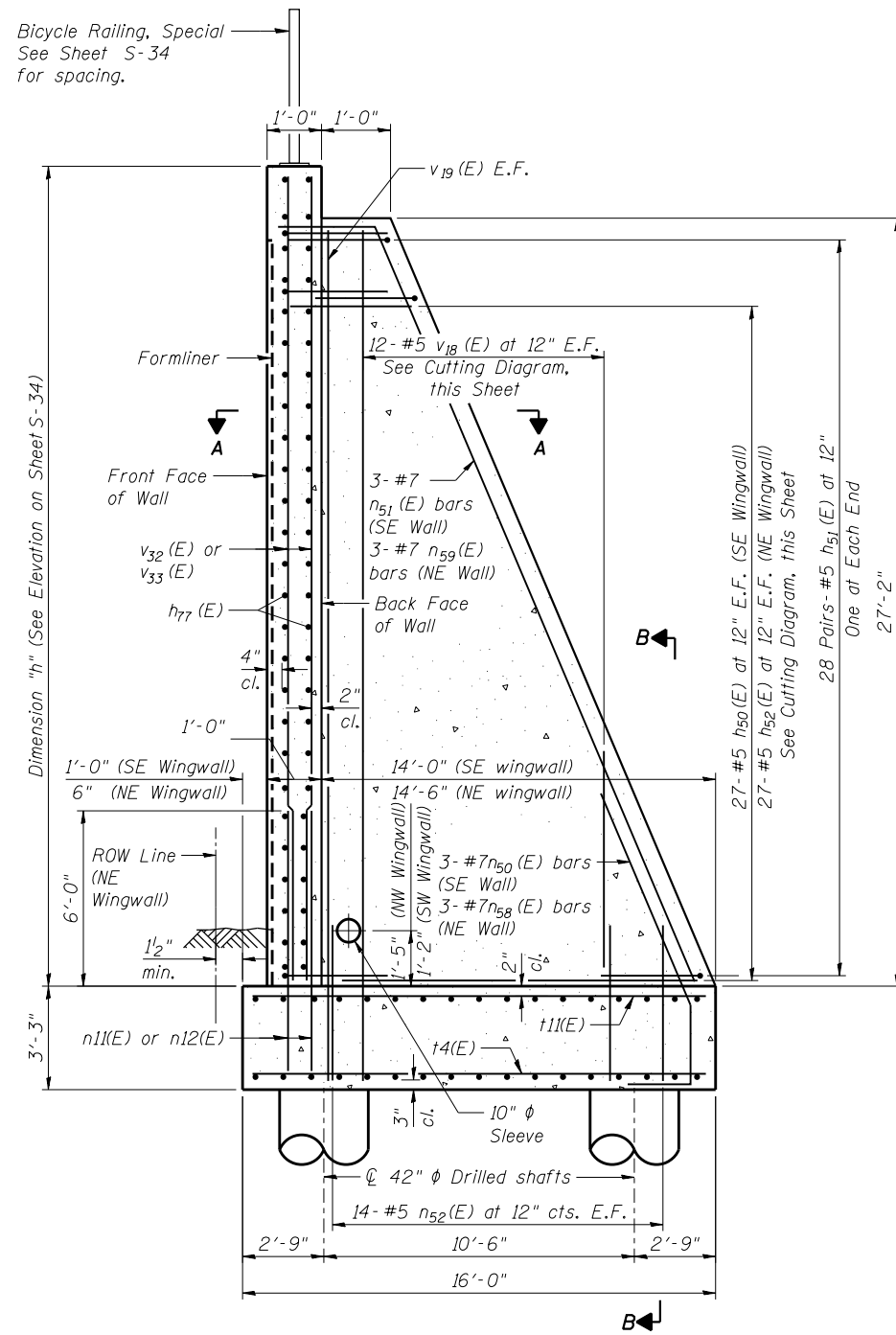
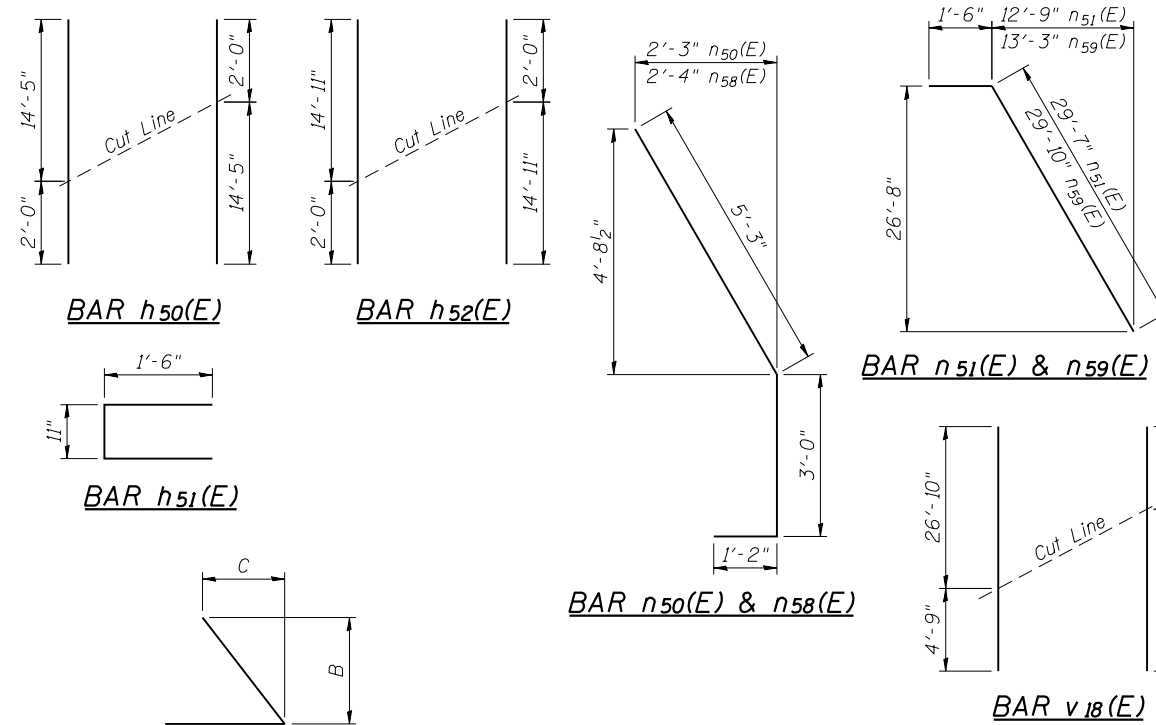
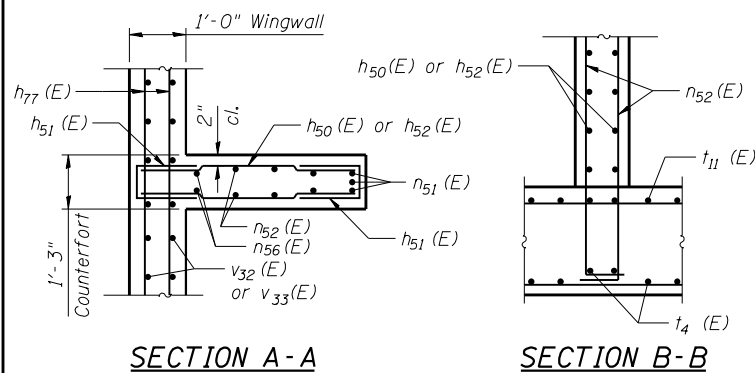


Bicycle Railing, Special
See Sheet S-34
for spacing.



WINGWALL SECTION

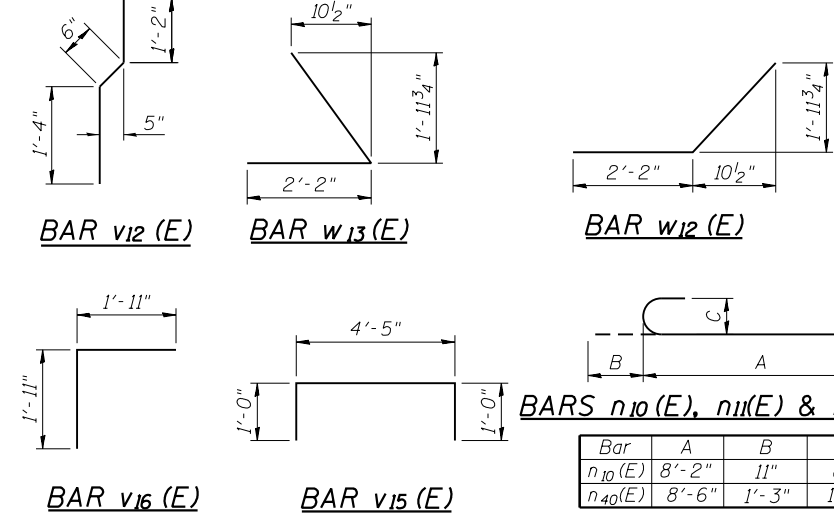


BAR h₇₁(E), h₇₄(E), h₇₆(E)

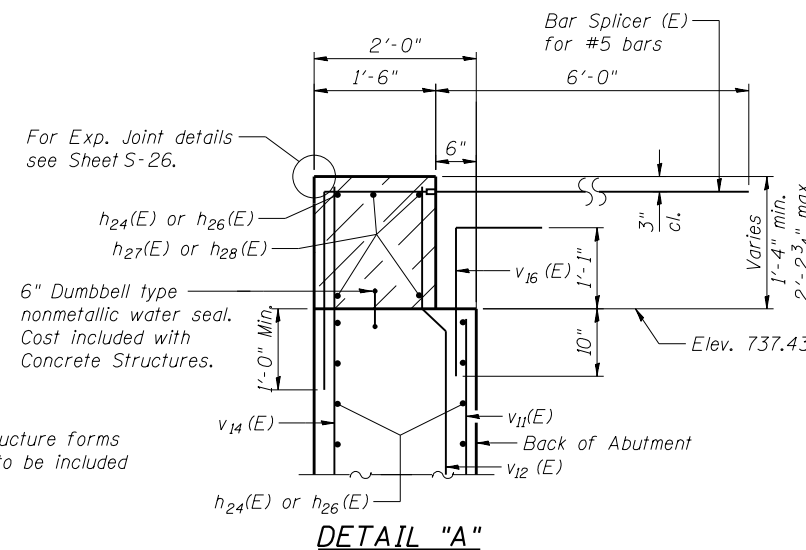
Bar	A	B	C
h ₇₁ (E)	3'-3"	1'-0"	5 1/2"
h ₇₄ (E)	2'-7"	1'-3 3/4"	2'-11 5/8"
h ₇₆ (E)	2'-7"	5'-8 1/4"	2'-6 1/4"

BAR h₇₀(E), h₇₃(E), h₇₅(E)

Bar	A	B	C
h ₇₀ (E)	2'-7"	7 1/4"	1'-4 1/2"
h ₇₃ (E)	2'-7"	2'-11 5/8"	1'-3 3/4"
h ₇₅ (E)	2'-7"	2'-6 3/4"	5'-9 1/2"



Bar	A	B	C
n ₁₀ (E)	8'-2"	11"	8"
n ₄₀ (E)	8'-6"	1'-3"	11 3/4"



NOTES

- Hatched area to be poured after superstructure forms have been removed. Quantity of concrete to be included with "Concrete Superstructure".
- E.F. denotes Each Face See Sheet S-20 for d₂(E) bar details.

BILL OF MATERIALS - EAST ABUTMENT

Bar	No.	Size	Length	Shape
d ₂ (E)	4	#5	7'-11"	—
h ₂₀ (E)	62	#5	27'-9"	—
h ₂₁ (E)	20	#4	28'-1"	—
h ₂₂ (E)	62	#5	29'-8"	—
h ₂₃ (E)	20	#4	28'-3"	—
h ₂₄ (E)	14	#5	28'-5"	—
h ₂₆ (E)	14	#5	27'-2"	—
h ₂₇ (E)	8	#6	27'-3"	—
h ₂₈ (E)	8	#6	29'-4"	—
h ₂₉ (E)	4	#5	35'-9"	—
h ₃₀ (E)	4	#5	15'-10"	—
h ₃₁ (E)	4	#5	3'-5"	—
h ₃₂ (E)	4	#5	23'-5"	—
h ₅₀ (E)	81	#5	16'-5"	—
h ₅₁ (E)	336	#5	3'-11"	—
h ₅₂ (E)	81	#5	16'-11"	—
h ₇₀ (E)	31	#5	3'-10"	—
h ₇₁ (E)	31	#5	4'-4"	—
h ₇₃ (E)	4	#5	5'-1"	—
h ₇₄ (E)	4	#5	5'-10"	—
h ₇₅ (E)	27	#5	8'-1"	—
h ₇₆ (E)	27	#5	8'-11"	—
h ₇₇ (E)	124	#5	28'-1"	—
h ₇₈ (E)	6	#5	0'-9"	—
h ₇₉ (E)	6	#5	1'-3"	—
n ₁₀ (E)	209	#8	9'-1"	—
n ₁₁ (E)	118	#5	9'-0"	—
n ₁₂ (E)	46	#5	9'-0"	—
n ₄₀ (E)	312	#9	9'-9"	—
n ₅₀ (E)	9	#7	9'-5"	—
n ₅₁ (E)	9	#7	31'-1"	—
n ₅₂ (E)	84	#5	5'-6"	—
n ₅₆ (E)	12	#5	29'-8"	—
n ₅₈ (E)	9	#5	9'-5"	—
n ₅₉ (E)	9	#5	31'-4"	—
SP40	39	#4	27'-1"	—
SP41	22	#4	25'-2"	—
t ₃ (E)	231	#7	15'-8"	—
t ₄ (E)	163	#5	15'-8"	—
t ₁₁ (E)	87	#9	15'-8"	—
v ₁₀ (E)	209	#7	25'-0"	—
v ₁₁ (E)	108	#5	5'-9"	—
v ₁₂ (E)	109	#4	3'-0"	—
v ₁₃ (E)	46	#4	25'-6"	—
v ₁₄ (E)	113	#5	5'-10"	—
v ₁₅ (E)	196	#5	6'-5"	—
v ₁₆ (E)	105	#5	3'-10"	—
v ₁₈ (E)	72	#5	31'-7"	—
v ₁₉ (E)	12	#5	26'-10"	—
v ₃₂ (E)	58	#5	29'-4"	—
v ₃₃ (E)	58	#5	29'-8"	—
v ₄₀	507	#9	30'-0"	—
v ₄₁	286	#9	27'-3"	—
v ₈₀ (E)	8	#4	6'-11"	—
w ₁₀ (E)	68	#5	29'-8"	—
w ₁₁ (E)	68	#5	30'-5"	—
w ₁₂ (E)	2	#5	4'-4"	—
w ₁₃ (E)	2	#5	4'-4"	—
w ₁₆ (E)	124	#5	25'-0"	—
Structure Excavation	Cu. Yd.		573	
Concrete Structures	Cu. Yd.		821.4	
Reinforcement Bars	Pounds		96,610	
Reinforcement Bars, Epoxy Coated	Pounds		77,150	

** Length is height of spiral.
Minimum lap for spirals is 2'-0"



USER NAME =	DESIGNED - KMP	REVISED
	CHECKED - STB	REVISED
PLOT SCALE =	DRAWN - KMP	REVISED
PLOT DATE = 03/19/2014	CHECKED - STB	REVISED

STATE OF ILLINOIS
DEPARTMENT OF TRANSPORTATION

EAST ABUTMENT DETAILS
STRUCTURE NO. 022-0512

SHEET NO. S-36 OF S-53 SHEETS

F.A.P. RTE.	SECTION	COUNTY	TOTAL SHEETS	SHEET NO.
311	652-A	DuPAGE	383	199
			CONTRACT NO. 60R06	
ILLINOIS FED. AID PROJECT				