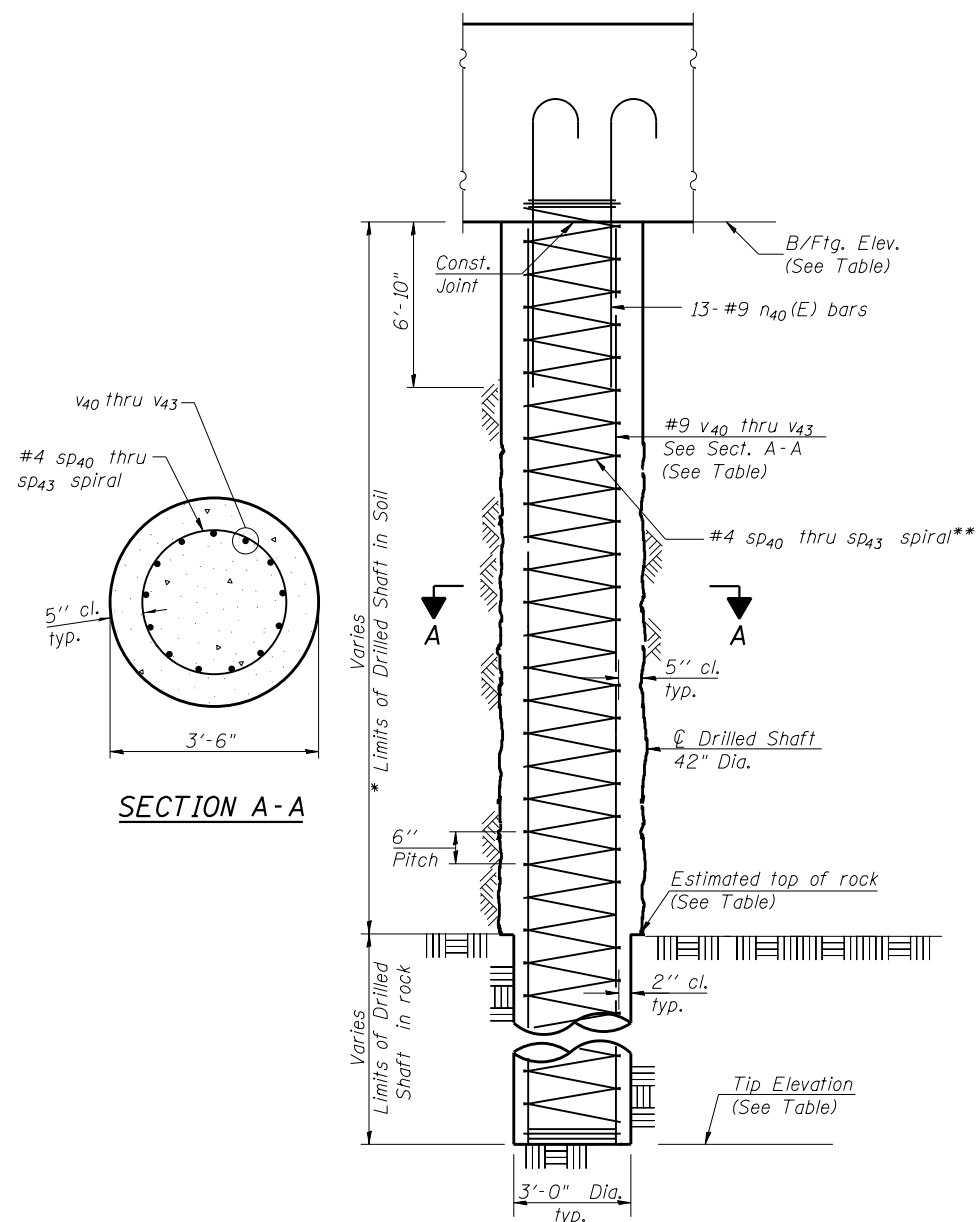


**DRILLED SHAFT SCHEDULE**

Shaft Designation	Location	No. Shafts	Bottom of Footing	Tip Elevation	Est. Top of Rock	Vertical Reinforcement	Spiral Reinforcement	Total Length	Rock Socket Length
S21	E. Abut.	13	705.50	624.50	633.80	13x3- #9 v <sub>40</sub>	1x3 #4 sp <sub>40</sub>	81.0'	9.30'
S22	E. Abut.	11	705.50	655.50	633.80	13x2- #9 v <sub>41</sub>	1x2 #4 sp <sub>41</sub>	50.0'	-
S23	W. Abut.	6	704.85	608.50	616.30	13x3- #9 v <sub>42</sub>	1x3 #4 sp <sub>42</sub>	96.4'	7.80'
S24	W. Abut.	7	704.85	626.00	633.80	13x3- #9 v <sub>43</sub>	1x3 #4 sp <sub>43</sub>	78.9'	7.80'
S25	W. Abut.	6	704.85	654.85	616.30	13x2- #9 v <sub>41</sub>	1x2 #4 sp <sub>41</sub>	50.0'	-
S26	W. Abut.	5	704.85	654.85	633.80	13x2- #9 v <sub>41</sub>	1x2 #4 sp <sub>41</sub>	50.0'	-

Notes:  
See sheets S-31 and S-34 for Drilled Shaft Locations  
See sheet S-36 for bar bend details and bill of bars.

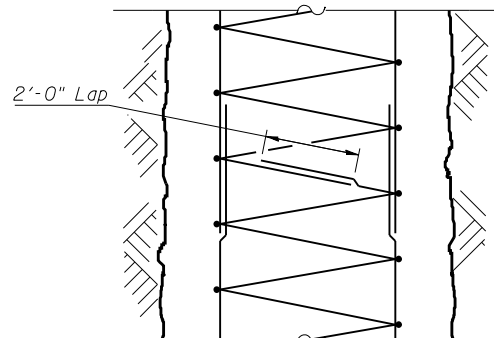


**DRILLED SHAFT DETAILS**

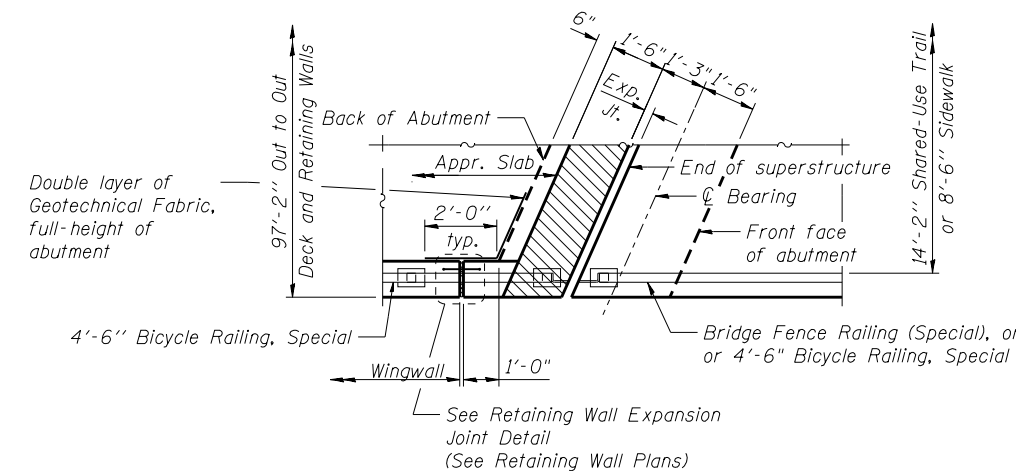
- \* The quantities and detailing are based on the estimated elevations shown on the plans. The actual elevations may differ at each shaft and corresponding adjustments shall be made to the drilled shaft and reinforcement quantities and payment limits.
- \*\* Provide 1/2 extra turns top and bottom of each drilled shaft. Extend spiral 2" into abutment or wingwall footing. Provide min. 4- #4 spacers or equivalent.

**MINIMUM BAR LAP**

#9 v<sub>40</sub> thru v<sub>43</sub> bar = 4'-7"

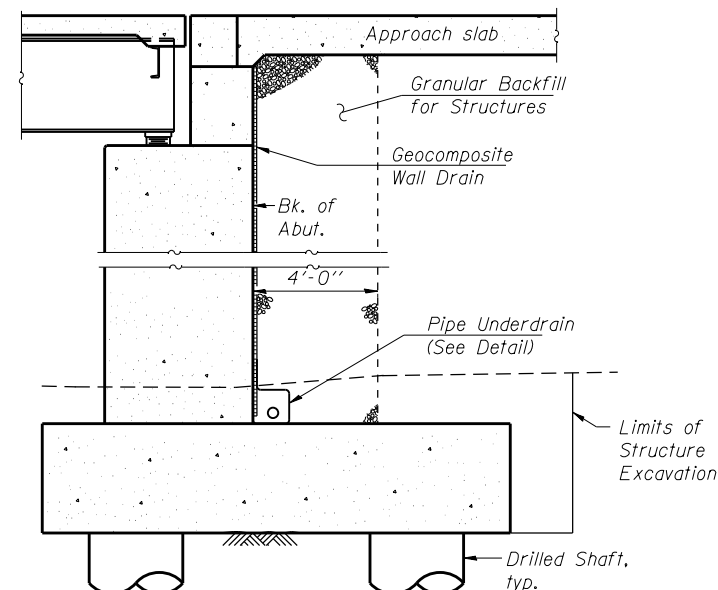


**SPIRAL SPLICE DETAIL**



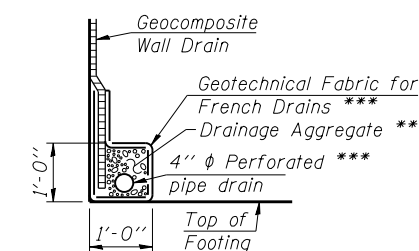
**DETAIL B**

NE Corner Shown, Other 3 Quadrants Similar.



**SECTION THRU ABUTMENT**

(Horiz. dim. at Rt. L's)



**PIPE UNDERDRAIN DETAIL**

\*\*\* Included in the cost of Pipe Underdrains for Structures. Connect abutment underdrains to Retaining Wall underdrains, and outlet to drainage structures. See Retaining Wall plans for outlet locations.



USER NAME =	DESIGNED - KMP	REVISED
	CHECKED - STB	REVISED
PLOT SCALE =	DRAWN - KMP	REVISED
PLOT DATE = 02/28/2014	CHECKED - STB	REVISED

STATE OF ILLINOIS  
DEPARTMENT OF TRANSPORTATION

DRILLED SHAFT AND MISCELLANEOUS DETAILS  
STRUCTURE NO. 022-0512

SHEET NO. S-37 OF S-53 SHEETS

F.A.P. RTE.	SECTION	COUNTY	TOTAL SHEETS	SHEET NO.
311	652-A	DuPAGE	383	200
CONTRACT NO. 60R06				

ILLINOIS FED. AID PROJECT