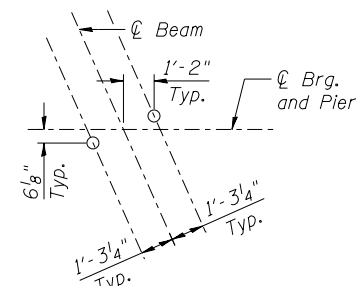
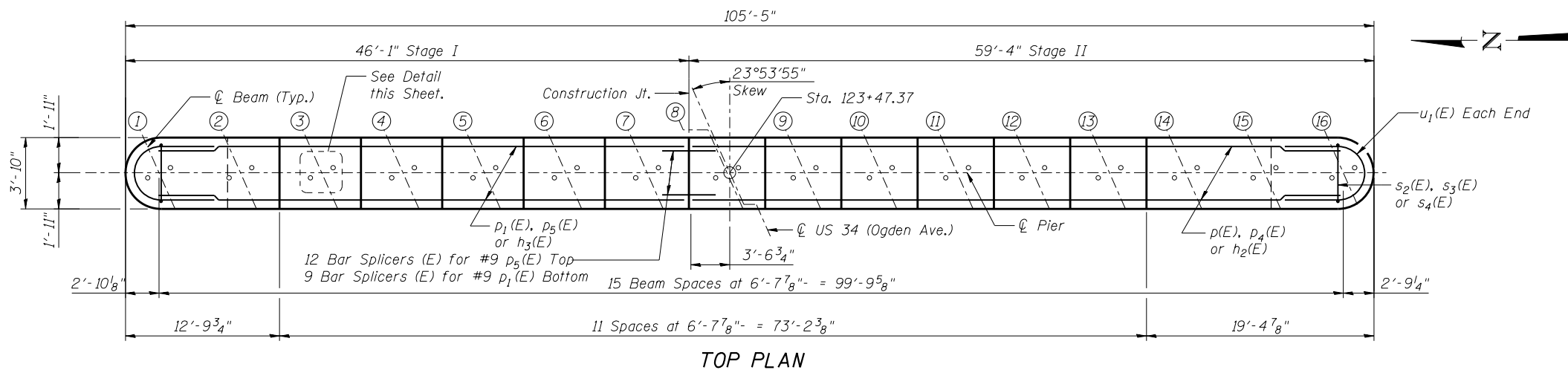


SEAT ELEVATIONS

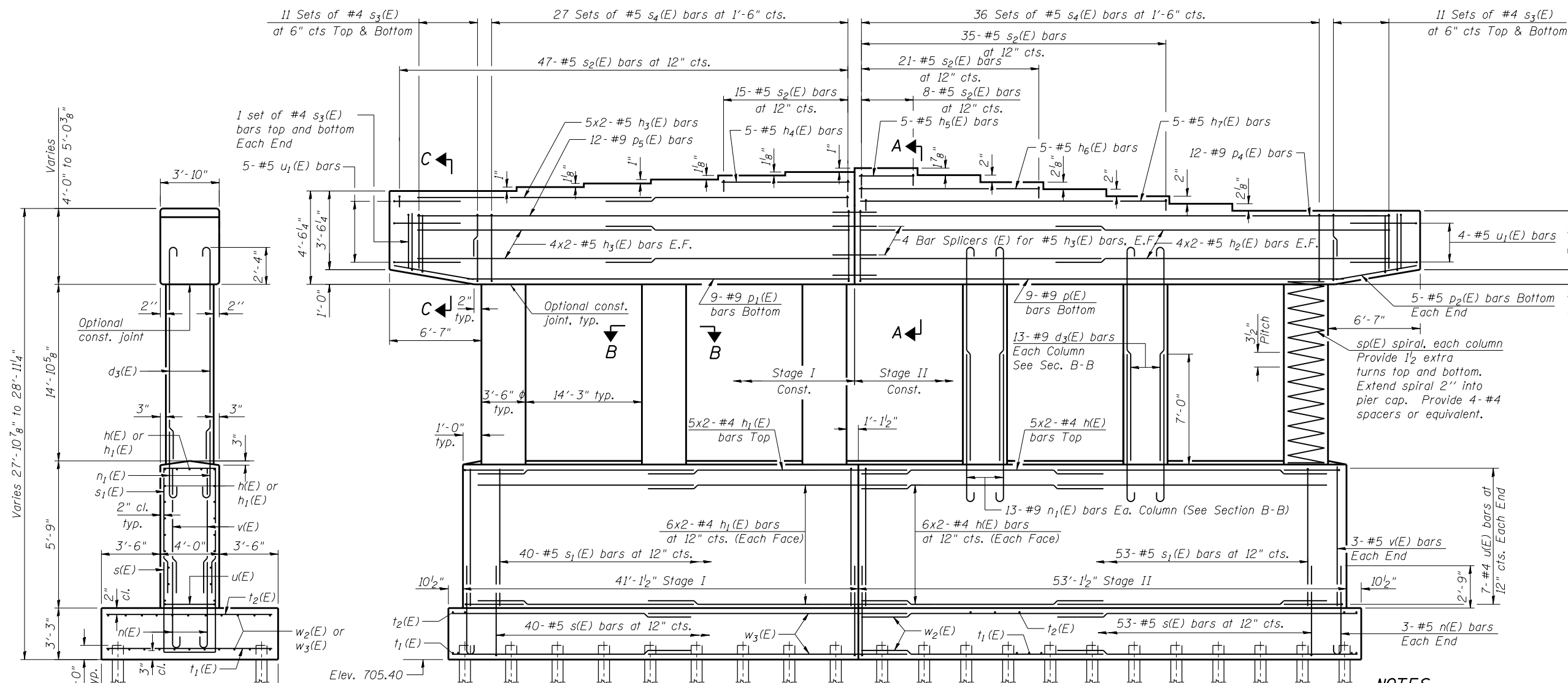
Beam Line	Seat Elevation
1	733.81
2	733.81
3	733.89
4	733.98
5	734.06
6	734.15
7	734.24
8	734.32
9	734.16
10	733.99
11	733.81
12	733.64
13	733.47
14	733.29
15	733.29
16	733.29



ANCHOR BOLT LAYOUT



TOP PLAN



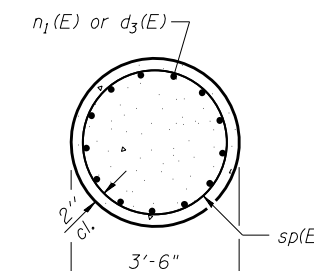
ELEVATION
(Looking East)

MINIMUM BAR LAP

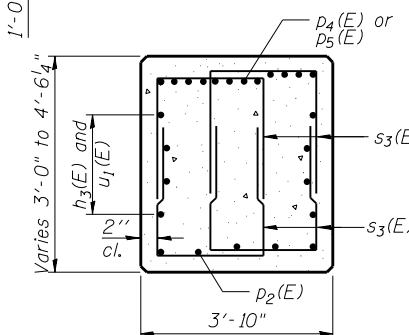
TOP BARS	OTHER BARS
#4 bar = 2'-4"	#4 bar = 2'-1"
#5 bar = 2'-11"	#5 bar = 2'-7"
#9 bar = 9'-8"	#9 bar = 6'-10"

NOTES

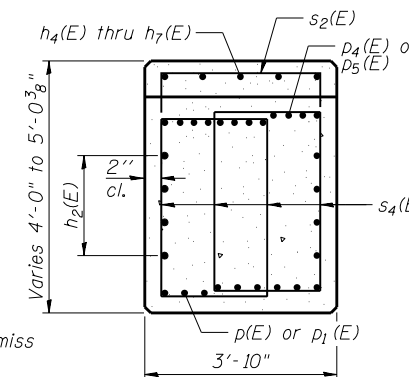
1. Bars indicated 6x2-#4 etc. indicates 6 lines of bars with 2 lengths per line.
2. Space reinforcement in cap to miss anchor bolts.
3. Pour steps monolithically with cap.
4. For details of piles, see Sheet S-41.



SEC. B-B



SEC. C-C



SEC. A-A



USER NAME =
DESIGNED - KMP
CHECKED - AMK
PLOT SCALE =
DRAWN - KMP
PLOT DATE = 02/28/2014

DESIGNED - KMP
CHECKED - AMK
DRAWN - KMP
CHECKED - AMK

REVISED
REVISED
REVISED
REVISED

STATE OF ILLINOIS
DEPARTMENT OF TRANSPORTATION

PIER 1
STRUCTURE NO. 022-0512

SHEET NO. S-38 OF S-53 SHEETS

F.A.P. RTE.	SECTION	COUNTY	TOTAL SHEETS	SHEET NO.
311	652-A	DuPAGE	383	201

CONTRACT NO. 60R06
ILLINOIS FED. AID PROJECT