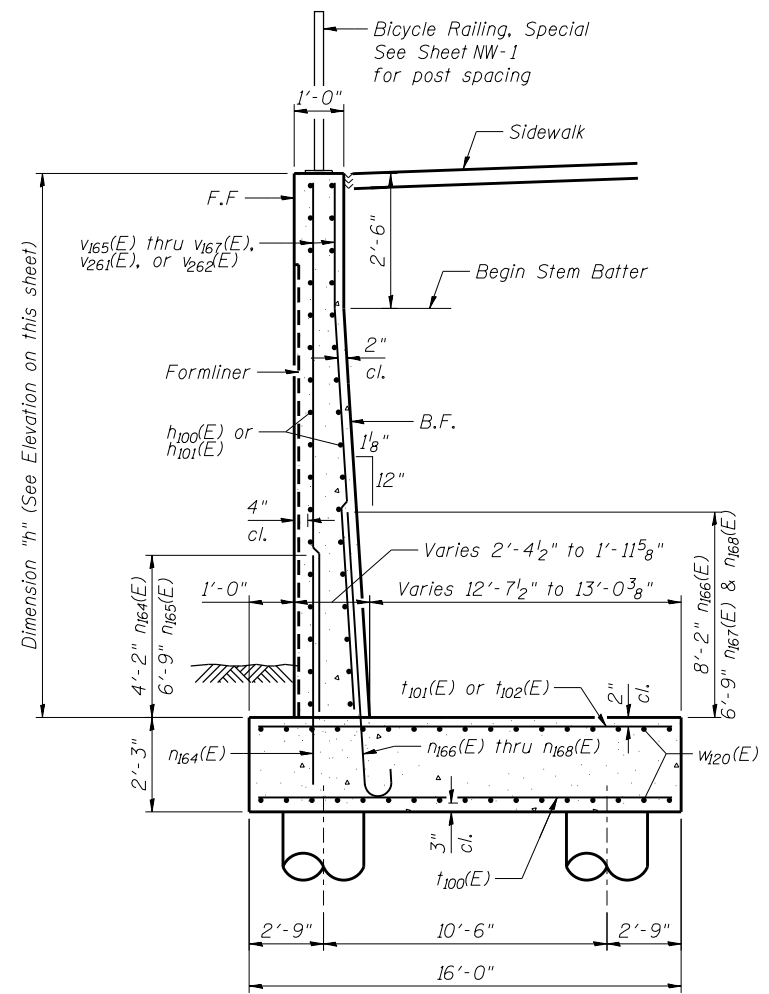


**ELEVATION**

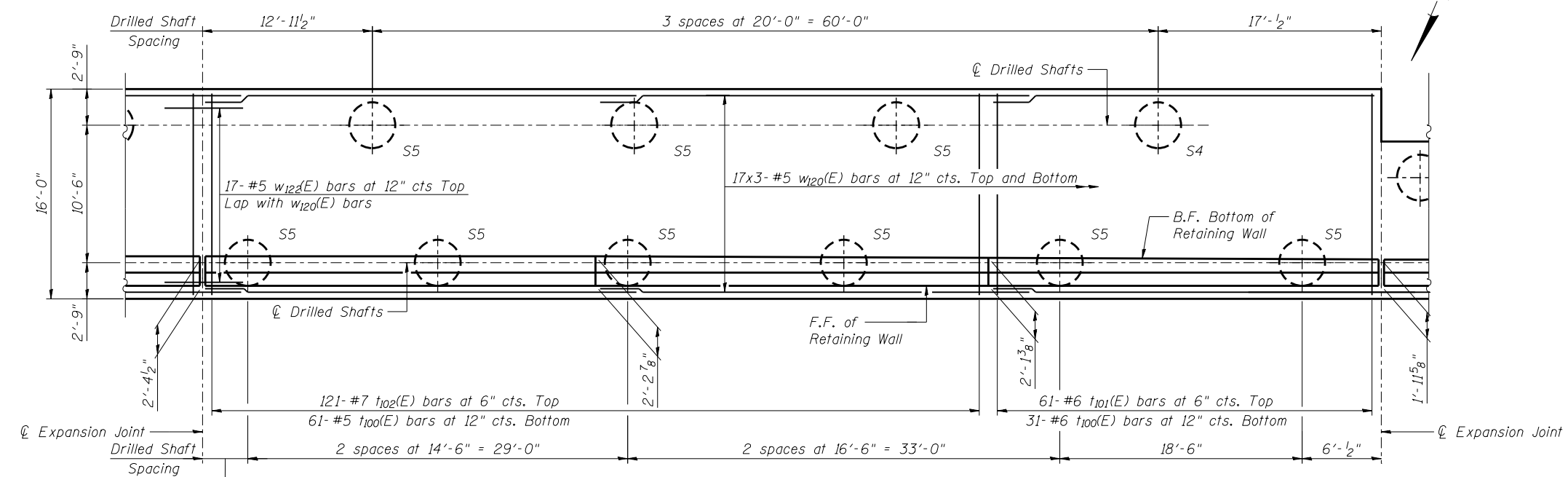


**SECTION A-A**

**MINIMUM BAR LAP**

- #5 Bar = 2'-7" (Vertical)
- #5 Bar = 2'-11" (Horizontal)
- #6 Bar = 3'-1"

- NOTES**
1. F.F. - Denotes Front Face  
B.F. - Denotes Back Face  
E.F. - Denotes Each Face
  2. See Sheet NW-10 for Bill of Material, Bar Bending Diagrams, Cutting Diagrams, Expansion Joint Details and Construction Joint Details.
  3. See General Plan and Elevation Sheet for Location and Spacing of Rail Posts.
  4. See General Notes Sheet for Wall Drainage Details.



**PLAN**



USER NAME =  
DESIGNED - KMP  
CHECKED - NPP  
PLOT SCALE =  
DRAWN - BAR  
PLOT DATE = 02/28/2014

DESIGNED - KMP  
CHECKED - NPP  
DRAWN - BAR  
CHECKED - NPP

REVISED  
REVISED  
REVISED  
REVISED

STATE OF ILLINOIS  
DEPARTMENT OF TRANSPORTATION

DETAIL PLAN AND ELEVATION 4  
STRUCTURE NO. 022-W068

SHEET NO. NW-7 OF NW-16 SHEETS

F.A.P. RTE.	SECTION	COUNTY	TOTAL SHEETS	SHEET NO.
311	652-A	DuPAGE	383	223
CONTRACT NO. 60R06				

ILLINOIS FED. AID PROJECT