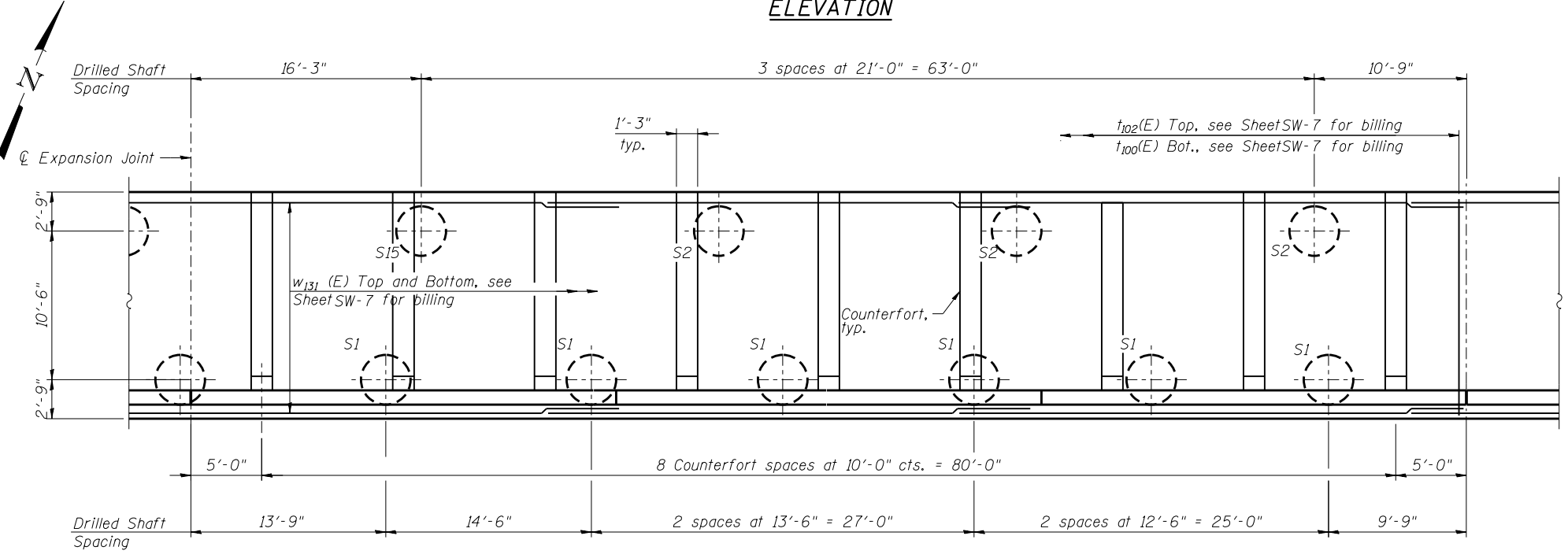
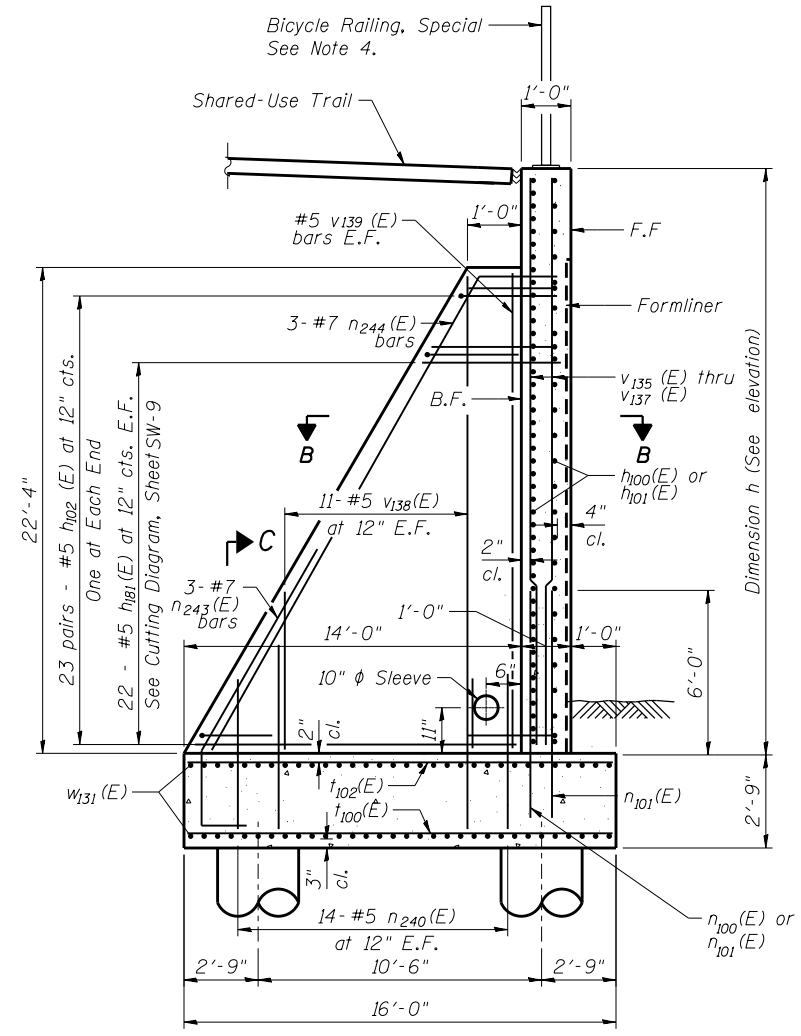


**ELEVATION**



**PLAN**



**SECTION A-A**

**MINIMUM BAR LAP**

#5 Bar = 2'-11" (horizontal bar)

#5 Bar = 2'-7" (vertical bar)

#6 Bar = 3'-1" (vertical bar)

#7 Bar = 5'-2"

**NOTES:**

- F.F. - Denotes Front Face
- B.F. - Denotes Back Face
- E.F. - Denotes Each Face
- See Sheet SW-2 for Wall Drainage Details and Bill of Material.
- See Sheet SW-9 for Bar Bending and Cutting Diagrams, Bill of Bars, Concrete Construction Joint, Sections B-B and C-C, and Expansion Joint details.
- For Bicycle Railing post location spacing see General Plan and Elevation Sheet.
- Reinforcement bars designated (E) shall be epoxy coated.
- Bars indicated thus 20 x 3- #5 etc. indicates 20 lines of bars with 3 lengths per line.



USER NAME =	DESIGNED - KMP	REVISED
	CHECKED - AMK	REVISED
PLOT SCALE =	DRAWN - STB	REVISED
PLOT DATE = 03/19/2014	CHECKED - MAD	REVISED

STATE OF ILLINOIS  
DEPARTMENT OF TRANSPORTATION

DETAIL PLAN AND ELEVATION 6  
STRUCTURE NO. 022-W069

SHEET NO. SW-8 OF SW-15 SHEETS

F.A.P. RTE.	SECTION	COUNTY	TOTAL SHEETS	SHEET NO.
311	652-A	DuPAGE	383	240
CONTRACT NO. 60R06				
ILLINOIS FED. AID PROJECT				