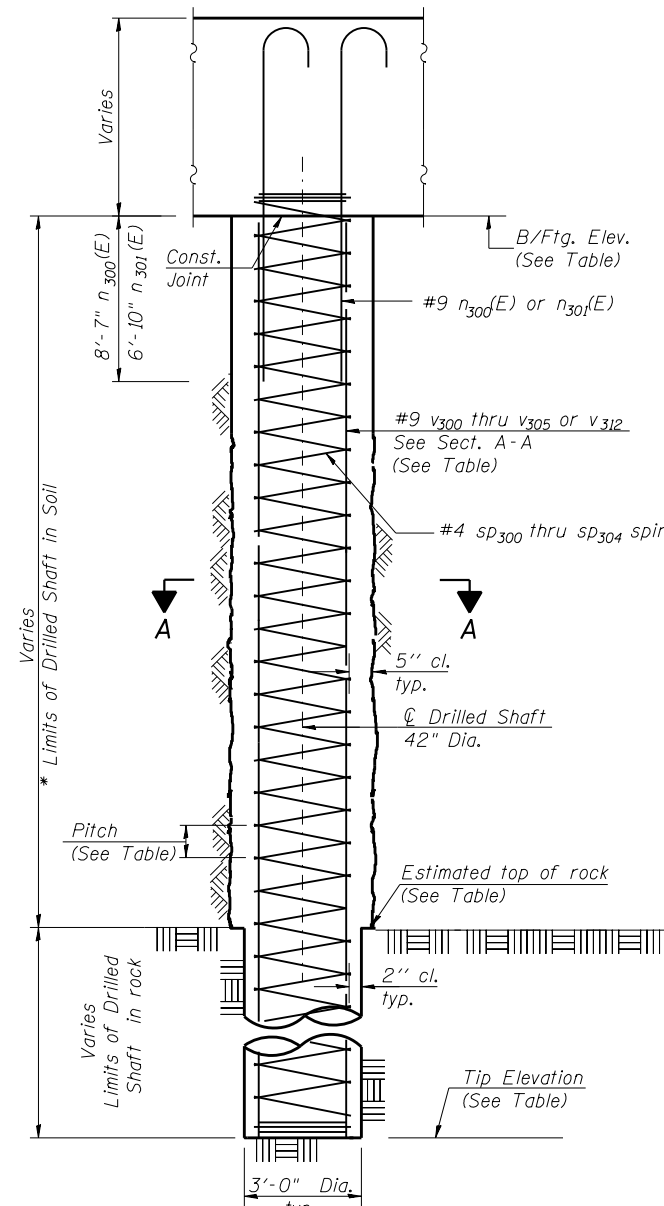


DRILLED SHAFT SCHEDULE

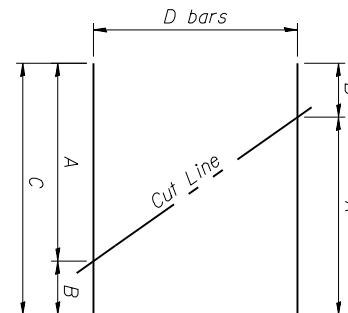
BILL OF MATERIALS - SW RETAINING WALL



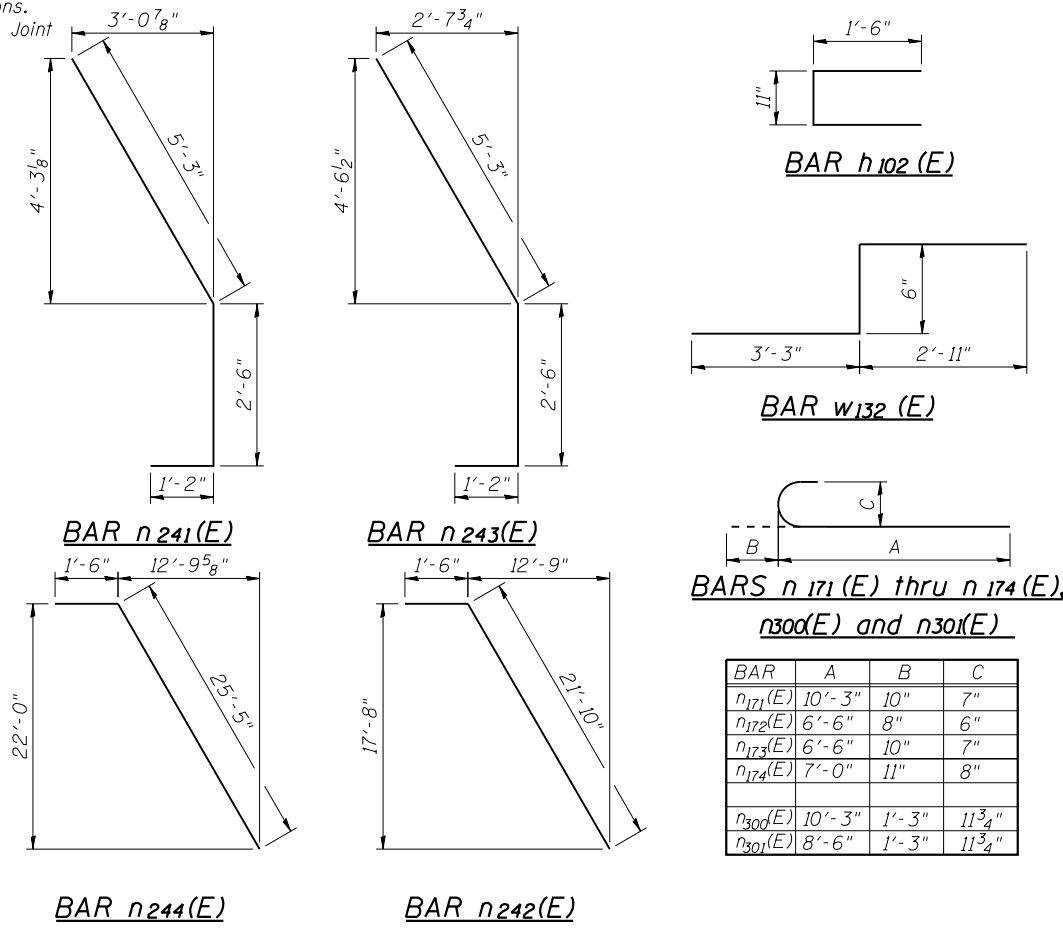
Shaft Designation	No. Shafts	Bottom of Footing	Tip Elevation	Est. Top of Rock	Vertical Reinforcement	Spiral Reinforcement	Pitch	Dowel Bar Reinforcement	Total Length	Rock Socket Length
S1	6	704.85	626.5	633.8	21x3- #9 v ₃₀₀	1x3- #5 s _{p300}	4"	21- #9 n _{300(E)}	78.4	7.30'
S2	3	704.85	660	633.8	21x2- #9 v ₃₀₁	1x2- #5 s _{p301}	4"	21- #9 n _{300(E)}	44.9	-
S3	6	704.85	626.5	633.8	13x3- #9 v ₃₀₅	1x3- #5 s _{p302}	5 1/2"	13- #9 n _{301(E)}	78.4	7.30'
S4	12	704.85	660	633.8	13x2- #9 v ₃₀₄	1x2- #5 s _{p303}	5 1/2"	13- #9 n _{301(E)}	44.9	-
S5	20	704.85	648	633.8	13x2- #9 v ₃₀₂	1x2- #5 s _{p304}	5 1/2"	13- #9 n _{301(E)}	56.9	-
S15	1	704.85	648	633.8	21x2- #9 v ₃₁₂	1x2- #5 s _{p319}	4"	21- #9 n _{300(E)}	56.9	-

Notes:
See sheets SW-4 thru SW-8 for Drilled Shaft Locations.
See sheet NW-10 for Expansion Joint and Construction Joint Details.

MINIMUM BAR LAP
#9 v₃₀₀, v₃₀₁ and v₃₁₂ Bars = 5'-9"
#9 v₃₀₂, v₃₀₄ and v₃₀₅ Bars = 4'-7"



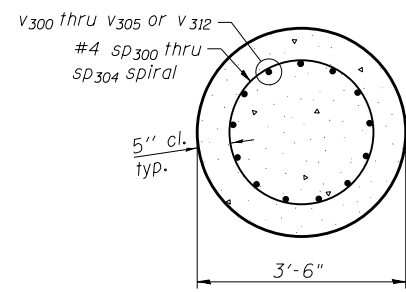
BAR	A	B	C	D
h _{180(E)}	14'-2"	2'-1"	16'-3"	18
h _{181(E)}	14'-2"	2'-1"	16'-3"	22
v _{133(E)}	17'-6"	3'-9"	21'-3"	11
v _{138(E)}	21'-6"	4'-3"	25'-9"	11
v _{210(E)}	7'-8"	7'-1"	14'-9"	20
v _{211(E)}	8'-3"	7'-8"	15'-11"	21
v _{212(E)}	9'-4"	8'-4"	17'-8"	31
v _{213(E)}	9'-7"	8'-5"	18'-0"	31
v _{214(E)}	9'-9"	8'-7"	18'-4"	31



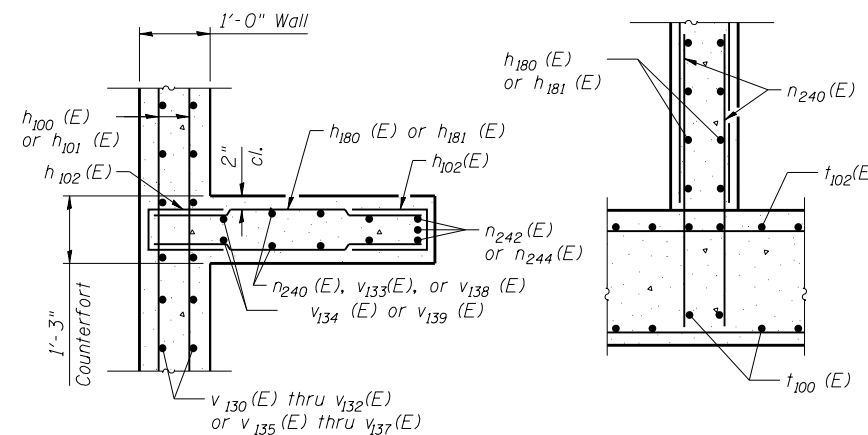
DRILLED SHAFT DETAILS

* The quantities and detailing are based on the estimated elevations shown on the plans. The actual elevations may differ at each shaft and corresponding adjustments shall be made to the drilled shaft and reinforcement quantities and payment limits.

** Provide 1/2 extra turns top and bottom of each drilled shaft. Extend spiral 2" into retaining wall footing. Provide min. 4-#4 spacers or equivalent.



SECTION A-A



SECTION B-B

SECTION C-C

BILL OF MATERIAL DRILLED SHAFT

Bar	No.	Size	Length	Shape
n _{300(E)}	210	#9	11'-6"	U
n _{301(E)}	494	#9	9'-9"	U
s _{p300}	18	#5	26'-4"	W
s _{p301}	6	#5	22'-8"	W
s _{p302}	18	#5	26'-4"	W
s _{p303}	24	#5	22'-8"	W
s _{p304}	40	#5	28'-8"	W
s _{p319}	2	#5	28'-8"	W
v ₃₀₀	378	#9	29'-11"	—
v ₃₀₁	126	#9	25'-4"	—
v ₃₀₅	234	#9	29'-2"	—
v ₃₀₄	312	#9	24'-9"	—
v ₃₀₂	520	#9	30'-9"	—
v ₃₁₂	42	#9	31'-4"	—

** Length is height of spiral.
Minimum Spiral Lap = 2'-6"

Bar	No.	Size	Length	Shape
h _{100(E)}	244	#5	29'-8"	—
h _{101(E)}	510	#5	32'-11"	—
h _{102(E)}	756	#5	3'-11"	U
h _{140(E)}	18	#5	19'-1"	—
h _{141(E)}	20	#5	22'-11"	—
h _{180(E)}	162	#5	16'-3"	—
h _{181(E)}	198	#5	16'-3"	—
n _{100(E)}	44	#6	8'-6"	—
n _{101(E)}	348	#5	8'-6"	—
n _{170(E)}	279	#5	6'-6"	—
n _{171(E)}	122	#7	11'-1"	U
n _{172(E)}	31	#6	7'-2"	U
n _{173(E)}	93	#7	7'-4"	U
n _{174(E)}	61	#8	7'-11"	U
n _{240(E)}	504	#5	5'-3"	—
n _{241(E)}	27	#7	8'-11"	—
n _{242(E)}	27	#7	23'-4"	—
n _{243(E)}	27	#7	8'-11"	—
n _{244(E)}	27	#7	26'-11"	—
t _{100(E)}	331	#5	15'-8"	—
t _{102(E)}	360	#7	15'-8"	—
t _{103(E)}	300	#8	15'-8"	—
t _{110(E)}	150	#5	11'-8"	—
t _{112(E)}	200	#7	11'-8"	—
v _{130(E)}	67	#5	16'-11"	—
v _{131(E)}	62	#5	18'-4"	—
v _{132(E)}	67	#5	19'-9"	—
v _{133(E)}	99	#5	21'-3"	—
v _{134(E)}	18	#5	17'-8"	—
v _{135(E)}	67	#5	21'-0"	—
v _{136(E)}	62	#5	22'-3"	—
v _{137(E)}	67	#5	23'-3"	—
v _{138(E)}	99	#5	25'-9"	—
v _{139(E)}	18	#5	22'-0"	—
v _{170(E)}	62	#5	7'-4"	—
v _{171(E)}	62	#5	8'-9"	—
v _{172(E)}	62	#5	10'-3"	—
v _{173(E)}	62	#5	11'-8"	—
v _{174(E)}	31	#5	13'-2"	—
v _{175(E)}	31	#6	13'-8"	—
v _{176(E)}	31	#5	14'-7"	—
v _{177(E)}	31	#5	16'-0"	—
v _{178(E)}	31	#5	17'-6"	—
v _{179(E)}	31	#6	11'-3"	—
v _{180(E)}	31	#6	12'-9"	—
v _{181(E)}	61	#6	17'-6"	—
v _{210(E)}	20	#5	14'-9"	—
v _{211(E)}	21	#5	15'-11"	—
v _{212(E)}	31	#5	17'-8"	—
v _{213(E)}	31	#5	18'-0"	—
v _{214(E)}	31	#5	18'-4"	—
w _{130(E)}	78	#5	31'-10"	—
w _{131(E)}	566	#5	32'-11"	—
w _{132(E)}	17	#5	6'-8"	U
Structure Excavation		Cu. Yd.	1,324	
Concrete Structures		Cu. Yd.	1,114.1	
Reinforcement Bars		Pounds	217,310	
Reinforcement Bars, Epoxy Coated		Pounds	159,810	



USER NAME =	DESIGNED - KMP	REVISED
	CHECKED - AMK	REVISED
PLOT SCALE =	DRAWN - STB	REVISED
PLOT DATE = 02/28/2014	CHECKED - MAD	REVISED

STATE OF ILLINOIS
DEPARTMENT OF TRANSPORTATION

MISCELLANEOUS DETAILS
STRUCTURE NO. 022-W069

SHEET NO. SW-9 OF SW-15 SHEETS

F.A.P. RTE.	SECTION	COUNTY	TOTAL SHEETS	SHEET NO.
311	652-A	DUPAGE	383	241
CONTRACT NO. 60R06			ILLINOIS FED. AID PROJECT	