

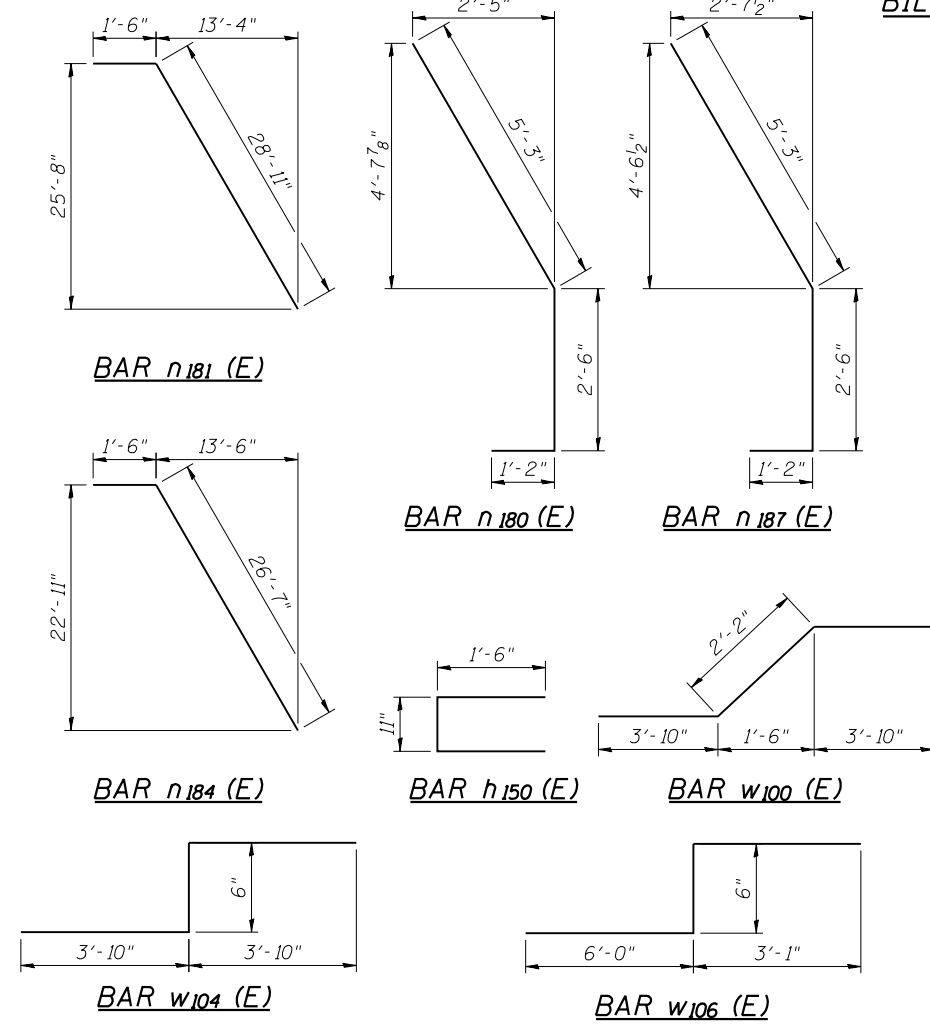
BILL OF MATERIALS - NE RETAINING WALL

Bar	No.	Size	Length	Shape
h100(E)	314	#5	29'-8"	—
h101(E)	671	#5	32'-11"	—
h102(E)	14	#5	26'-1"	—
h150(E)	918	#5	3'-11"	—
h151(E)	234	#5	16'-9"	—
h152(E)	207	#5	16'-9"	—
n100(E)	44	#6	8'-6"	—
n101(E)	348	#5	8'-6"	—
n140(E)	248	#5	6'-6"	—
n141(E)	61	#8	15'-8"	—
n142(E)	122	#9	16'-0"	—
n143(E)	61	#7	12'-10"	—
n144(E)	122	#8	13'-11"	—
n145(E)	62	#7	8'-4"	—
n146(E)	61	#7	9'-10"	—
n147(E)	31	#5	6'-9"	—
n148(E)	31	#6	6'-10"	—
n180(E)	27	#7	8'-11"	—
n181(E)	27	#7	30'-5"	—
n183(E)	504	#5	5'-3"	—
n184(E)	27	#7	28'-1"	—
n187(E)	27	#7	8'-11"	—
n188(E)	93	#5	7'-6"	—
t100(E)	511	#5	15'-8"	—
t101(E)	180	#6	15'-8"	—
t102(E)	601	#7	15'-8"	—
t103(E)	240	#8	15'-8"	—
v100(E)	18	#5	25'-8"	—
v101(E)	186	#5	25'-1"	—
v102(E)	186	#5	23'-5"	—
v103(E)	18	#5	22'-11"	—
v104(E)	31	#5	19'-7"	—
v105(E)	31	#5	20'-10"	—
v106(E)	31	#5	22'-11"	—
v107(E)	31	#6	13'-9"	—
v108(E)	31	#7	14'-10"	—
v109(E)	31	#7	16'-1"	—
v140(E)	31	#5	15'-8"	—
v141(E)	31	#5	17'-2"	—
v142(E)	31	#5	19'-1"	—
v143(E)	31	#5	10'-2"	—
v144(E)	31	#6	11'-8"	—
v145(E)	31	#6	13'-1"	—
v146(E)	31	#5	12'-2"	—
v147(E)	31	#5	13'-8"	—
v148(E)	31	#5	15'-1"	—
v149(E)	31	#5	10'-10"	—
v250(E)	31	#5	12'-4"	—
v251(E)	31	#5	12'-3"	—
v252(E)	62	#5	9'-4"	—
v253(E)	62	#5	10'-9"	—
v254(E)	108	#5	28'-11"	—
v255(E)	108	#5	26'-2"	—
v185(E)	27	#5	11'-4"	—
v186(E)	31	#5	13'-3"	—
v187(E)	31	#5	13'-6"	—
v188(E)	31	#5	16'-0"	—
v189(E)	31	#5	18'-8"	—
w100(E)	33	#5	9'-10"	—
w102(E)	396	#5	33'-8"	—
w103(E)	102	#5	32'-4"	—
w104(E)	34	#5	8'-2"	—
w105(E)	272	#5	33'-2"	—
w106(E)	17	#5	9'-7"	—
Structure Excavation		Cu. Yd.	1,849	
Concrete Structures		Cu. Yd.	1,543.2	
Reinforcement Bars		Pounds	327,690	
Reinforcement Bars, Epoxy Coated		Pounds	212,070	

BILL OF MATERIAL DRILLED SHAFT

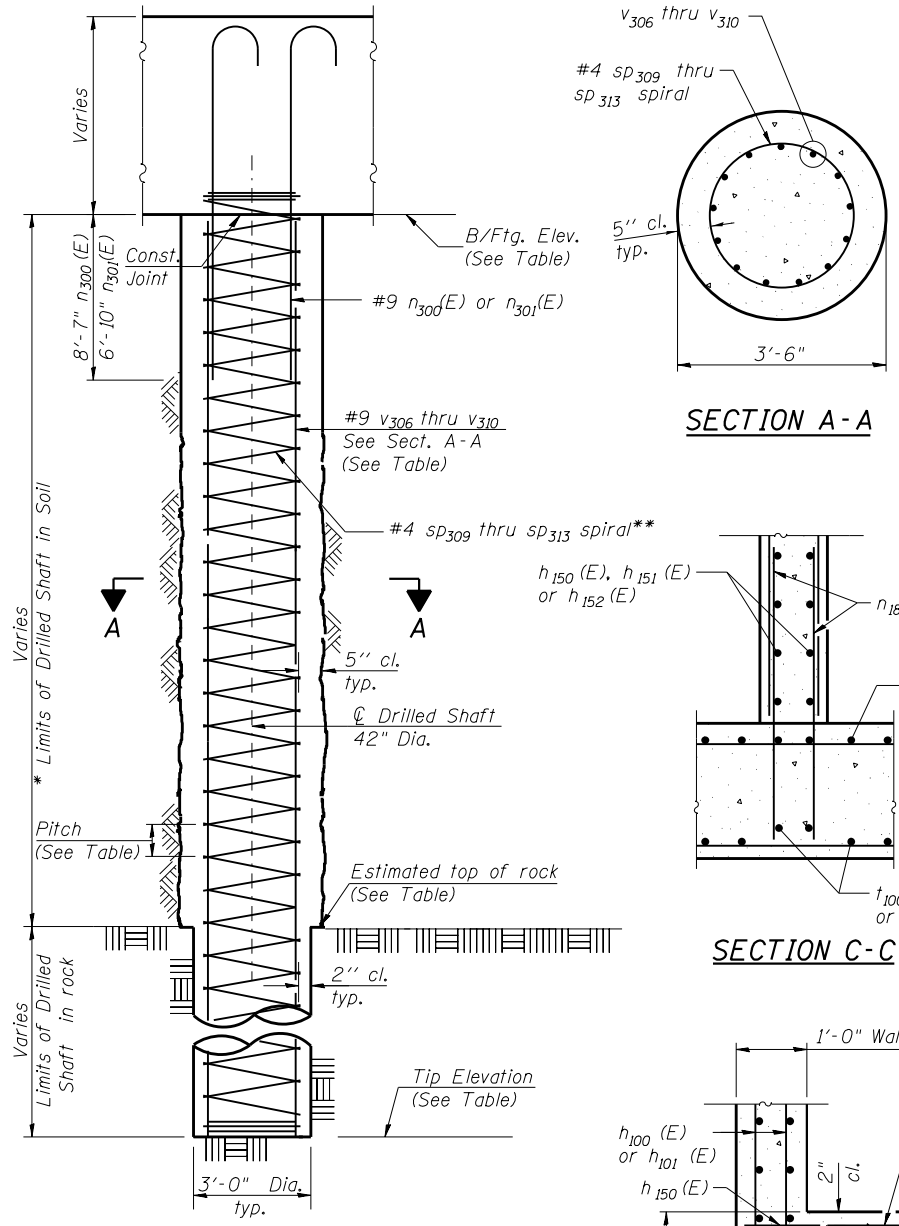
Bar	No.	Size	Length	Shape
n300(E)	504	#9	11'-6"	—
n301(E)	507	#9	9'-9"	—
SP309	45	#5	27'-1"	—
SP310	18	#5	23'-8"	—
SP311	18	#5	27'-1"	—
SP312	10	#5	23'-8"	—
SP313	56	#5	29'-8"	—
V307	945	#9	30'-9"	—
V310	378	#9	26'-5"	—
V308	234	#9	30'-0"	—
V309	130	#9	25'-10"	—
V306	728	#9	31'-10"	—

** Length is height of spiral.
Minimum lap for spirals = 2'-6"



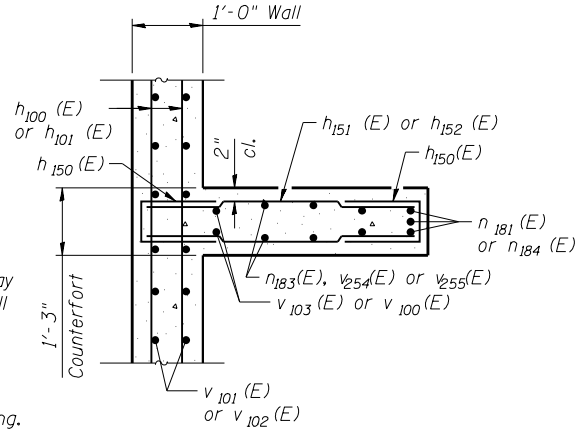
BARS n141(E) THRU n148(E), n300(E) & n301(E)

Bar	A	B	C
n141(E)	14'-9"	11"	8"
n142(E)	14'-9"	1'-3"	11 ³ / ₄ "
n143(E)	12'-0"	10"	7"
n144(E)	13'-0"	11"	8"
n145(E)	7'-6"	10"	7"
n146(E)	9'-0"	10"	7"
n147(E)	6'-2"	7"	5"
n148(E)	6'-2"	8"	6"
n300(E)	10'-3"	1'-3"	11 ³ / ₄ "
n301(E)	8'-6"	1'-3"	11 ³ / ₄ "

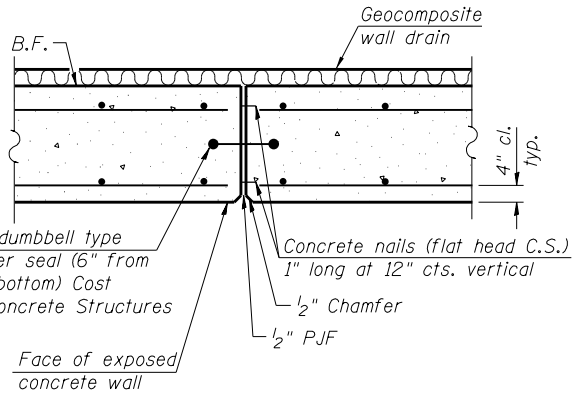


SECTION A-A

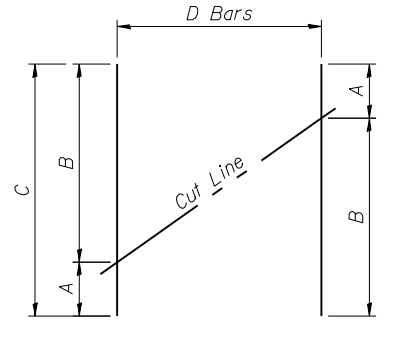
SECTION C-C



SECTION B-B



EXPANSION JOINT DETAIL



BAR CUTTING DIAGRAM

Order bars full length. Cut as shown and use remainder of bars in opposite face.

BAR	A	B	C	D
h151(E)	2'-0"	14'-9"	16'-9"	26
h152(E)	2'-0"	14'-9"	16'-9"	23
v254(E)	3'-3"	25'-8"	28'-11"	12
v255(E)	3'-3"	22'-11"	26'-2"	12
v185(E)	5'-3"	6'-1"	11'-4"	27
v186(E)	6'-1"	7'-2"	13'-3"	31
v187(E)	6'-2"	7'-4"	13'-6"	31
v188(E)	7'-4"	8'-8"	16'-0"	31
v189(E)	8'-8"	10'-0"	18'-8"	31

CONSTRUCTION JOINT DETAIL

DRILLED SHAFT DETAILS

* The quantities and detailing are based on the estimated elevations shown on the plans. The actual elevations may differ at each shaft and corresponding adjustments shall be made to the drilled shaft and reinforcement quantities and payment limits.

** Provide 1/2 extra turns top and bottom of each drilled shaft. Extend spiral 2' into retaining wall footing. Provide min. 4-#4 spacers or equivalent.

MINIMUM BAR LAP

#9 v307 and #9 v310 Bars = 5'-9"
#9 v306, #9 v308 and #9 v309 Bars = 4'-7"

DRILLED SHAFT SCHEDULE

Shaft Designation	No. Shafts	Bottom of Footing	Tip Elevation	Est. Top of Rock	Vertical Reinforcement	Spiral Reinforcement	Pitch	Dowel Bar Reinforcement	Total Length	Rock Socket Length
S7	15	707.00	626.3	633.6	21x3-#9 v307	1x3-#5 SP309	4"	21-#9 n300(E)	80.7	7.30'
S8	9	707.00	660	633.6	21x2-#9 v310	1x2-#5 SP310	4"	21-#9 n300(E)	47.0	-
S9	6	707.00	626.3	633.6	13x3-#9 v308	1x3-#5 SP311	5 ¹ / ₂ "	13-#9 n301(E)	80.7	7.30'
S10	5	707.00	660	633.6	13x2-#9 v309	1x2-#5 SP312	5 ¹ / ₂ "	13-#9 n301(E)	47.0	-
S11	28	707.00	648	633.6	13x2-#9 v306	1x2-#5 SP313	5 ¹ / ₂ "	13-#9 n301(E)	59.0	-

Notes:
See sheets NE-5 thru NE-10 for Drilled Shaft Locations.



USER NAME =	DESIGNED - KMP	REVISED
PLOT SCALE =	CHECKED - AMK	REVISED
PLOT DATE = 02/28/2014	DRAWN - KJZ	REVISED
	CHECKED - NNP	REVISED

STATE OF ILLINOIS
DEPARTMENT OF TRANSPORTATION

MISCELLANEOUS DETAILS
STRUCTURE NO. 022-W070

SHEET NO. NE-11 OF NE-18 SHEETS

F.A.P. RTE. 311	SECTION 652-A	COUNTY DuPAGE	TOTAL SHEETS 383	SHEET NO. 258
CONTRACT NO. 60R06			ILLINOIS FED. AID PROJECT	