

**BILL OF MATERIAL
DRILLED SHAFT**

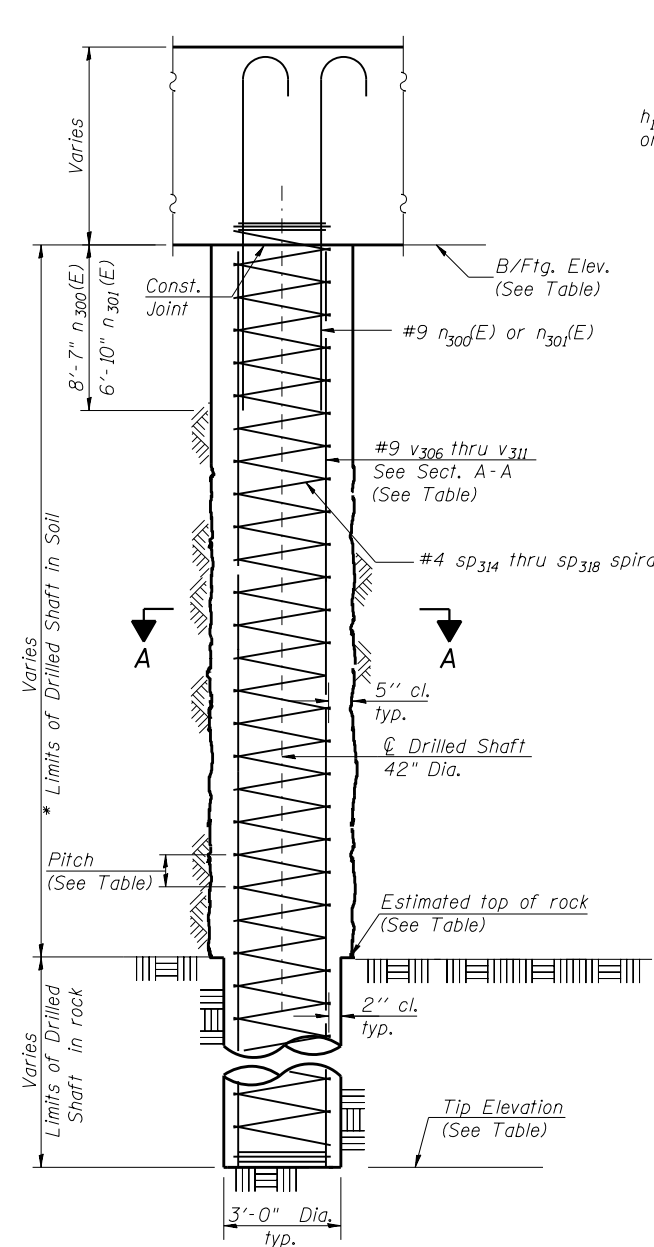
Bar	No.	Size	Length	Shape
n300(E)	588	#9	11'-6"	U
n301(E)	494	#9	9'-9"	U
SP314	16	#5	23'-8"	W
SP315	10	#5	23'-8"	W
SP316	54	#5	29'-8"	W
SP317	54	#5	27'-0"	W
SP318	18	#5	27'-0"	W
SP320	4	#5	29'-8"	W
v310	336	#9	26'-5"	—
v309	130	#9	25'-10"	—
v306	702	#9	31'-10"	—
v307	1134	#9	30'-9"	—
v308	234	#9	30'-0"	—
v311	84	#9	32'-5"	—

** Length is height of spiral.
Minimum lap for spirals = 2'-6"

BILL OF MATERIALS - SE RETAINING WALL

Bar	No.	Size	Length	Shape
h100(E)	291	#5	29'-8"	—
h101(E)	681	#5	32'-11"	—
h102(E)	900	#5	3'-11"	U
h103(E)	26	#5	28'-5"	—
h160(E)	234	#5	16'-3"	—
h161(E)	198	#5	16'-3"	—
n100(E)	44	#6	8'-6"	—
n101(E)	224	#5	8'-6"	—
n150(E)	61	#10	11'-1"	—
n151(E)	122	#9	12'-0"	U
n152(E)	551	#5	8'-0"	—
n153(E)	122	#8	16'-3"	—
n154(E)	61	#7	14'-10"	U
n155(E)	61	#8	12'-2"	U
n156(E)	61	#7	12'-5"	U
n157(E)	61	#6	10'-8"	U
n200(E)	468	#5	5'-3"	—
n201(E)	27	#7	8'-11"	U
n202(E)	27	#7	30'-4"	U
n203(E)	27	#7	8'-11"	U
n204(E)	27	#7	28'-0"	U
t100(E)	631	#5	15'-8"	—
t101(E)	118	#6	15'-8"	—
t102(E)	782	#7	15'-8"	—
t103(E)	180	#8	15'-8"	—
v100(E)	18	#5	25'-8"	—
v103(E)	18	#5	22'-11"	—
v110(E)	372	#5	25'-8"	—
v116(E)	99	#5	30'-6"	—
v117(E)	99	#5	27'-3"	—
v150(E)	31	#5	22'-8"	—
v151(E)	31	#5	21'-8"	—
v152(E)	31	#5	20'-8"	—
v153(E)	61	#8	23'-10"	—
v154(E)	61	#7	20'-8"	—
v155(E)	61	#7	19'-6"	—
v156(E)	31	#5	19'-6"	—
v157(E)	31	#5	18'-2"	—
v158(E)	31	#5	16'-10"	—
v159(E)	62	#6	12'-8"	—
v240(E)	31	#6	11'-3"	—
v241(E)	31	#5	10'-10"	—
v242(E)	31	#5	15'-4"	—
v243(E)	31	#5	13'-11"	—
v244(E)	31	#5	12'-6"	—
v245(E)	62	#5	10'-6"	—
v246(E)	62	#5	11'-0"	—
v247(E)	62	#5	9'-7"	—
v248(E)	60	#5	8'-2"	—
w110(E)	153	#5	31'-10"	—
w111(E)	17	#5	6'-7"	—
w112(E)	51	#5	6'-4"	—
w113(E)	51	#5	31'-4"	—
w114(E)	600	#5	33'-9"	—

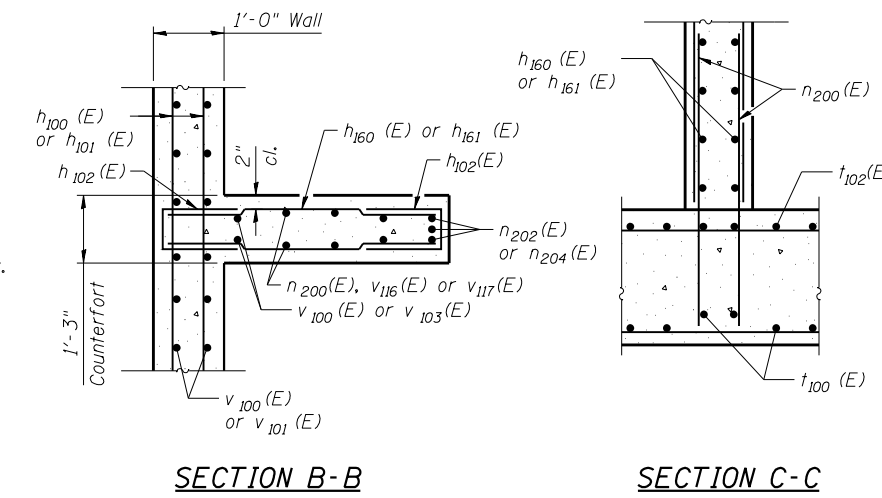
Structure Excavation	Cu. Yd.	2,125
Concrete Structures	Cu. Yd.	1623.6
Reinforcement Bars	Pounds	366,130
Reinforcement Bars, Epoxy Coated	Pounds	226,460



DRILLED SHAFT DETAILS

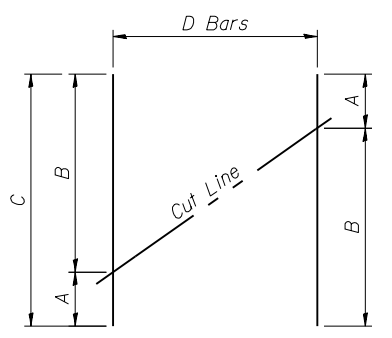
* The quantities and detailing are based on the estimated elevations shown on the plans. The actual elevations may differ at each shaft and corresponding adjustments shall be made to the drilled shaft and reinforcement quantities and payment limits.

** Provide 1/2 extra turns top and bottom of each drilled shaft. Extend spiral 2" into retaining wall footing. Provide min. 4- #4 spacers or equivalent.



SECTION B-B

SECTION C-C



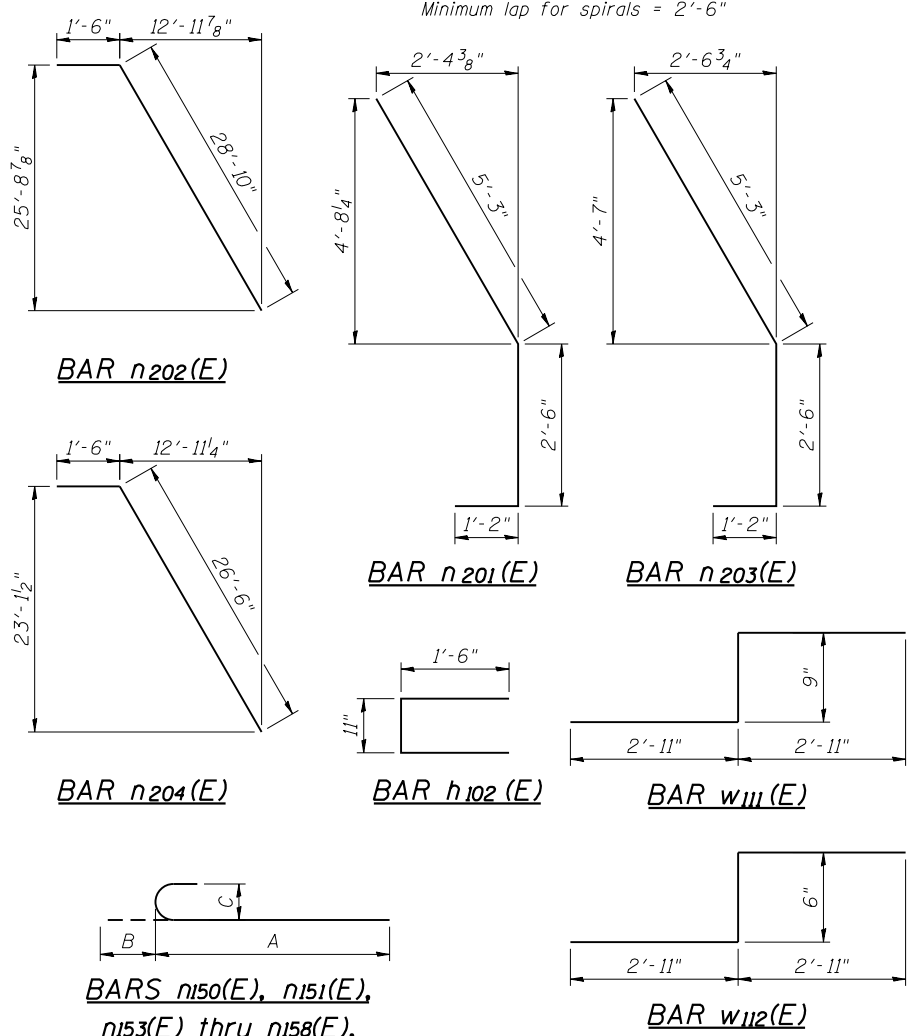
BAR CUTTING DIAGRAM

Order bars full length. Cut as shown and use remainder of bars in opposite face.

BAR	A	B	C	D
h160(E)	2'-1"	14'-2"	16'-3"	26
h161(E)	2'-1"	14'-2"	16'-3"	22
v116(E)	4'-10"	25'-8"	30'-6"	11
v117(E)	4'-4"	22'-11"	27'-3"	11

MINIMUM BAR LAP

#9 v307, v310 and v311 Bars = 5'-9"
#9 v306, v308 and v309 Bars = 4'-7"



DRILLED SHAFT SCHEDULE

Shaft Designation	No. Shafts	Bottom of Footing	Tip Elevation	Est. Top of Rock	Vertical Reinforcement	Spiral Reinforcement	Pitch	Dowel Bar Reinforcement	Total Length	Rock Socket Length
S8	8	707.00	660	633.8	21x2- #9 v310	1x2- #5 SP314	4"	21- #9 n300(E)	47.0	-
S10	5	707.00	660	633.8	13x2- #9 v309	1x2- #5 SP315	5 1/2"	13- #9 n301(E)	47.0	-
S11	27	707.00	648	633.8	13x2- #9 v306	1x2- #5 SP316	5 1/2"	13- #9 n301(E)	59.0	-
S12	18	707.00	626.5	633.8	21x3- #9 v307	1x3- #5 SP317	4"	21- #9 n300(E)	80.5	7.30'
S13	6	707.00	626.5	633.8	13x3- #9 v308	1x3- #5 SP318	5 1/2"	13- #9 n301(E)	80.5	7.30'
S14	2	707.00	648	633.8	21x2- #9 v311	1x2- #5 SP320	4"	21- #9 n300(E)	59.0	-

Notes:
See sheets SE-3 thru SE-8 for Drilled Shaft Locations.
See sheet NW-10 for Expansion Joint and Construction Joint Details.



USER NAME =	DESIGNED - KMP	REVISED
	CHECKED - AMK	REVISED
PLOT SCALE =	DRAWN - KMP	REVISED
PLOT DATE = 02/28/2014	CHECKED - AMK	REVISED

**STATE OF ILLINOIS
DEPARTMENT OF TRANSPORTATION**

**MISCELLANEOUS DETAILS
STRUCTURE NO. 022-W071**

SHEET NO. SE-9 OF SE-15 SHEETS

F.A.P. RTE.	SECTION	COUNTY	TOTAL SHEETS	SHEET NO.
311	652-A	DuPAGE	383	274
			CONTRACT NO. 60R06	
ILLINOIS FED. AID PROJECT				