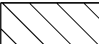




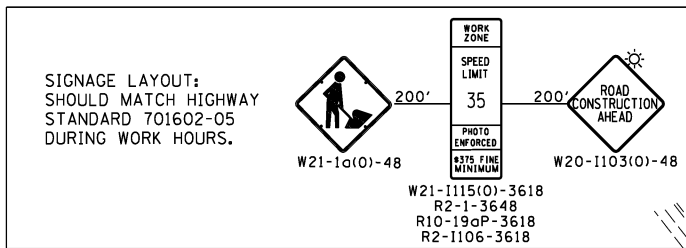


LEGEND

-  WORK AREA
-  PAVEMENT CONSTRUCTED IN STAGE
-  PAVEMENT CONSTRUCTED IN PREVIOUS STAGE
-  TEMPORARY PAVEMENT
-  HMA DRIVEWAY PAVEMENT, 4"

SIGNAGE LAYOUT:
SHOULD MATCH HIGHWAY
STANDARD 701602-05
DURING WORK HOURS.



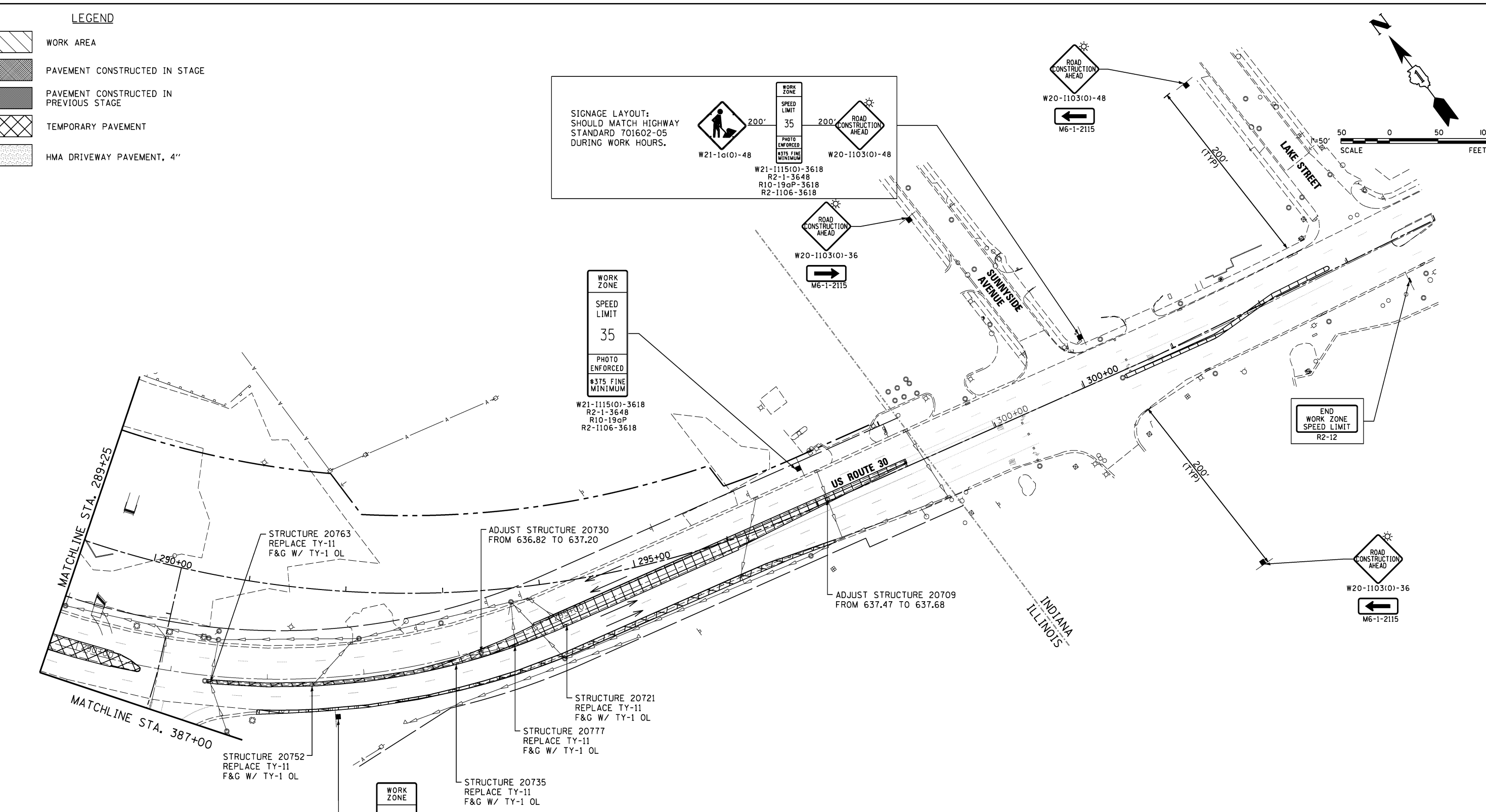
W21-1115(O)-3618
R2-1-3648
R10-19aP-3618
R2-1106-3618

WORK ZONE
SPEED LIMIT
35
PHOTO ENFORCED
#375 FINE MINIMUM

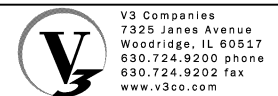
W21-1115(O)-3618
R2-1-3648
R10-19aP-3618
R2-1106-3618

WORK ZONE
SPEED LIMIT
35
PHOTO ENFORCED
#375 FINE MINIMUM

STA. 292+00
W21-1115(O)-3618
R2-1-3648
R10-19aP-3618
R2-1106-3618



- NOTES:
1. CONTRACTOR IS TO USE DAILY LANE CLOSURE TO CONSTRUCT TEMPORARY PAVEMENT AND MOST OF THE ADVANCED STORM SEWER. THE CONTRACTOR SHALL USE HIGHWAY STANDARD 701602
 2. CONTRACTOR TO REMOVE ALL CONFLICTING SIGNS BEFORE INSTALLING CONSTRUCTION SIGNS.
 3. DRUMS WITH STEADY BURN MONO-DIRECTIONAL LIGHT SHALL USE 50' C-C IN TYPICAL SECTIONS, 25' C-C IN CURVES AND RADII AND 20' C-C IN TAPERS.



USER NAME = hshsh	DESIGNED - DTE	REVISED -
PLOT SCALE = 50.0000' / 1in.	DRAWN - DRP	REVISED -
PLOT DATE = 8/21/2013	CHECKED - VJD	REVISED -
	DATE - 08/14/2013	REVISED -

**STATE OF ILLINOIS
DEPARTMENT OF TRANSPORTATION**

**MAINTENANCE OF TRAFFIC - PRE STAGE 1A
STATION 289+25 TO STATION 304+00**

SCALE: 1" = 50' SHEET NO. 4 OF 6 SHEETS STA. 289+25 TO STA. 304+00

F.A.P. RTE.	SECTION	COUNTY	TOTAL SHEETS	SHEET NO.
353	11-Y-A	COOK	354	49
CONTRACT NO. 60R19				
ILLINOIS FED. AID PROJECT				