

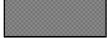



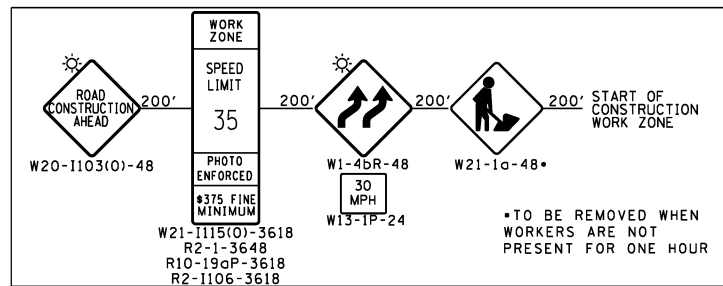
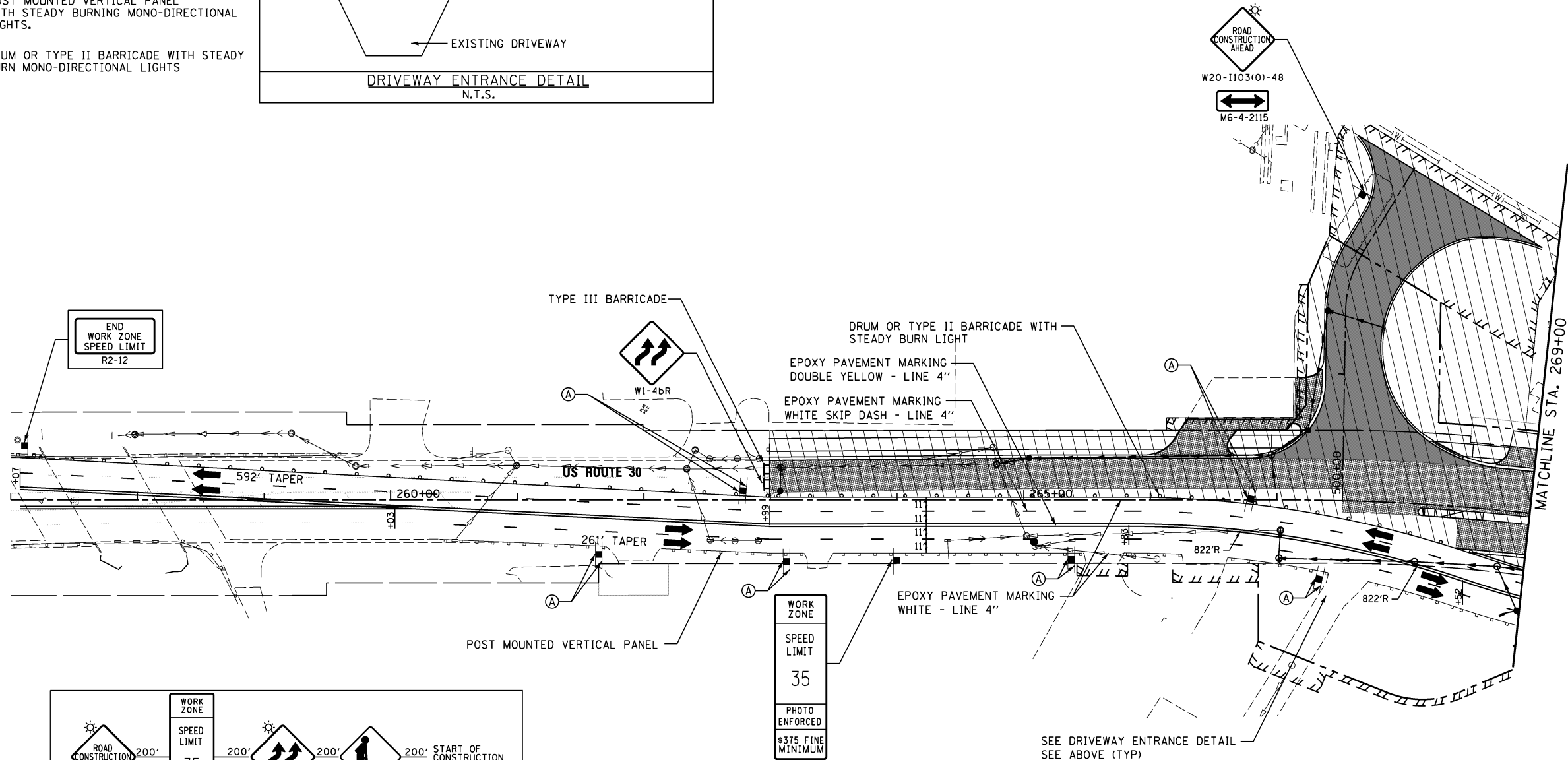
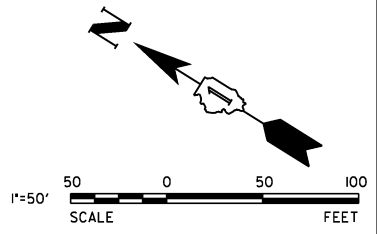
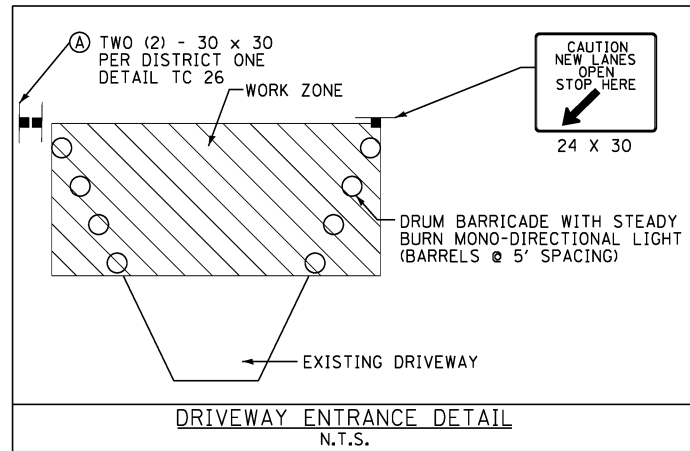


LEGEND

-  WORK AREA
-  PAVEMENT CONSTRUCTED IN STAGE
-  PAVEMENT CONSTRUCTED IN PREVIOUS STAGE
-  TEMPORARY PAVEMENT
-  POST MOUNTED VERTICAL PANEL WITH STEADY BURNING MONO-DIRECTIONAL LIGHTS.
-  DRUM OR TYPE II BARRICADE WITH STEADY BURN MONO-DIRECTIONAL LIGHTS



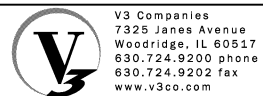
WORK
ZONE

SPEED
LIMIT
35

PHOTO
ENFORCED
\$375 FINE
MINIMUM
STA. 264+00
W21-1115(0)-3618
R2-1-3648
R10-19aP-3618
R2-1106-3618



30" x 30"
PER DISTRICT ONE DETAIL
TC 26



USER NAME = hshh	DESIGNED - DTE	REVISED -
PLOT SCALE = 50.0000' / in.	DRAWN - DRP	REVISED -
PLOT DATE = 8/21/2013	CHECKED - VJD	REVISED -
	DATE - 08/14/2013	REVISED -

**STATE OF ILLINOIS
DEPARTMENT OF TRANSPORTATION**

**MAINTENANCE OF TRAFFIC - STAGE 1 & STAGE 2
STATION 257+00 TO STATION 269+00**

SCALE: 1" = 50' SHEET NO. 1 OF 5 SHEETS STA. 257+00 TO STA. 269+00

F.A.P. RTE.	SECTION	COUNTY	TOTAL SHEETS	SHEET NO.
353	11-Y-A	COOK	354	52
CONTRACT NO. 60R19				
ILLINOIS FED. AID PROJECT				