




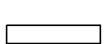

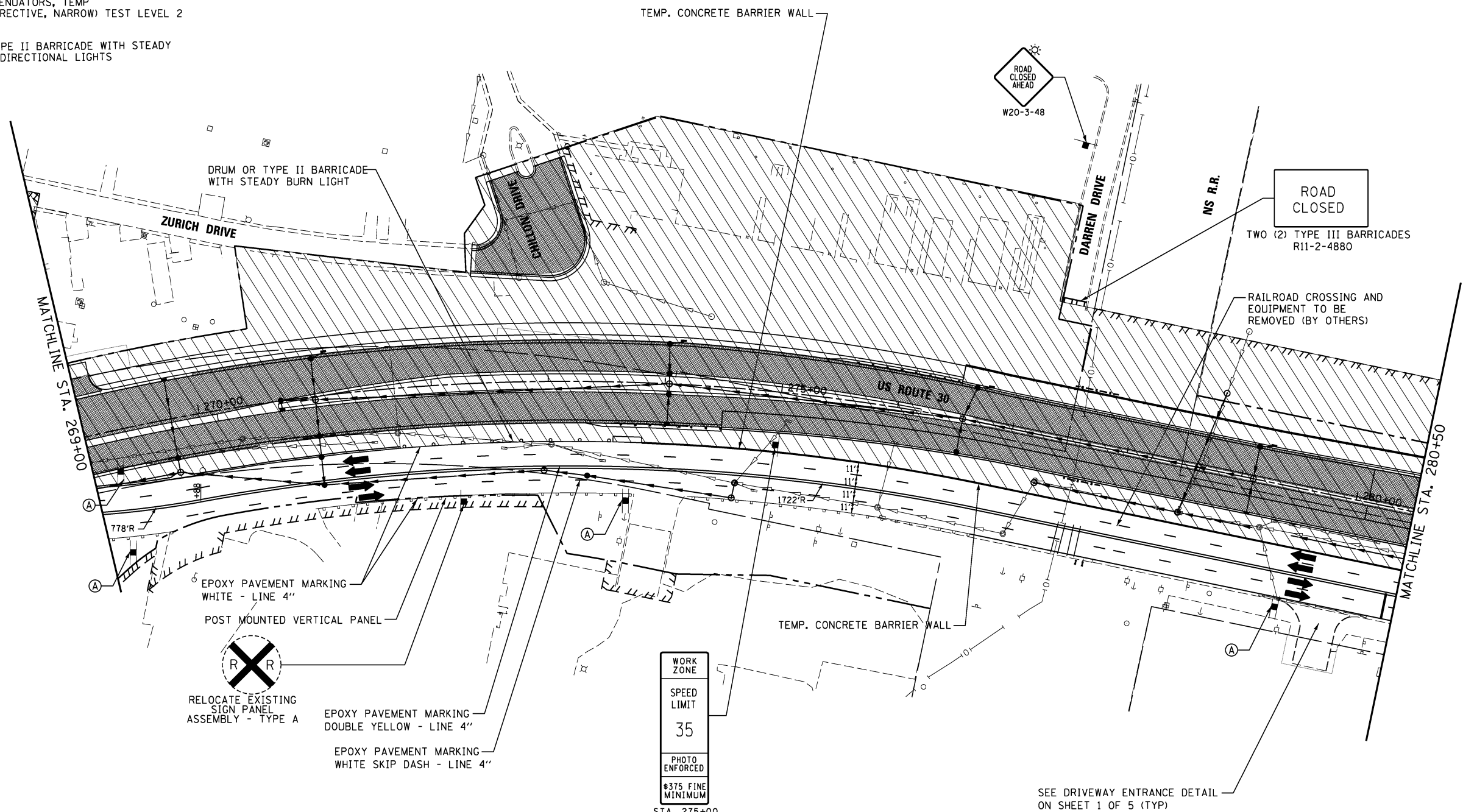
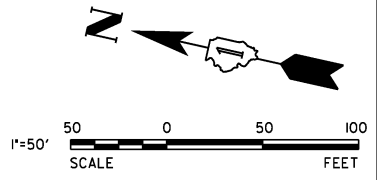


LEGEND

-  WORK AREA
-  PAVEMENT CONSTRUCTED IN STAGE
-  PAVEMENT CONSTRUCTED IN PREVIOUS STAGE
-  TEMPORARY PAVEMENT
-  POST MOUNTED VERTICAL PANEL
-  IMPACT ATTENUATORS, TEMP (FULLY REDIRECTIVE, NARROW) TEST LEVEL 2
-  DRUM OR TYPE II BARRICADE WITH STEADY BURN MONO-DIRECTIONAL LIGHTS



RELOCATE EXISTING SIGN PANEL ASSEMBLY - TYPE A

EPOXY PAVEMENT MARKING WHITE - LINE 4"

POST MOUNTED VERTICAL PANEL

EPOXY PAVEMENT MARKING DOUBLE YELLOW - LINE 4"

EPOXY PAVEMENT MARKING WHITE SKIP DASH - LINE 4"

WORK ZONE

SPEED LIMIT

35

PHOTO ENFORCED

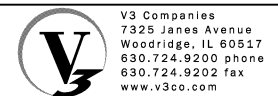
§375 FINE MINIMUM

STA. 275+00
W21-1115(0)-3618
R2-1-3648
R10-19aP-3618
R2-1106-3618

(A)

DRIVEWAY ENTRANCE

30" x 30" PER DISTRICT ONE DETAIL TC 26



| | | |
|------------------------------|-------------------|-----------|
| USER NAME = hshsh | DESIGNED - DTE | REVISED - |
| PLOT SCALE = 50.0000' / 1in. | DRAWN - DRP | REVISED - |
| PLOT DATE = 8/21/2013 | CHECKED - VJD | REVISED - |
| | DATE - 08/14/2013 | REVISED - |

**STATE OF ILLINOIS
DEPARTMENT OF TRANSPORTATION**

**MAINTENANCE OF TRAFFIC - STAGE 1 & STAGE 2
STATION 269+00 TO STATION 280+50**

SCALE: 1" = 50' SHEET NO. 2 OF 5 SHEETS STA. 269+00 TO STA. 280+50

| F.A.P. RTE. | SECTION | COUNTY | TOTAL SHEETS | SHEET NO. |
|---------------------------|---------|--------|--------------|-----------|
| 353 | 11-Y-A | COOK | 354 | 53 |
| CONTRACT NO. 60R19 | | | | |
| ILLINOIS FED. AID PROJECT | | | | |