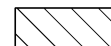

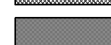


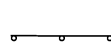
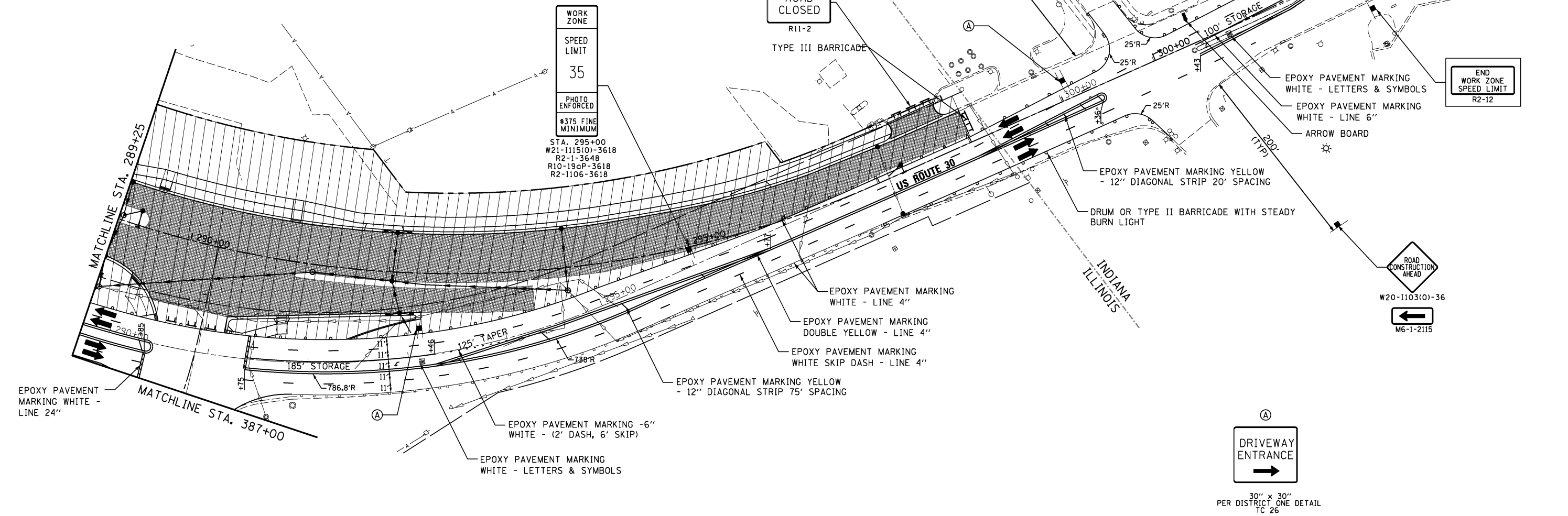
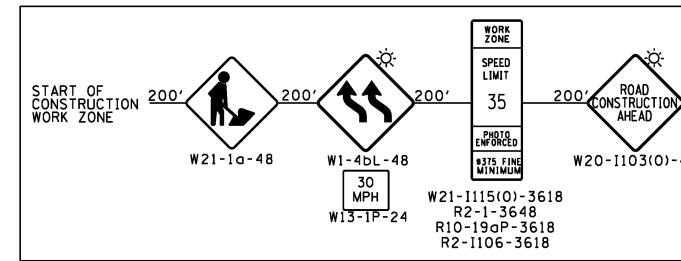


LEGEND

-  WORK AREA
-  PAVEMENT CONSTRUCTED IN STAGE
-  PAVEMENT CONSTRUCTED IN PREVIOUS STAGE
-  TEMPORARY PAVEMENT
-  POST MOUNTED VERTICAL PANEL
-  DRUM OR TYPE II BARRICADE WITH STEADY BURN MONO-DIRECTIONAL LIGHTS



V3 Companies
7325 Janes Avenue
Woodridge, IL 60517
630.724.9200 phone
630.724.9202 fax
www.v3co.com

USER NAME = hshah
PLOT SCALE = 50.0000' / 1" =
PLOT DATE = 8/21/2013

DESIGNED - DTE
DRAWN - DRP
CHECKED - VJD
DATE - 08/14/2013

REVISED -
REVISED -
REVISED -
REVISED -

**STATE OF ILLINOIS
DEPARTMENT OF TRANSPORTATION**

**MAINTENANCE OF TRAFFIC - STAGE 1 & STAGE 2
STATION 289+25 TO STATION 304+00**

SCALE: 1" = 50' SHEET NO. 4 OF 5 SHEETS STA. 289+25 TO STA. 304+00

F.A.P. RTE.	SECTION	COUNTY	TOTAL SHEETS	SHEET NO.
353	11-Y-A	COOK	354	55
CONTRACT NO. 60R19				
ILLINOIS FED. AID PROJECT				