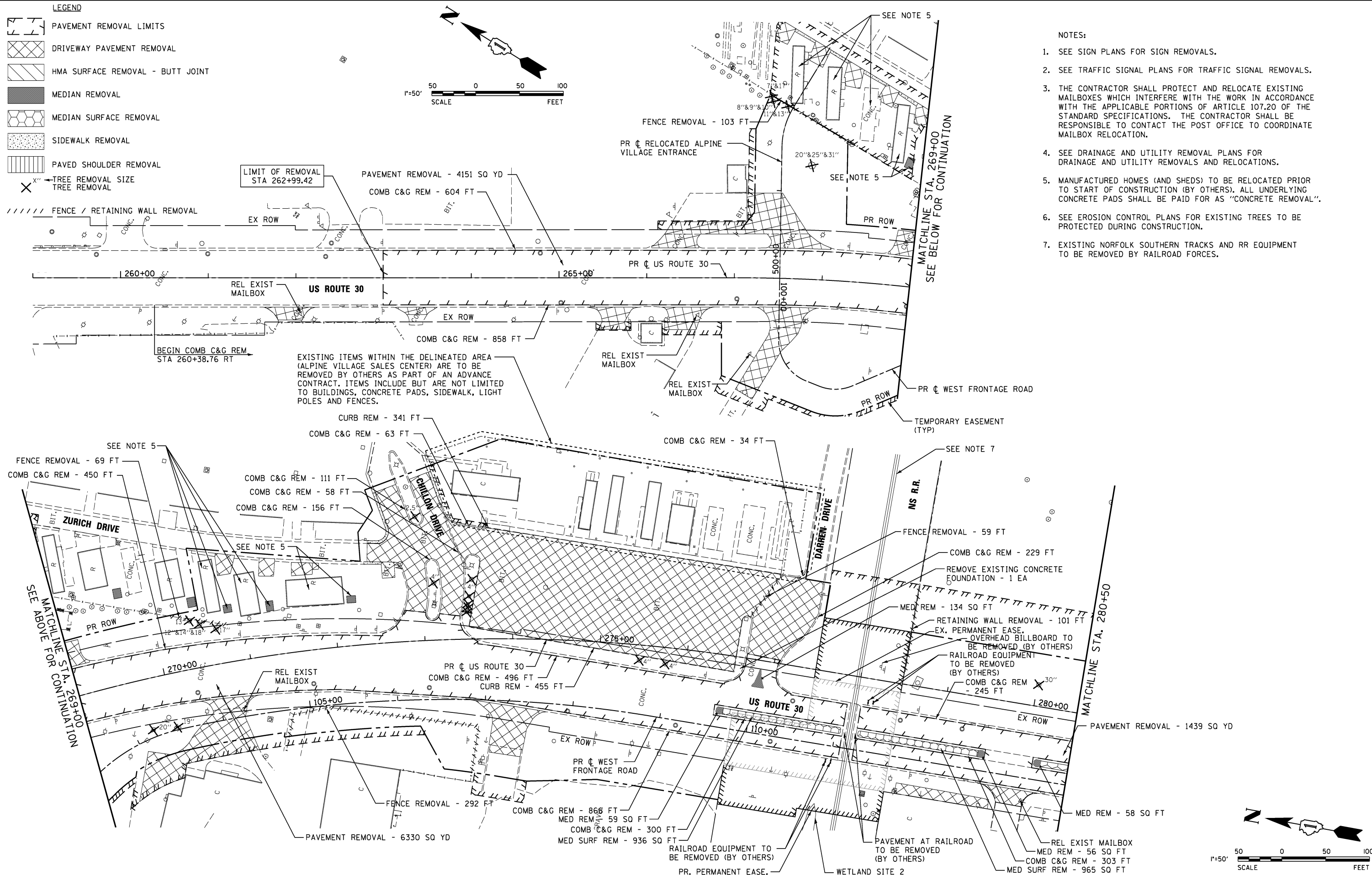
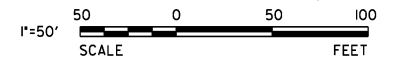


- LEGEND**
- PAVEMENT REMOVAL LIMITS
 - DRIVEWAY PAVEMENT REMOVAL
 - HMA SURFACE REMOVAL - BUTT JOINT
 - MEDIAN REMOVAL
 - MEDIAN SURFACE REMOVAL
 - SIDEWALK REMOVAL
 - PAVED SHOULDER REMOVAL
 - TREE REMOVAL SIZE
TREE REMOVAL
 - FENCE / RETAINING WALL REMOVAL



- NOTES:**
1. SEE SIGN PLANS FOR SIGN REMOVALS.
 2. SEE TRAFFIC SIGNAL PLANS FOR TRAFFIC SIGNAL REMOVALS.
 3. THE CONTRACTOR SHALL PROTECT AND RELOCATE EXISTING MAILBOXES WHICH INTERFERE WITH THE WORK IN ACCORDANCE WITH THE APPLICABLE PORTIONS OF ARTICLE 107.20 OF THE STANDARD SPECIFICATIONS. THE CONTRACTOR SHALL BE RESPONSIBLE TO CONTACT THE POST OFFICE TO COORDINATE MAILBOX RELOCATION.
 4. SEE DRAINAGE AND UTILITY REMOVAL PLANS FOR DRAINAGE AND UTILITY REMOVALS AND RELOCATIONS.
 5. MANUFACTURED HOMES (AND SHEDS) TO BE RELOCATED PRIOR TO START OF CONSTRUCTION (BY OTHERS). ALL UNDERLYING CONCRETE PADS SHALL BE PAID FOR AS "CONCRETE REMOVAL".
 6. SEE EROSION CONTROL PLANS FOR EXISTING TREES TO BE PROTECTED DURING CONSTRUCTION.
 7. EXISTING NORFOLK SOUTHERN TRACKS AND RR EQUIPMENT TO BE REMOVED BY RAILROAD FORCES.

V3 Companies
7325 Janes Avenue
Woodridge, IL 60517
630.724.9200 phone
630.724.9202 fax
www.v3co.com

USER NAME = hshsh
PLOT SCALE = 50.0000' / in.
PLOT DATE = 8/21/2013

DESIGNED - DTE
DRAWN - DRP
CHECKED - VJD
DATE - 08/14/2013

REVISED -
REVISED -
REVISED -
REVISED -

**STATE OF ILLINOIS
DEPARTMENT OF TRANSPORTATION**

**US ROUTE 30 REMOVAL PLANS - ROADWAY
STATION 259+00 TO STATION 280+50**

SCALE: 1" = 50' SHEET NO. 1 OF 3 SHEETS STA. 259+00 TO STA. 280+50

F.A.P. RTE.	SECTION	COUNTY	TOTAL SHEETS	SHEET NO.
353	11-Y-A	COOK	354	99
CONTRACT NO. 60R19				
ILLINOIS FED. AID PROJECT				