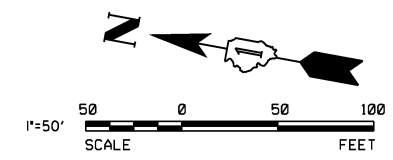
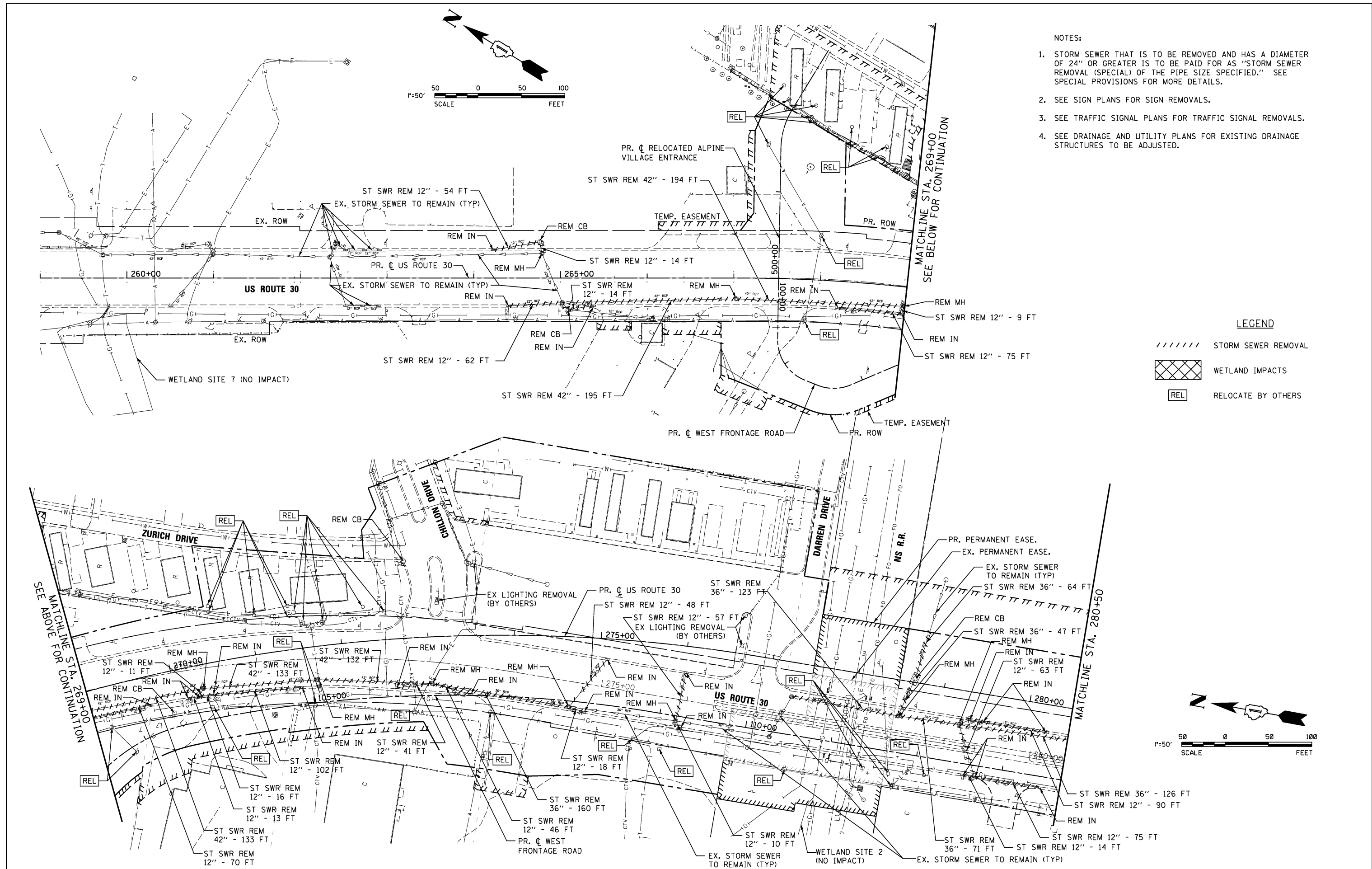
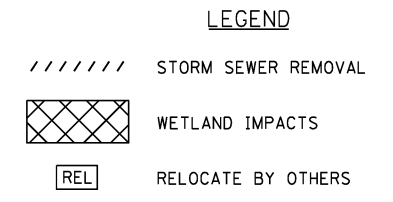


- NOTES:
1. STORM SEWER THAT IS TO BE REMOVED AND HAS A DIAMETER OF 24" OR GREATER IS TO BE PAID FOR AS "STORM SEWER REMOVAL (SPECIAL) OF THE PIPE SIZE SPECIFIED." SEE SPECIAL PROVISIONS FOR MORE DETAILS.
 2. SEE SIGN PLANS FOR SIGN REMOVALS.
 3. SEE TRAFFIC SIGNAL PLANS FOR TRAFFIC SIGNAL REMOVALS.
 4. SEE DRAINAGE AND UTILITY PLANS FOR EXISTING DRAINAGE STRUCTURES TO BE ADJUSTED.



V3 Companies
7325 Janes Avenue
Woodridge, IL 60517
630.724.9200 phone
630.724.9202 fax
www.v3co.com

USER NAME = hshah
DESIGNED - DTE
DRAWN - DRP
PLOT SCALE = 50.0000' / in.
CHECKED - VJD
DATE - 08/14/2013
PLOT DATE = 8/21/2013

REVISED -
REVISED -
REVISED -
REVISED -

STATE OF ILLINOIS
DEPARTMENT OF TRANSPORTATION

US ROUTE 30 REMOVAL PLANS - DRAINAGE & UTILITIES
STATION 259+00 TO STATION 280+50

SCALE: 1" = 50' SHEET NO. 1 OF 3 SHEETS STA. 259+00 TO STA. 280+50

F.A.P. RTE.	SECTION	COUNTY	TOTAL SHEETS	SHEET NO.
353	11-Y-A	COOK	354	109
CONTRACT NO. 60R19				
ILLINOIS FED. AID PROJECT				