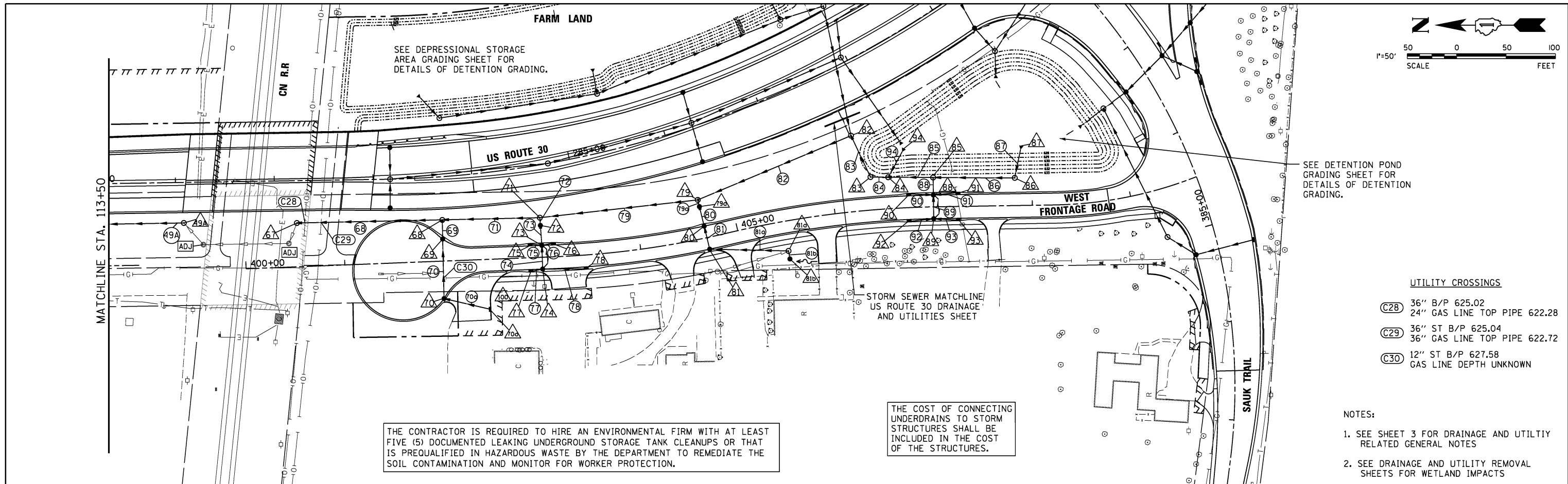


PLAN	SURVEYED	BY	DATE
	PLOTTED		
	GRADES CHECKED		
	STRUCTURE NOTATIONS CHECKED		
	NOTE BOOK NO.		
	CHECKED		
	ALIGNED		
	FILED		
	CARD FILE NAME		

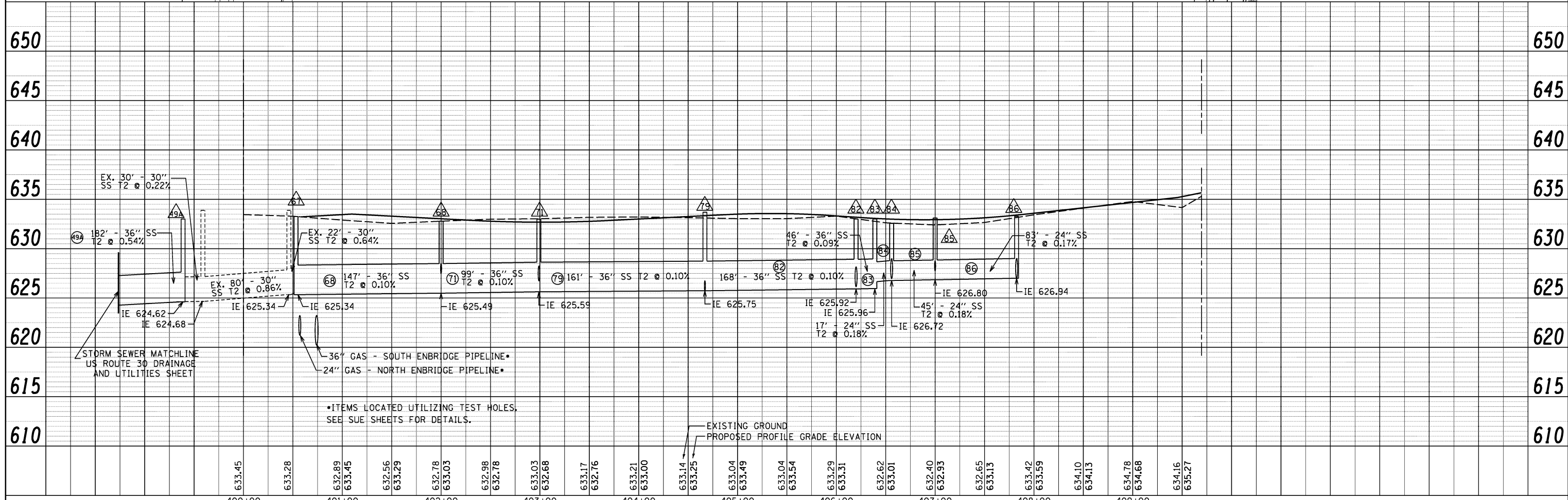
PROFILE	SURVEYED	BY	DATE
	PLOTTED		
	GRADES CHECKED		
	STRUCTURE NOTATIONS CHECKED		
	NOTE BOOK NO.		
	CHECKED		
	ALIGNED		
	FILED		
	CARD FILE NAME		



SEE DETENTION POND GRADING SHEET FOR DETAILS OF DETENTION GRADING.

- UTILITY CROSSINGS**
- (C28) 36" B/P 625.02
24" GAS LINE TOP PIPE 622.28
 - (C29) 36" ST B/P 625.04
36" GAS LINE TOP PIPE 622.72
 - (C30) 12" ST B/P 627.58
GAS LINE DEPTH UNKNOWN

- NOTES:**
1. SEE SHEET 3 FOR DRAINAGE AND UTILITY RELATED GENERAL NOTES
 2. SEE DRAINAGE AND UTILITY REMOVAL SHEETS FOR WETLAND IMPACTS



<p>V3 Companies 7325 Janes Avenue Woodridge, IL 60517 630.724.9200 phone 630.724.9202 fax www.v3co.com</p>	USER NAME = dsherman	DESIGNED - DTE	REVISED -	<p align="center">STATE OF ILLINOIS DEPARTMENT OF TRANSPORTATION</p>	<p align="center">WEST FRONTAGE ROAD - SOUTH DRAINAGE AND UTILITIES STATION 401+10 TO STATION 409+70</p>	F.A.P. RTE. 353	SECTION 11-Y-A	COUNTY COOK	TOTAL SHEETS 354	SHEET NO. 122
	PLOT SCALE = 50'	CHECKED - VJD	REVISED -			SCALE: 1" = 50'	SHEET NO. 11 OF 12 SHEETS	STA. 401+10 TO STA. 409+70	CONTRACT NO. 60R19	
	PLOT DATE = 3/13/2014	DATE - 03/14/2014	REVISED -							