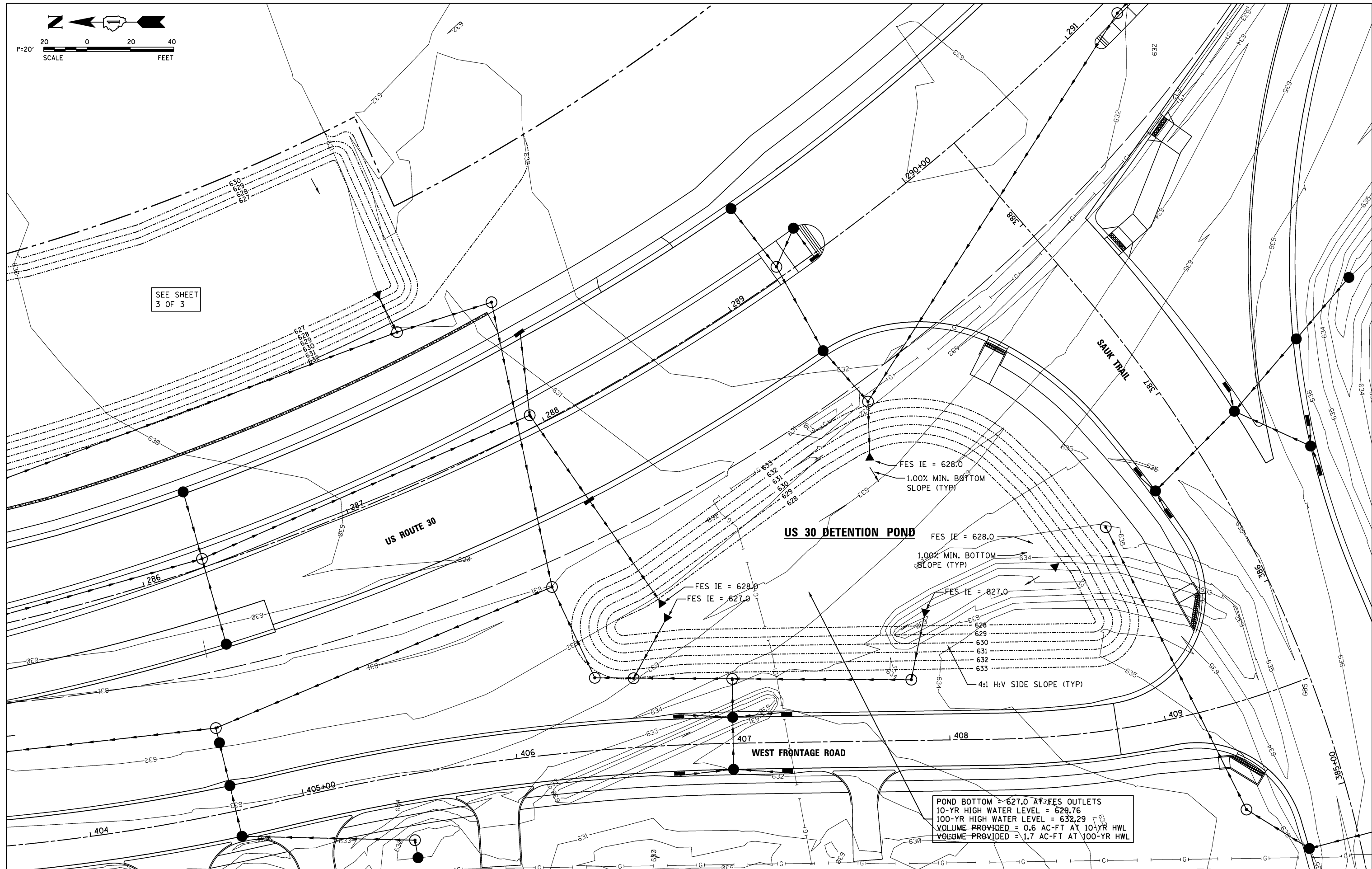
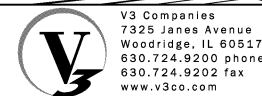


SEE SHEET
3 OF 3



POND BOTTOM = 627.0 AT FES OUTLETS
 10-YR HIGH WATER LEVEL = 629.76
 100-YR HIGH WATER LEVEL = 632.29
 VOLUME PROVIDED = 0.6 AC-FT AT 10-YR HWL
 VOLUME PROVIDED = 1.7 AC-FT AT 100-YR HWL



USER NAME = hshsh
 DESIGNED - DTE
 DRAWN - DRP
 CHECKED - VJD
 DATE - 08/14/2013
 PLOT SCALE = 20.0000' / 1"
 PLOT DATE = 8/21/2013

REVISED -
 REVISED -
 REVISED -
 REVISED -

**STATE OF ILLINOIS
 DEPARTMENT OF TRANSPORTATION**

DETENTION POND GRADING

SCALE: 1" = 20' SHEET NO. 2 OF 3 SHEETS

F.A.P. RTE.	SECTION	COUNTY	TOTAL SHEETS	SHEET NO.
353	11-Y-A	COOK	354	125
CONTRACT NO. 60R19				
ILLINOIS FED. AID PROJECT				