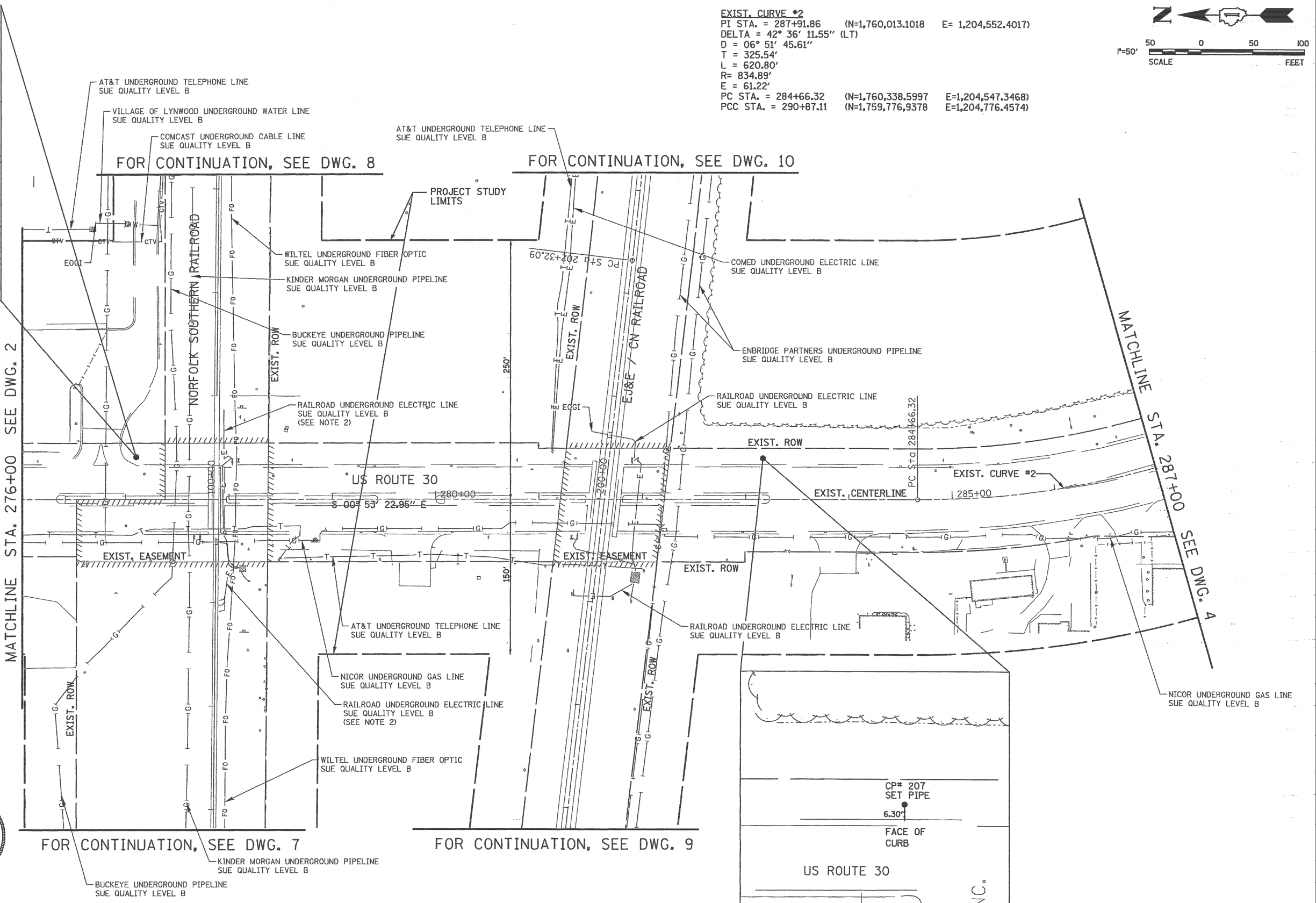
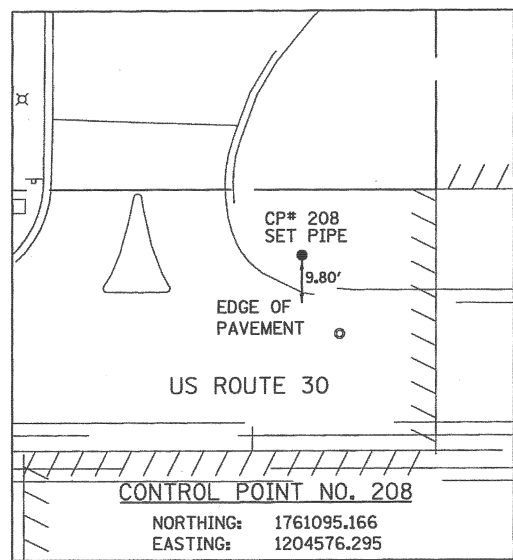


EXIST. CURVE #2  
 PI STA. = 287+91.86 (N=1,760,013.1018 E= 1,204,552.4017)  
 DELTA = 42° 36' 11.55" (LT)  
 D = 06° 51' 45.61"  
 T = 325.54'  
 L = 620.80'  
 R= 834.89'  
 E = 61.22'  
 PC STA. = 284+66.32 (N=1,760,338.5997 E=1,204,547.3468)  
 PCC STA. = 290+87.11 (N=1,759,776.9378 E=1,204,776.4574)



- LEGEND**
- T ——— EXISTING UNDERGROUND TELEPHONE
  - W ——— EXISTING UNDERGROUND WATER
  - E ——— EXISTING UNDERGROUND ELECTRIC
  - G ——— EXISTING UNDERGROUND GAS
  - CTV ——— EXISTING UNDERGROUND CABLE TV
  - FO ——— EXISTING UNDERGROUND FIBER OPTIC
  - SS ——— EXISTING UNDERGROUND SANITARY SEWER
  - EOGI ——— END OF SURFACE GEOPHYSICAL INFORMATION

STATE OF ILLINOIS )  
 ) S.S.  
 COUNTY OF COOK )

UTILITY(IES) SHOWN HEREON HAVE BEEN INVESTIGATED BY ASE IN ACCORDANCE WITH SUE INDUSTRY STANDARDS QUALITY LEVEL A (QLA) AND B (QLB). ALL OTHER INFORMATION SHOWN HAS BEEN PROVIDED BY OTHERS.

FIELD WORK WAS PERFORMED BETWEEN THE 25TH OF AUGUST AND 3RD DAY OF NOVEMBER, A.D., 2010.

IN WITNESS WHEREOF, I HAVE HEREUNTO SET MY HAND AND SEAL THIS 4TH DAY OF NOVEMBER A.D., 2010. CHICAGO, IL.



*Steven M. Rienks*  
 STEVEN M. RIENKS - ILLINOIS PROFESSIONAL ENGINEER NUMBER 62-044619  
 MY LICENSE EXPIRES 11/30/2011

- NOTES:**
- HORIZONTAL CONTROL, VERTICAL CONTROL, CENTERLINE ALIGNMENT, AND TOPOGRAPHIC FEATURES WERE SUPPLIED BY ILLINOIS DEPARTMENT OF TRANSPORTATION.
  - ELECTRIC UTILITIES SHOWN FOR THE NORFOLK SOUTHERN RAILROAD WERE DESIGNATED BY NORFOLK RAILROAD AND SURVEYED BY AMERICAN SURVEYING AND ENGINEERING.

**AMERICAN**  
 SURVEYING & ENGINEERING, P.C.  
 SURVEYORS - ENGINEERS  
 GEODESISTS - MAPPING SCIENTISTS

Chicago 312-277-2000 / Fax 312-277-2002  
 Dixon 815-288-6231 / Fax 815-288-6277  
 Aurora 603-697-4105 / Fax 630-697-4121  
 Illinois Professional Design Firm No. 184-003192

V3 Companies  
 7325 Janes Avenue  
 Woodridge, IL 60517  
 630.724.9200 phone  
 630.724.9202 fax  
 www.v3co.com

USER NAME = hshsh	DESIGNED - DTE	REVISED -
	DRAWN - DRP	REVISED -
PLOT SCALE = 50.0000' / in.	CHECKED - VJD	REVISED -
PLOT DATE = 8/21/2013	DATE - 08/14/2013	REVISED -

STATE OF ILLINOIS  
 DEPARTMENT OF TRANSPORTATION

SCALE: 1" = 50'	SHEET NO. 3 OF 12 SHEETS	STA. TO STA.
-----------------	--------------------------	--------------

F.A.P. RTE.	SECTION	COUNTY	TOTAL SHEETS	SHEET NO.
353	11-Y-A	COOK	354	129
CONTRACT NO. 60R19				
ILLINOIS FED. AID PROJECT				