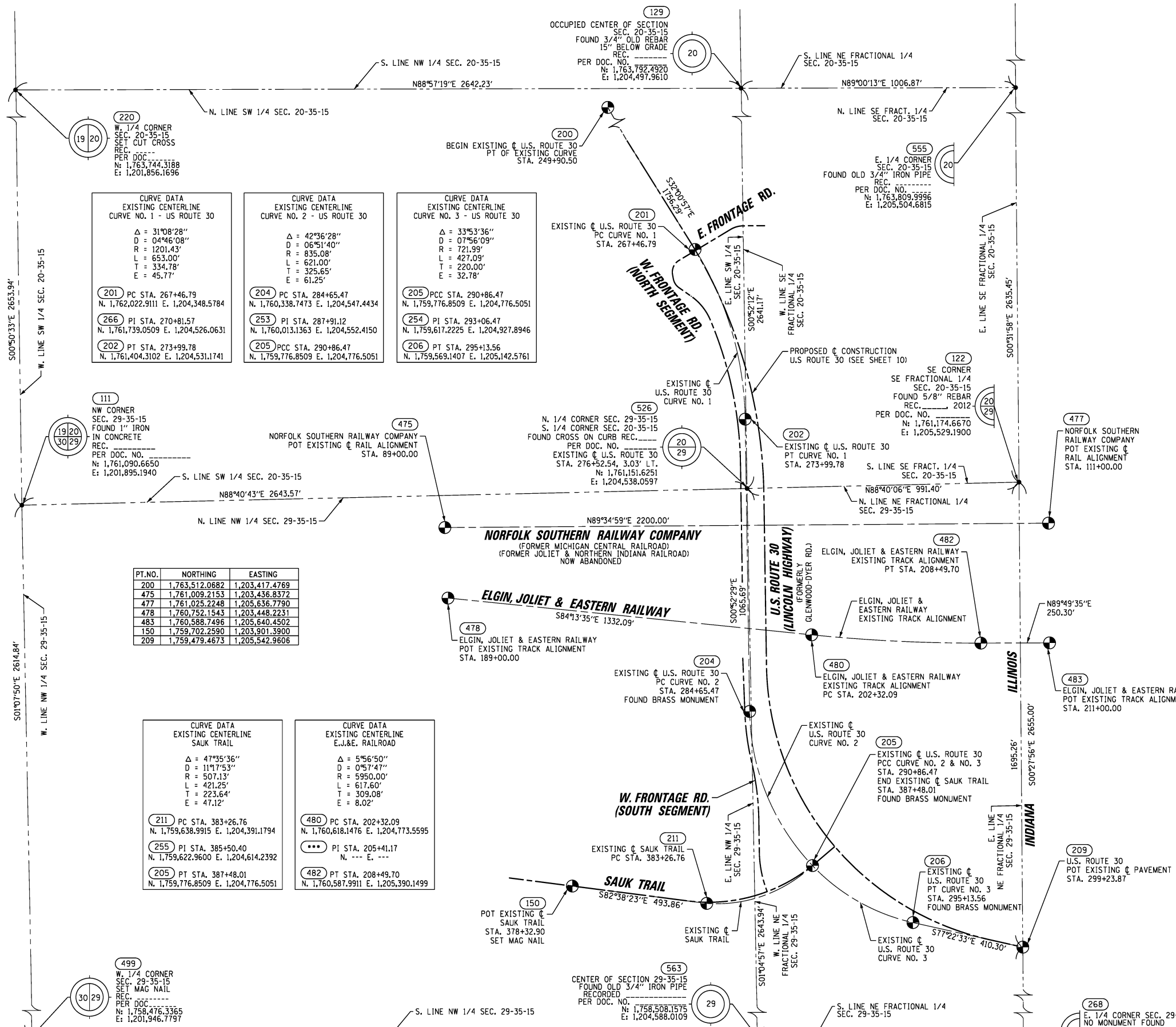


BEARINGS ARE BASED ON ILLINOIS STATE PLANE COORDINATE SYSTEM EAST ZONE, N.A.D. 83 (2007)



CURVE DATA
EXISTING CENTERLINE
CURVE NO. 1 - US ROUTE 30

Δ = 31°08'28"
D = 04°46'08"
R = 1201.43'
L = 653.00'
T = 334.78'
E = 45.77'

201 PC STA. 267+46.79
N. 1,762,022.9111 E. 1,204,348.5784

266 PI STA. 270+81.57
N. 1,761,739.0509 E. 1,204,526.0631

202 PT STA. 273+99.78
N. 1,761,404.3102 E. 1,204,531.1741

CURVE DATA
EXISTING CENTERLINE
CURVE NO. 2 - US ROUTE 30

Δ = 42°36'28"
D = 06°51'40"
R = 835.08'
L = 621.00'
T = 325.65'
E = 61.25'

204 PC STA. 284+65.47
N. 1,760,338.7473 E. 1,204,547.4434

253 PI STA. 287+91.12
N. 1,760,013.1363 E. 1,204,552.4150

205 PCC STA. 290+86.47
N. 1,759,776.8509 E. 1,204,776.5051

CURVE DATA
EXISTING CENTERLINE
CURVE NO. 3 - US ROUTE 30

Δ = 33°53'36"
D = 07°56'09"
R = 721.99'
L = 427.09'
T = 220.00'
E = 32.78'

205 PCC STA. 290+86.47
N. 1,759,776.8509 E. 1,204,776.5051

254 PI STA. 293+06.47
N. 1,759,617.2225 E. 1,204,927.8946

206 PT STA. 295+13.56
N. 1,759,569.1407 E. 1,205,142.5761

111 NW CORNER
SEC. 29-35-15
FOUND 1" IRON
IN CONCRETE
REC.-----
PER DOC. NO.-----
N: 1,761,090.6650
E: 1,201,895.1940

PT.NO.	NORTHING	EASTING
200	1,763,512.0682	1,203,417.4769
475	1,761,009.2153	1,203,436.8372
477	1,761,025.2248	1,205,636.7790
478	1,760,752.1543	1,203,448.2231
483	1,760,588.7496	1,205,640.4502
150	1,759,702.2590	1,203,901.3900
209	1,759,479.4673	1,205,542.9606

CURVE DATA
EXISTING CENTERLINE
SAUK TRAIL

Δ = 47°35'36"
D = 11°17'53"
R = 507.13'
L = 421.25'
T = 223.64'
E = 47.12'

211 PC STA. 383+26.76
N. 1,759,638.9915 E. 1,204,391.1794

255 PI STA. 385+50.40
N. 1,759,622.9600 E. 1,204,614.2392

205 PT STA. 387+48.01
N. 1,759,776.8509 E. 1,204,776.5051

CURVE DATA
EXISTING CENTERLINE
E.J.&E. RAILROAD

Δ = 5°56'50"
D = 0°57'47"
R = 5950.00'
L = 617.60'
T = 309.08'
E = 8.02'

480 PC STA. 202+32.09
N. 1,760,618.1476 E. 1,204,773.5595

PI STA. 205+41.17
N. --- E. ---

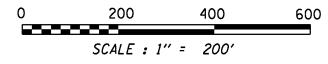
482 PT STA. 208+49.70
N. 1,760,587.9911 E. 1,205,390.1499

STATE OF ILLINOIS)
COUNTY OF WILL) SS

THIS IS TO CERTIFY THAT WE, CLAASSEN, WHITE & ASSOCIATES, P.C., AN ILLINOIS PROFESSIONAL DESIGN FIRM LAND SURVEYING CORPORATION NUMBER 184-004039, HAVE SURVEYED THE PLAT OF HIGHWAYS SHOWN HEREON IN SECTIONS 20 AND 29, TOWNSHIP 35 NORTH, RANGE 15 EAST OF THE THIRD PRINCIPAL MERIDIAN, COOK COUNTY, THAT THE SURVEY IS TRUE AND COMPLETE AS SHOWN TO THE BEST OF MY KNOWLEDGE AND BELIEF, THAT THE PLAT CORRECTLY REPRESENTS SAID SURVEY, THAT ALL MONUMENTS FOUND AND ESTABLISHED ARE OF PERMANENT QUALITY AND OCCUPY THE POSITIONS SHOWN THEREON AND THAT THE MONUMENTS ARE SUFFICIENT TO ENABLE THE SURVEY TO BE RETRACED. THIS SURVEY CONFORMS TO THE CURRENT ILLINOIS MINIMUM STANDARDS FOR A BOUNDARY SURVEY, MADE FOR THE DEPARTMENT OF TRANSPORTATION, STATE OF ILLINOIS.

DATED AT JOLIET, ILLINOIS THIS 16TH DAY OF AUGUST, 2013 A.D.

Rhonda J. White PRESIDENT
RHONDA J. WHITE
ILLINOIS PROFESSIONAL LAND SURVEYOR NO. 035-003306
LICENSE EXPIRES NOVEMBER 30, 2014
THIS PROFESSIONAL SERVICE CONFORMS TO THE CURRENT ILLINOIS MINIMUM STANDARDS FOR A BOUNDARY SURVEY.



NOTE:
COORDINATES BASED ON ILLINOIS STATE PLANE SYSTEM EAST ZONE, N.A.D. 83 (2007).
AVERAGE COMBINED SCALE FACTOR IS 1.00000361.

CWA SURVEY
CLAASSEN, WHITE & ASSOCIATES, P.C.
LAND SURVEYORS
121 AIRPORT DRIVE, UNIT 1, JOLIET, ILLINOIS 60431
(815) 744-3720 cclassenwhite@cwasurevey.com
CWA Job #5857

PLAT OF HIGHWAYS
STATE OF ILLINOIS
DEPARTMENT OF TRANSPORTATION
U.S. ROUTE 30

SECTION: @ CN RAILROAD COOK COUNTY
PROJECT JOB NO. R-90-017-11
STATION TO STATION
SCALE: 1" = 200' SHEET 11 OF 15

BUREAU OF LAND ACQUISITION
201 WEST CENTER COURT
SCHAMBURG, ILLINOIS 60196-1096

PRINTING DATE: AUGUST 16, 2013 JMH /Microstation/Sheet 11.dgn