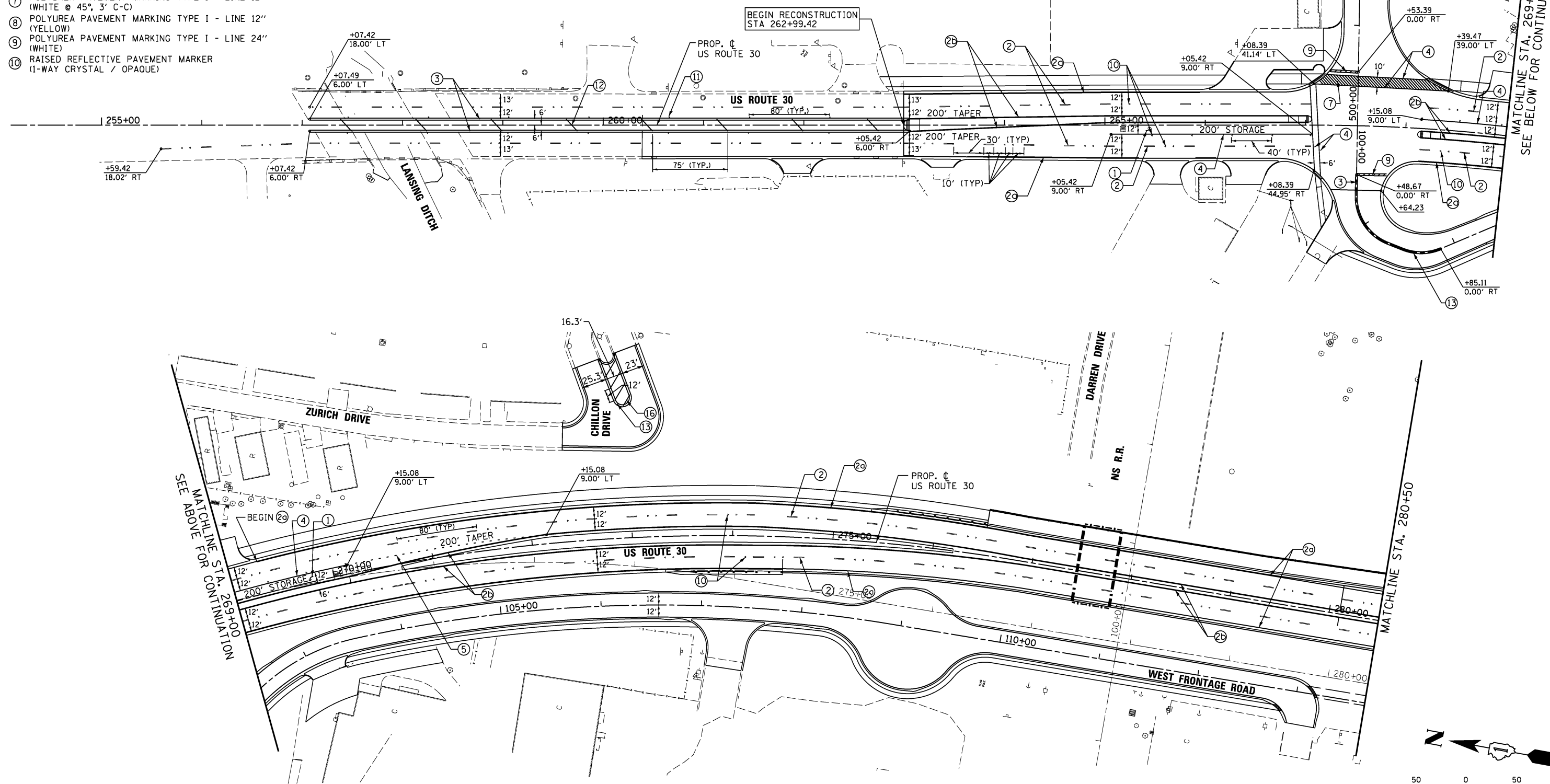
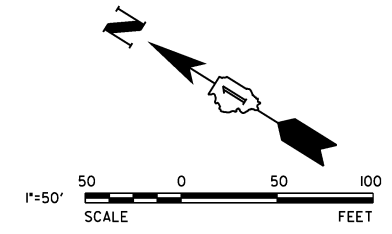


PROPOSED LEGEND

- ① POLYUREA PAVEMENT MARKING TYPE I - LETTERS AND SYMBOLS (WHITE)
- ② POLYUREA PAVEMENT MARKING TYPE I - LINE 4" (WHITE) (10' DASH, 30' SKIP)
- ③ POLYUREA PAVEMENT MARKING TYPE I - LINE 4" (WHITE)
- ④ POLYUREA PAVEMENT MARKING TYPE I - LINE 4" (YELLOW)
- ⑤ POLYUREA PAVEMENT MARKING TYPE I - LINE 4" (DOUBLE YELLOW @ 11' C-C)
- ⑥ POLYUREA PAVEMENT MARKING TYPE I - LINE 6" (WHITE)
- ⑦ POLYUREA PAVEMENT MARKING TYPE I - LINE 6" (WHITE) (2' DASH, 6' SKIP)
- ⑧ POLYUREA PAVEMENT MARKING TYPE I - LINE 8" (WHITE)
- ⑨ POLYUREA PAVEMENT MARKING TYPE I - LINE 12" (WHITE) (45°, 3' C-C)
- ⑩ POLYUREA PAVEMENT MARKING TYPE I - LINE 12" (YELLOW)
- ⑪ POLYUREA PAVEMENT MARKING TYPE I - LINE 24" (WHITE)
- ⑫ RAISED REFLECTIVE PAVEMENT MARKER (ONE-WAY AMBER)
- ⑬ POLYUREA PAVEMENT MARKING TYPE I - LINE 12" (YELLOW @ 45°, 75' C-C)
- ⑭ THERMOPLASTIC PAVEMENT MARKING - LINE 4" (DOUBLE YELLOW @ 11" C-C)
- ⑮ THERMOPLASTIC PAVEMENT MARKING - LETTERS AND SYMBOLS (WHITE)
- ⑯ PREFORMED PLASTIC PAVEMENT MARKING - LETTERS & SYMBOLS (INDIANA) (WHITE)
- ⑰ PREFORMED PLASTIC PAVEMENT MARKING - LINE 4" (INDIANA) (WHITE) (10' DASH, 30' SKIP)
- ⑱ PREFORMED PLASTIC PAVEMENT MARKING - LINE 4" (INDIANA) (DOUBLE YELLOW @ 11' C-C)
- ⑲ PREFORMED PLASTIC PAVEMENT MARKING - LINE 6" (INDIANA) (WHITE)
- ⑳ THERMOPLASTIC PAVEMENT MARKING - LINE 6" (WHITE) (2' DASH, 6' SKIP)
- ㉑ THERMOPLASTIC PAVEMENT MARKING - LINE 8" (WHITE)



V3 Companies
7325 Janes Avenue
Woodridge, IL 60517
630.724.9200 phone
630.724.9202 fax
www.v3co.com

USER NAME = *USER*
DESIGNED - DTE
DRAWN - DRP
CHECKED - VJD
DATE - 08/14/2013

REVISED -
REVISED -
REVISED -
REVISED -

**STATE OF ILLINOIS
DEPARTMENT OF TRANSPORTATION**

**US ROUTE 30 PAVEMENT MARKING PLANS
STATION 259+00 TO STATION 280+50**

SCALE: 1" = 50' SHEET NO. 1 OF 3 SHEETS STA. 259+00 TO STA. 280+50

F.A.P. RTE.	SECTION	COUNTY	TOTAL SHEETS	SHEET NO.
353	11-Y-A	COOK	354	156
CONTRACT NO. 60R19				
ILLINOIS FED. AID PROJECT				