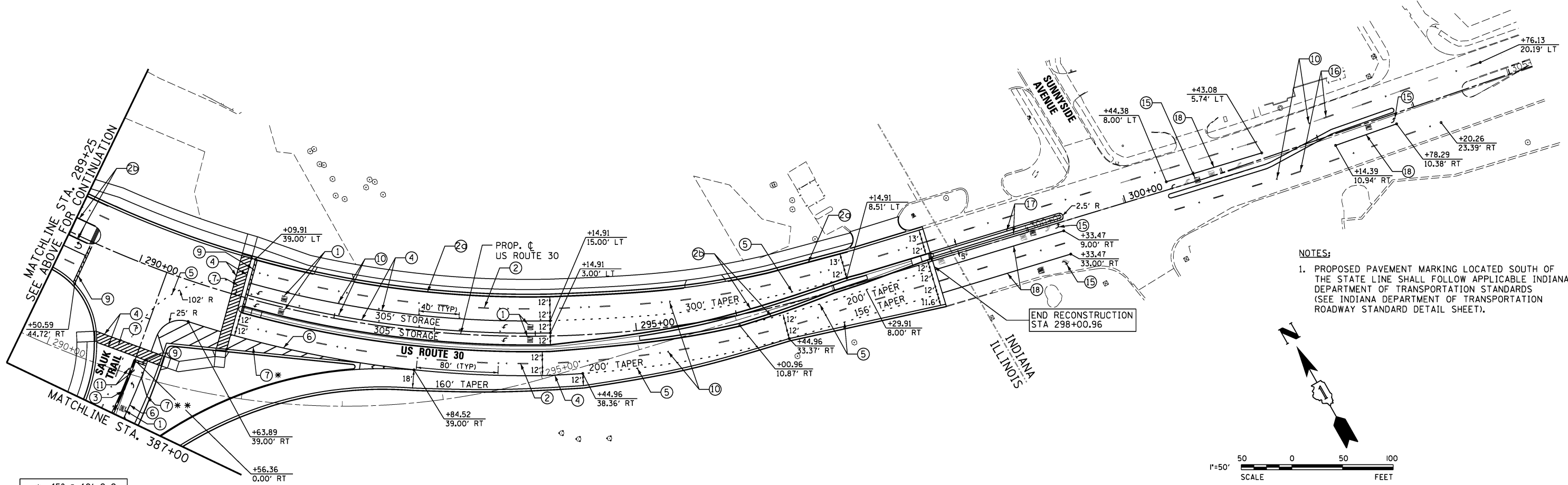
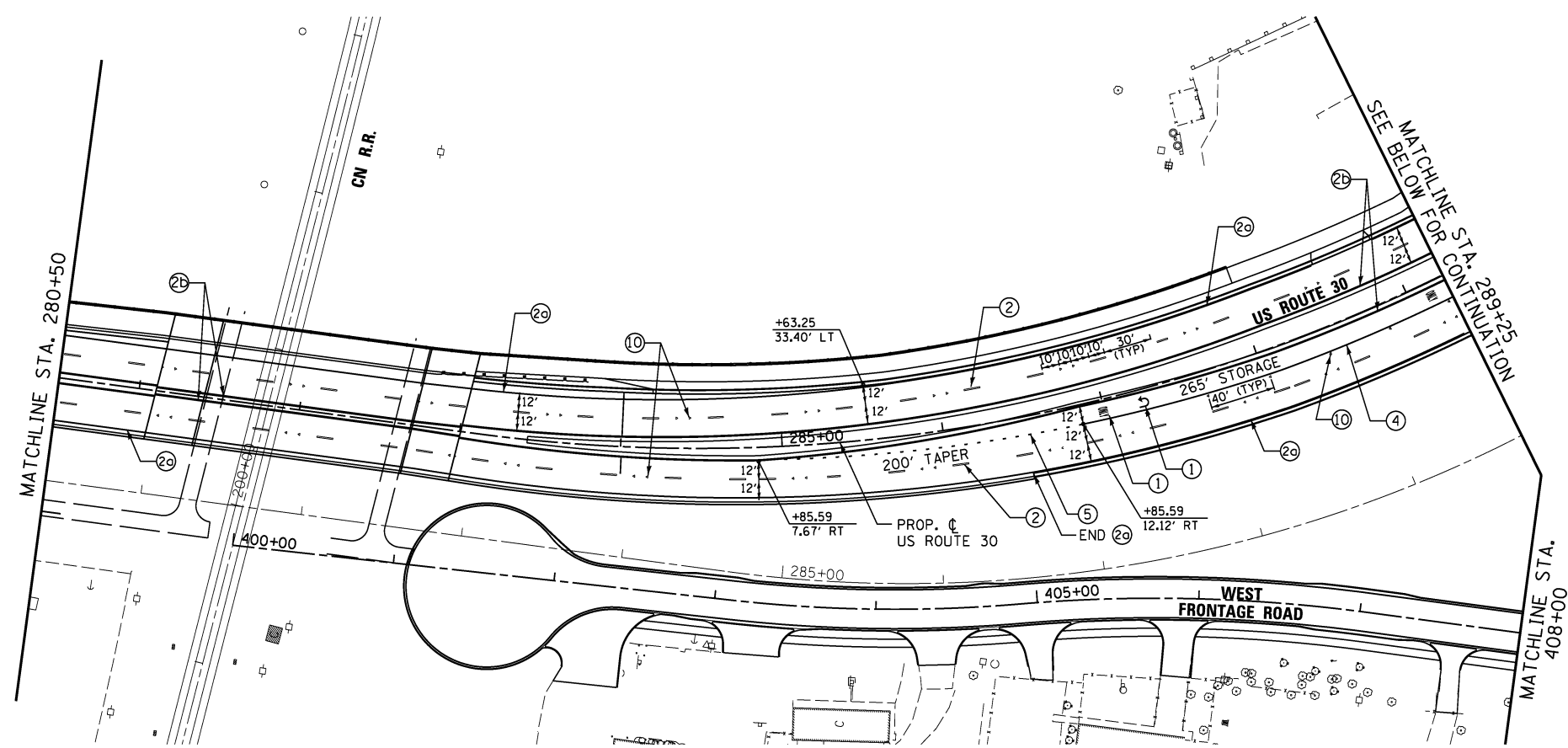
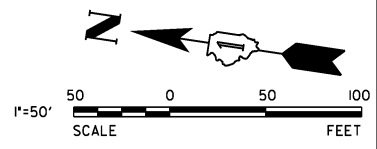


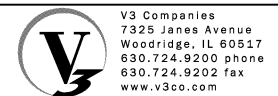
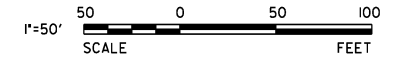
PROPOSED LEGEND

- ① POLYUREA PAVEMENT MARKING TYPE I - LETTERS AND SYMBOLS (WHITE)
- ② POLYUREA PAVEMENT MARKING TYPE I - LINE 4" (WHITE) (10' DASH, 30' SKIP)
- ③ POLYUREA PAVEMENT MARKING TYPE I - LINE 4" (WHITE)
- ④ POLYUREA PAVEMENT MARKING TYPE I - LINE 4" (YELLOW)
- ⑤ POLYUREA PAVEMENT MARKING TYPE I - LINE 4" (DOUBLE YELLOW @ 11' C-C)
- ⑥ POLYUREA PAVEMENT MARKING TYPE I - LINE 6" (WHITE)
- ⑦ POLYUREA PAVEMENT MARKING TYPE I - LINE 6" (WHITE) (2' DASH, 6' SKIP)
- ⑧ POLYUREA PAVEMENT MARKING TYPE I - LINE 8" (WHITE)
- ⑨ POLYUREA PAVEMENT MARKING TYPE I - LINE 12" (WHITE)
- ⑩ RAISED REFLECTIVE PAVEMENT MARKER (1-WAY CRYSTAL / OPAQUE)
- ⑪ RAISED REFLECTIVE PAVEMENT MARKER (TWO-WAY AMBER)
- ⑫ POLYUREA PAVEMENT MARKING TYPE I - LINE 12" (YELLOW @ 45°, 75' C-C)
- ⑬ THERMOPLASTIC PAVEMENT MARKING - LINE 4" (DOUBLE YELLOW @ 11" C-C)
- ⑭ THERMOPLASTIC PAVEMENT MARKING - LETTERS AND SYMBOLS (WHITE)
- ⑮ PREFORMED PLASTIC PAVEMENT MARKING - LETTERS & SYMBOLS (INDIANA) (WHITE)
- ⑯ PREFORMED PLASTIC PAVEMENT MARKING - LINE 4" (INDIANA) (WHITE) (10' DASH, 30' SKIP)
- ⑰ PREFORMED PLASTIC PAVEMENT MARKING - LINE 4" (INDIANA) (DOUBLE YELLOW @ 11' C-C)
- ⑱ PREFORMED PLASTIC PAVEMENT MARKING - LINE, 6" (INDIANA) (WHITE)



NOTES:
 1. PROPOSED PAVEMENT MARKING LOCATED SOUTH OF THE STATE LINE SHALL FOLLOW APPLICABLE INDIANA DEPARTMENT OF TRANSPORTATION STANDARDS (SEE INDIANA DEPARTMENT OF TRANSPORTATION ROADWAY STANDARD DETAIL SHEET).

* 45° @ 10' C-C
 ** 45° @ 25' C-C



V3 Companies
 7325 Janes Avenue
 Woodridge, IL 60517
 630.724.9200 phone
 630.724.9202 fax
 www.v3co.com

USER NAME = hshsh	DESIGNED - DTE	REVISED -
PLOT SCALE = 50.0000' / in.	DRAWN - DRP	REVISED -
PLOT DATE = 8/21/2013	CHECKED - VJD	REVISED -
	DATE - 08/14/2013	REVISED -

**STATE OF ILLINOIS
 DEPARTMENT OF TRANSPORTATION**

**US ROUTE 30 PAVEMENT MARKING PLANS
 STATION 280+50 TO STATION 301+00**

SCALE: 1" = 50' SHEET NO. 2 OF 3 SHEETS STA. 280+50 TO STA. 301+00

F.A.P. RTE.	SECTION	COUNTY	TOTAL SHEETS	SHEET NO.
353	11-Y-A	COOK	354	157
CONTRACT NO. 60R19				
ILLINOIS FED. AID PROJECT				