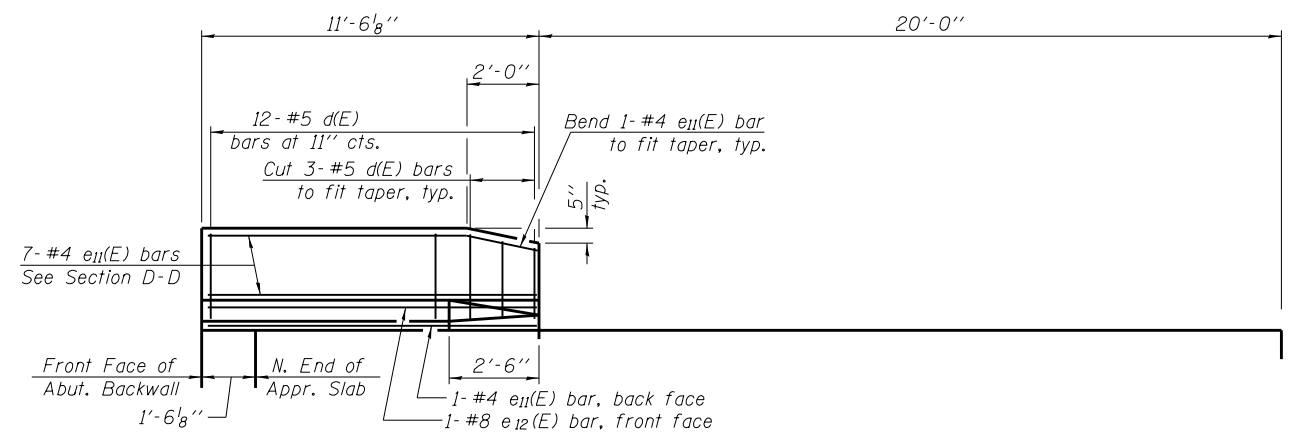
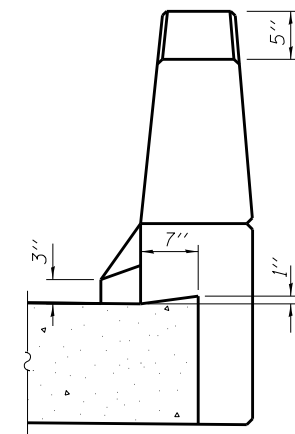


VIEW C-C



VIEW D-D



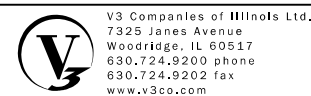
VIEW E-E

* Space between a7(E) bars.

MINIMUM BAR LAP

- #4 bar = 2'-7"
- #5 bar = 3'-3"

Notes:
See sheet 13 of 35 for Sections A-A & B-B.
a7(E) and a8(E) bar spacings measured along C Rdwy.
See sheet 10 of 35 for Parapet Joint Details.



USER NAME =	DESIGNED - WJV	REVISIONS
PLOT SCALE =	CHECKED - CJB	REVISIONS
PLOT DATE =	DRAWN - WJV	REVISIONS
	CHECKED - CJB	REVISIONS

STATE OF ILLINOIS
DEPARTMENT OF TRANSPORTATION

SOUTH APPROACH SLAB
STRUCTURE NO. 016-1350
SHEET NO. 12 OF 35 SHEETS

F.A.P. RTE.	SECTION	COUNTY	TOTAL SHEETS	SHEET NO.
353	11-Y-A	COOK	354	197
CONTRACT NO. 60R19				
ILLINOIS FED. AID PROJECT				