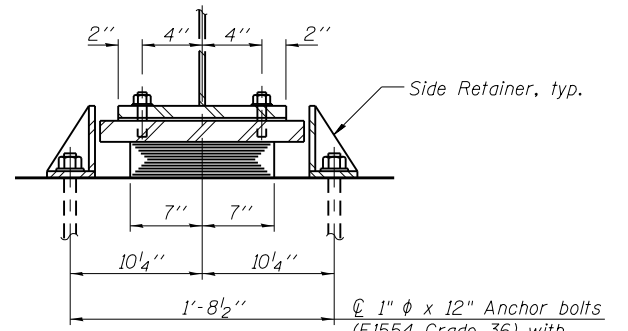
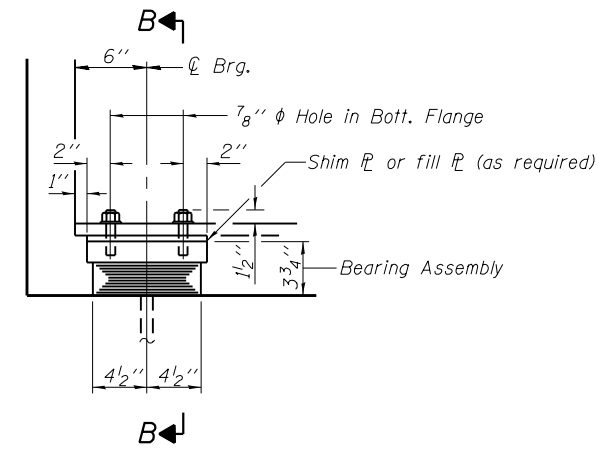


ELEVATION AT ABUT.

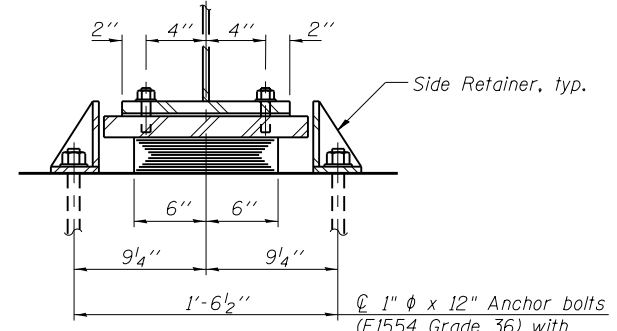


SECTION A-A

1"  $\phi$  x 12" Anchor bolts (F1554 Grade 36) with 2.4" x 2.4" x .56"  $\mathcal{P}$  washer under nut.



ELEVATION AT ABUT.



SECTION B-B

1"  $\phi$  x 12" Anchor bolts (F1554 Grade 36) with 2.4" x 2.4" x .56"  $\mathcal{P}$  washer under nut.

**TYPE I ELASTOMERIC EXP. BRG. AT NORTH ABUTMENT**

**TYPE I ELASTOMERIC EXP. BRG. AT SOUTH ABUTMENT**

**Notes:**

Anchor bolts shall be ASTM F1554 all-thread (or an Engineer-approved alternate material) of the grade(s) and diameter(s) specified. The corresponding specified grade of AASHTO M314 anchor bolts may be used in lieu of ASTM F1554.

Anchor bolts at fixed bearings may be either cast in place or installed in holes drilled after the supported member is in place.

Anchor bolts for side retainers may be cast in place or installed in holes drilled before or after members are in place.

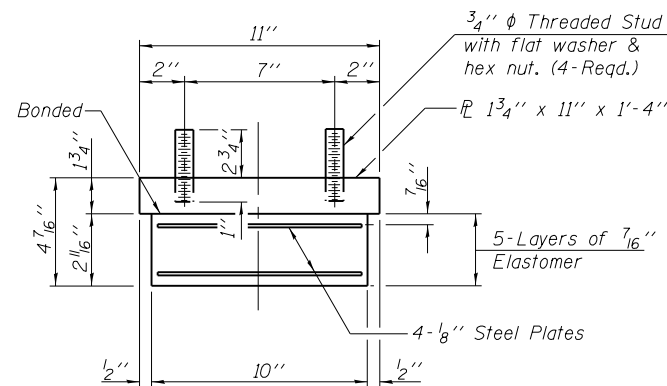
Drilled and set anchor bolts shall be installed according to Article 521.06 of the Standard Specifications.

Side retainers and other steel members required for the elastomeric bearing assembly shall be included in the cost of Elastomeric Bearing Assembly, Type I.

The structural steel plates of the Bearing Assembly shall conform to the requirements of AASHTO M 270 Grade 50.

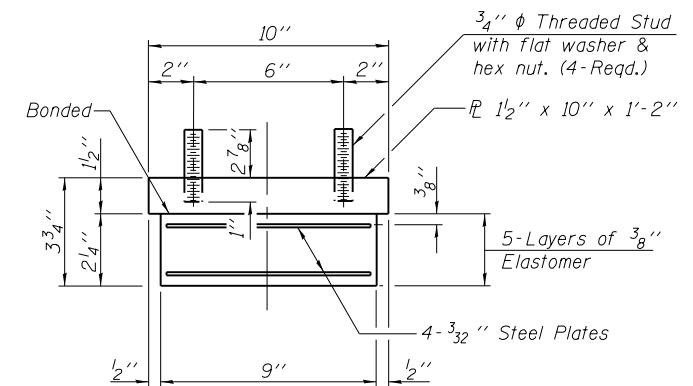
The Structural Steel plates of the fixed bearings, including pintles, shall conform to the requirements of AASHTO M 270 Grade 50.

Two 1/8" adjusting shims shall be provided for each bearing in addition to all other plates or shims and placed as shown on bearing details.



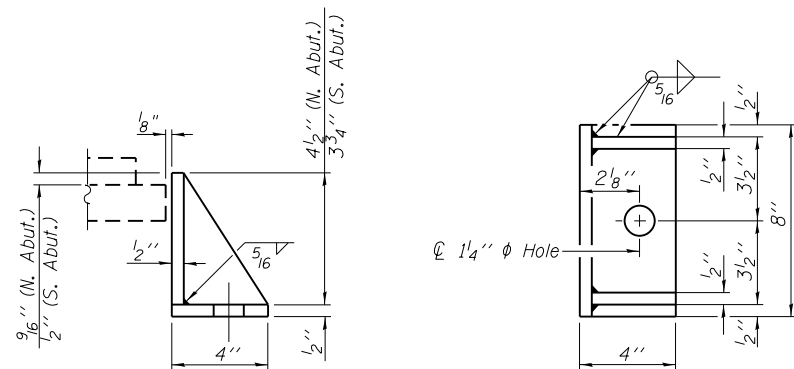
BEARING ASSEMBLY

Note: Shim plates shall not be placed under Bearing Assembly.



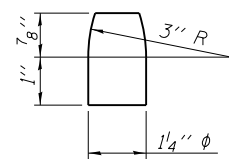
BEARING ASSEMBLY

Note: Shim plates shall not be placed under Bearing Assembly.

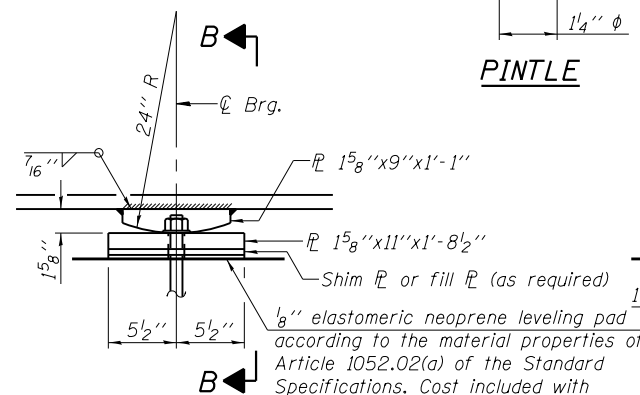


SIDE RETAINER

Equivalent rolled angle with stiffeners will be allowed in lieu of welded plates.

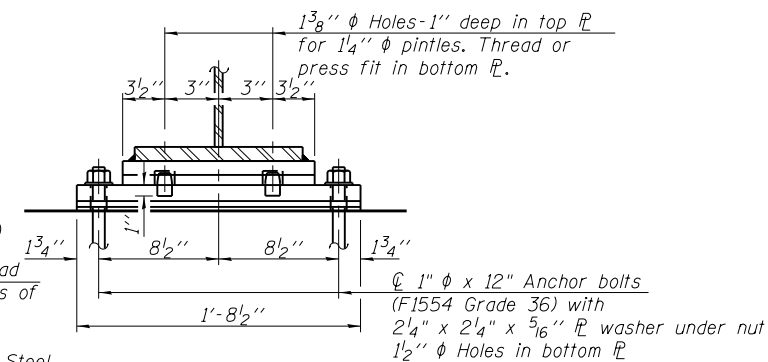


PINTLE



ELEVATION AT PIER

FIXED BEARING



SECTION B-B

**FILL PLATES**

	Beam 9
Pier	1/8"
South Abutment	1/8"

**BILL OF MATERIAL**

Item	Unit	Total
Elastomeric Bearing Assembly Type I	Each	26
Anchor Bolts, 1"	Each	78



USER NAME =	DESIGNED - WJV	REVISED
PLOT SCALE =	CHECKED - CJB	REVISED
PLOT DATE =	DRAWN - WJV	REVISED
	CHECKED - CJB	REVISED

STATE OF ILLINOIS  
DEPARTMENT OF TRANSPORTATION

BEARING DETAILS  
STRUCTURE NO. 016-1350  
SHEET NO. 19 OF 35 SHEETS

F.A.P. RTE.	SECTION	COUNTY	TOTAL SHEETS	SHEET NO.
353	11-Y-A	COOK	354	204
CONTRACT NO. 60R19				
ILLINOIS FED. AID PROJECT				