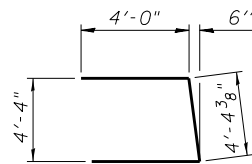
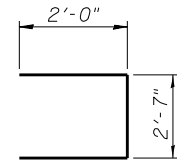


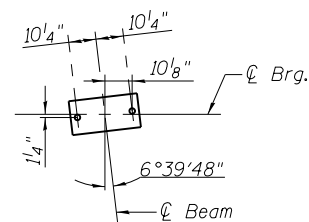
BAR s(E)



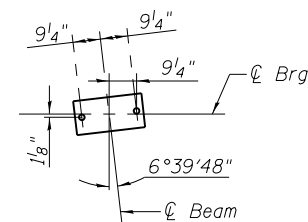
BAR u(E)



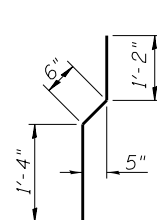
BAR u1(E)



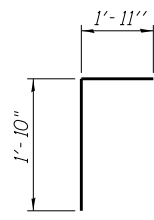
ANCHOR BOLT DETAIL I



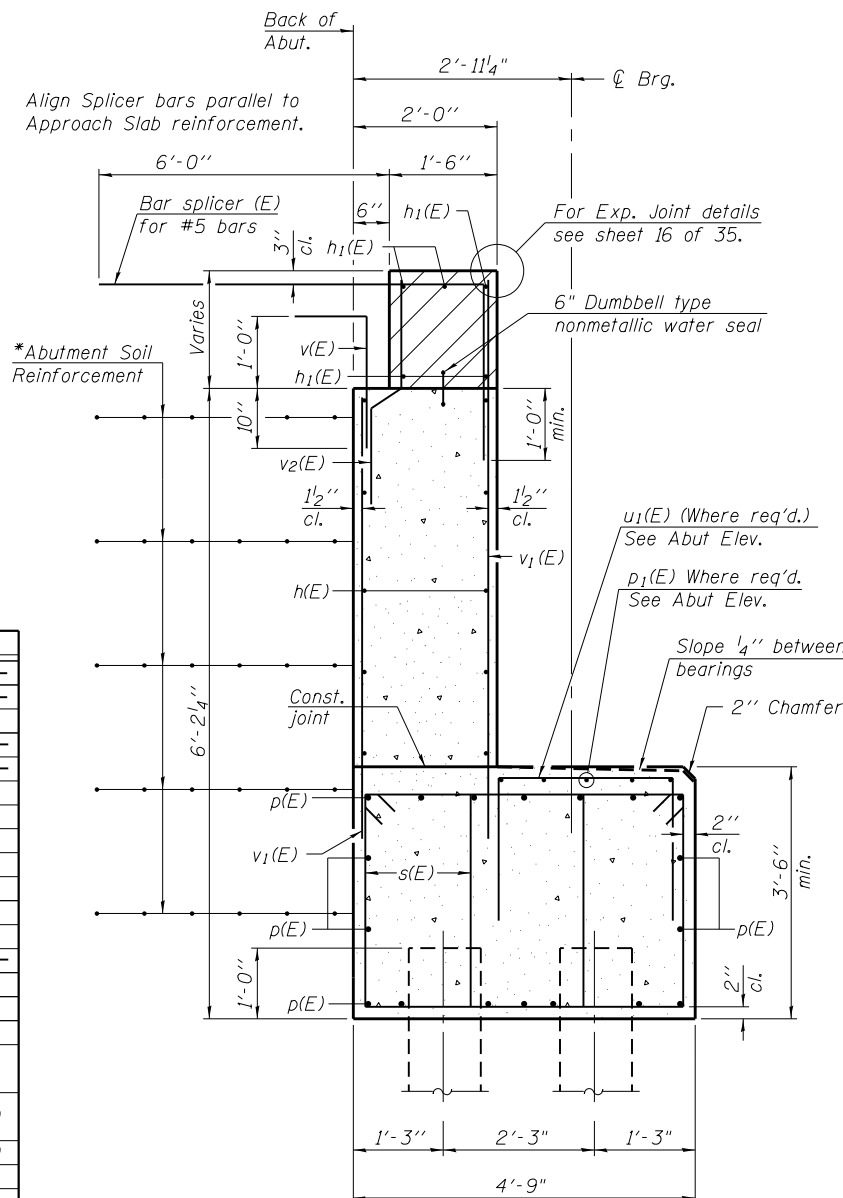
ANCHOR BOLT DETAIL II



BAR v2(E)

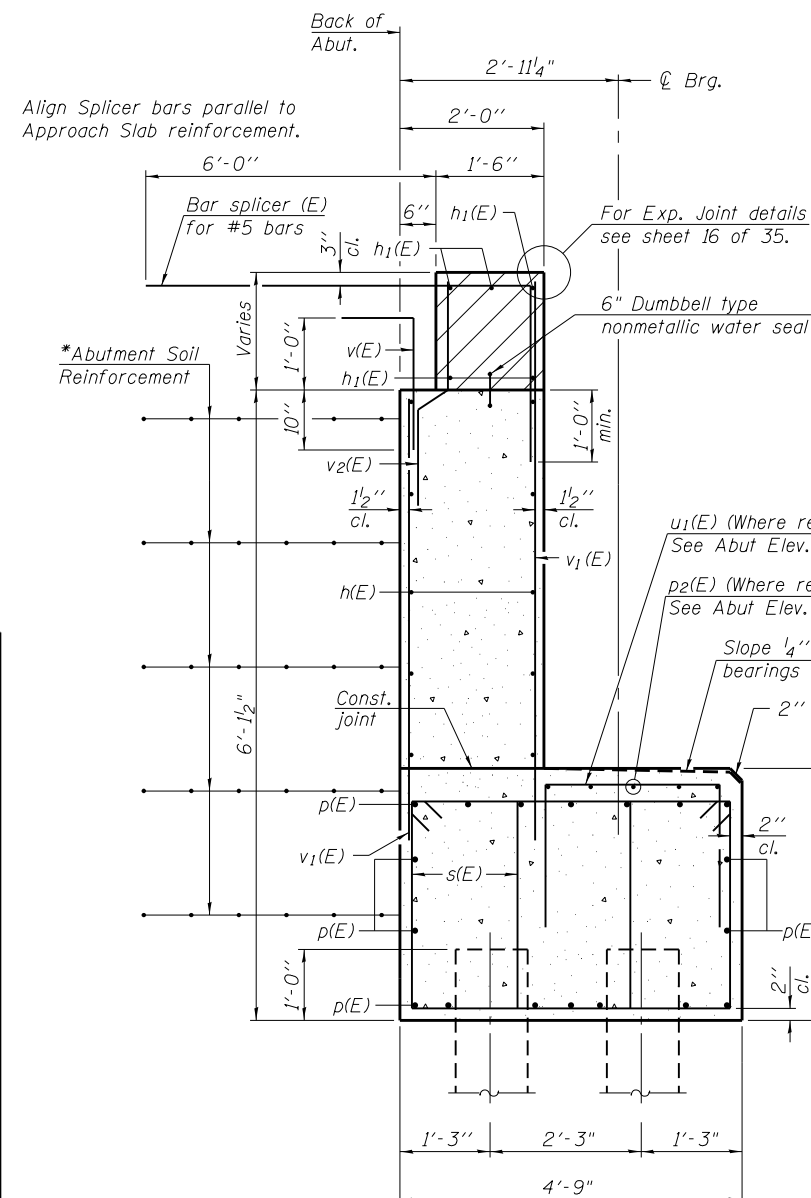


BAR v(E)



SEC. THRU NORTH ABUT.

(Horz. dim. @ Rt. L's)



SEC. THRU SOUTH ABUT.

(Horz. dim. @ Rt. L's)

**NORTH ABUTMENT
BILL OF MATERIAL**

Bar	No.	Size	Length	Shape
h(E)	16	#5	40'-8"	—
h1(E)	10	#6	41'-9"	—
p(E)	36	#7	41'-11"	—
p1(E)	5	#5	30'-9"	—
s(E)	132	#4	12'-11"	□
u(E)	8	#6	12'-5"	U
u1(E)	31	#5	6'-7"	U
v(E)	79	#5	3'-9"	┌
v1(E)	158	#5	5'-9"	—
v2(E)	79	#5	3'-0"	└
Concrete Structures		Cu. Yd.	65.9	
Concrete Superstructures		Cu. Yd.	7.2	
Reinforcement Bars, Epoxy Coated		Pound	7,560	
Furnishing Metal Shell Piles, 14" x 0.25"		Foot	1,020	
Driving Piles		Foot	1,020	
Test Pile, Metal Shells		Each	1	
Concrete Sealer		Sq. Ft.	662	

**SOUTH ABUTMENT
BILL OF MATERIAL**

Bar	No.	Size	Length	Shape
h(E)	16	#5	40'-8"	—
h1(E)	10	#6	41'-9"	—
p(E)	36	#7	41'-11"	—
p2(E)	5	#5	36'-11"	—
s(E)	132	#4	12'-11"	□
u(E)	8	#6	12'-5"	U
u1(E)	38	#5	6'-7"	U
v(E)	79	#5	3'-9"	┌
v1(E)	158	#5	5'-9"	—
v2(E)	79	#5	3'-0"	└
Concrete Structures		Cu. Yd.	66.0	
Concrete Superstructures		Cu. Yd.	7.5	
Reinforcement Bars, Epoxy Coated		Pound	7,640	
Furnishing Metal Shell Piles, 14" x 0.25"		Foot	888	
Driving Piles		Foot	888	
Test Pile, Metal Shells		Each	1	
Concrete Sealer		Sq. Ft.	670	

Notes:
Hatched area to be poured after superstructure forms have been removed. Quantity of concrete included with Concrete Superstructure.
See sheet 25 of 35 for details of Bar Splicers.

* The MSE wall supplier shall design the abutment reinforcement to resist a factored horizontal force of 3.16 k/foot of abutment. Cost included with Mechanically Stabilized Earth Retaining Wall.



USER NAME =	DESIGNED - WJV	REVISED
PLOT SCALE =	CHECKED - CJB	REVISED
PLOT DATE =	DRAWN - WJV	REVISED
	CHECKED - CJB	REVISED

STATE OF ILLINOIS
DEPARTMENT OF TRANSPORTATION

ABUTMENT DETAILS
STRUCTURE NO. 016-1350
SHEET NO. 22 OF 35 SHEETS

F.A.P. RTE.	SECTION	COUNTY	TOTAL SHEETS	SHEET NO.
353	11-Y-A	COOK	354	207
CONTRACT NO. 60R19				
ILLINOIS FED. AID PROJECT				