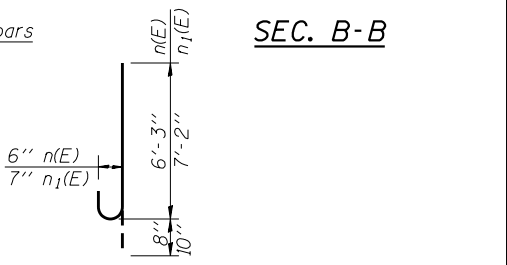
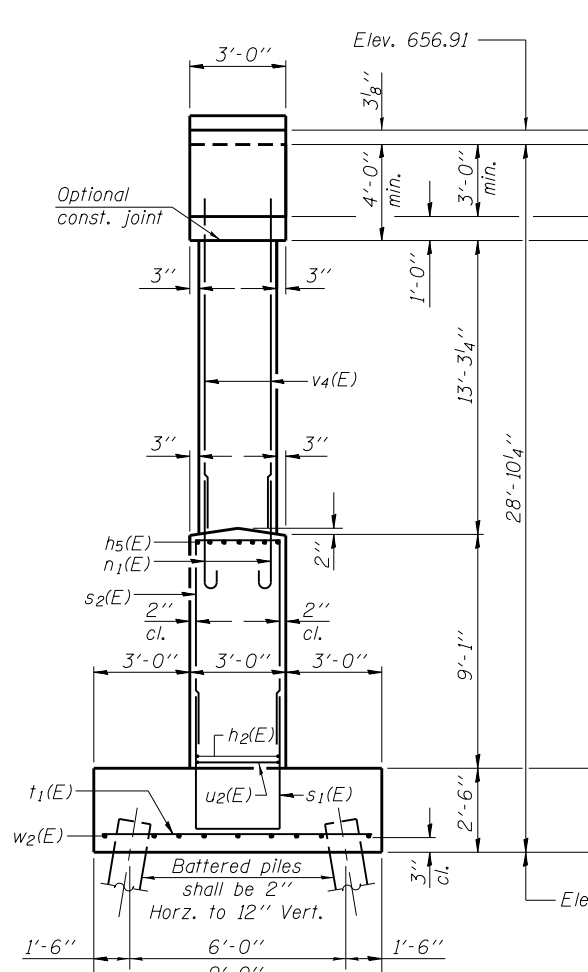
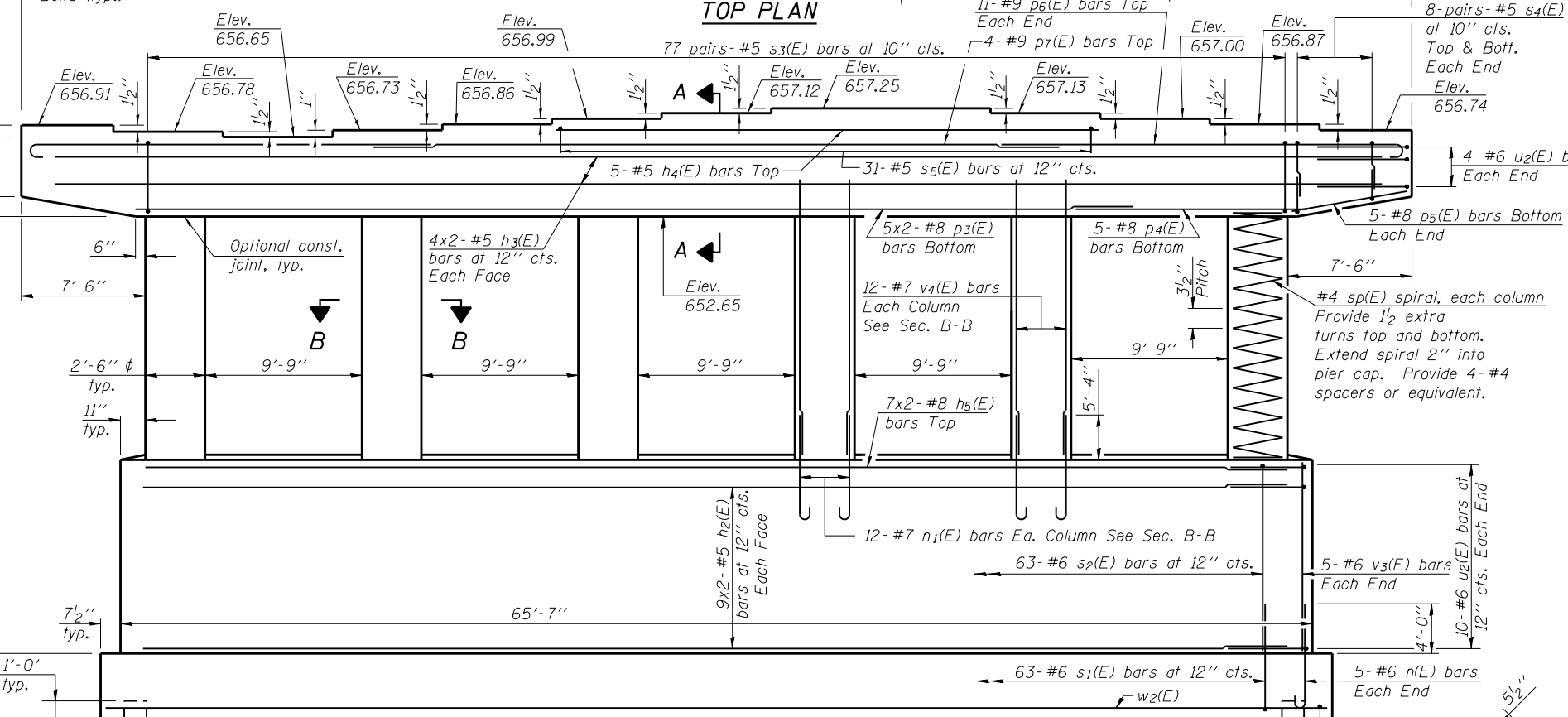
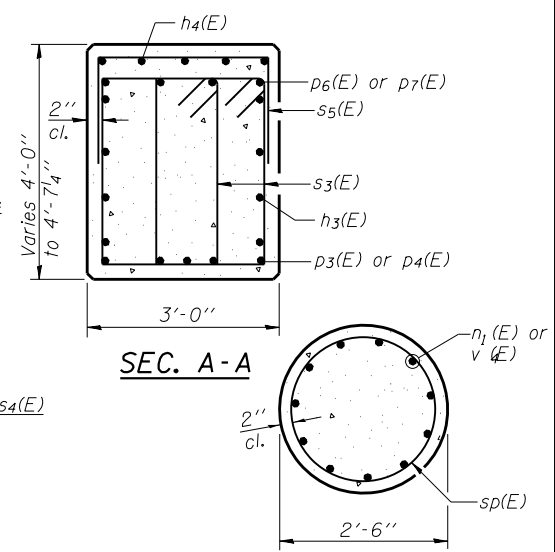
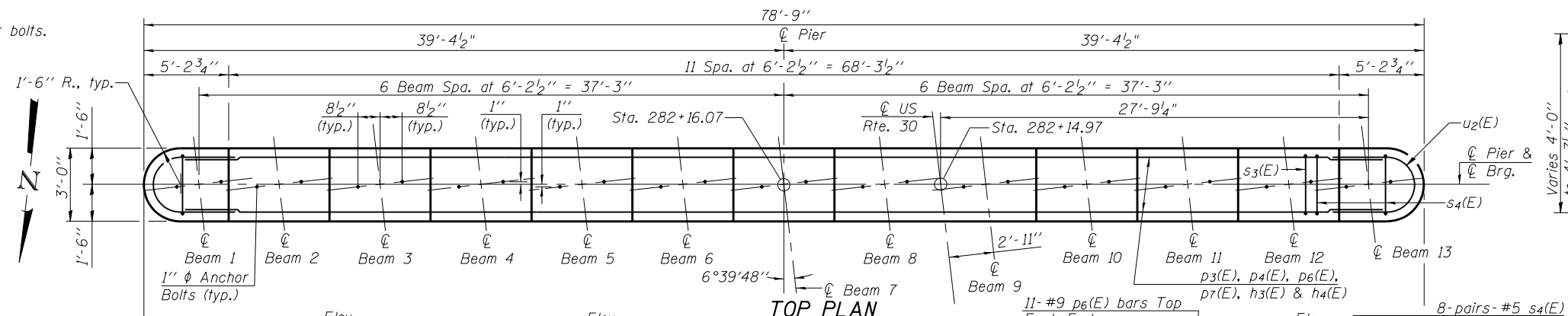


Notes:  
 Space reinforcement in cap to miss anchor bolts.  
 Pour steps monolithically with cap.  
 For details of piles, see sheet 24 of 35.

**PILE DATA**

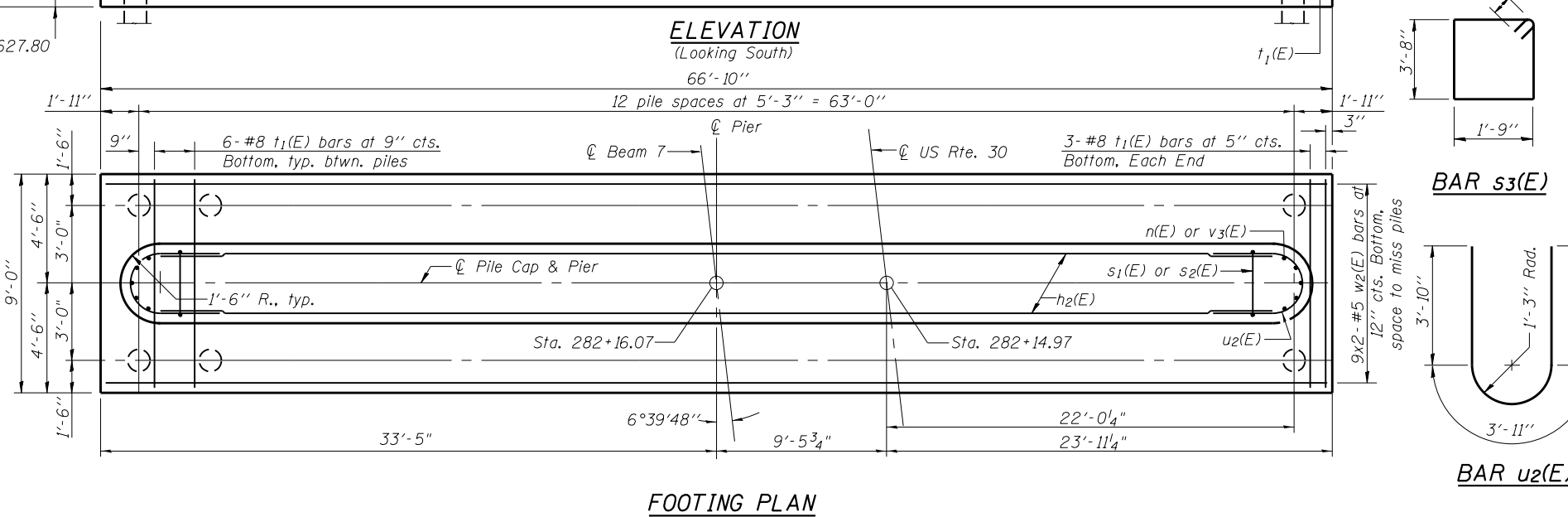
Type: Metal Shell-14 in. dia. x .25 in. walls  
 Nominal Required Bearing: 336 kips  
 Factored Resistance Available: 185 kips  
 Est. Length: 46 feet  
 No. Production Piles: 25  
 No. Test Piles: 1



**PIER BILL OF MATERIAL**

Bar	No.	Size	Length	Shape
h2(E)	36	#5	32'-11"	—
h3(E)	16	#5	39'-6"	—
h4(E)	5	#5	30'-9"	—
h5(E)	14	#8	34'-8"	—
n(E)	10	#6	6'-11"	U
n1(E)	72	#7	8'-0"	U
p3(E)	10	#8	28'-5"	—
p4(E)	5	#8	21'-6"	—
p5(E)	10	#8	7'-2"	—
p6(E)	22	#9	25'-2"	U
p7(E)	4	#9	50'-0"	—
s1(E)	63	#6	15'-2"	U
s2(E)	63	#6	20'-4"	U
s3(E)	154	#5	11'-9"	□
s4(E)	64	#5	7'-9"	U
s5(E)	31	#5	6'-8"	U
sp(E)	6	#4	13'-6"	W
t1(E)	78	#8	8'-9"	—
u2(E)	28	#6	11'-7"	U
v3(E)	10	#6	8'-9"	—
v4(E)	72	#7	15'-0"	—
w2(E)	18	#5	34'-11"	—
Structure Excavation			Cu. Yd.	154
Concrete Structures			Cu. Yd.	172.9
Reinforcement Bars, Epoxy Coated			Pound	20,460
Furnishing Metal Shell Piles, 14" x 0.25"			Foot	1150
Driving Piles			Foot	1150
Test Pile, Metal Shells			Each	1

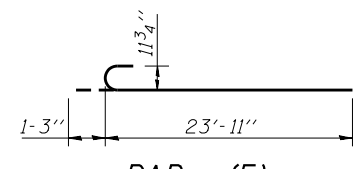
\* Length is height of spiral.



**A & B DIMENSIONS**

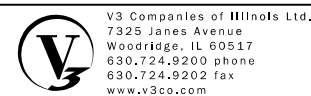
Bar	A	B
s1(E)	2'-8"	6'-3"
s2(E)	2'-8"	8'-10"
s4(E)	1'-9"	3'-0"
s5(E)	2'-8"	2'-0"

**BARS s1(E), s2(E), s4(E) & s5(E)**



**MIN. BAR LAP**

- #4 = 2'-7"
- #5 = 3'-3"
- #6 = 3'-10"
- #7 = 5'-2"
- #8 = 6'-9"
- #9 = 9'-8"



USER NAME =	DESIGNED - WJV	REVISIONS
PLOT SCALE =	CHECKED - CJB	REVISIONS
PLOT DATE =	DRAWN - WJV	REVISIONS
	CHECKED - CJB	REVISIONS

**STATE OF ILLINOIS DEPARTMENT OF TRANSPORTATION**

**PIER STRUCTURE NO. 016-1350 SHEET NO. 23 OF 35 SHEETS**

F.A.P. RTE.	SECTION	COUNTY	TOTAL SHEETS	SHEET NO.
353	11-Y-A	COOK	354	208
CONTRACT NO. 60R19				
ILLINOIS FED. AID PROJECT				